

Co-creating a Regional Vision for People + Nature

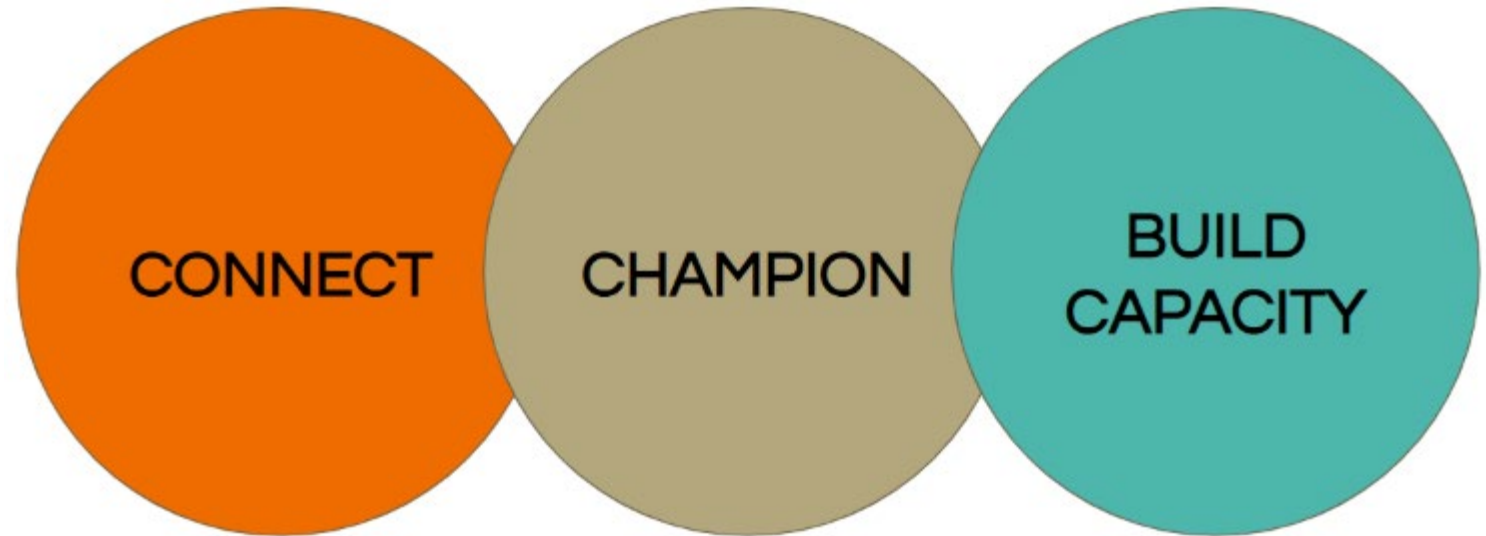


Dana Coelho, Alliance Director

dana@metrodna.org | 303-883-9405



Align nature-based efforts to ensure more equitable access to nature and to promote healthy people, communities, and natural places.



Connecting Communities. Championing Nature.

www.metrodna.org



Colorado Public Health
Parks and Recreation
Collaborative



Climate Courage
Heart of the West Counseling
Jo Burns Consulting



CONVERGENCE:

Water/Climate +

Habitat Loss +

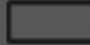
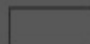


Environmental Justice



Study Area

Front Range
Denver, CO

**MDNA
Connectivity
Analysis**

-  MDNA Counties
-  Watersheds (HU12)
-  South Platte River
-  Major Tributaries



0 4 8 12
Miles

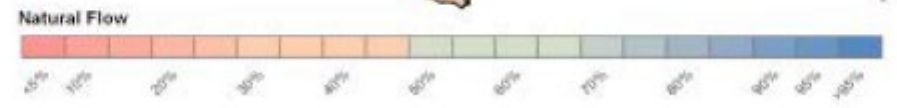
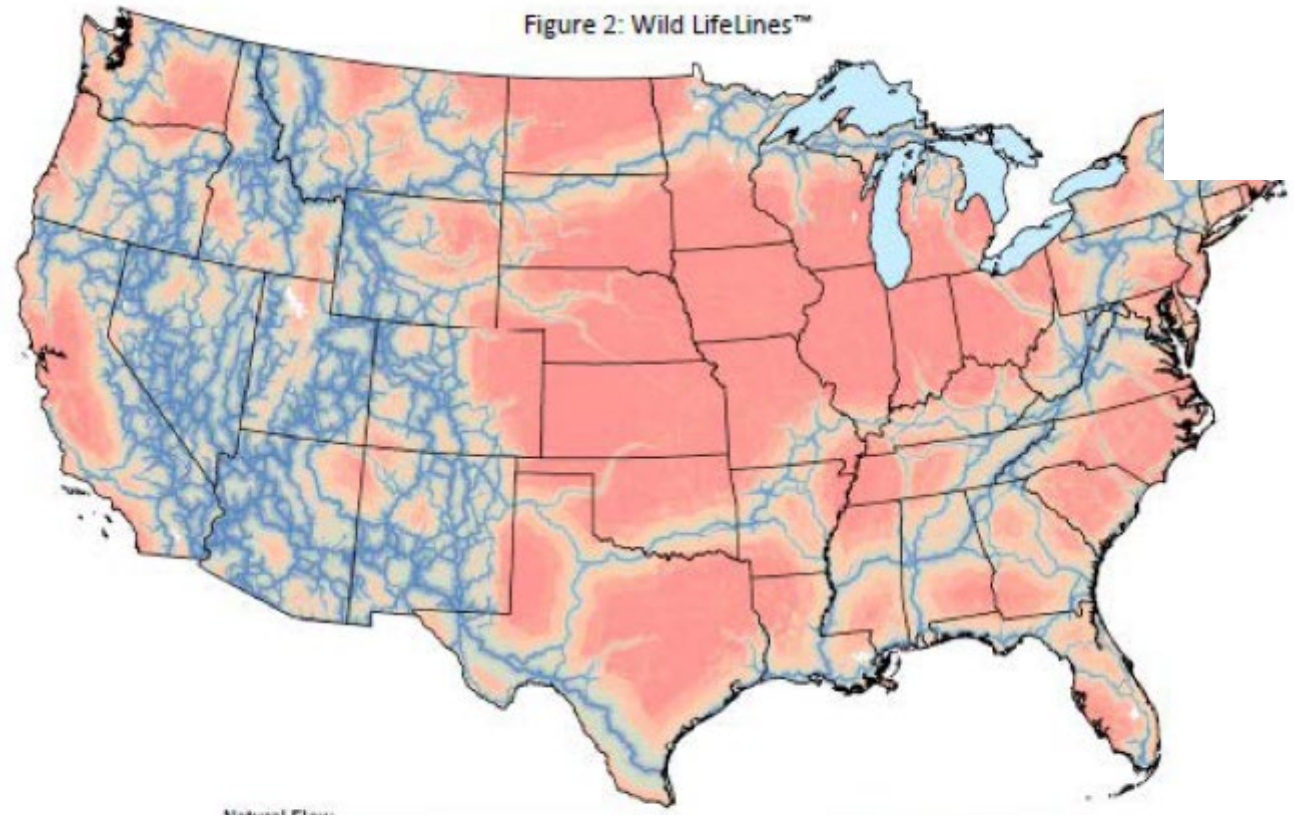


Regional Conservation Assessment

leverage existing data and planning documents to identify high-quality, connected, and climate-resilient habitat in the metro area

South Platte River

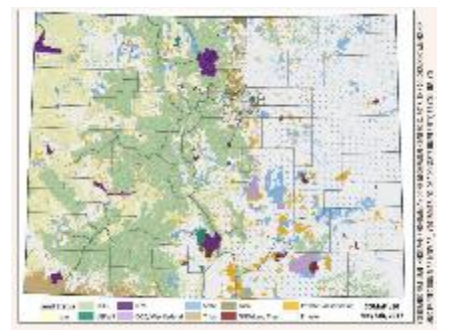
Figure 2: Wild LifeLines™



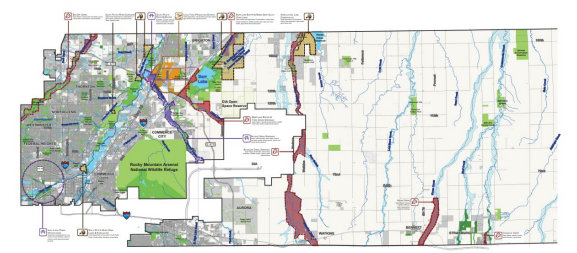
Geographic Information Systems
 Data & Software
 www.sparcc.com
 10000th Ave. North, Suite 100
 Denver, CO 80231



We all do better when **everyone** thrives.

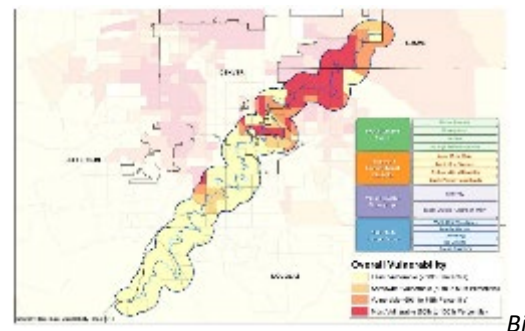


CPW



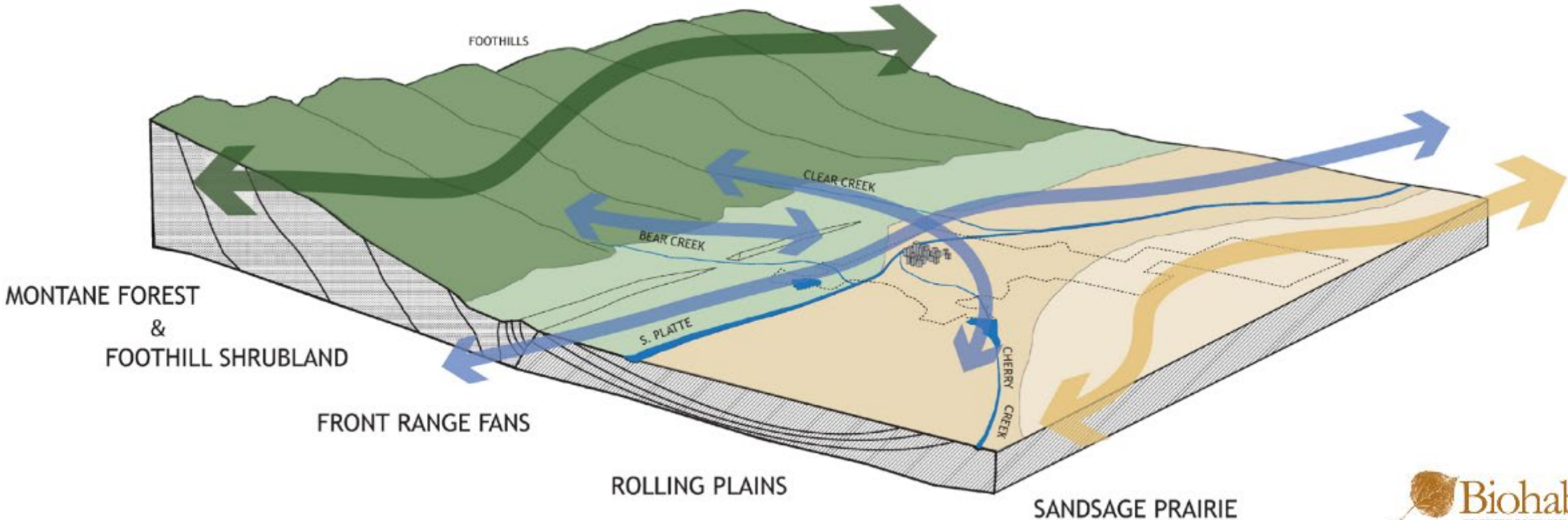
ADAMS COUNTY, COLORADO
 CITY OF ADAMS
 PARKS AND OPEN SPACE MASTER PLAN
 November 10, 2012

Adams County



Biohabitats

Regional planning framework & ecoregions



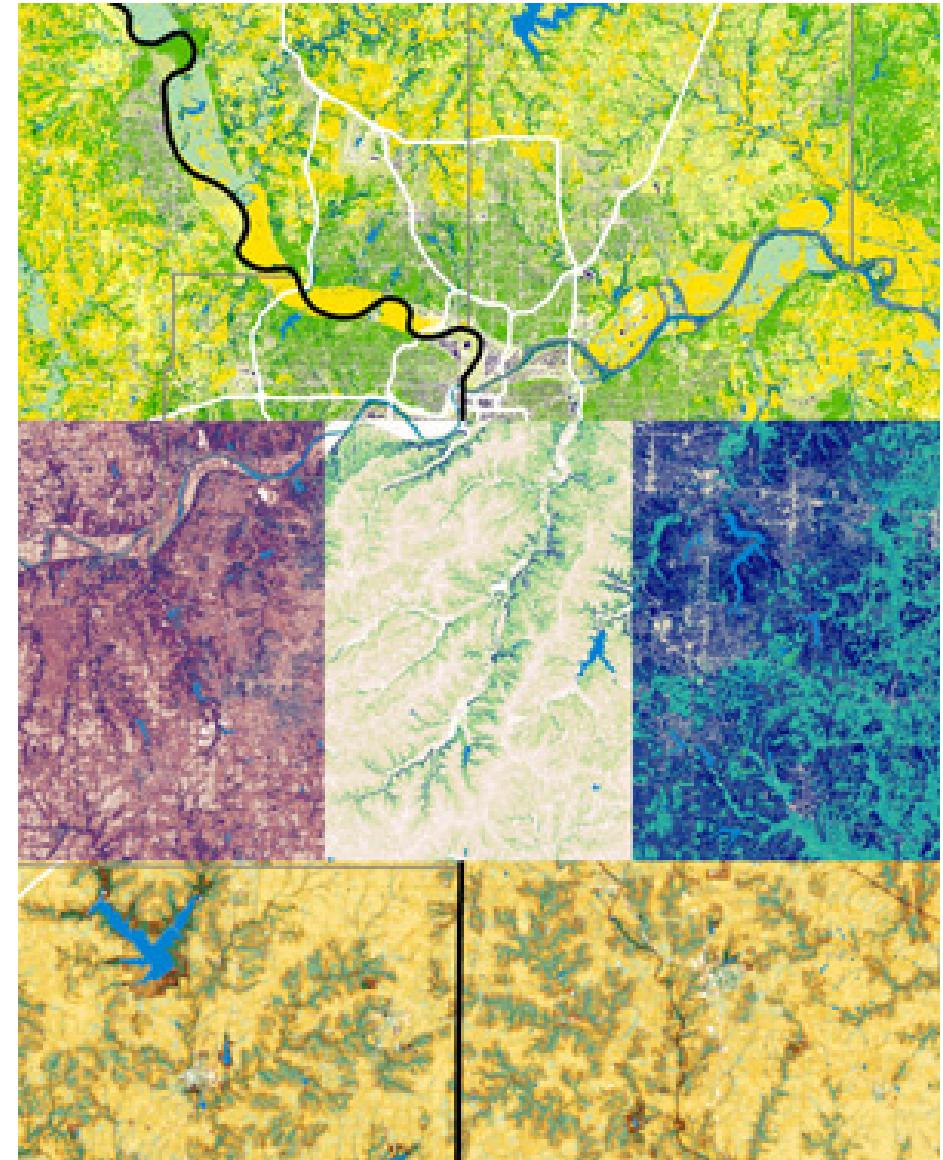
Desired outcomes

- Influencing how decision makers prioritize lands and waters to protect, connect, restore, and enhance;
- Ensuring all people can have equitable access to nature and build community well-being;
- Supporting wildlife in the face of a changing climate;
- Creating a base of ecological knowledge to inform future policy, planning, and funding actions;
- Deepening collaboration between key organizations in the region; and
- Improving planning and decision-making through the development of shared goals, priorities, and metrics.



Project deliverables

- **Regional Conservation Strategy:** portfolio of targets, metrics, and priority lands and waters to guide collaborative actions.
- **Biodiversity Atlas for decision-makers:** publicly-available geo-database used to prioritize protection, restoration, and enhancement activities.
- **A diverse, engaged, and invested** Leadership Council, Technical Advisory Team, and partner network.



Project team + collaborators

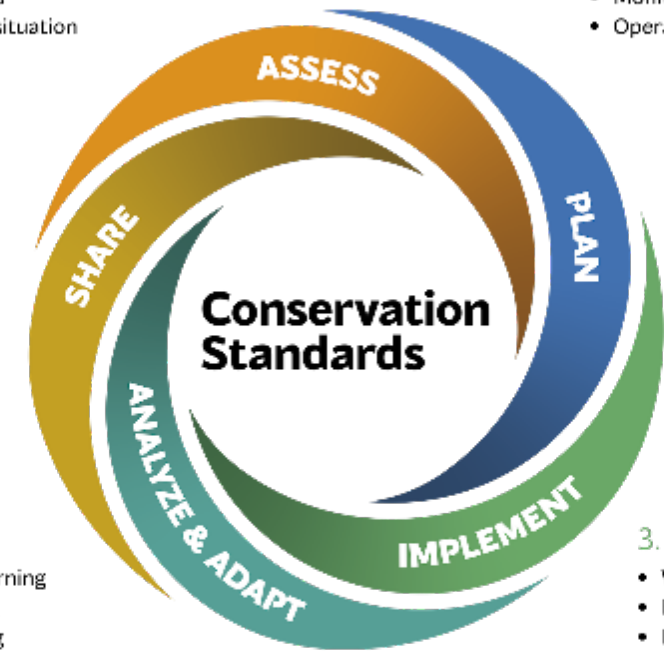
- **Core Team:** TNC, Biohabitats, and Metro DNA; meet weekly to coordinate all aspects of the project.
- **Leadership Council:** decision makers from land and water management agencies committed to project implementation, meets 2-3 times per year.
- **Technical Advisory Team:** technical experts from a range of institutions who will directly shape the analysis and project outcomes, meets once every other month.

1. ASSESS

- Purpose & team
- Scope, vision, & targets
- Critical threats
- Conservation situation

2. PLAN

- Goals, strategies, assumptions, & objectives
- Monitoring plan
- Operational plan



5. SHARE

- Document learning
- Share learning
- Foster learning

3. IMPLEMENT

- Work plan & timetable
- Budget
- Implement plan

4. ANALYZE & ADAPT

- Prepare data
- Analyze results
- Adapt plans

PARTNER BENEFITS

network connections, mission alignment and context within a shared vision, increased capacity, expanded reach, and leveraged resources

COMMON OUTCOMES

more equitable access to nature, healthier people and places



Learn more + engage!

www.metrodna.org/projects/regional-vision

Become a partner!

www.metrodna.org/join

Dana Coelho, Alliance Director

dana@metrodna.org | 303-883-9405