

THE
TRUST
FOR
PUBLIC
LAND

Land
for
people.

Our mission

LAND FOR PEOPLE

The Trust for Public Land creates parks and protects land for people, ensuring healthy, livable communities for generations to come.





Our impact Since 1972

FROM NEIGHBORHOOD PARKS
TO NATIONAL PARKS

5 thousand+ places created

3 million+ acres protected

70 billion+ public funds generated

8 million+ people within a 10-min walk

Why We Need Parks

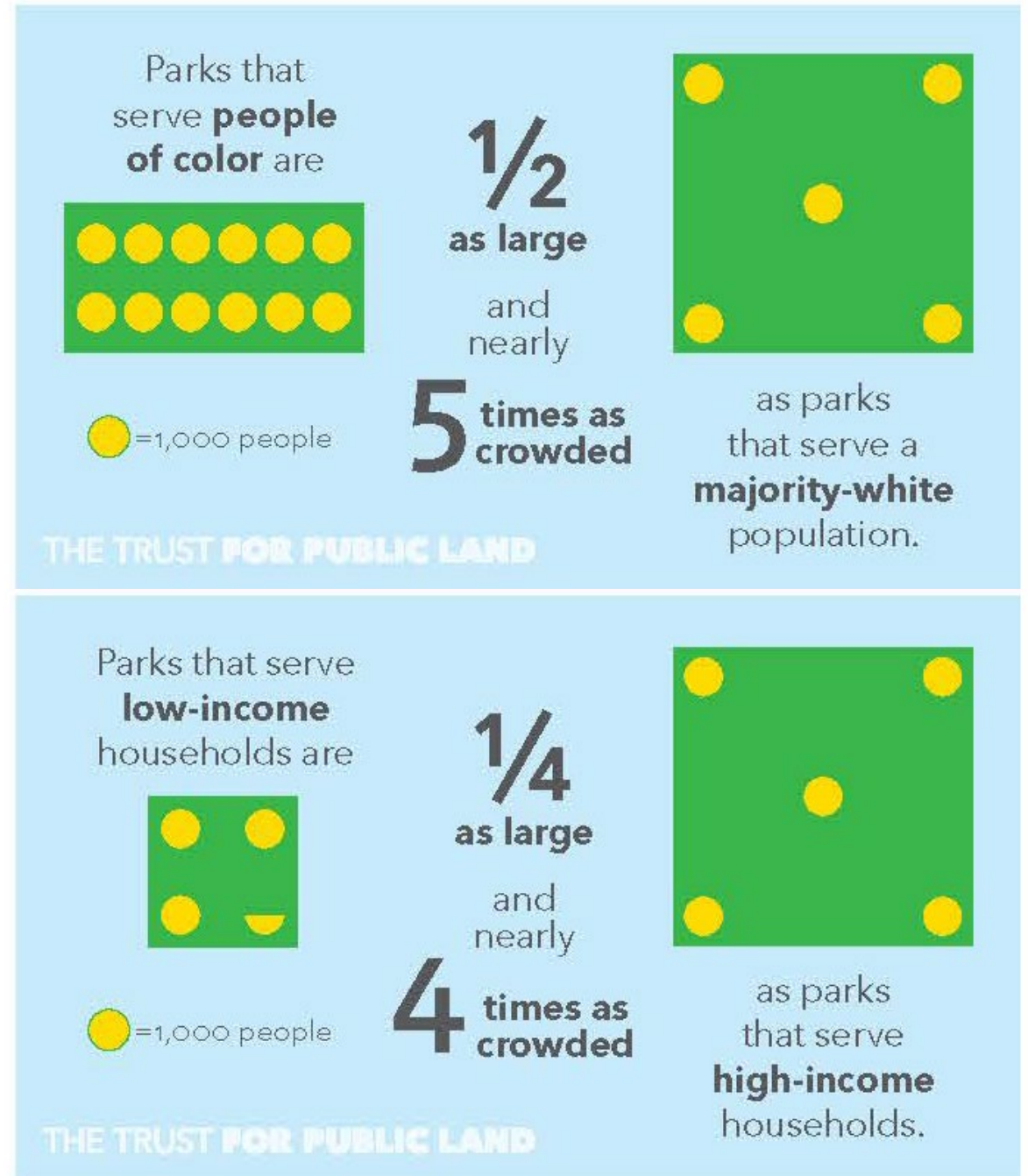
100 million people, or more than 1 in 3 Americans, do not have a park within a 10-minute walk of home.



Inequitable Distribution of Parks

“Not everyone has easy access to a park, and if they do, that park might not be very large or very green.”

- The Heat is On, TPL Report



In Detroit, where 78% of residents are Black, the city devotes 6% of its land to park space, compared to the national median of 15%.

In Memphis, Tennessee, just 5% of land area is comprised of parks, while in Baton Rouge, Louisiana, only 3% of the city is dedicated to parkland.

PARKLAND AS PERCENT OF CITY AREA IN MAJORITY BLACK CITIES ON THE PARKSCORE® INDEX

THE TRUST FOR PUBLIC LAND

National median	15%
Baton Rouge	3%
Memphis	5%
Detroit	6%
Atlanta	6%
Baltimore	10%
New Orleans	26%

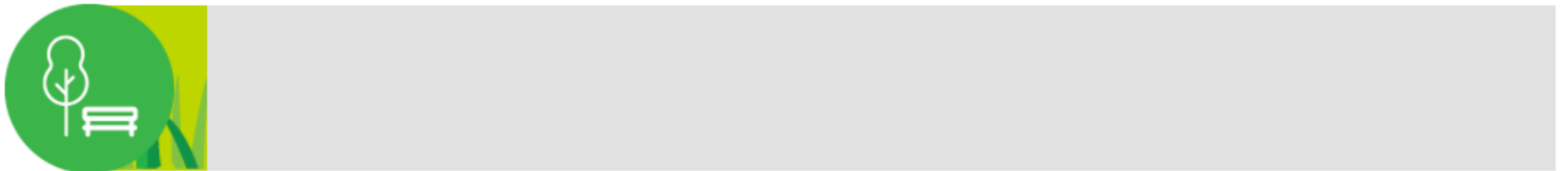
Denver's 2020 ParkScore Ranking: #22

91% of residents live within a 10 minute walk of a park.



National average 55%

8% of Denver's city land is used for parks and recreation.

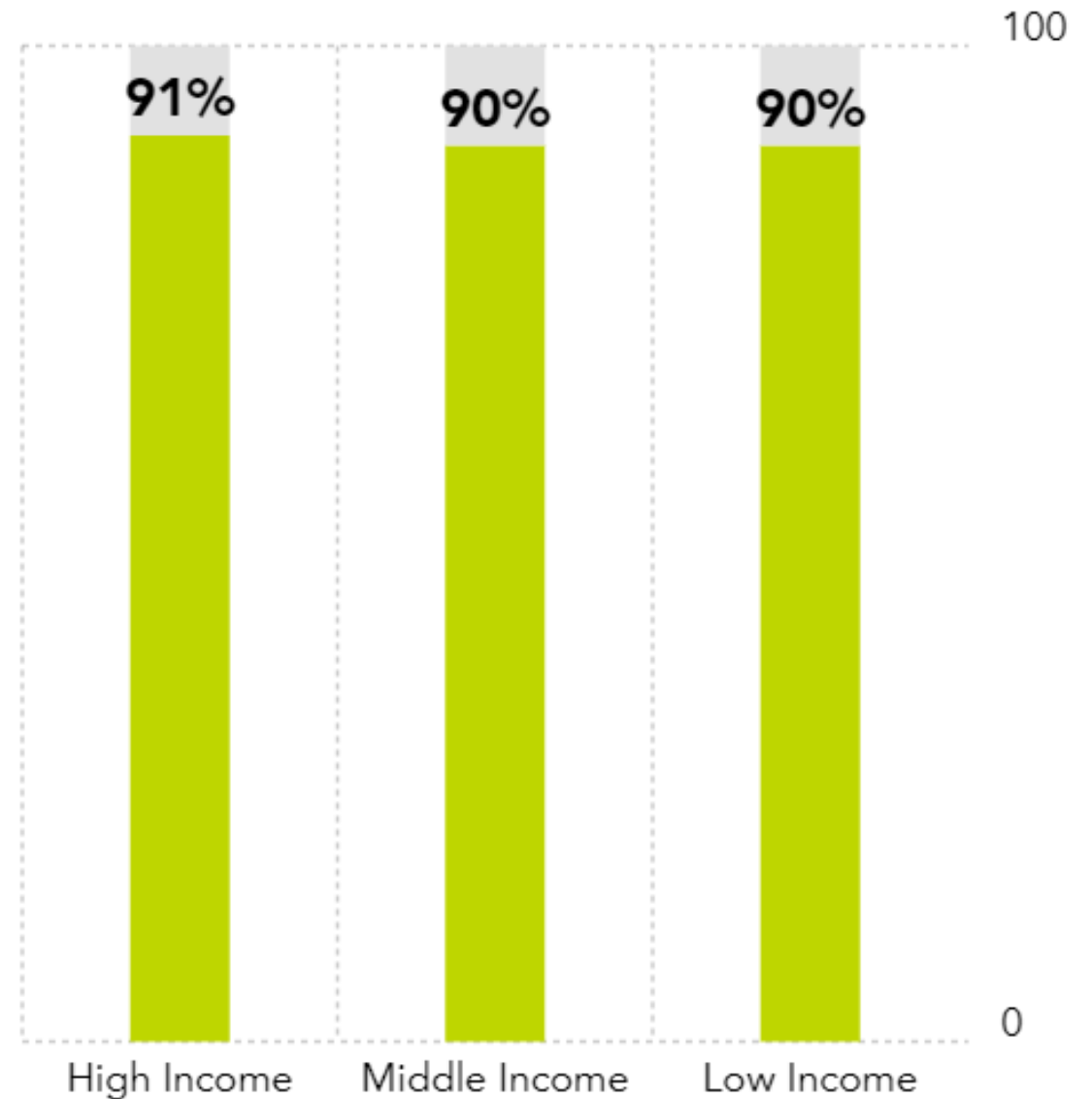


National median 15%

PERCENT OF RESIDENTS WITHIN A 10-MINUTE WALK OF A PARK BY AGE



PERCENT OF RESIDENTS WITHIN A 10-MINUTE WALK OF A PARK BY INCOME ⓘ

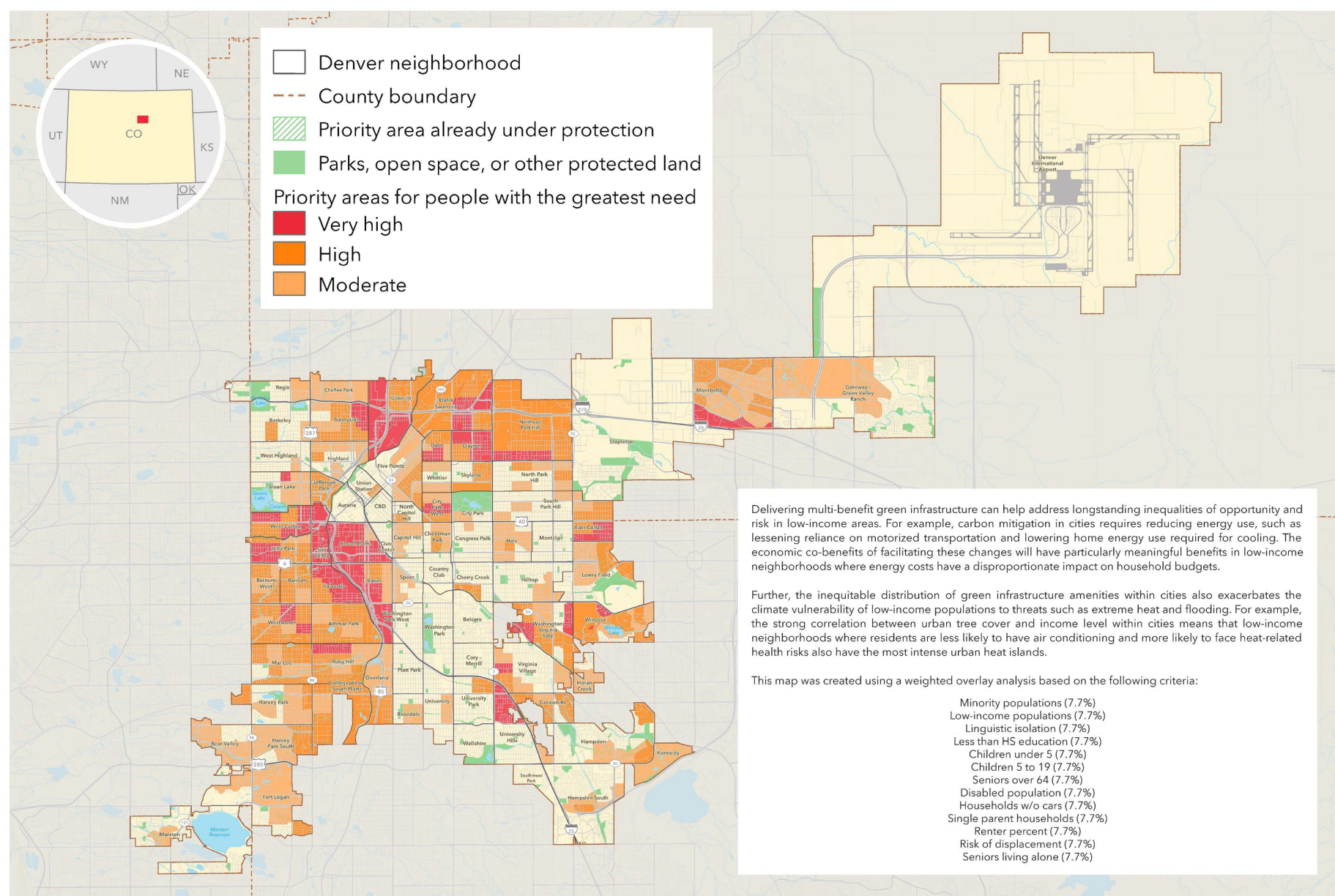


PERCENT OF RESIDENTS WITHIN A 10-MINUTE WALK OF A PARK BY RACE/ETHNICITY ⓘ



Climate Smart Cities Program

The Trust for Public Land's nationwide effort to help cities deploy multiple-benefit green infrastructure to lower carbon emissions, build resilience, and advance climate justice.



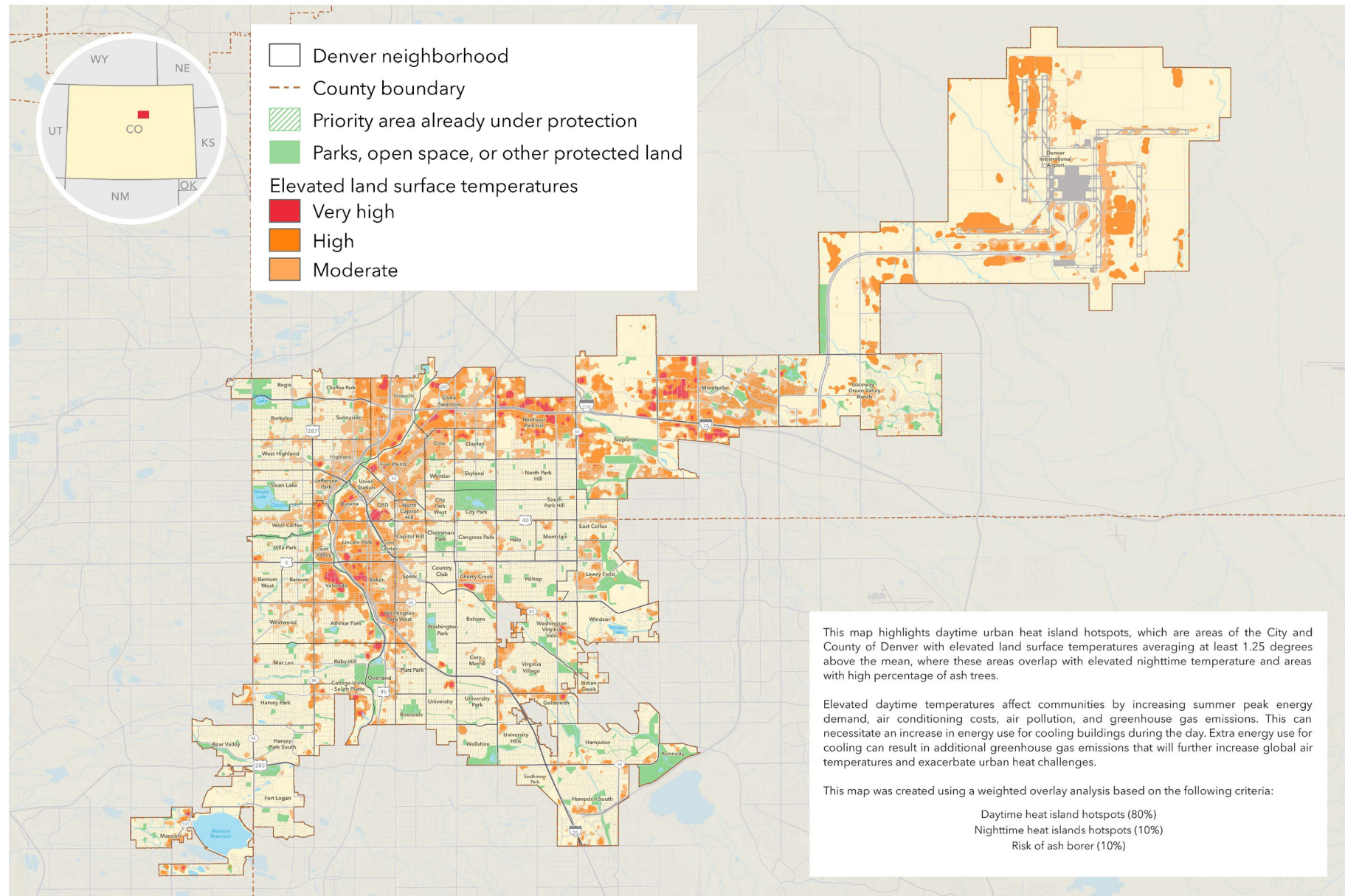
Focusing on people with the greatest need

CLIMATE-SMART CITIES™ DENVER: CLIMATE EQUITY PRIORITIES

March 9, 2018. Special thanks to the City and County of Denver and all of our partners on the Technical Advisory Team. Copyright © The Trust for Public Land. The Trust for Public Land and The Trust for Public Land logo are federally registered marks of The Trust for Public Land. Information on this map is DRAFT and provided for purposes of discussion and visualization only web.tplgis.org/denver_csc/. These draft map results were created as a demonstration of final products that will be produced for the CLIMATE - SMART CITIES DENVER™ and are not meant for planning.



Experts estimated that extreme heat contributed to the deaths of an average of 5,600 people each year between 1997 and 2006 nationally.

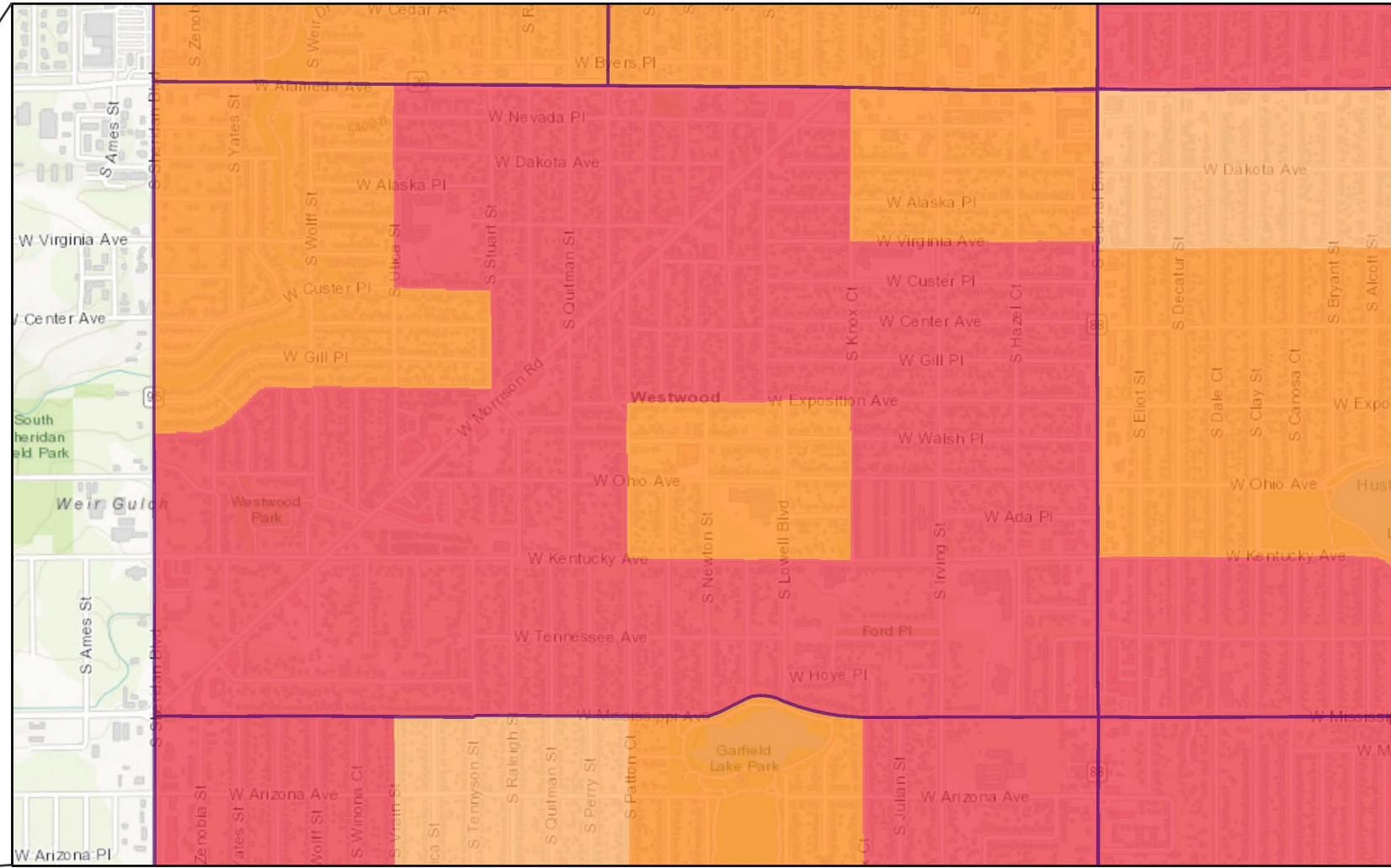
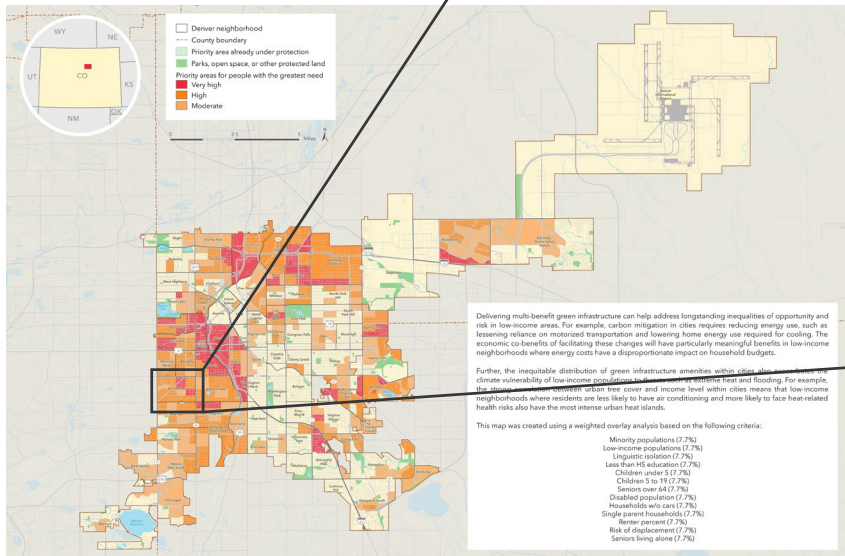


Urban heat islands

CLIMATE-SMART CITIES™ DENVER: COOL PRIORITIES

March 9, 2018. Special thanks to the City and County of Denver and all of our partners on the Technical Advisory Team. Copyright © The Trust for Public Land. The Trust for Public Land and The Trust for Public Land logo are federally registered marks of The Trust for Public Land. Information on this map is and DRAFT and provided for purposes of discussion and visualization only. web.tplgis.org/denver_escr These draft map results were created as a demonstration of final products that will be produced for the CLIMATE-SMART CITIES™ and are not meant for planning.

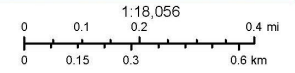
Neighborhood Scale Change

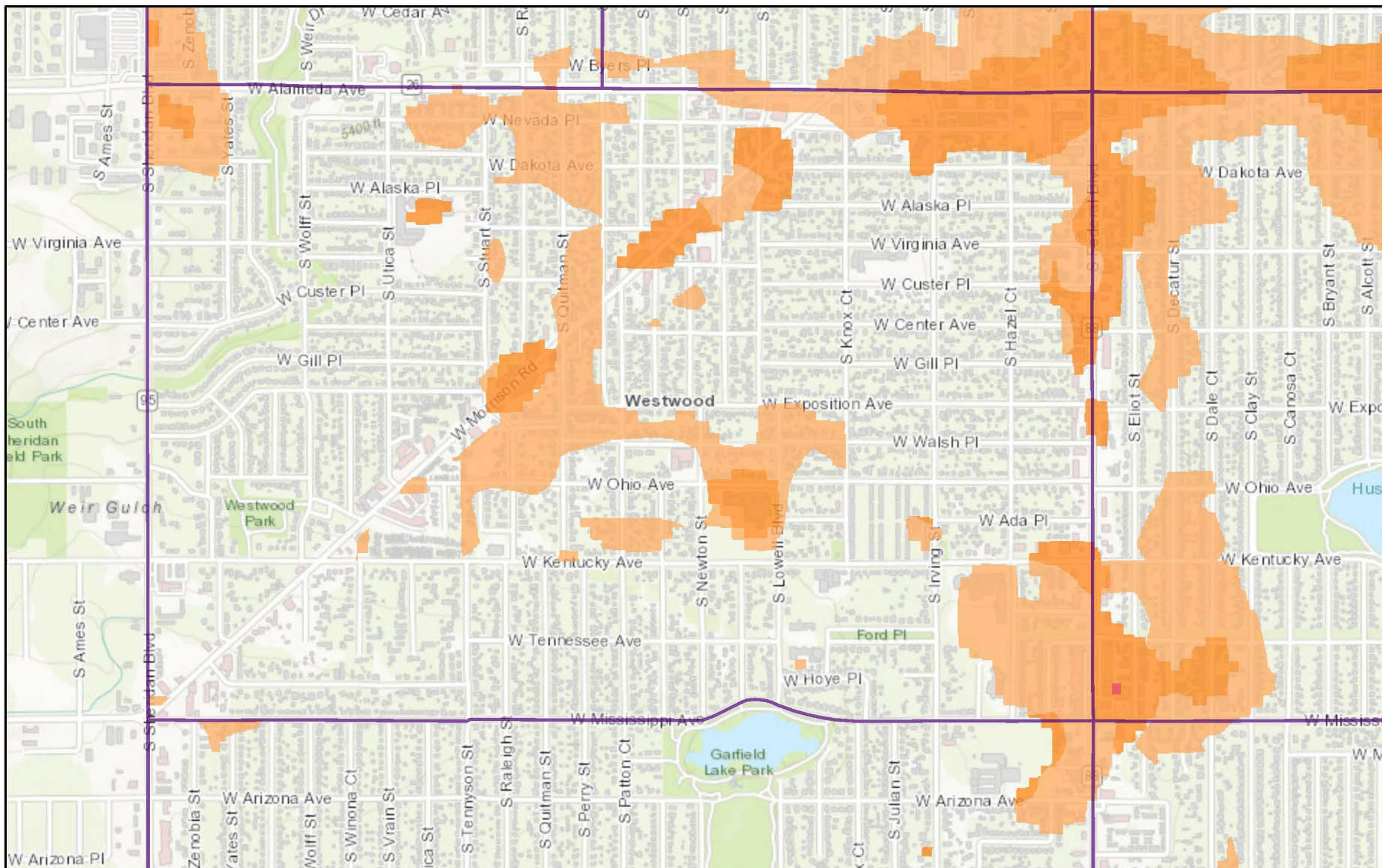


November 12, 2019

- Neighborhoods
- High
- Moderate
- Very high

Westwood Neighborhood



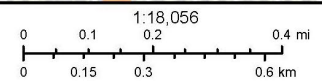


November 12, 2019

Neighborhoods High

Cool Priorities Moderate

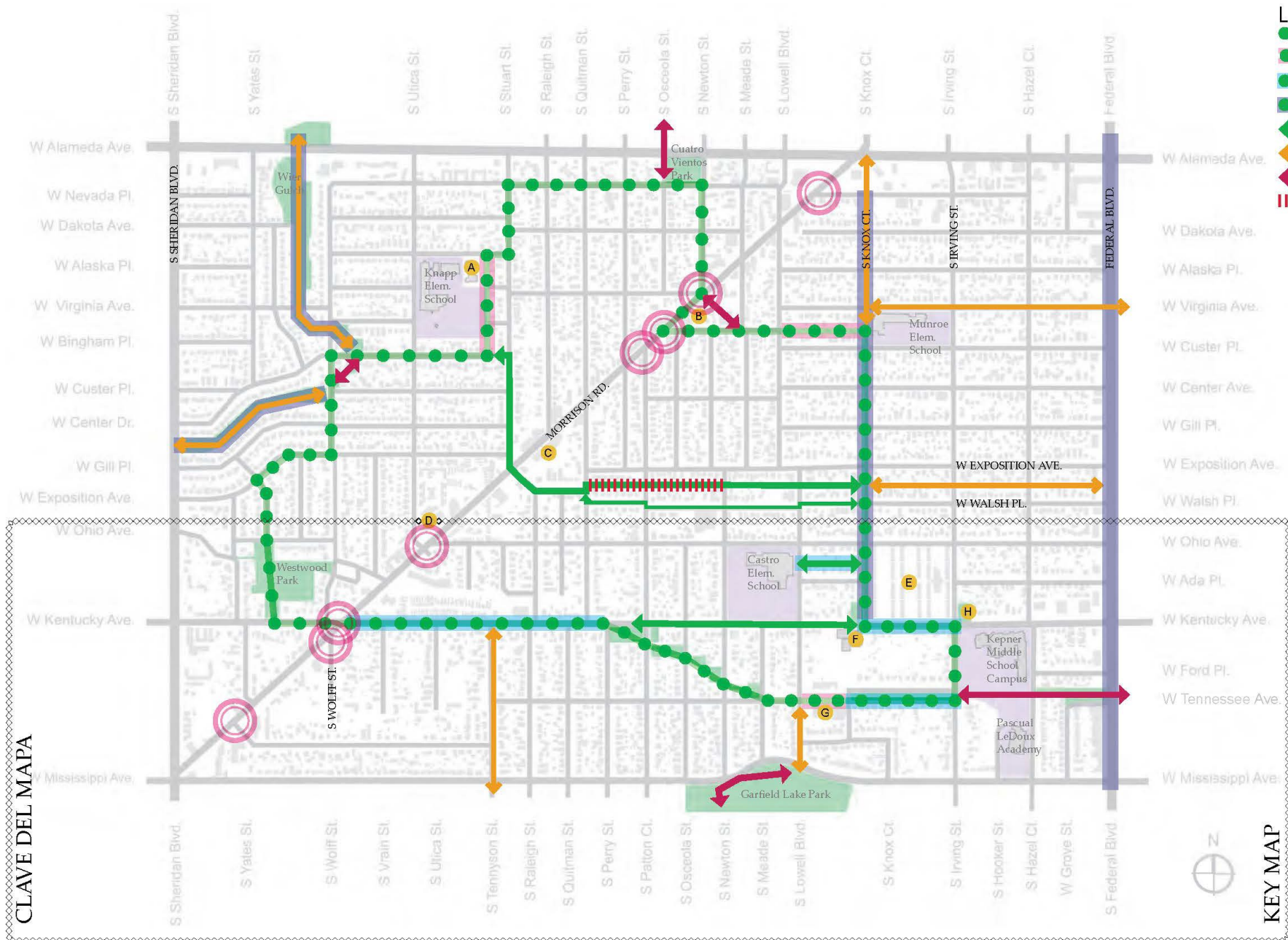
Very high



1:18,056

Cool Priorities





- LEYENDA**
- Ruta primaria propuesta
 - Área de prioridad del proyecto liderado por la comunidad
 - Área de proyecto de implementación prioritaria
 - Proyectos próximos por otros
 - Conexiones adicionales propuestas
 - Conexiones adicionales de los vecindarios
 - Conexiones experimentales
 - Derecho de vía no asignado
 - Mejoras de intersecciones propuestas por otros (Morrison Road Implementation Plan)
 - Destinos del vecindario
 - A Denver Health: Westwood Family Health Center
 - B Westwood Food Cooperative & La Casita
 - C Paloma Villas
 - D Denver Indian Center
 - E DHA Westwood Homes
 - F Boys & Girls Club
 - G Biblioteca de Westwood y Southwest Improvement Council
 - H El próximo parque pequeño

- LEGEND**
- Proposed Primary Route
 - Priority Community-led Project Area
 - Priority Implementation Project Area
 - Proximate Projects by Others
 - Proposed Additional Connections
 - Additional Neighborhood Connections
 - Experiential Connections
 - Non-Designated Right-of-Way
 - Proposed Intersections Improvements by Others (Morrison Road Implementation Plan)
 - Neighborhood Destinations
 - A Denver Health: Westwood Family Health Center
 - B Westwood Food Cooperative & La Casita
 - C Paloma Villas
 - D Denver Indian Center
 - E DHA Westwood Homes
 - F Boys & Girls Club
 - G Westwood Library & Southwest Improvement Council
 - H Future Pocket Park

CLAVE DEL MAPA

KEY MAP

Westwood Via Verde: Neighborhood Greenway



Resources

The Trust for Public Land Reports & Tools

The Heat is On <https://www.tpl.org/the-heat-is-on>

Parks and the Pandemic <https://www.tpl.org/parks-and-the-pandemic>

ParkScore <https://www.tpl.org/parkscore>

Climate Smart Cities (https://web.tplgis.org/denver_csc/

10 Minute Walk Campaign <https://10minutewalk.org/>

Parks and Recreation Plans & Related Articles

Denver Wants to Fix a Legacy of Environmental Racism, The New York Times

<https://www.nytimes.com/2020/09/30/climate/city-parks.html?searchResultPosition=1>

Denver Equity Index <https://www.arcgis.com/apps/MapJournal/index.html?appid=2f30c73e83204e96824a14680a62a18e>

Denver's Game Plan

https://www.denvergov.org/content/dam/denvergov/Portals/Denveright/documents/Game%20Plan/GamePlan_FinalReport.pdf

Denver Parks & Recreation 2A Five Year Plan 2020-2024

https://www.denvergov.org/content/dam/denvergov/Portals/747/documents/planning/investment/2A_5-Year-Plan_DPR.pdf

Minneapolis Neighborhood Parks Plan

https://www.minneapolisparcs.org/about_us/budget_financial/20-year_neighborhood_park_plan/

Resources

Equitable development and anti-displacement strategies:

University of Illinois – Chicago: Gentrification and Neighborhood Change
https://docs.wixstatic.com/ugd/992726_7c881aaf56724952a4d8fd30039f35a0.pdf

Grounded Solutions: Housing Policy Toolkit <https://groundedsolutions.org/housing-policy-toolkit>

Policy Link: All In Cities Anti-Displacement Toolkit <https://allincities.org/toolkit>

National CAPACD – Anti Displacement Strategies
https://www.nationalcapacd.org/wp-content/uploads/2017/08/anti_displacement_strategies_report.pdf

Strategies specific to parks and green infrastructure investments:

UCLA: Park Related Anti-Displacement Strategies <https://www.ioes.ucla.edu/project/prads/>

University of Minnesota CREATE initiative: Sharing in the Benefits of a Greening City
https://create.umn.edu/wp-content/uploads/2020/02/sharing_in_the_benefits_of_a_greening_city_-_final_web.pdf

SPARCC: Principles for parks and equitable development
http://www.sparcchub.org/2019/08/27/principles-for-parks-and-equitable-development/?mc_cid=2f5f192027&mc_eid=d6315d6ba3