

Perspectives on Smart Siting and Community-Centered Schools

**NATIONAL
TRUST
FOR
HISTORIC
PRESERVATION®**

Rocky Mountain Land Use Institute Conference
March 5, 2010



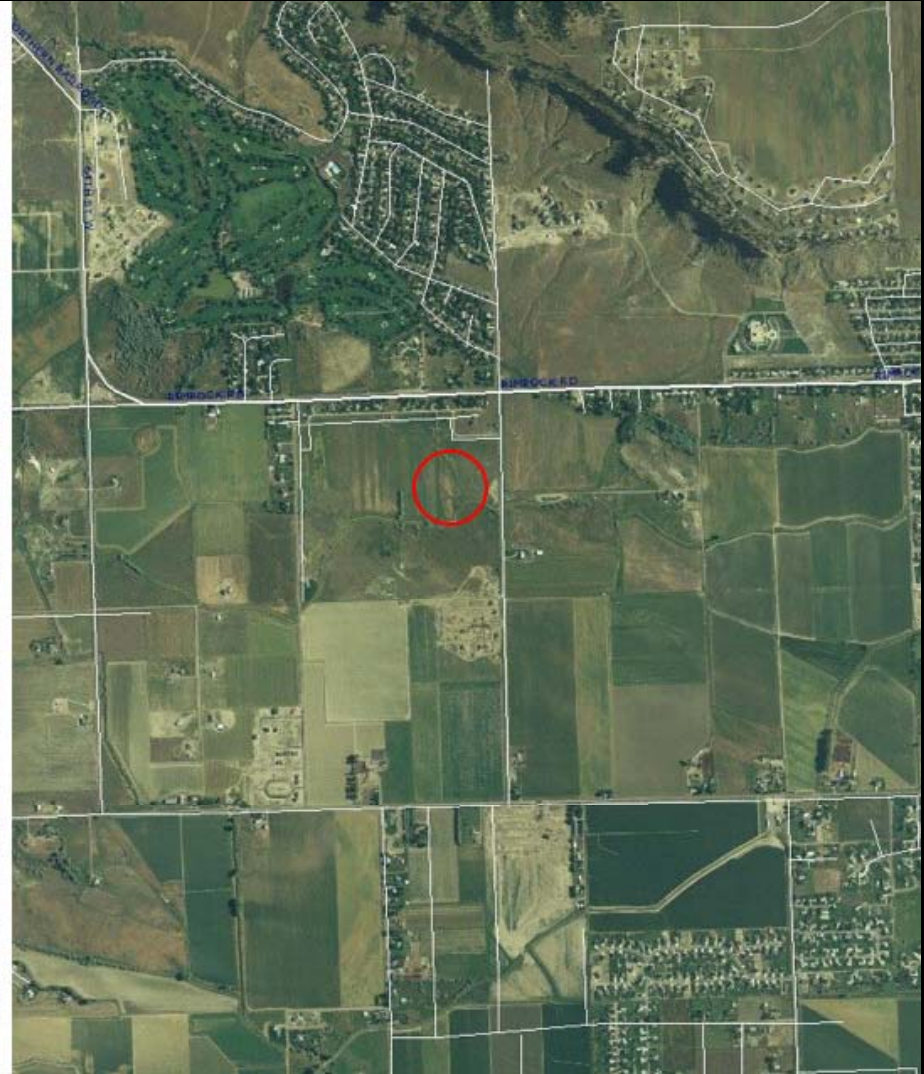
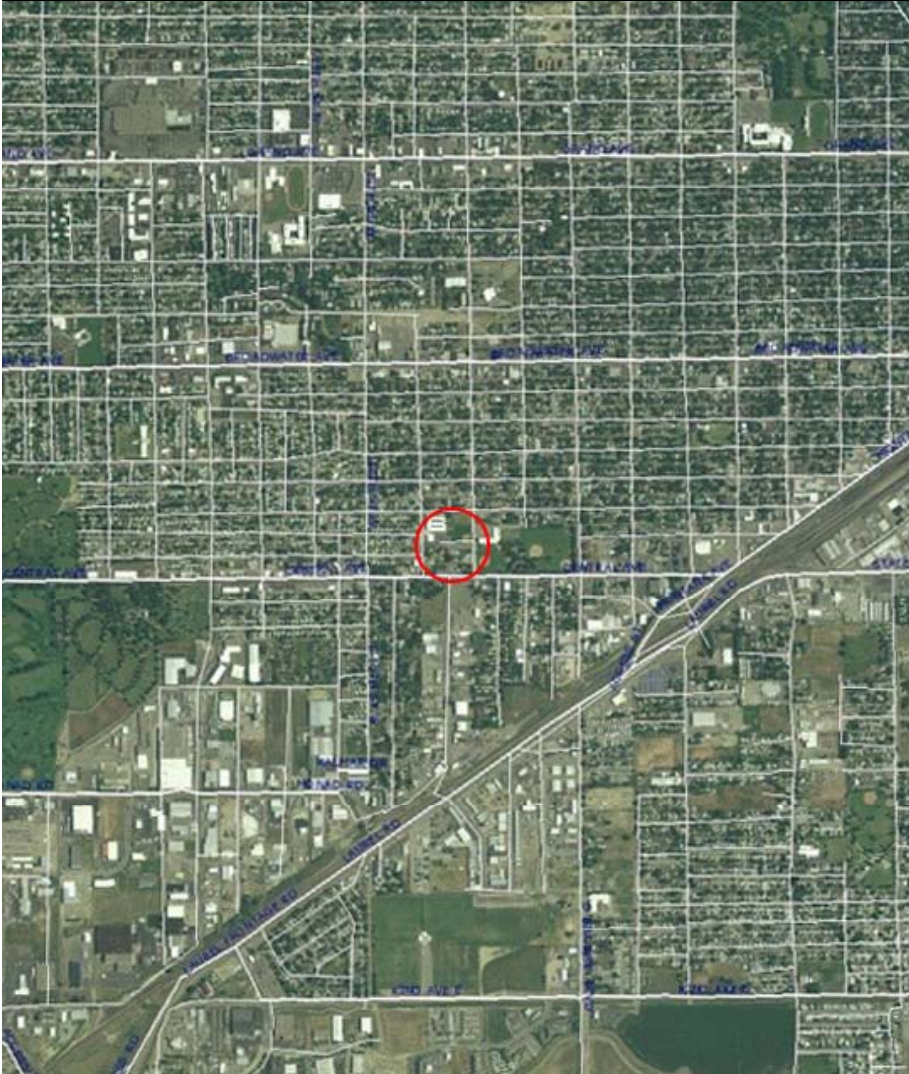
Commissioner Michael Knight in front of Dubuque's St. Raphael School

www.PreservationNation.org



**NATIONAL
TRUST
FOR
HISTORIC
PRESERVATION®**

Proximity Matters



Courtesy of Google Earth



**NATIONAL
TRUST
FOR
HISTORIC
PRESERVATION®**

Benefits of Community-Centered Schools

- *Anchors the neighborhood (property values, public / private investment)*
- *Multiple transportation modes*
- *Fewer vehicle mile traveled improves air quality*
- *Close ties to community*
- *Smaller footprint*
- *Save on construction and operating costs (joint or shared use of facilities)*

Increase Physical Activity

... “factors such as school location have played a significant role in the decreased rates of walking to school, and changes in policy may help to increase the number of children who are able to walk to school.”

American Academy of Pediatricians
Committee on Environmental Health
2009

**NATIONAL
TRUST
FOR
HISTORIC
PRESERVATION**

Helping Johnny Walk to School

Policy Recommendations for Removing Barriers
to Community-Centered Schools

BY RENEE KUHLMAN



Eliminate Minimum Acreage Standards

**NATIONAL
TRUST
FOR
HISTORIC
PRESERVATION®**

Encourage Meaningful Planning Coordination

New Hampshire

Senate Bill 59

State Climate Action
Plan



Keene, New Hampshire

**NATIONAL
TRUST
FOR
HISTORIC
PRESERVATION®**



**NATIONAL
TRUST
FOR
HISTORIC
PRESERVATION®**



Funding for School Construction



Arvada, Wyoming

**NATIONAL
TRUST
FOR
HISTORIC
PRESERVATION®**

Full-Cost Accounting of Siting Decisions



Photo: Dan Burden



**NATIONAL
TRUST
FOR
HISTORIC
PRESERVATION®**



www.smartgrowthschools.org

Further More Information

www.preservationnation.org/issues/
www.bestfacilities.org/best-home/
www.epa.gov/schools/siting.html
www.ncef.org/rl/site_selection.cfm

Renee Kuhlman
Center for State and Local Policy
National Trust for

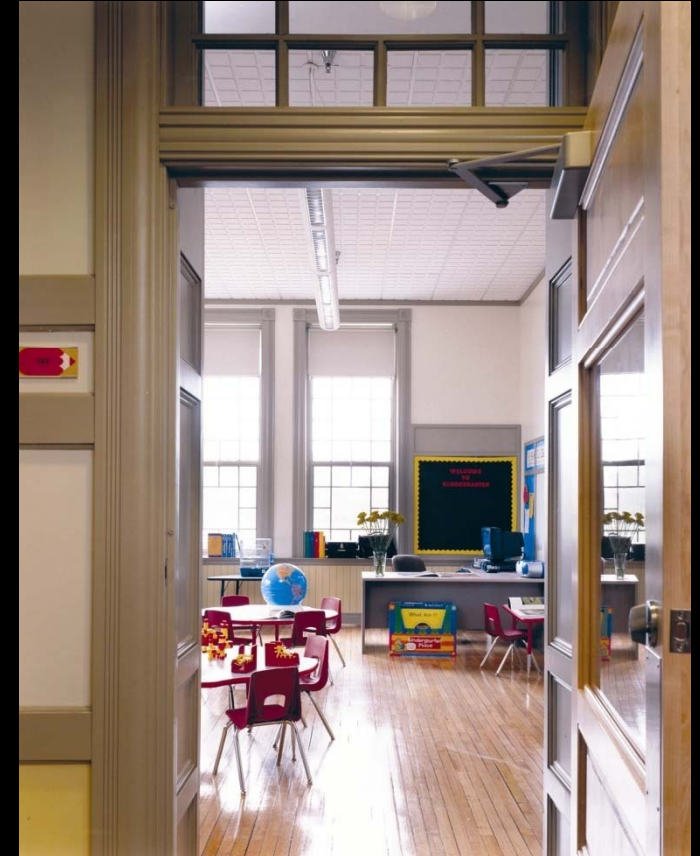
Historic Preservation

Phone: 202-588-6234

renee_kuhlman@nthp.org

Regional Offices and
Preservation Partners

www.preservationnation.org



**NATIONAL
TRUST
FOR
HISTORIC
PRESERVATION®**