

Transmission Issues

Rocky Mountain Land Use Institute

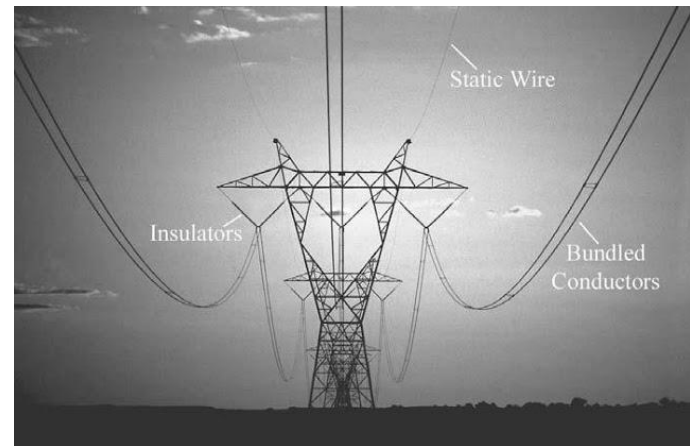
March 13, 2014



Let's turn the answers on.

Agenda

- Gateway Program Overview
- Layers of Permitting
- Permitting Impacts
- Conservation Easements
- Property Owner Expectations



Energy Gateway Status

West of Hemingway

Boardman-Hemingway:

- Permitting underway with joint permitting agreement
- Draft EIS target: Q2 2014

Gateway West

- Permitting underway
- ROD D/E (partial) - Q4 2013
- ROD E (remainder) - Q4 2014

Populus - Terminal

- In-service November 2010

Mona-Oquirrh

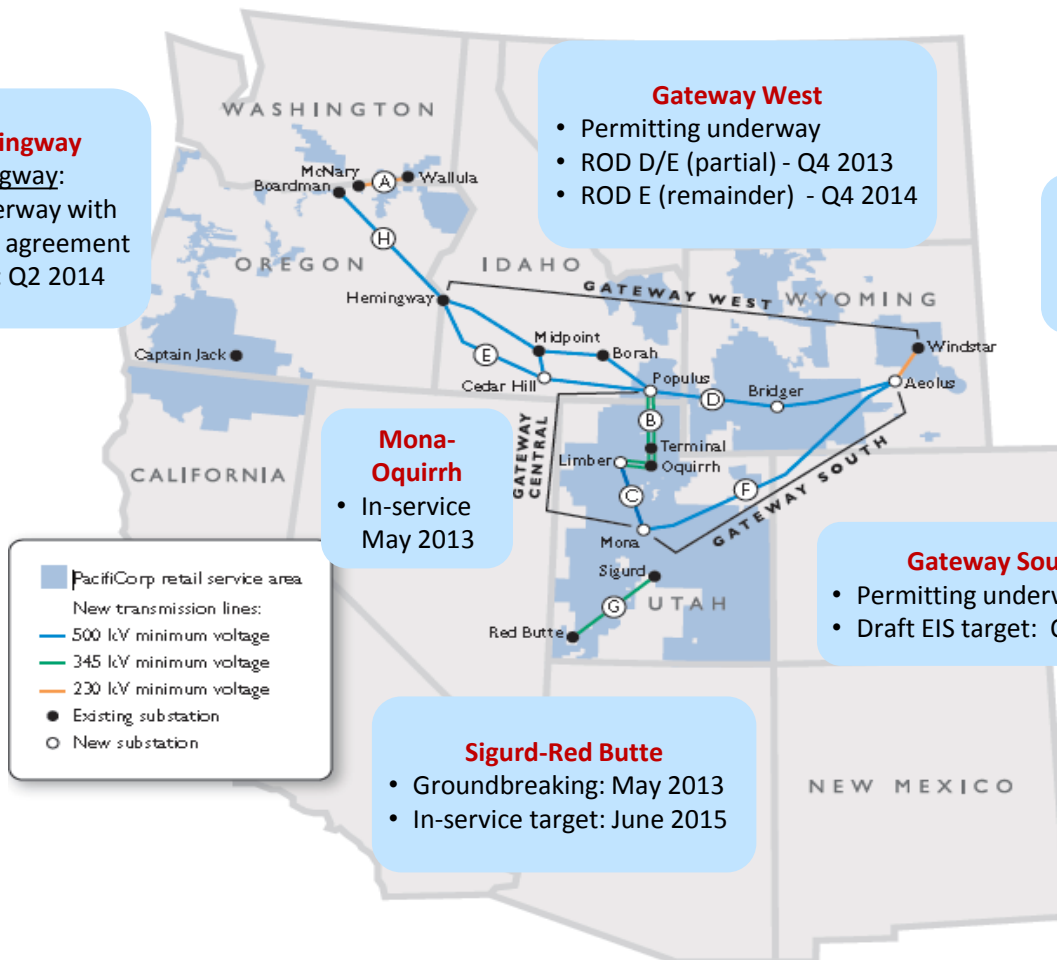
- In-service May 2013

Gateway South

- Permitting underway
- Draft EIS target: Q1 2014

Sigurd-Red Butte

- Groundbreaking: May 2013
- In-service target: June 2015

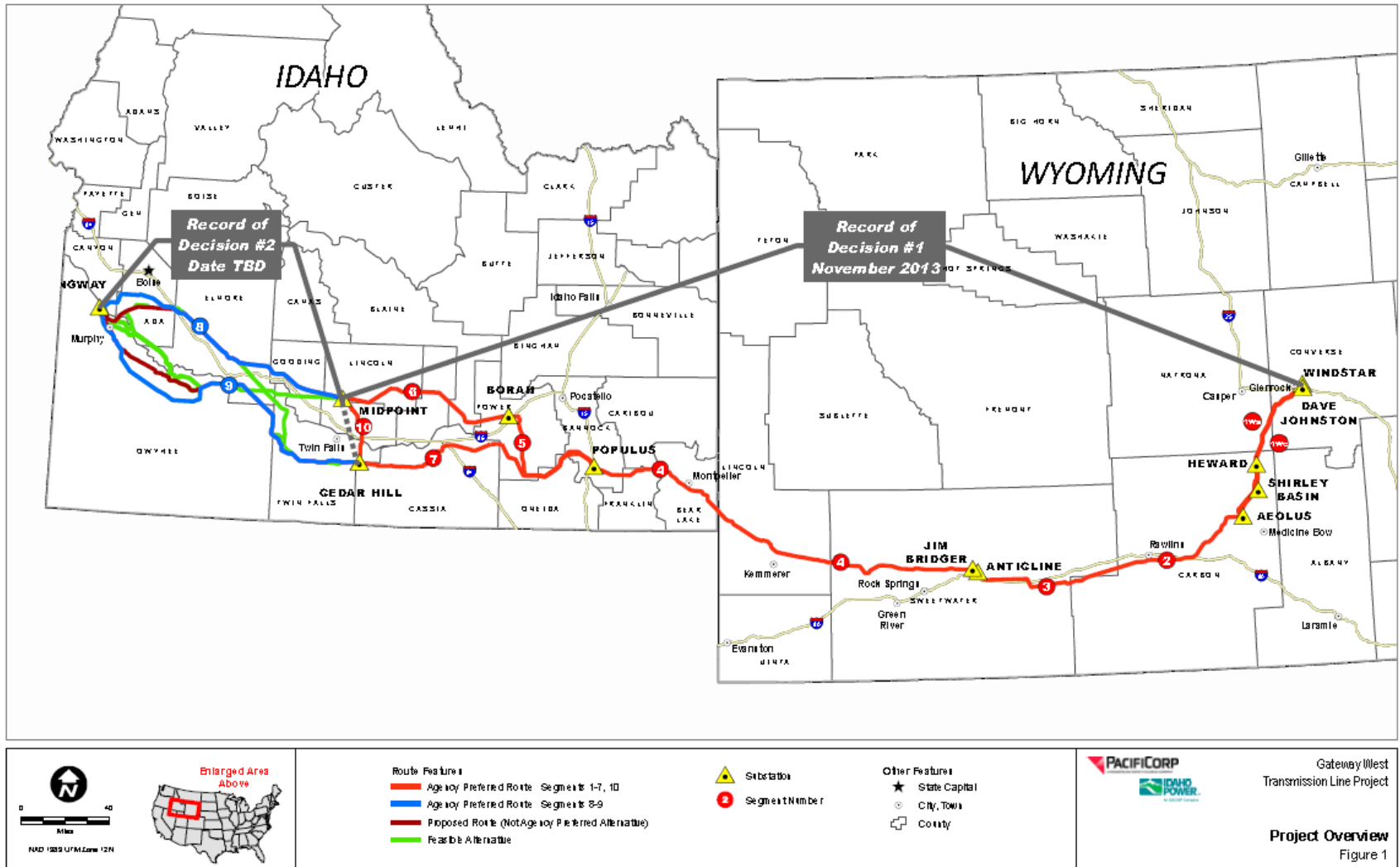


Sigurd to Red Butte (Segment G)

- 170 miles, single-circuit 345 kV line
- As of December 31, 2013:
 - 70 miles of construction access roads in place
 - 336 foundations installed – 42%
 - 268 towers installed – 33%
- June 2015 In-service Date



Gateway West Routing(s)



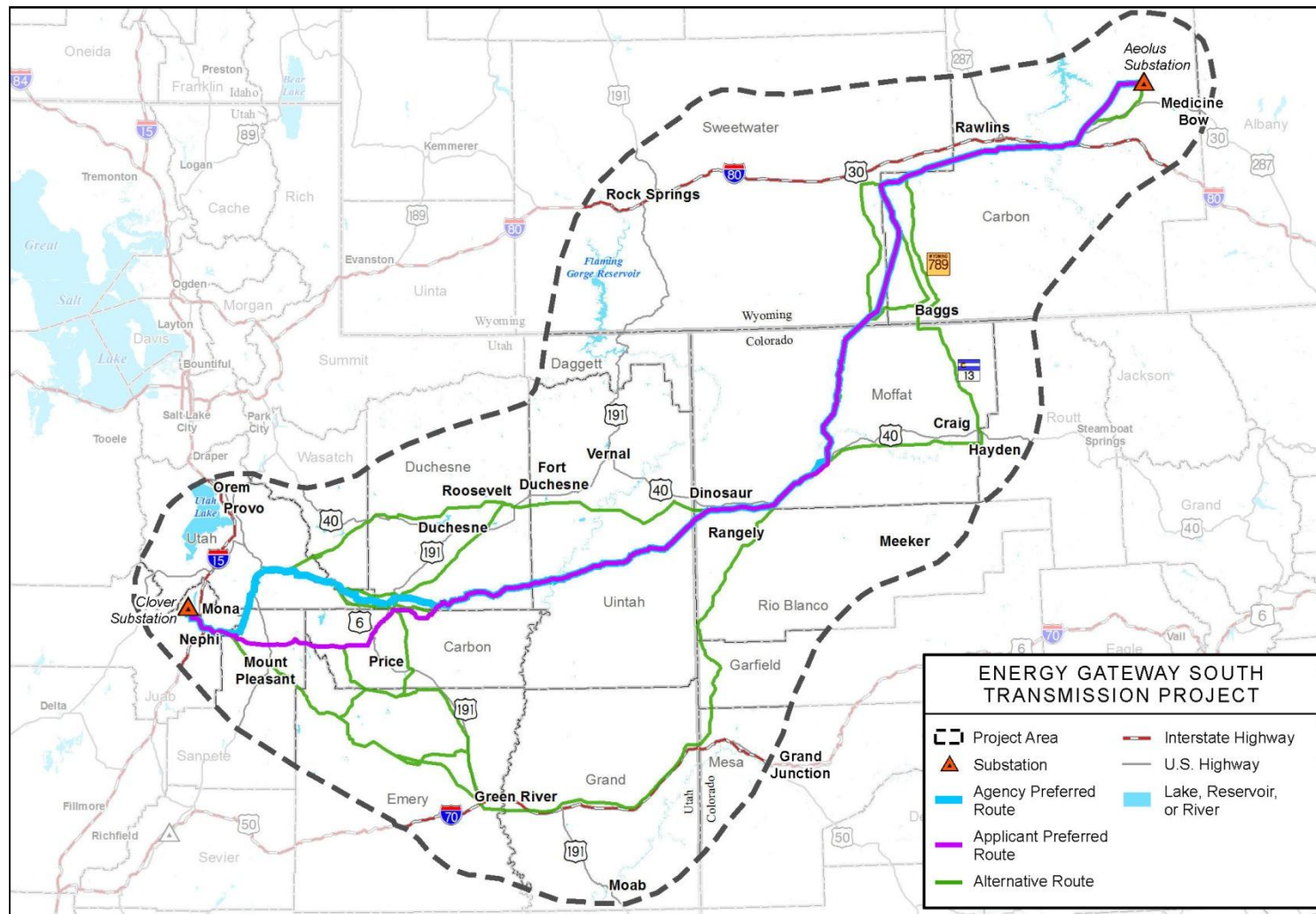
Gateway West Permitting Update

- U.S. Forest Service
 - Issued 2 records of decision in September 2013
- BLM
 - Issued a record of decision November 14, 2013
 - Windstar to Populus (Segment D) and Populus to Midpoint and Populus to Cedar Hill (Segment E partial)
 - Three appeals to IBLA
 - Permitting continues on remaining portions of Segment E from Midpoint to Hemingway and Cedar Hill to Hemingway
 - Record of decision possible in Q4 2014

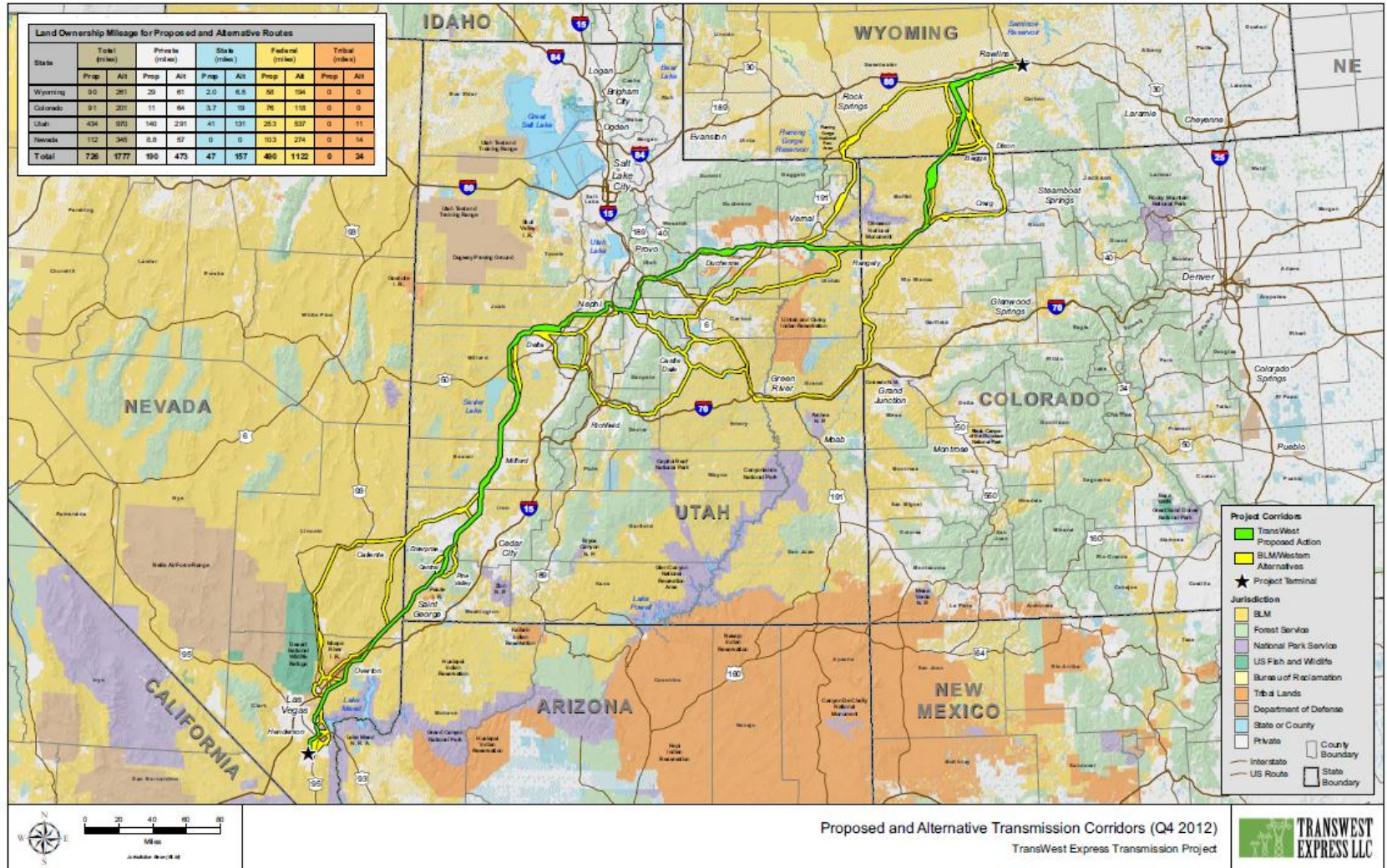
Gateway West Next Steps

- Assess impacts of deferred decision
- Update customer and system needs – 2014 IRP Update
- Timing for State and local permitting TBD
- Continuing work with Department of Interior leadership and RRTT
- Decision on when to start construction – currently being determined

Gateway South Routing(s)



TransWest Express Routing(s)



Gateway South EIS

- BLM issued preferred route on February 21, 2014
- A 90-day period for the public to comment period
- 12 open house meetings between March 10 and April 3 in Utah, Wyoming and Colorado
- The EIS is more than 2,400 pages
- Follows corridors of existing power lines
- Avoids key grouse habitat and other sensitive areas
- Offers 33 alternatives
- GS and TWE teams continue to cooperate to gain approval for both lines

Layers of Permitting

- National Environmental Policy Act
 - Publically discloses project impacts and mitigation
 - Is not consensus
 - No accountability to meet schedule
- Federal permits
- State permits
- Local land use permits
- Construction in Wyoming can't begin until 100% of ROW obtained station to station
- Other?

Gateway Central Permitting

Populus – Terminal 135 miles 345kV on Private Lands

Milestone	Date	Cumulative Duration
Project Start up	February 2007	
Stakeholder Meetings	Spring 2007	3 months
Detailed Corridor/Route Refinement	Summer 2007	7 months
Public Meetings	January 2008	1 year
Permit Applications CUPs & CPCN	Spring 2008	22 months
Project Construction	Summer 2008 - 2010	
Project Placed In-service	November 2010	3 years, 9 months

Gateway Central Permitting

Populus – Terminal 135 miles 345kV on Private Lands



Permitting Completed in 22 Months!

Gateway West Permitting

Gateway West (988 miles 230, 345 and 500 kV)

Milestone	Date	Cumulative Duration
SF299 Filed	Apr. 18, 2007	
Public Scoping	May 16, 2008	1 year 28 days
Draft EIS	July 29, 2011	4 years 3 months
Final EIS	Apr. 26, 2013	6 years 8 days
Record of Decision for most of project	Nov. 14, 2013	6 years 7 months



New Conservation Easements

- Natural Resource Conservation Service
 - Leverage for sage grouse mitigation
 - New easements being placed in designated corridors
 - May require rerouting
 - May require difficult and expensive eminent domain
- Worked with Rapid Response Transmission Team to engage USDA/NRCS to share information early on
- Can entities condemn conservation easements?

Land Owner Issues

- Property owners often overestimate the impact to their property and how they use it
- Courts have changed the constitutional basis for compensation for taking property for a public use
- Landowners have increasing desire for an ongoing income stream challenging the basis for traditional eminent domain valuations
- Challenge maintaining annual payments of 100 year life of transmission lines

Q & A

