

Renewables Scale Up: Large Solar & Wind Installations and Transmission Lines



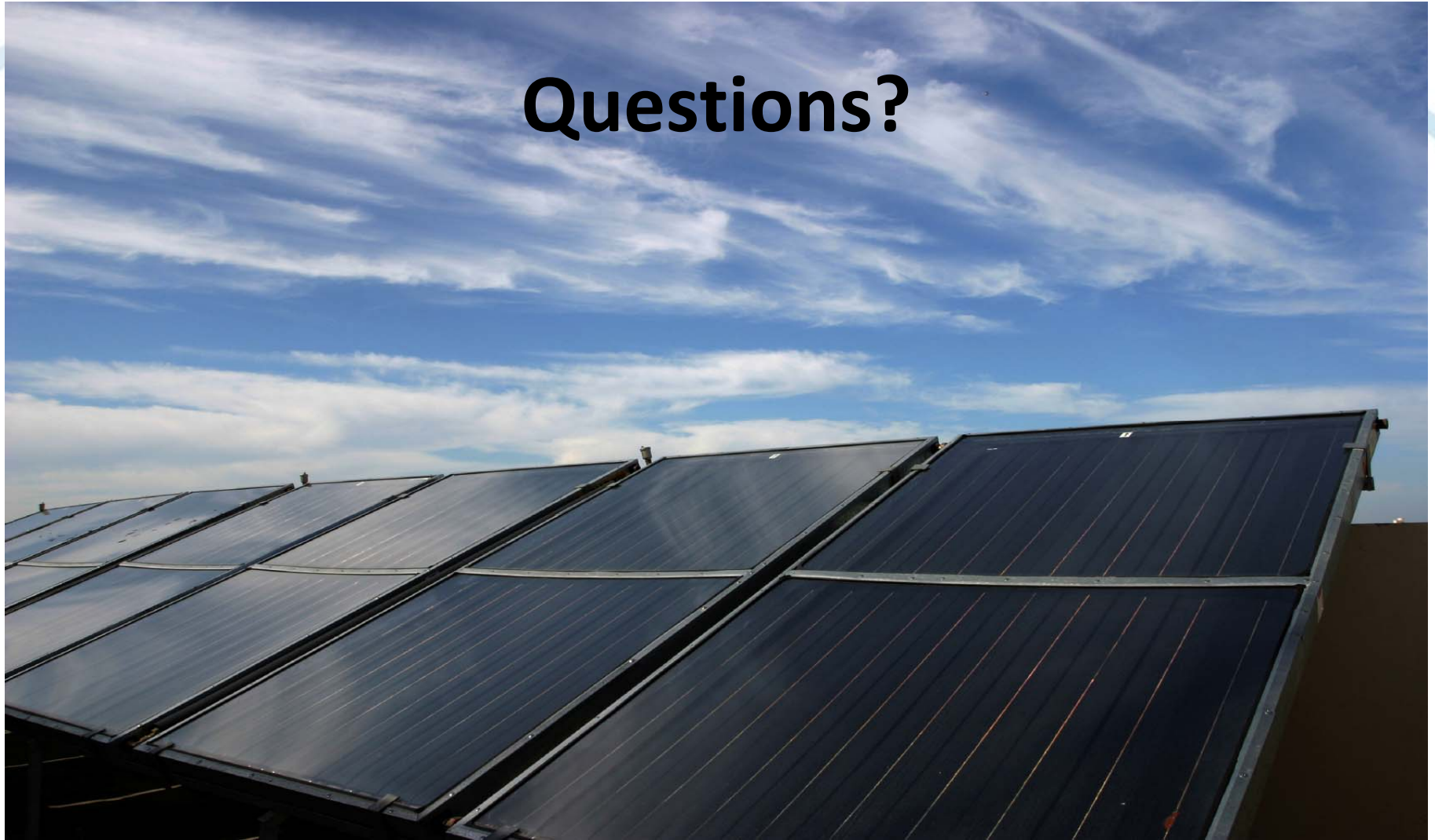
Rocky Mountain Land Use Institute March 4, 2010


Contact Information

- **Erica Heller:** eheller@clarionassociates.com
- **John Shepard:** JShepard@sonoraninstitute.org
- **Alex Daue:** alex_daue@twis.org
- **Mary Kay Peck:** mkpeck@mkpeckassociates.com



Questions?





What is the appropriate role for local, state
and federal government?



Speakers

- Alex Daue, Renewable Energy Coordinator, The Wilderness Society, Denver, CO
- Erica Heller, Associate, Clarion Associates, Denver, CO
- John Shepard, Senior Advisor, Sonoran Institute, Tucson, AZ
- Mary Kay Peck, FAICP, MKPeck Associates, Clearwater, FL



Key Objectives

- Learn the latest on renewables and transmission lines
- Find out the tools and approaches that work for local government
- Hear how to participate at the federal level
- Get engaged. Get involved. Be proactive.

