

From Planning to Partnering

Southern Nevada Strong Regional Plan Implementation



SOUTHERNNEVADA STRONG

OUR VALLEY. OUR VISION. OUR FUTURE.

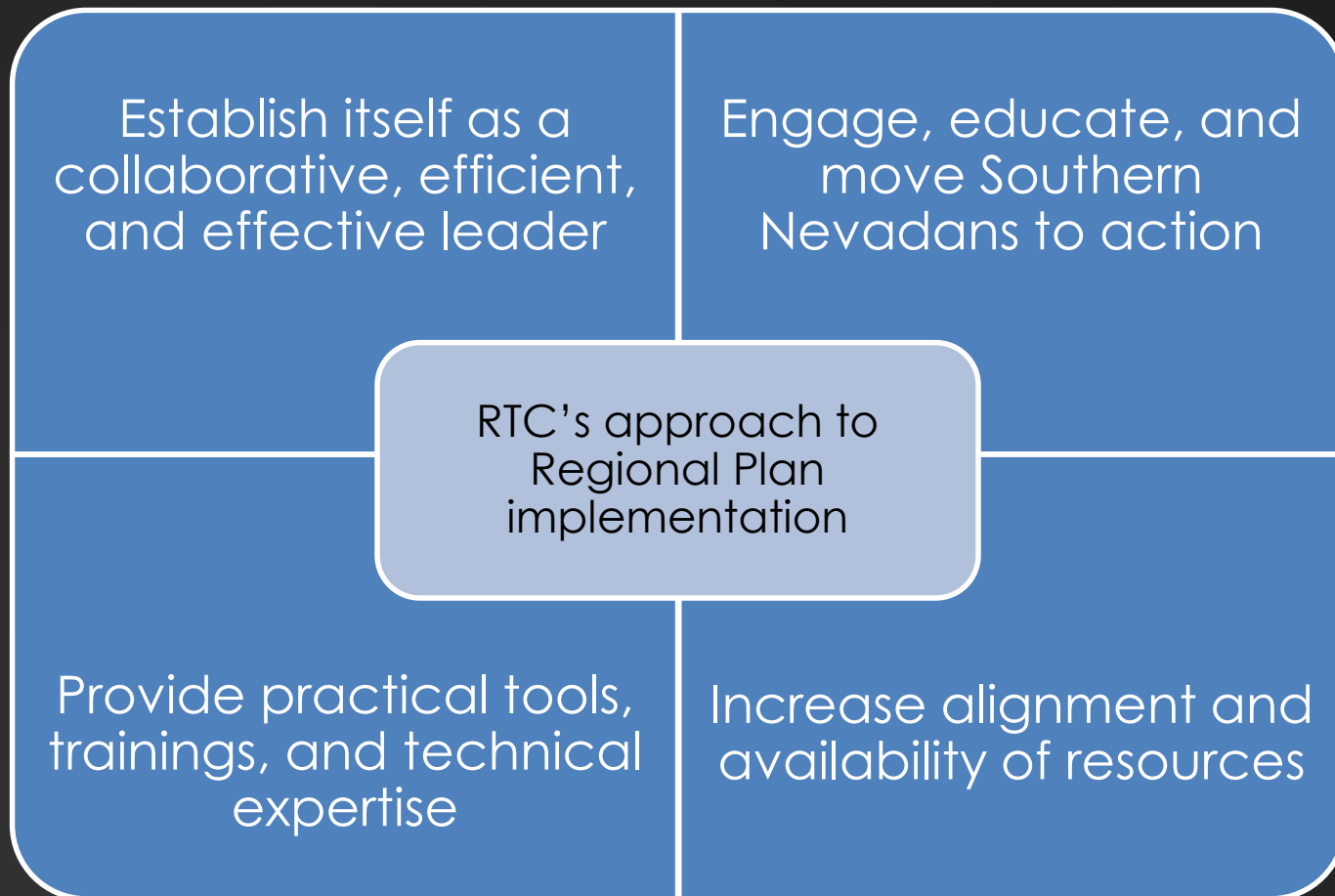




What is Southern Nevada Strong?



Community Benefits



SNS Approach



SOUTHERNNEVADASTRONG

OUR VALLEY. OUR VISION. OUR FUTURE.



Utah's Wasatch Choice for 2040

—— Rocky Mountain ——
Land Use Institute



Utah Challenges



**“Immigrants turn
Utah into mini-
melting pot”**



The Greater Wasatch Vision for 2040

The Greater Wasatch is one region, stretching from Weber County south to Utah County and from Tooele County east to the Wasatch-Bash. We compete economically with other regions, compete for jobs and housing markets, and share the same air and water. Where and how we shape tomorrow's neighborhoods, communities, and economic centers, within our region will dramatically affect the quality of our lives, including how much time and money we spend getting around, the quality of the air we breathe, and the choices we have available to live, work, shop, and play.



Built on 20-year
foundation of
collaborative
visioning

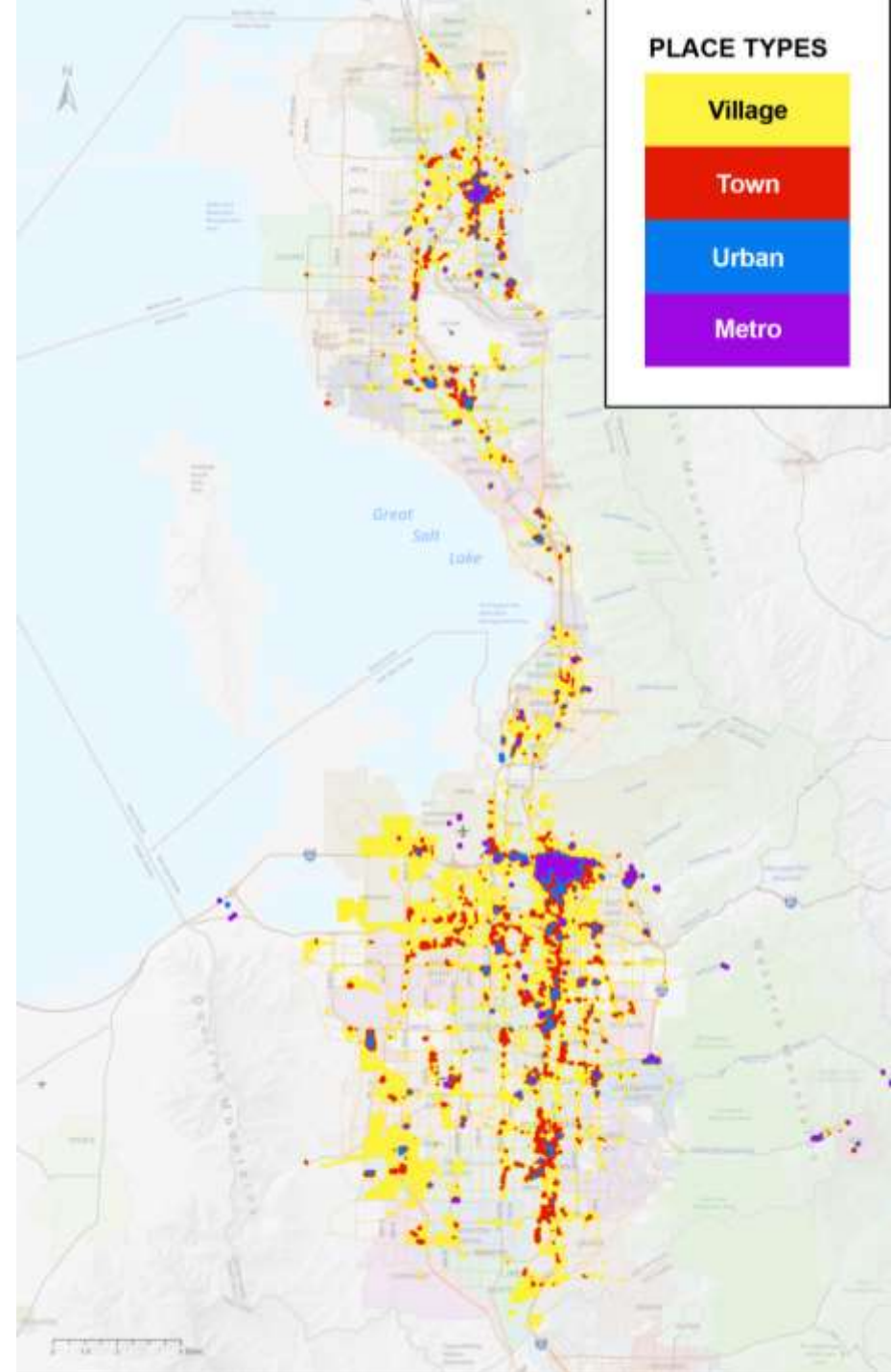
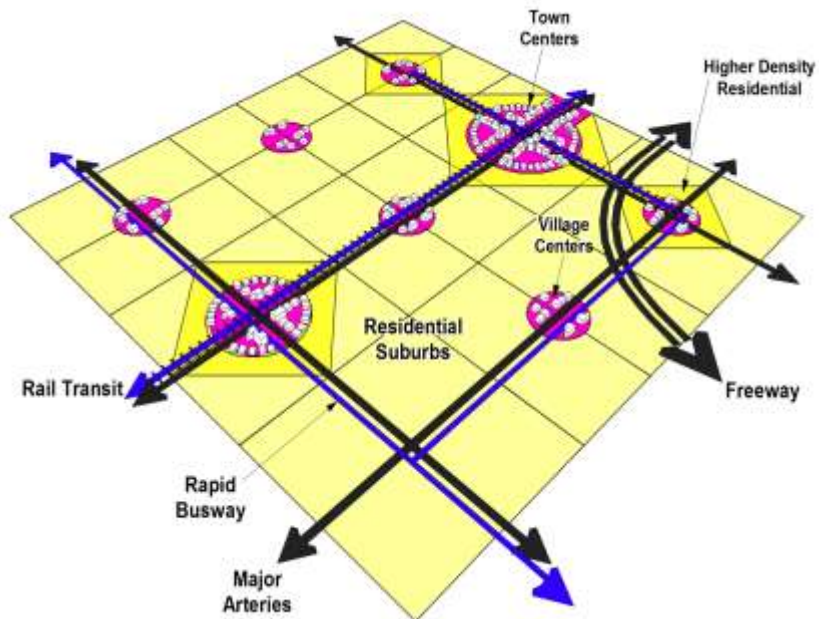
Key Lessons Learned



1. Neutral facilitation stance
2. Diverse coalition
3. High level participation
4. Grassroots, representative involvement
5. Use scenarios to explore choices
6. Inform decisions with performance metrics
7. Draw a nexus from input to products
8. Communicate to community values

3% Strategy

Targeted growth =
Big benefits



Wasatch Choice for 2040 Tools



Process Guide:
Envision Centers



Scenario Exploration:
Envision Tomorrow



StreetPlan



Form Based Code



Housing and Opportunity Assessment



Implementing Centers

Transportation and Land Use Connection Program

\$600,000 Annual Program

- Help communities balance local and regional needs
- Mitigate growth in travel demand
- Assist in use of the WC2040 Tools



Utah's Wasatch Choice for 2040

—— Rocky Mountain ——
Land Use Institute



Denver Region Sustainable Communities Initiative



DENVER REGIONAL COUNCIL OF GOVERNMENTS

We make life better!



SUSTAINABLE COMMUNITIES INITIATIVE

DENVER REGIONAL COUNCIL OF GOVERNMENTS

Sustainable Communities Initiative

The Denver region's goal:
Align investments, programs
and policies to maximize the
benefits that result from the
region's investment in transit
through collaborative
planning and stakeholder
engagement.



Overall Project Approach

Regional (Metro Vision)



Corridor (rapid transit)



Site (catalytic project)



Capacity Building

Grassroots education and skills training

Learn from a broad range of constituencies

Remove barriers to engagement

Visualize abstract issues

Opportunities for Input

Regional Citizens' Advisory Committee
Staffed by DRCOG

Corridor Stakeholder Committees
Staffed by DRCOG

Interactive community meetings

Decision-Making

DRCOG Board
Regional policy and implementation

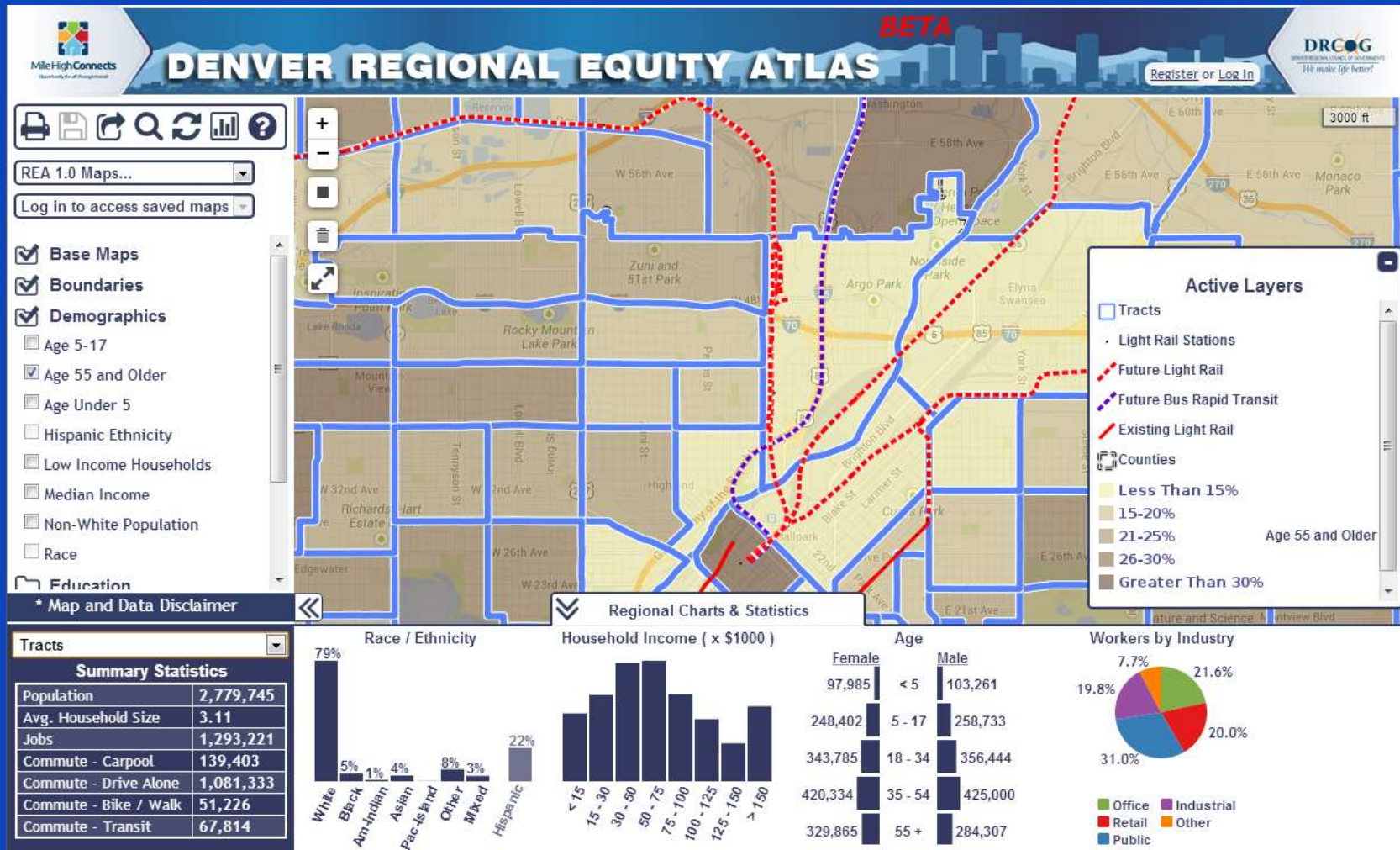
Corridor Working Groups
Planning and implementation priorities

Partner Overview

- ◆ DRCOG: Corridor stakeholder committees
- ◆ Transit Alliance: Engagement, learning, and collaboration
- ◆ FRESC: Grassroots outreach and capacity building
- ◆ PlaceMatters: Meeting support and visualization tools



Regional Equity Atlas – v. 2.0



Denver Region Sustainable Communities Initiative



DENVER REGIONAL COUNCIL OF GOVERNMENTS

We make life better!



SUSTAINABLE COMMUNITIES INITIATIVE

DENVER REGIONAL COUNCIL OF GOVERNMENTS