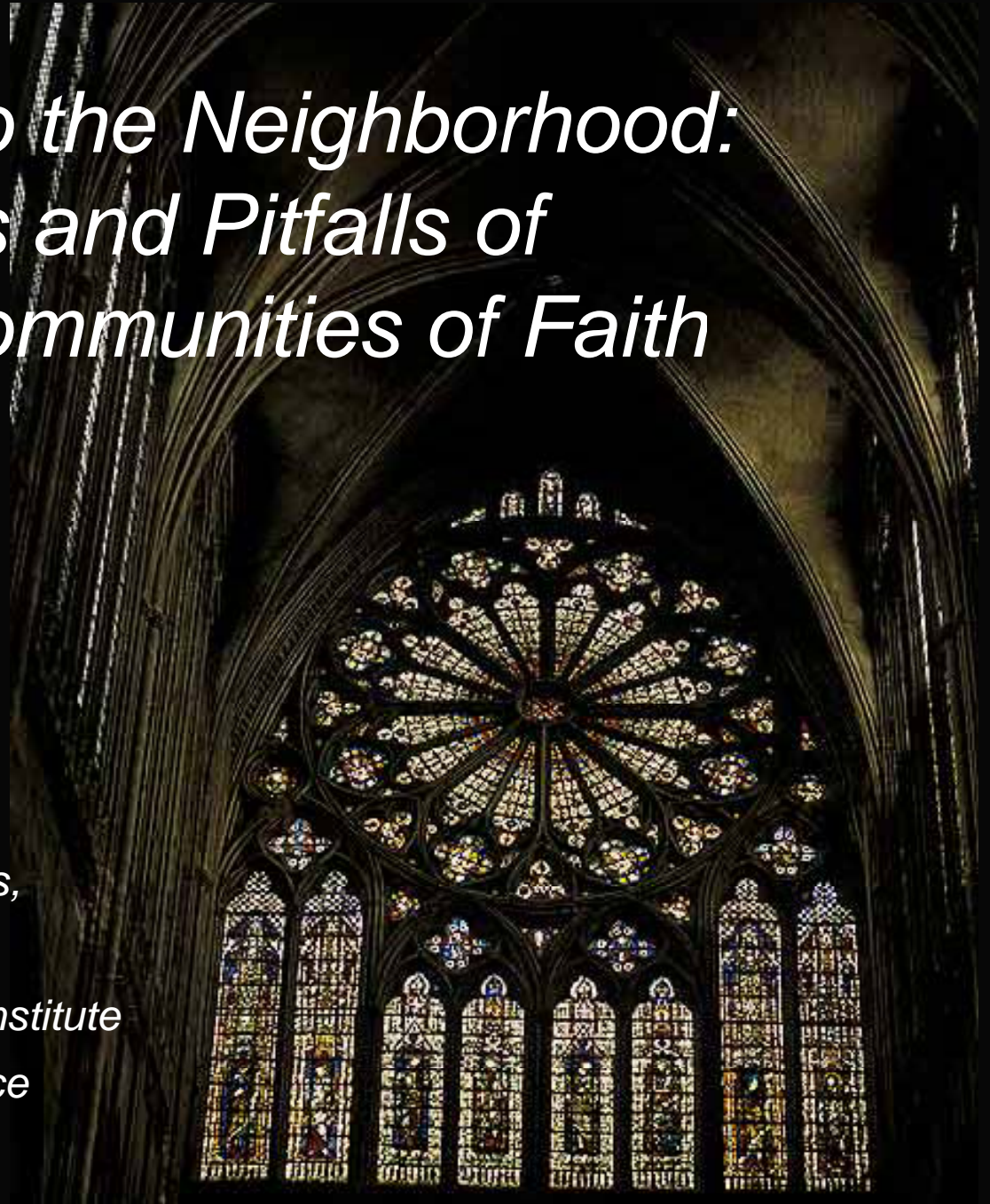


# *Putting Soul into the Neighborhood: The Possibilities and Pitfalls of Working with Communities of Faith*

*James van Hemert,  
Director of Development Services,  
Duncan, British Columbia  
The Rocky Mountain Land Use Institute  
19th Annual Land Use Conference  
March 5, 2010*



- **Rev. Eric O. Jacobson**, Senior Pastor,  
First Presbyterian Church, Tacoma,  
Washington
- **James van Hemert**, Director of  
Development Services, Duncan, British  
Columbia

# Historic influence of communities of Faith

- Colonial
  - Spanish Law of the Indies
- Western Expansion



Mormon Tabernacle, Salt Lake City , Utah



Santa Fe Plaza, Santa Fe, New Mexico

# Historic influence of communities of Faith

## Pre WWII



First Christian Reformed Church  
Denver, Colorado



Prince of Peace Lutheran Church,  
Colorado Blvd., Denver

## Post WWII



# Contemporary communities of faith



Marilyn Hickey  
Ministries, Denver  
Converted shopping  
mall



Church of the Nazarene  
Castle Rock, Colorado  
Industrial warehouse

# Contemporary communities of faith



Saddleback Church  
Lake Forest, California



Doing it large...  
must be somewhere in Texas

# Contemporary communities of faith



Café and  
bookstore at  
Canyon View  
Vineyard Church  
Grand Junction,  
Colorado

# Contemporary communities of faith



Faith based voluntary organizations

Volunteers build houses for  
hurricane evacuees,  
Shreveport- Bossier Community  
Renewal program, Shreveport,  
Louisiana





# Contemporary communities of faith



Separation does not mean no dialogue

image: Air America Radio

# Contemporary communities of faith

## **RLUIPA**

(Religious Land Use and Institutionalized  
Persons Act)

- ❖ Equal Treatment
- ❖ No discrimination
- ❖ No exclusion
- ❖ No unreasonable limits

# Contemporary communities of faith RLUIPA Practical Guidance

1. Review ordinances
2. Train staff
3. Appoint staff liaison
4. Flag cases
5. Draft Findings of Fact
6. Do not discriminate
7. ENGAGE faith communities

# Call for renewing the partnership

