

A scenic view of a lake in Chicago, likely Lake Michigan, with the city skyline visible in the background. The foreground is filled with lush green trees and vibrant pink flowers. The water reflects the city buildings and the surrounding greenery. The text "Chicago Wilderness" is overlaid in a white serif font on the left side of the image.

Chicago Wilderness



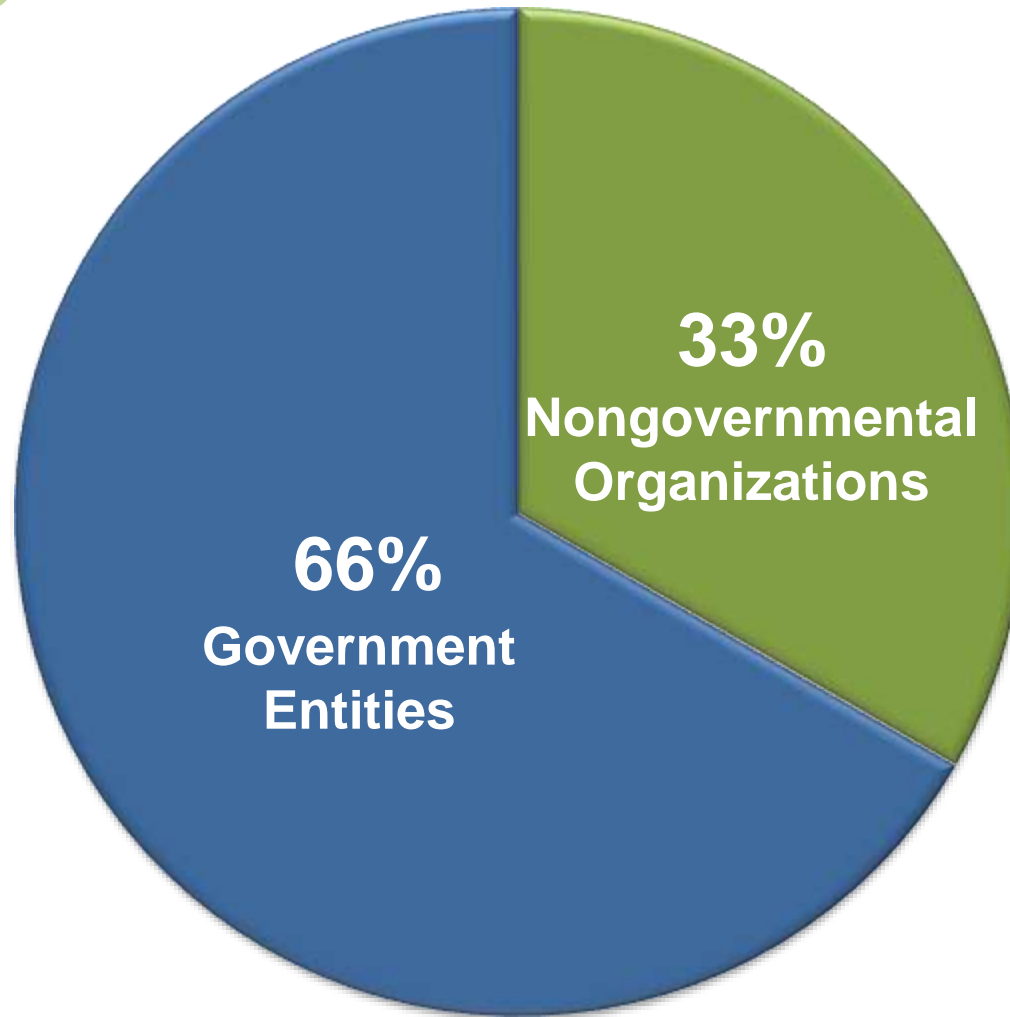




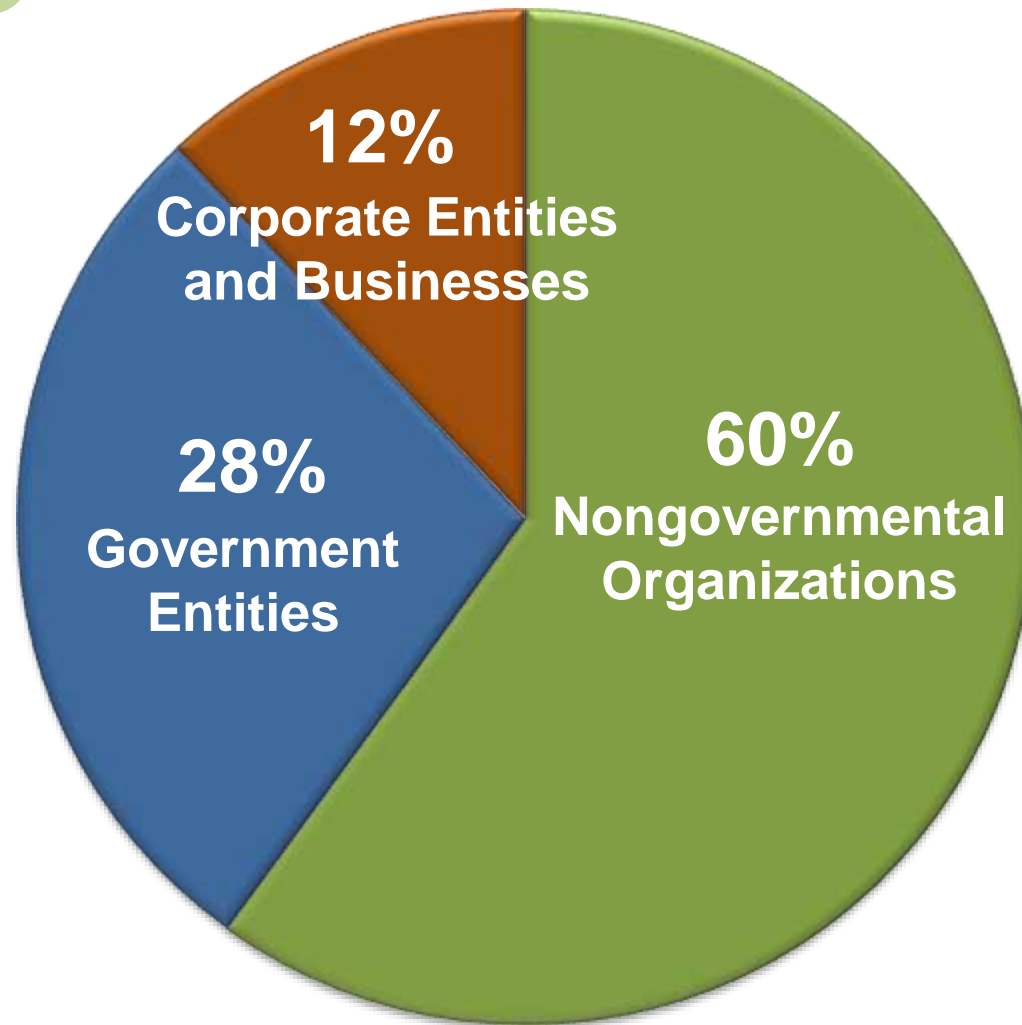
305 organizations



1996



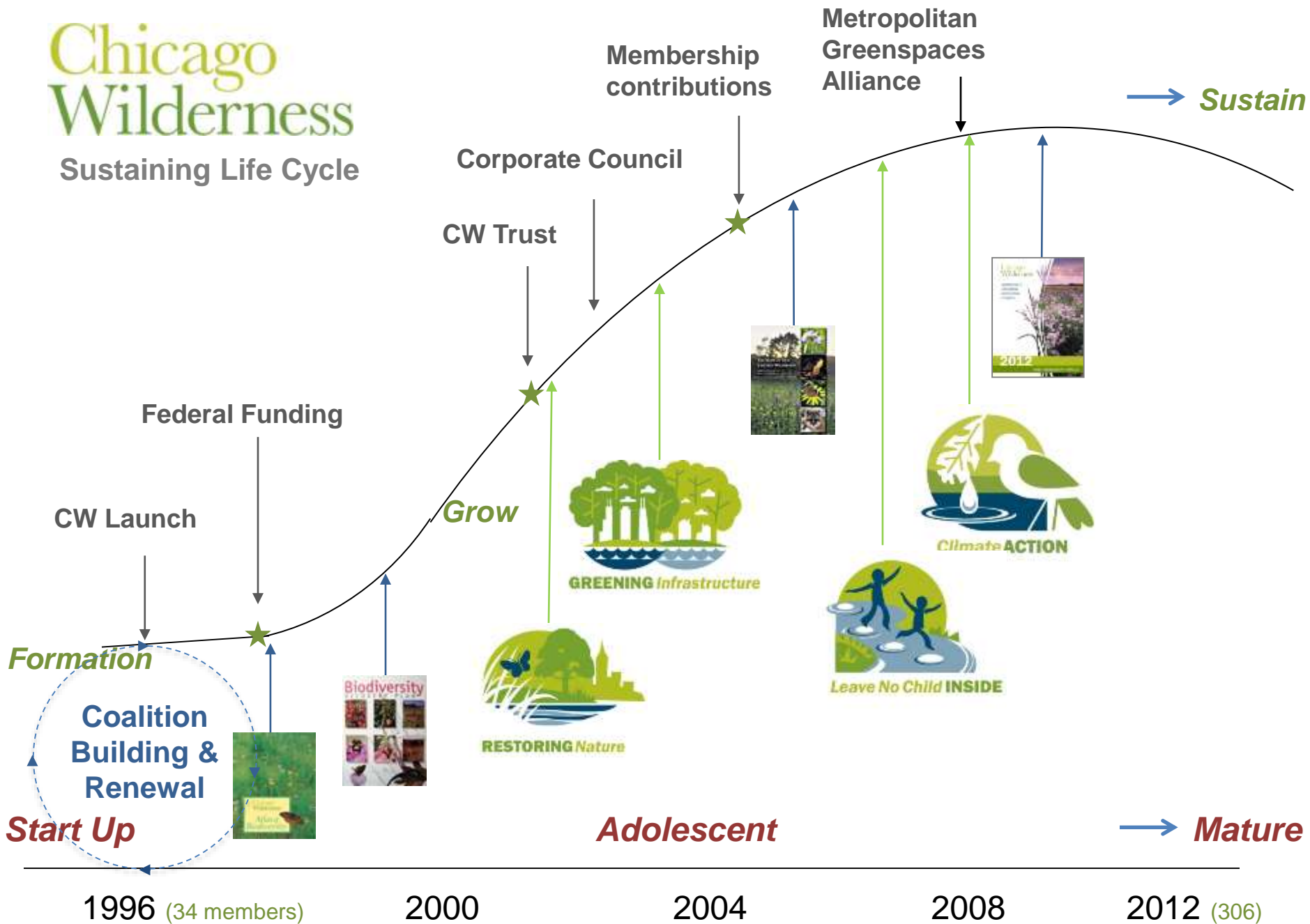
2013





Chicago Wilderness

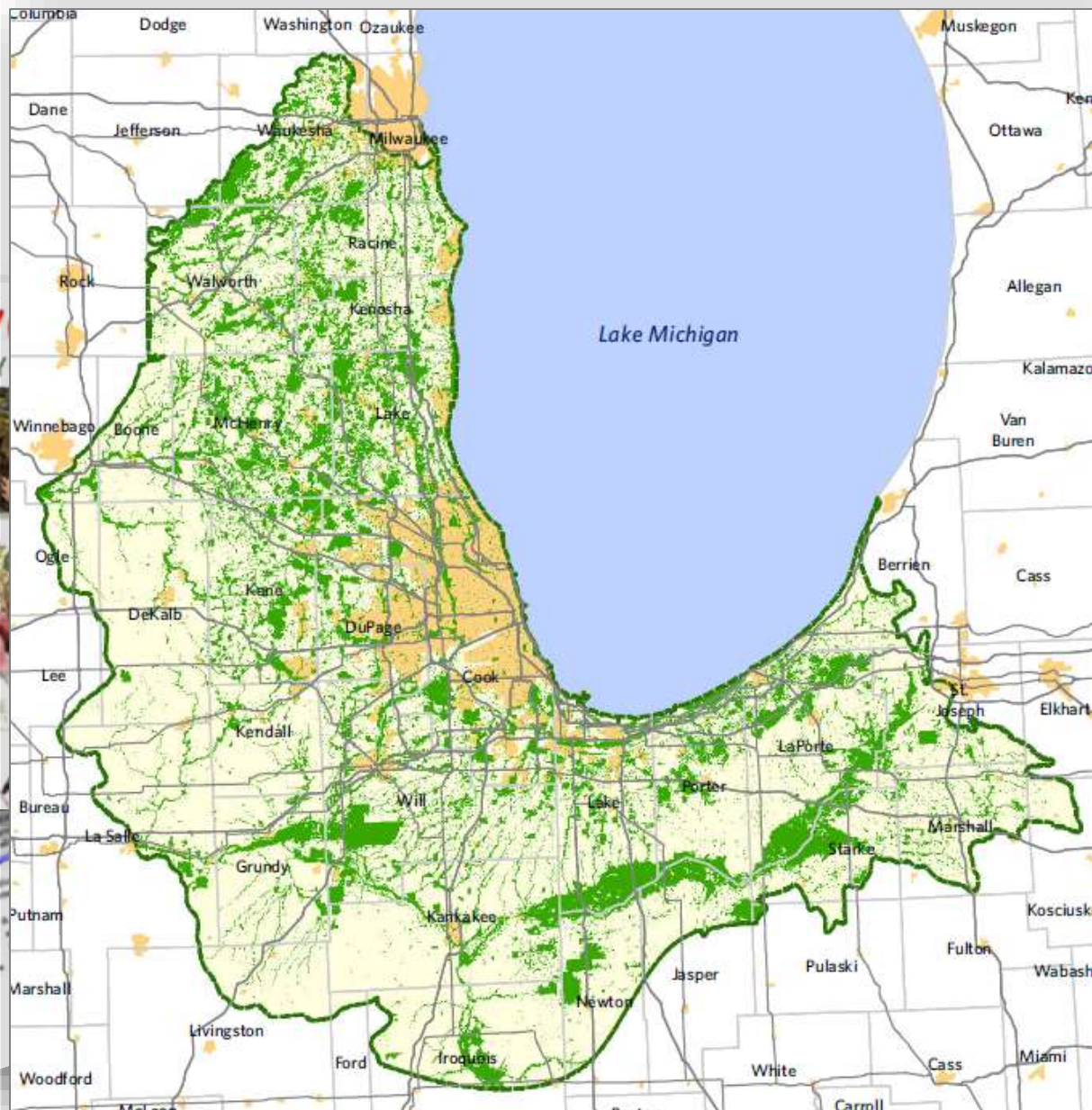
Sustaining Life Cycle



Biodiv RECOVERY



The regional
distribution



Chicago
Wilderness





Commission on Excellence in Ecology
Restoration and Native Landscaping

Sustainability Team

Natural Resources Management

Executive
Council

**Leave No Child Inside
Task Force**

Species Vulnerability Working Group

100 Sites for 100 Years

Knowledge Base Working Group

Chicago Wilderness Teaching Academy

**Climate Change
Task Force**

Task Forces and
Working Groups

Waukegan LNCI Steering Committee

GIV and Climate Change Working Group

and Action

Working Group

Structure Vision

Congress Plan

Wildlife Task Force

Climate Change Education & Outreach

on Team

Working Group

ULTRA

Mighty Acorn

Congress Youth Engagement

nt Relations Committee

Water Working Group

Index for Conservation

Species

Disciplinary Teams and
Interdisciplinary Initiatives

Group

Group

METROPOLITAN GREENSPACES ALLIANCE

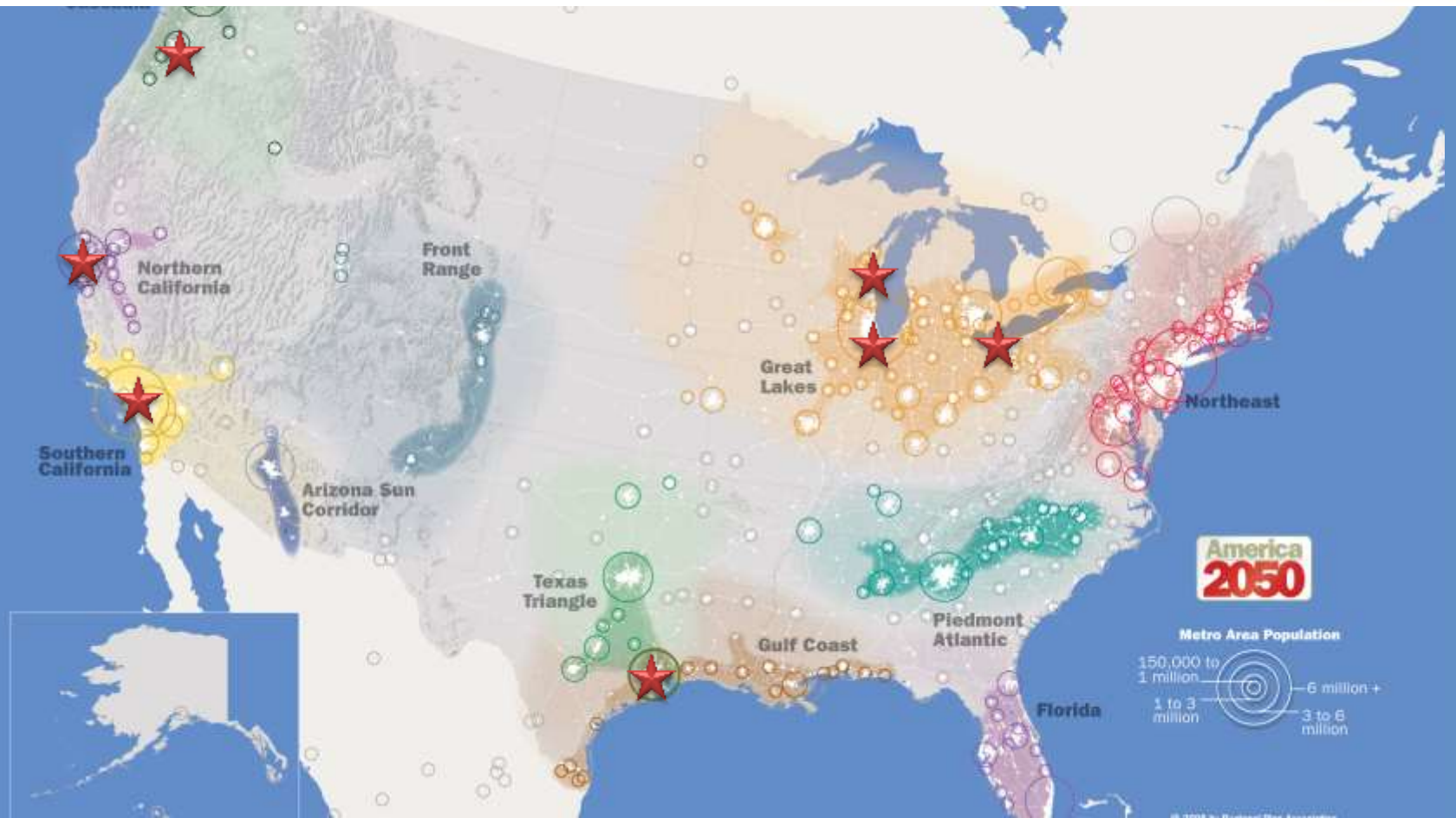
Chicago
Wilderness



SOUTHEASTERN
WISCONSIN
WATERSHEDS
TRUST, INC.



BAY AREA
OPEN SPACE COUNCIL



A landscape photograph of a wetland area at sunrise. The foreground is filled with dense, green and yellow wildflowers. In the middle ground, there is a body of water reflecting the bright sun. A single, dark tree stands on the horizon line, silhouetted against the bright sky. The sky is a mix of orange, yellow, and blue.

Chicago Wilderness