

# Pooling Our Resources: Linking Land Use Planning and Sustainable Water Quality



RMLUI

March 7, 2008

# Presenters:

1. Betty Solek  
City of Boulder
2. Cynthia Peterson  
AWARE Colorado  
Nonpoint Source Education for Municipal Officials  
(NEMO)
- Robin Reilley  
Denver Regional Council of Governments  
(DRCOG)

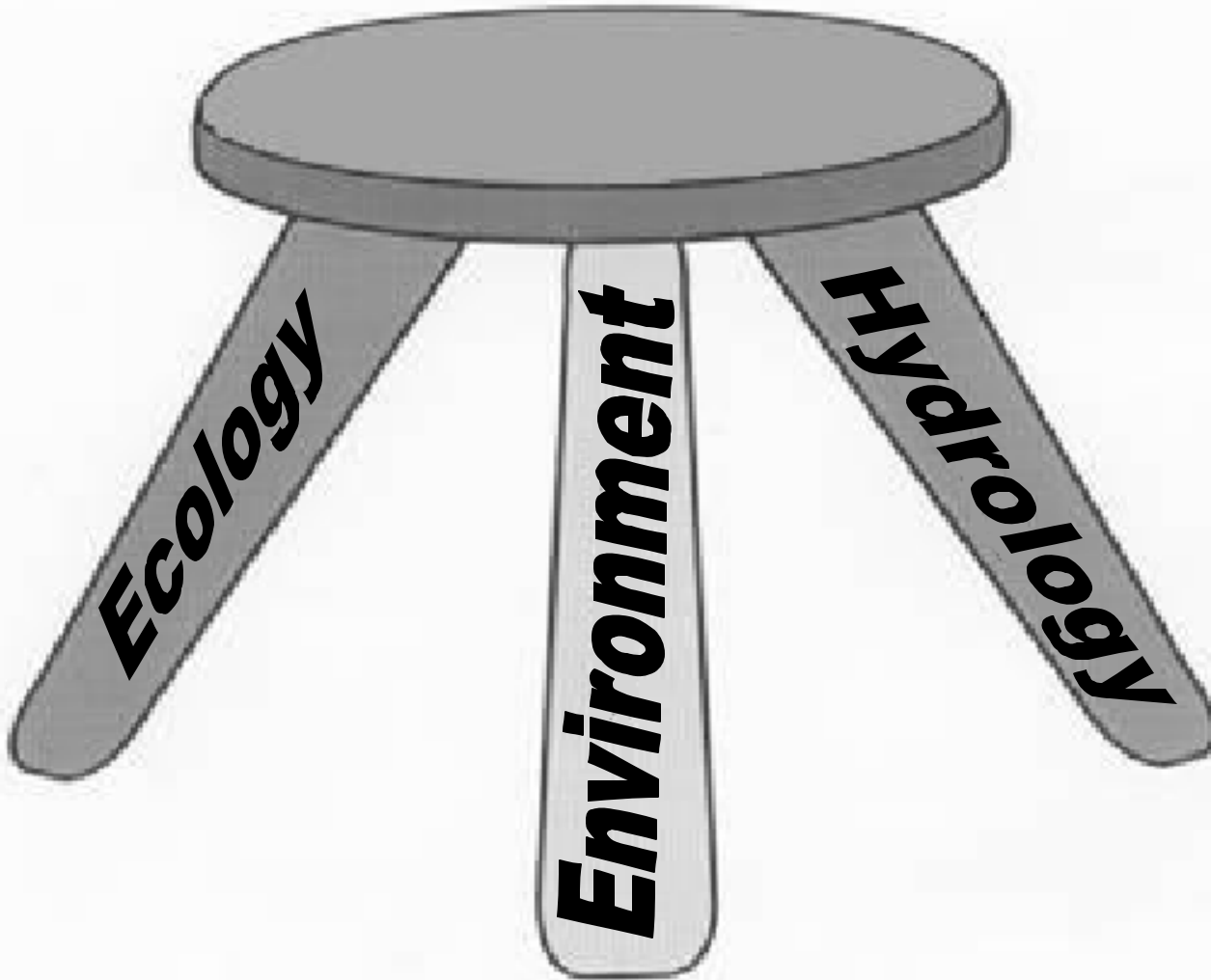
# What is sustainability?

“Sustainability is the capability to equitably meet the vital human needs of the present without compromising the ability of future generations to meet their own needs by preserving and protecting the area’s ecosystems and natural resources. The concept of sustainability describes a condition in which human use of natural resources, required for the continuation of life, **is in balance with Nature’s ability to replenish them.**”

-APA, Policy Guide on Planning for Sustainability, 2000

# Workable definition of *sustainability* for Water Quality

"Sus  
thos  
cont  
and  
ecol  
hydi  
-Ame

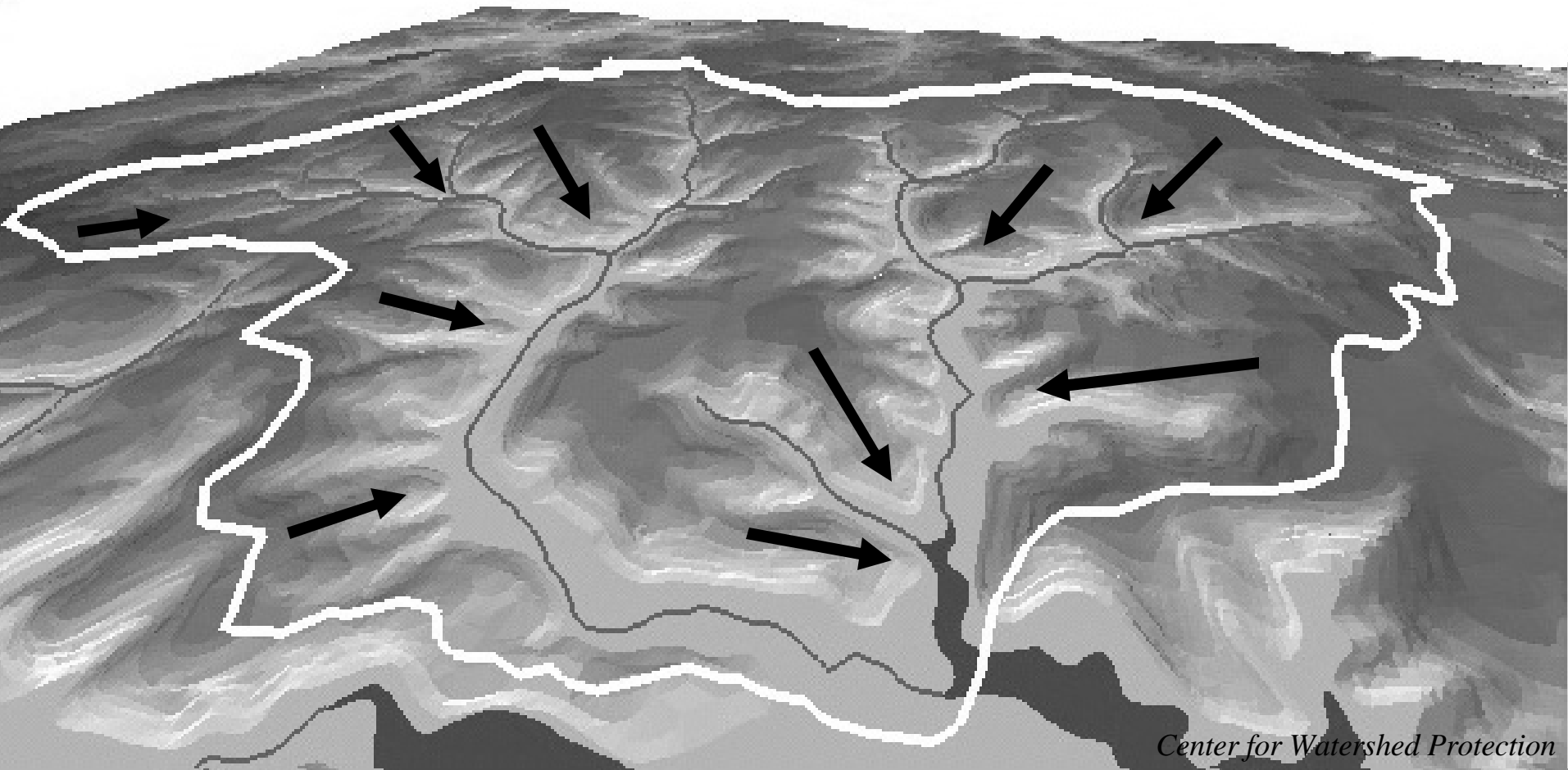


are

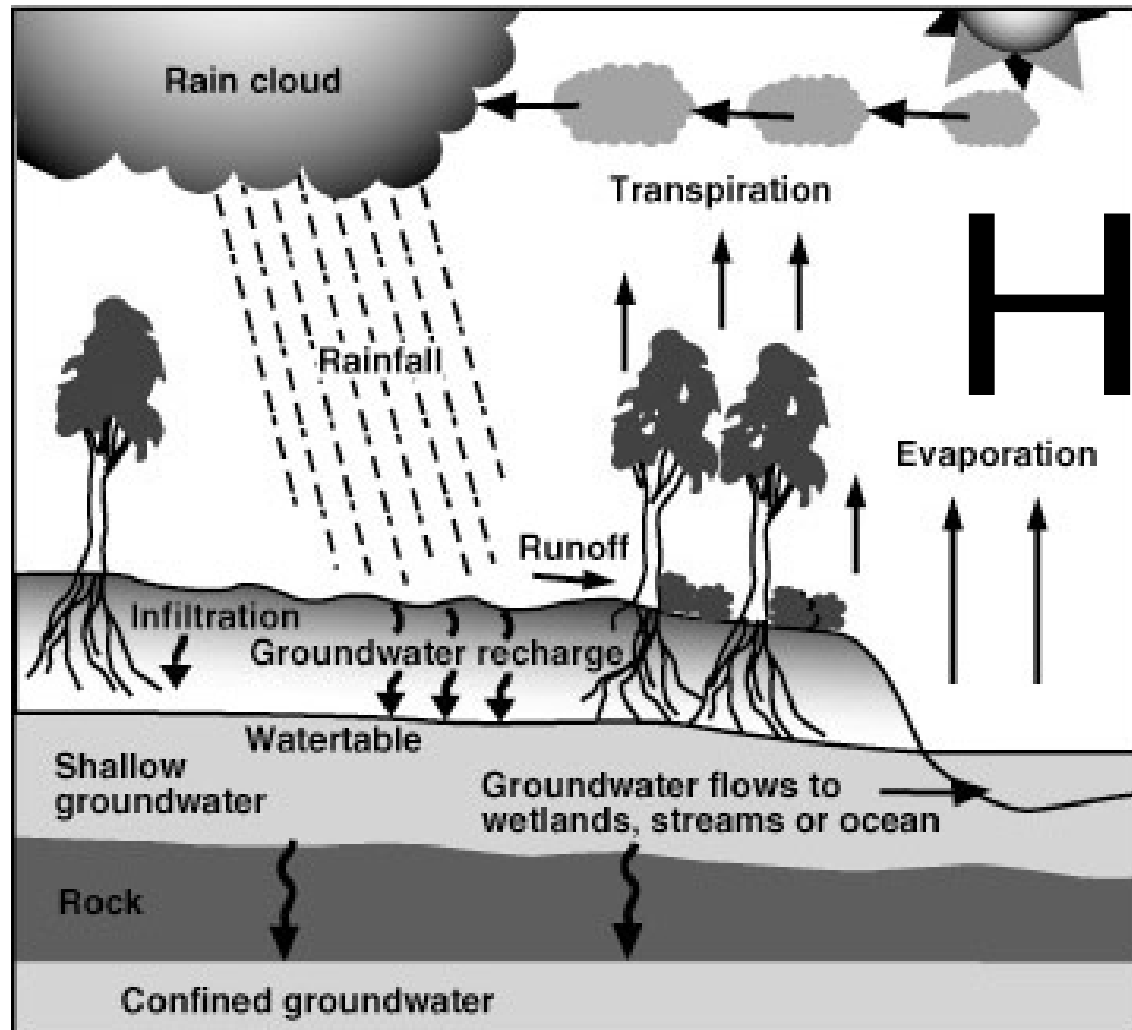
now  
eir

# What is a Watershed?

A watershed is the area of land that drains to a particular point along a stream



# Water Cycle



H<sub>2</sub>O

Use these principles to guide policies and decisions towards a sustainable future:

- Use a watershed approach
- Prevent pollution at its source.
- Integrate water quality and quantity issues
- Seek and involve all stakeholders
- Develop the best scientific information recognizing future improvements.

# A Watershed is About Land & Water Management



## WATERSHED MANAGEMENT IS AN IMPORTANT STRATEGY

Source Water Protection

Water Conservation

Nonpoint Source Pollution

Wastewater Treatment &  
Discharge

Reuse/reclaim Wastewater

Groundwater



Open Space

Recreation

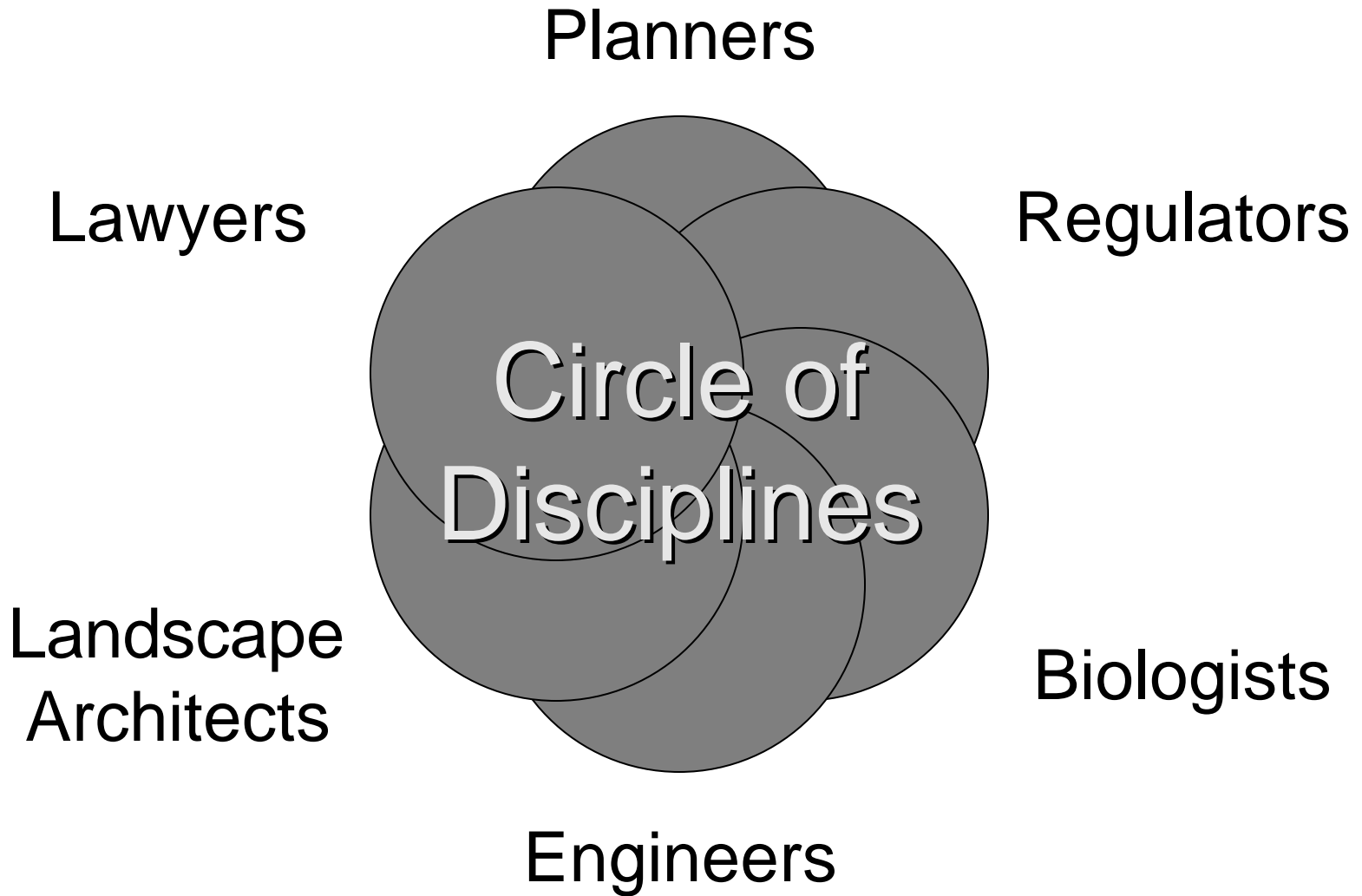
Development

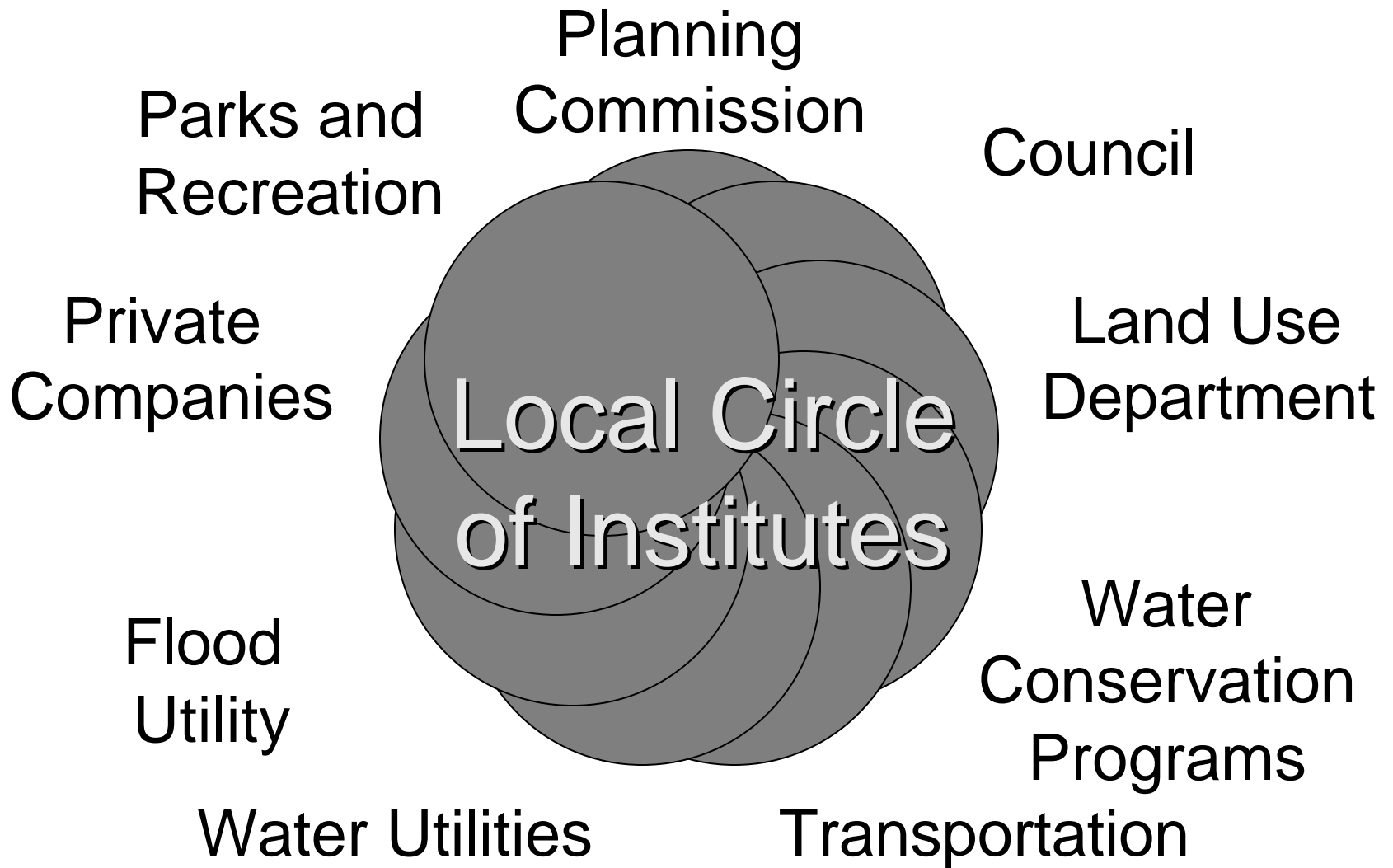
Runoff

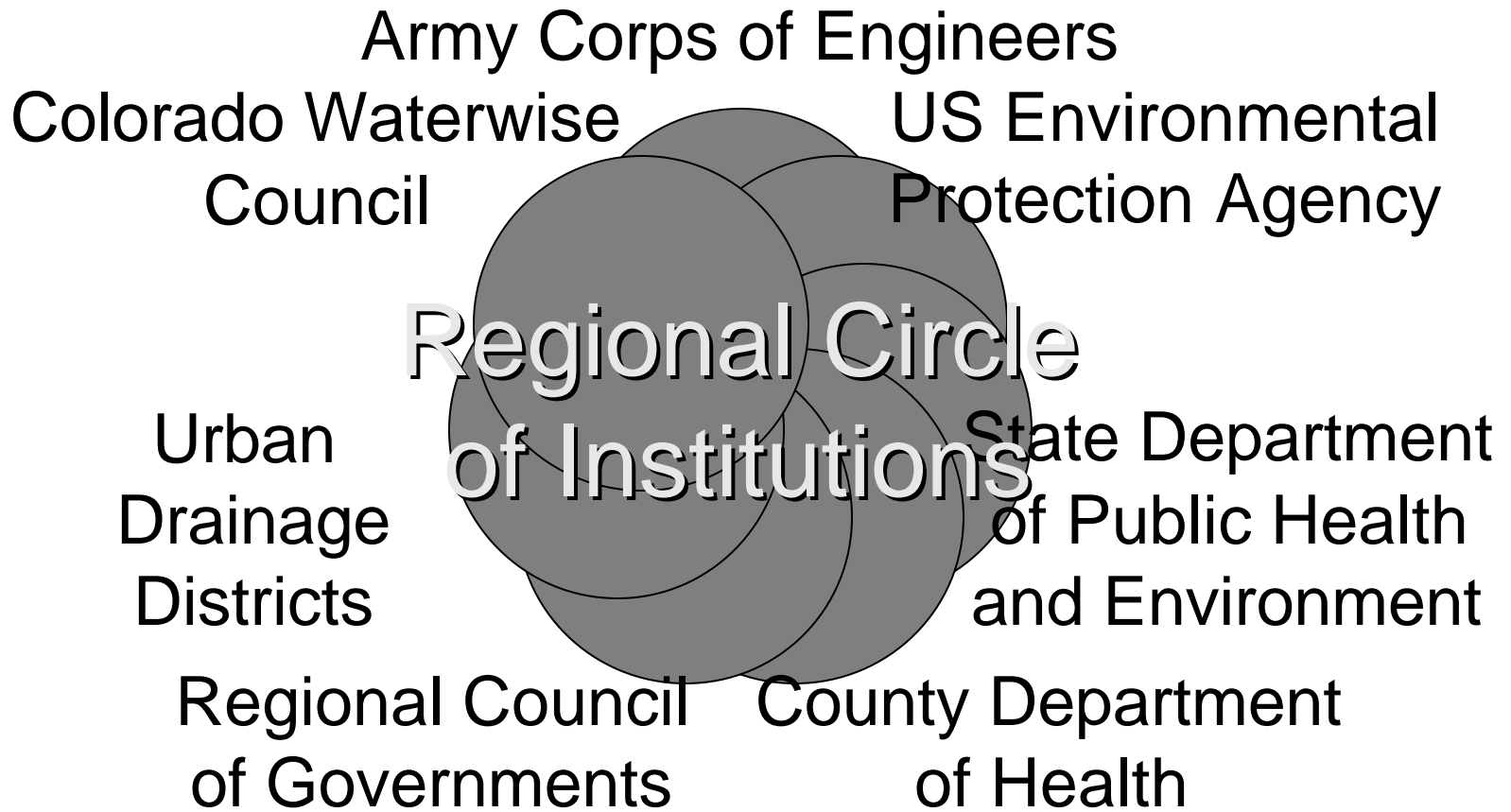
Quality of Life

Fishing

Aquatic Ecosystems

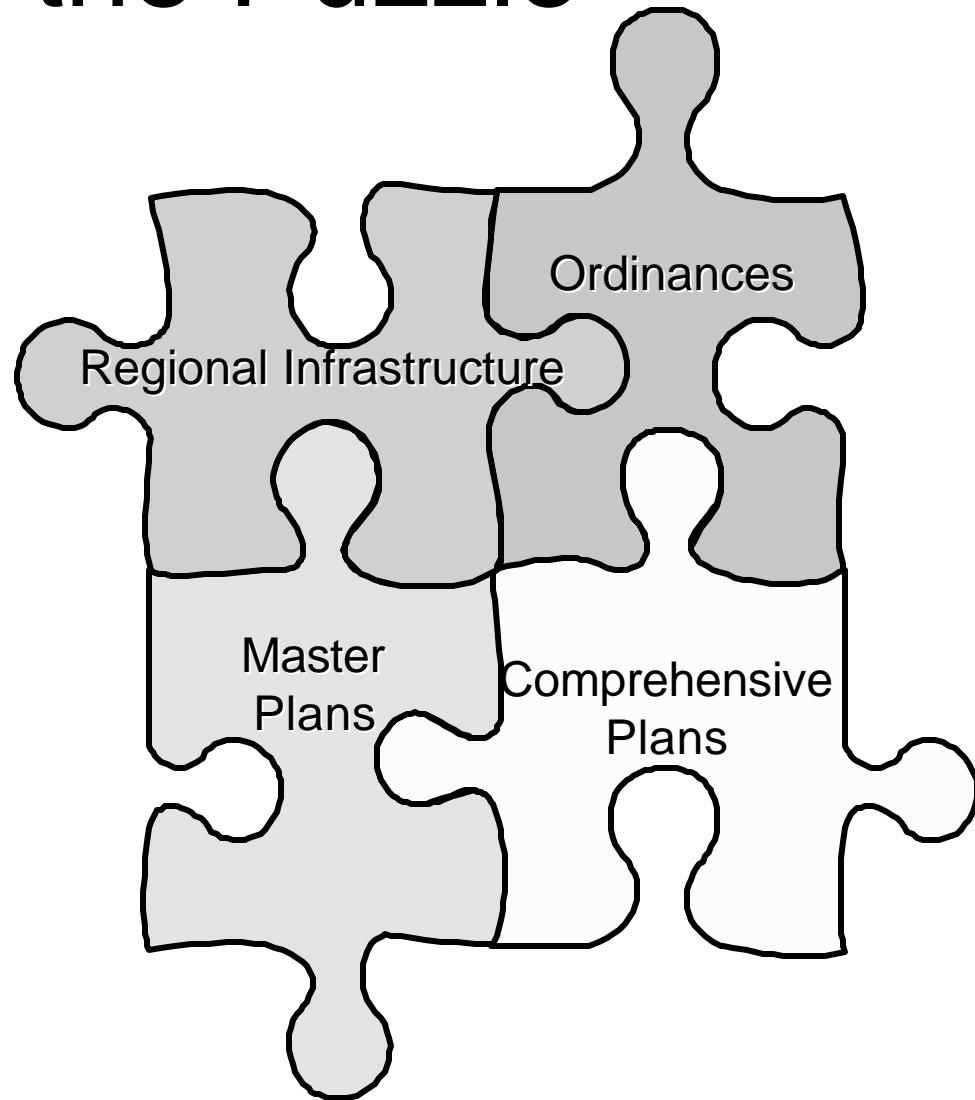






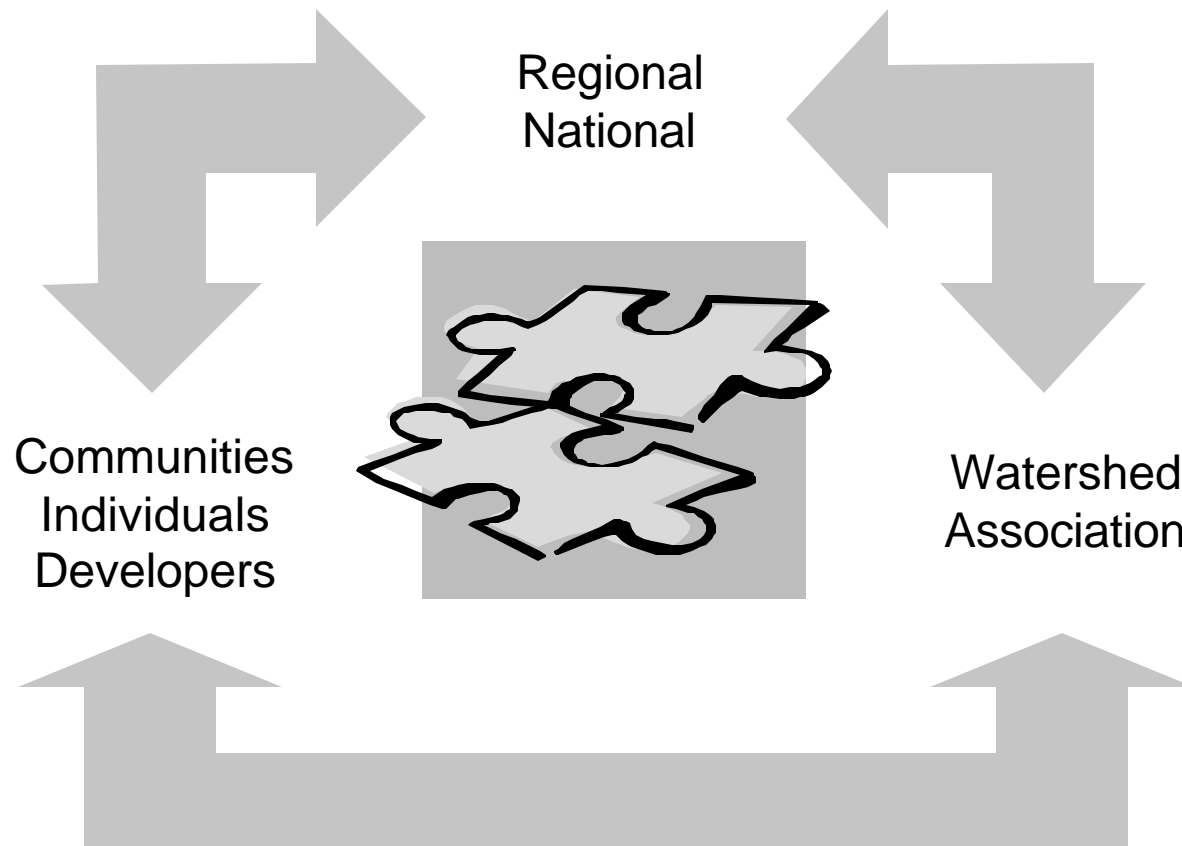
# Pieces of the Puzzle

- Watershed ? Political
- Property ownership ?  
drainage
- PARTNERSHIPS are  
KEY!



# It Depends...

## Partnerships Vary



# One Size Doesn't Fit All

- Watershed or regional approach
- Site Specific
- Basin Management
- Stream Corridor Management



# The 21<sup>st</sup> Century Is the “Era of Limits”

In Colorado, we are  
up against the limits  
of our water  
resources, both  
quality & quantity

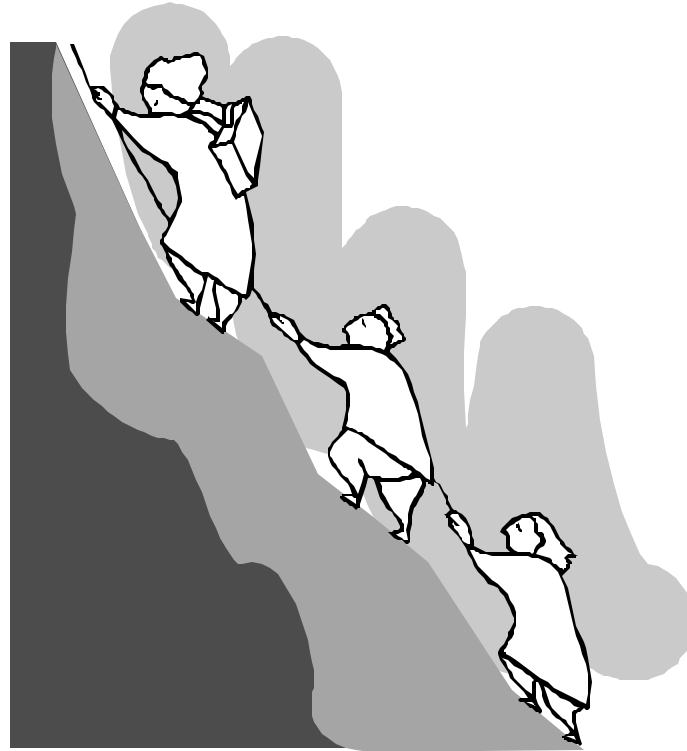
Colorado Supreme Court Justice  
Gregory Hobbs



# Challenges of Intermountain Water Supply:

- 1st Drought: Not enough water or “Classic Drought”
- 2nd Drought: Use more water than available
- 3rd Drought: Quality is not suitable for human use

# Upcoming Challenges



# Temperature Standards



# Water Supply Transmission



# Beetle Kill in Grand County



# State Stormwater Permit: The Next Cycle



[www.bouldercolorado.gov](http://www.bouldercolorado.gov) 2007

