



Beyond Brochures


Planning techniques for wildfire risk reduction



Molly Mowery
Wildfire Planning International

Rocky Mountain Land Use Institute – March 2015

Source: National Interagency Fire Center Photo Library

The bottom half of the slide features an aerial photograph of a residential development. The houses are built on a hillside, surrounded by dense evergreen forests. A winding road curves through the property, and a small pond is visible on the right side. The overall scene depicts a typical suburban or semi-rural landscape in a mountainous region.



What do you see?



Waldo Canyon Fire, Colorado Springs, CO 2012

Source: National Interagency Fire Center Photo Library

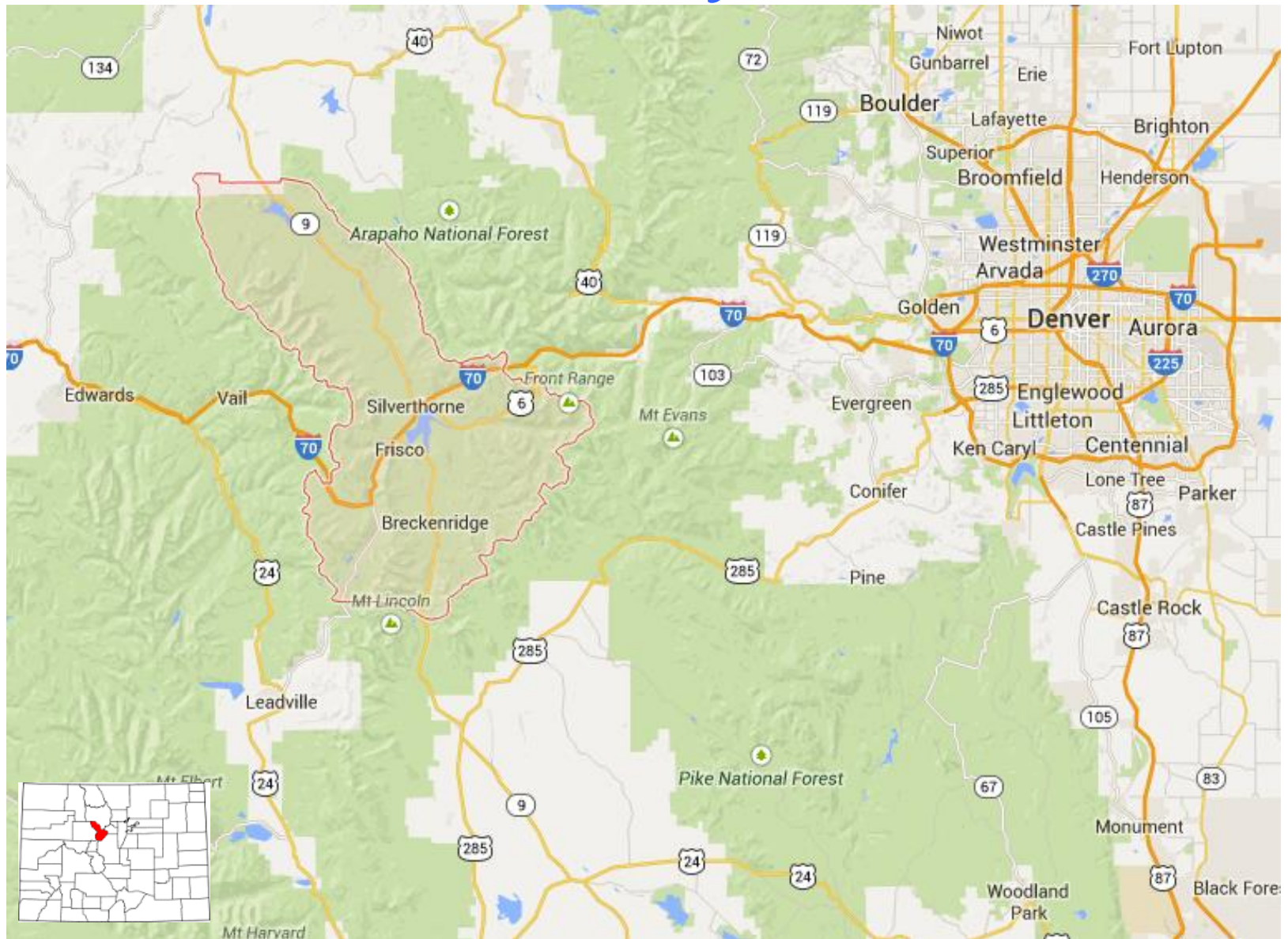
What do you see?





"The Scream" by Edvard Munch

Summit County, Colorado



Summit County, Colorado



Process

- Initial Pitch to Staff
- Blessing from BOCC & Wildfire Council
- Signed Memorandum of Understanding
- Field Tour
- Review of Key Documents
- Research and Recommendations
- Team Discussion
- Prioritization/ Next Steps



Key Documents Reviewed

- Countywide Comprehensive Plan
- Community Wildfire Protection Plan
- Land Use & Development Code
- Multi-Hazard Mitigation Plan
- Basin & Subbasin Master Plans



Opportunity

- Comprehensive Plan: Open Space Element
 - No reference to wildfire!





Waldo Canyon Fire, CO (2012)

Source: National Interagency Fire Center Photo Library/ Kari Greer

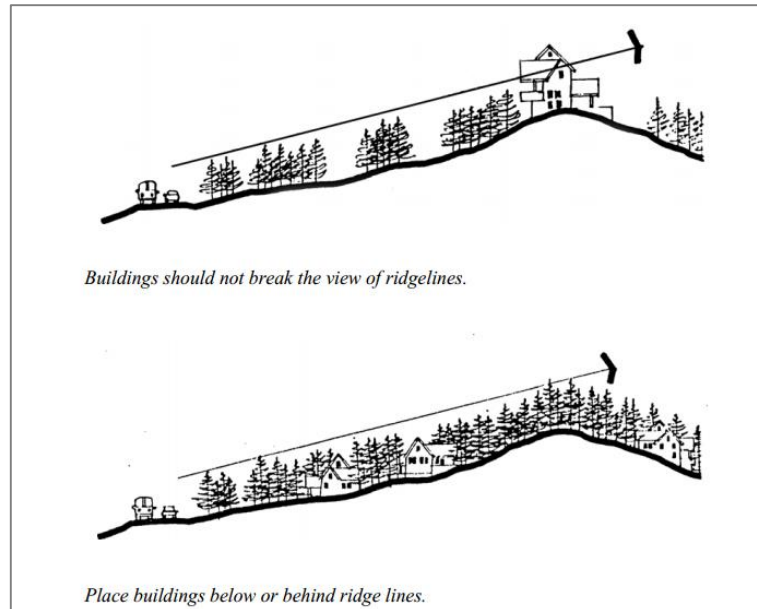
Recommendation

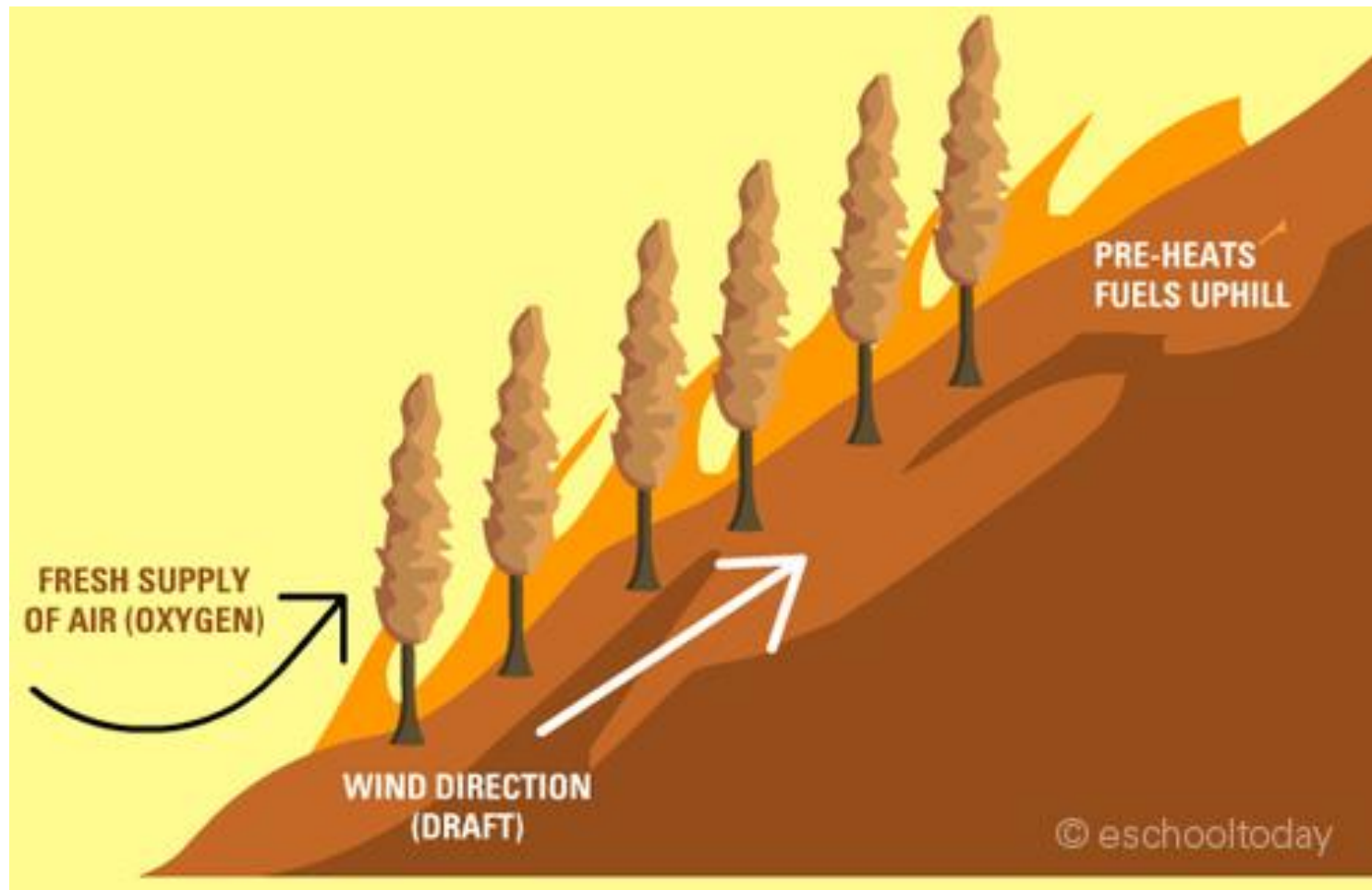
- In Open Space Element, ensure open space management is closely linked to wildfire/forest treatments
- Explore secondary benefits of open space management for wildfire suppression



Opportunity

- Wildfire mitigation efforts are at odds with design standards





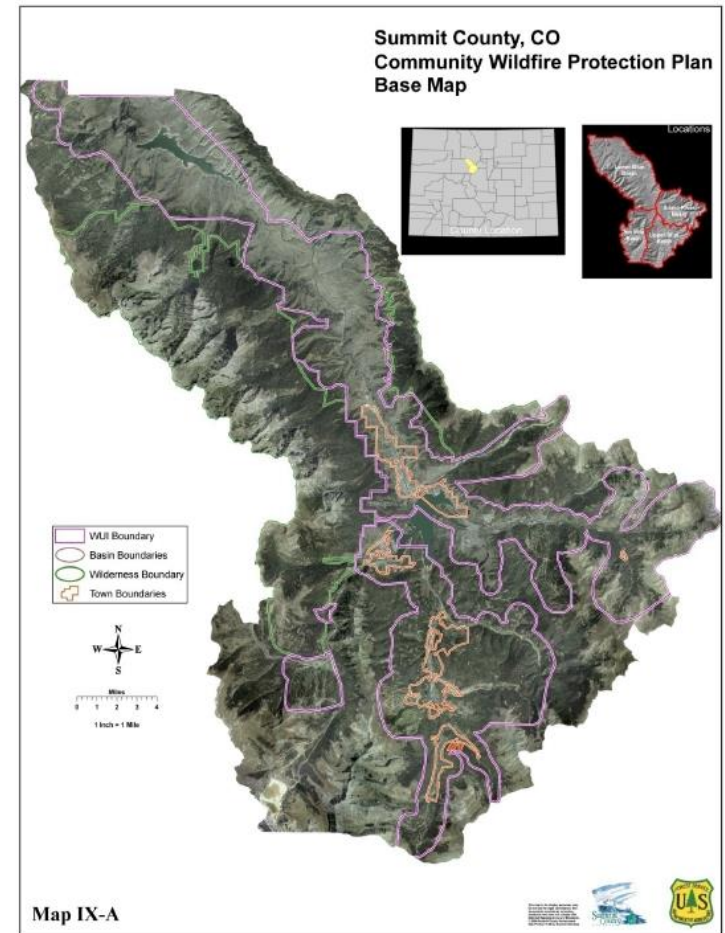
Recommendation

- Engage a wildfire professional in forest treatments, steep slope and other mitigation guidance
- Think creatively about visual screening



Opportunity

- Risk varies within the “wildland-urban interface”











Recommendation

- Clarify wildfire risk in the “WUI” as a set of conditions instead of a geographic location



Opportunity

- Land use planning is largely absent from the Community Wildfire Protection Plan





Recommendation

- Include Policy and Planning Actions in the Community Wildfire Protection Plan to guide future wildfire risk reduction efforts



Next Steps

- Share lessons learned
- Engage other communities in similar land use planning & wildfire risk reduction efforts



Thank You

Molly Mowery



Wildfire Planning International

molly@wildfireplanning.com

303-358-9589

