

THE TRUST *for* PUBLIC LAND

CONSERVING LAND FOR PEOPLE



Hillary Merritt, Project Manager

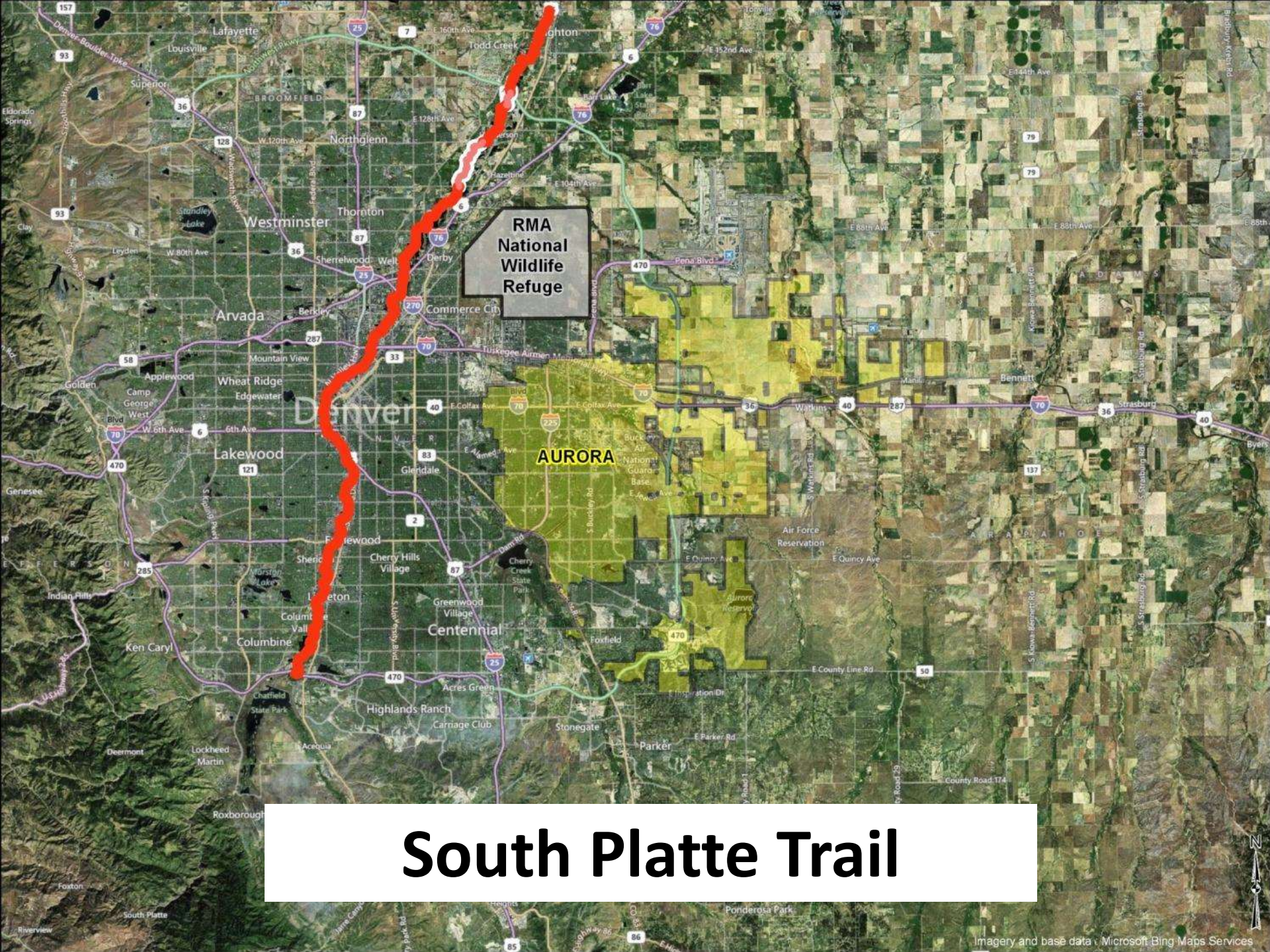
Triple Creek Greenway Corridor

Partnership with the City of Aurora

- Add 14 miles of interconnection greenway and trails between terminus of Sand Creek Regional Greenway and 30,000 acres of open space surrounding the Aurora Reservoir
- Phase I: \$9.2 million, 275 acres of open space
- Funding Partners:
 - Great Outdoors Colorado
 - Adams County
 - Arapahoe County
 - Rocky Mountain Arsenal Natural Resource Damage Funds (NGC)



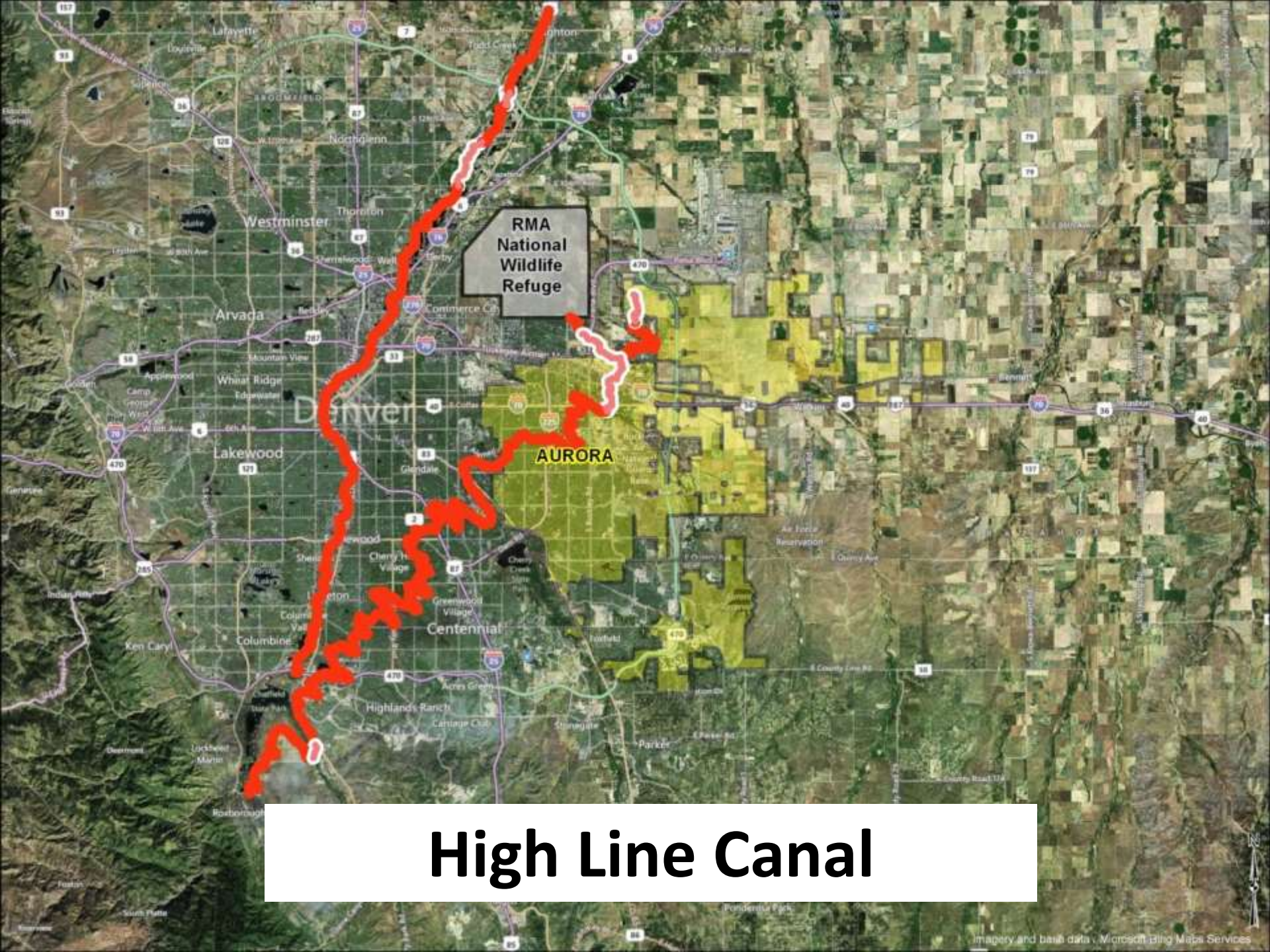
Imagery and base data © Microsoft Bing Maps Services



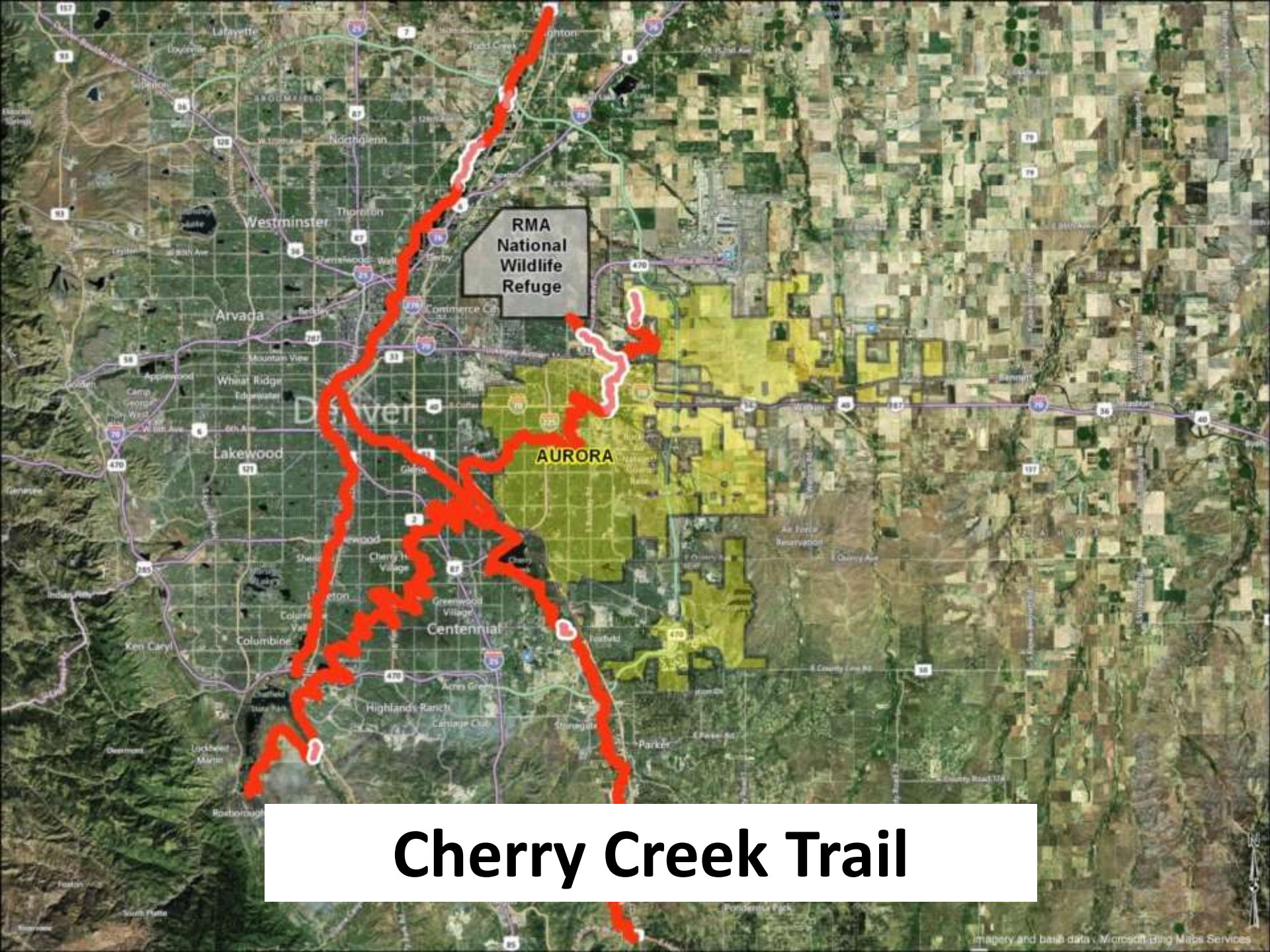
RMA
National
Wildlife
Refuge

AURORA

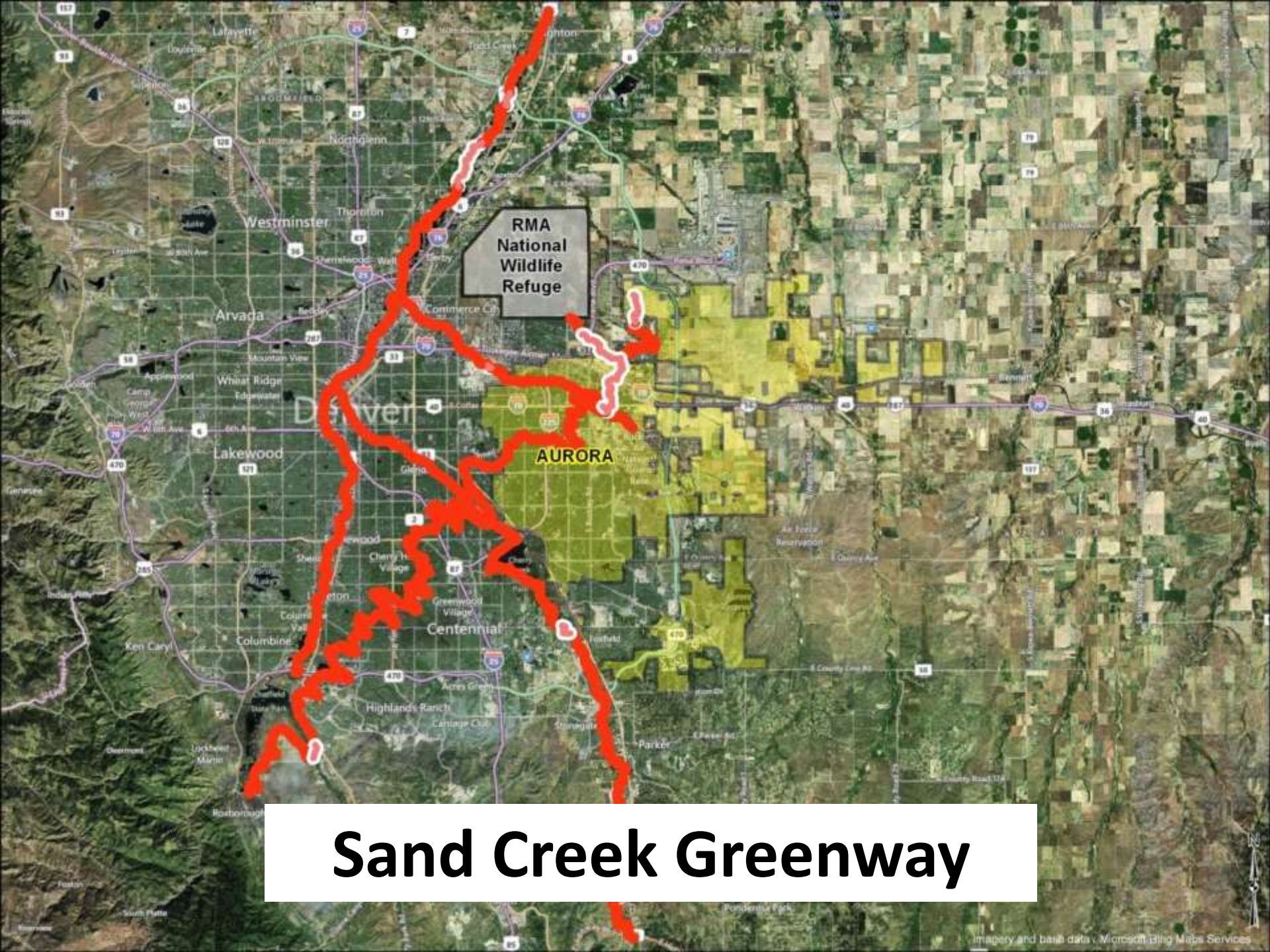
South Platte Trail



High Line Canal



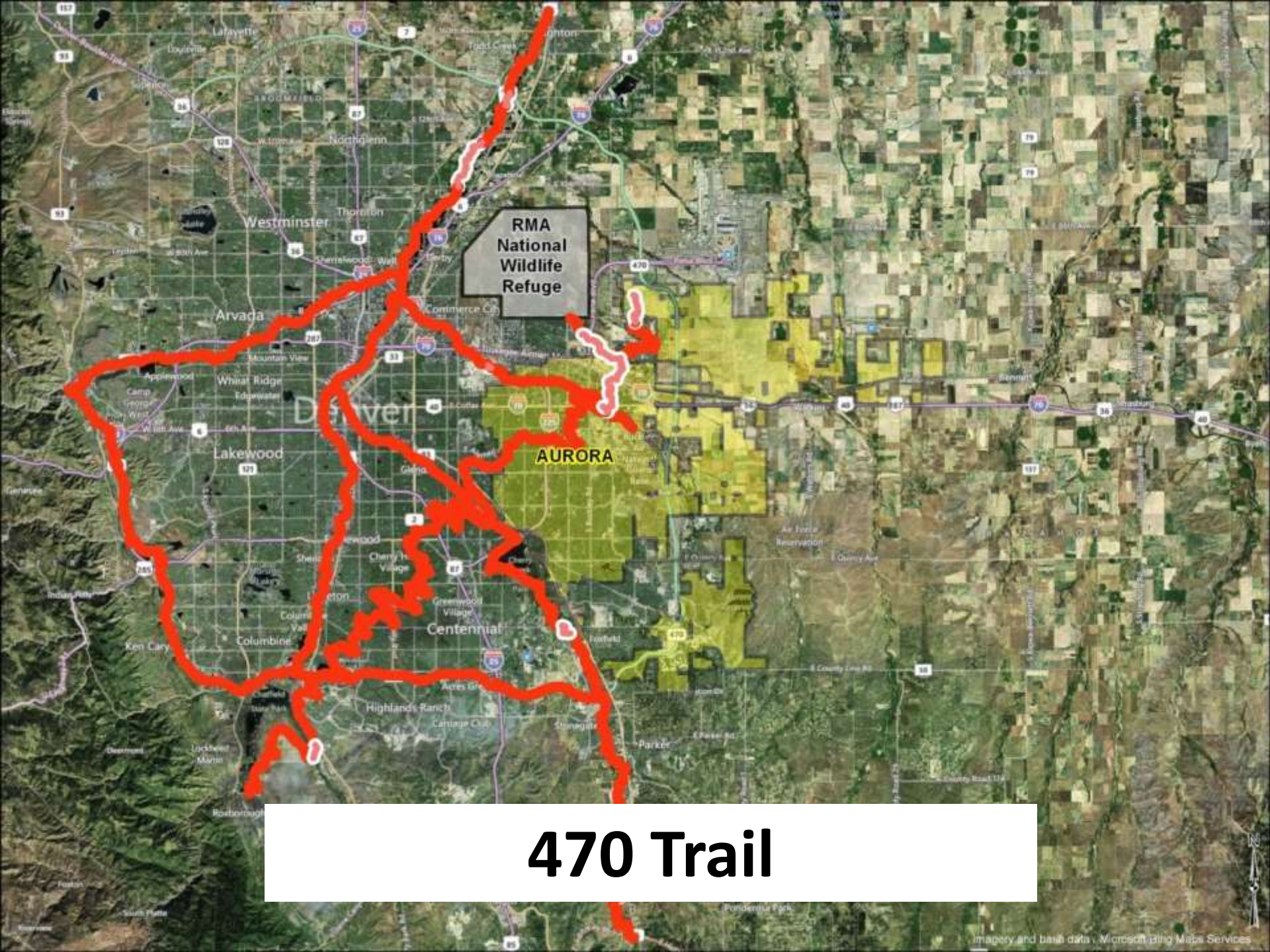
Cherry Creek Trail



RMA
National
Wildlife
Refuge

AURORA

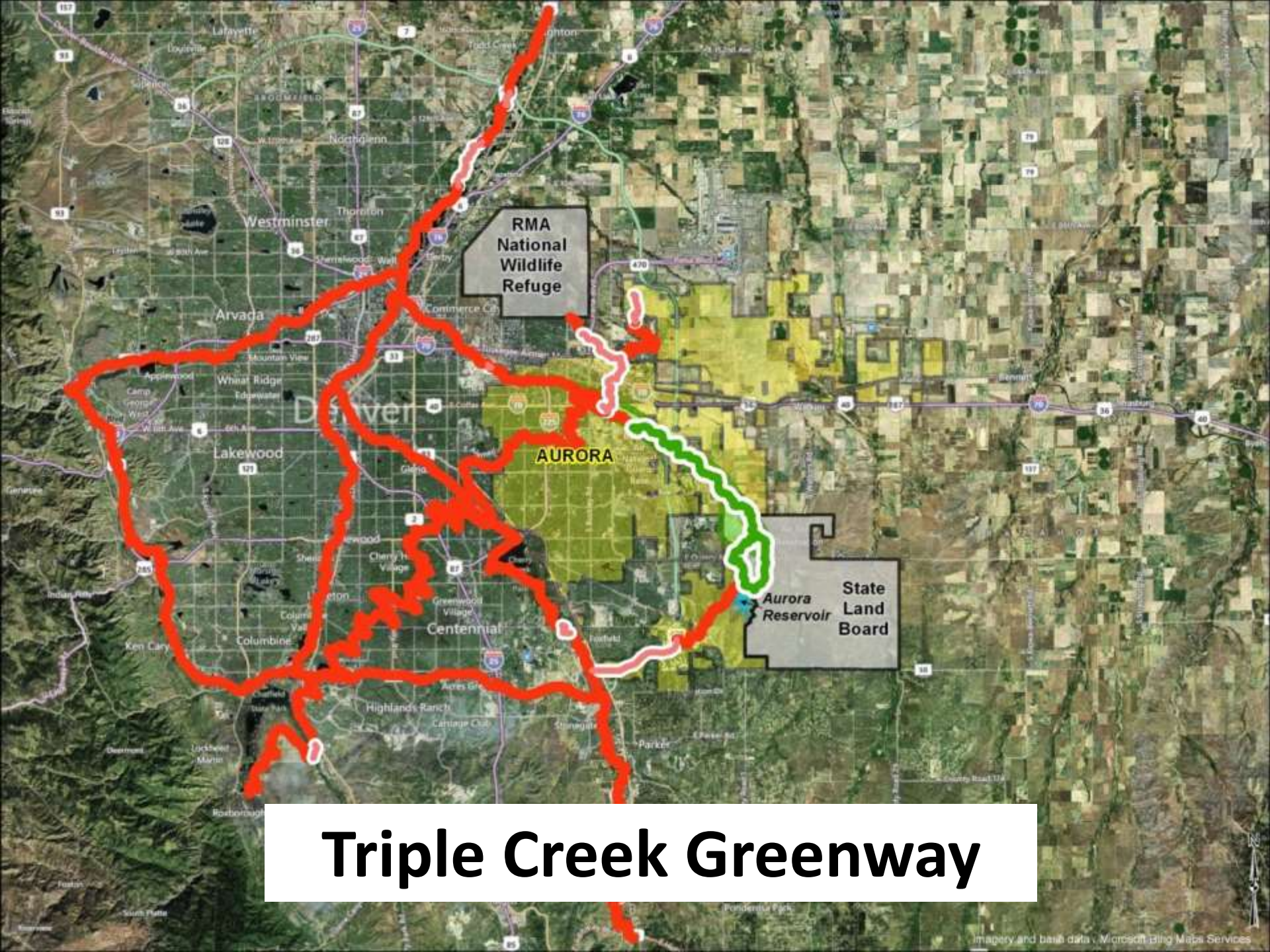
Sand Creek Greenway



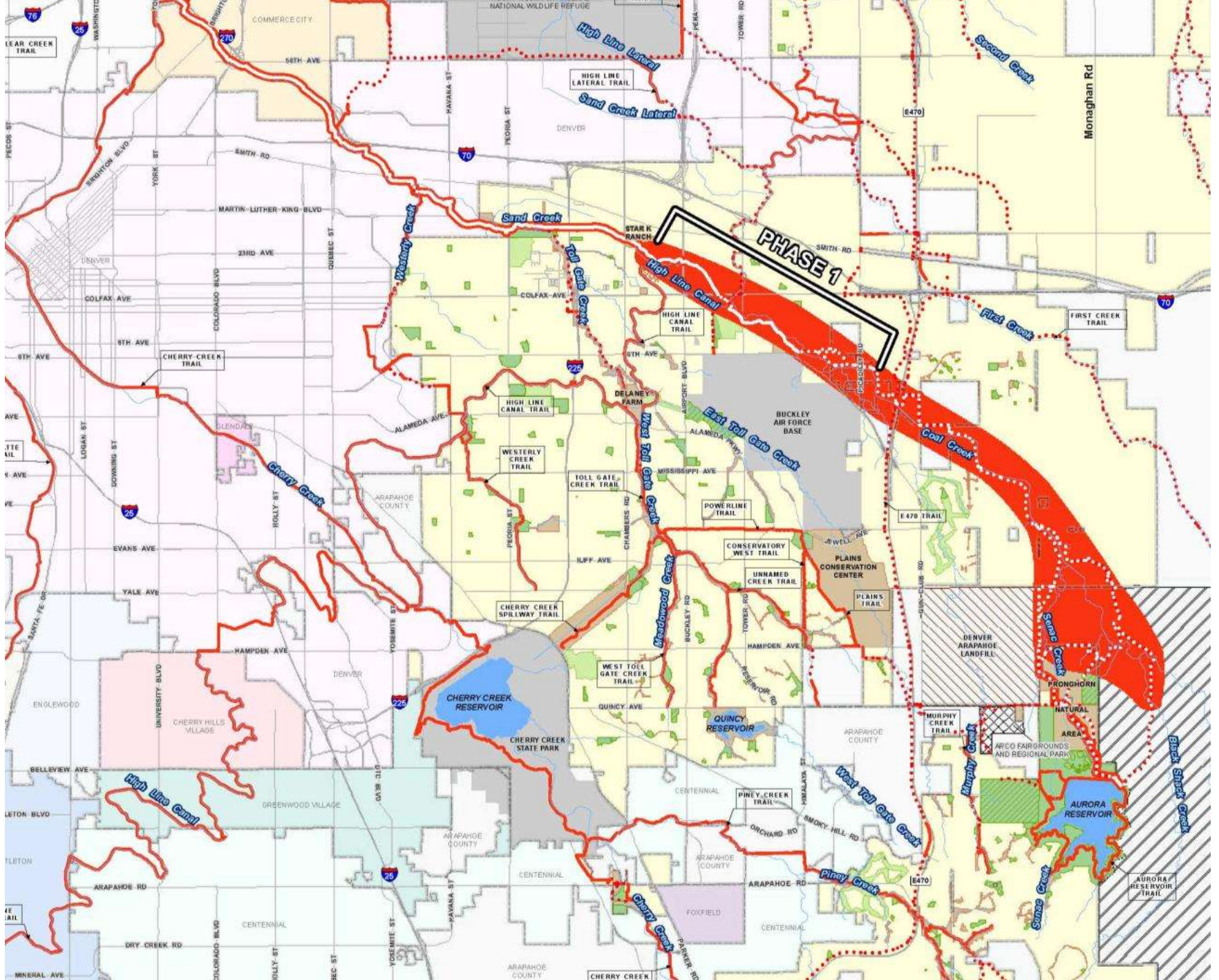
RMA
National
Wildlife
Refuge

AURORA

470 Trail



Triple Creek Greenway





TRIPLE CREEK GREENWAY CORRIDOR



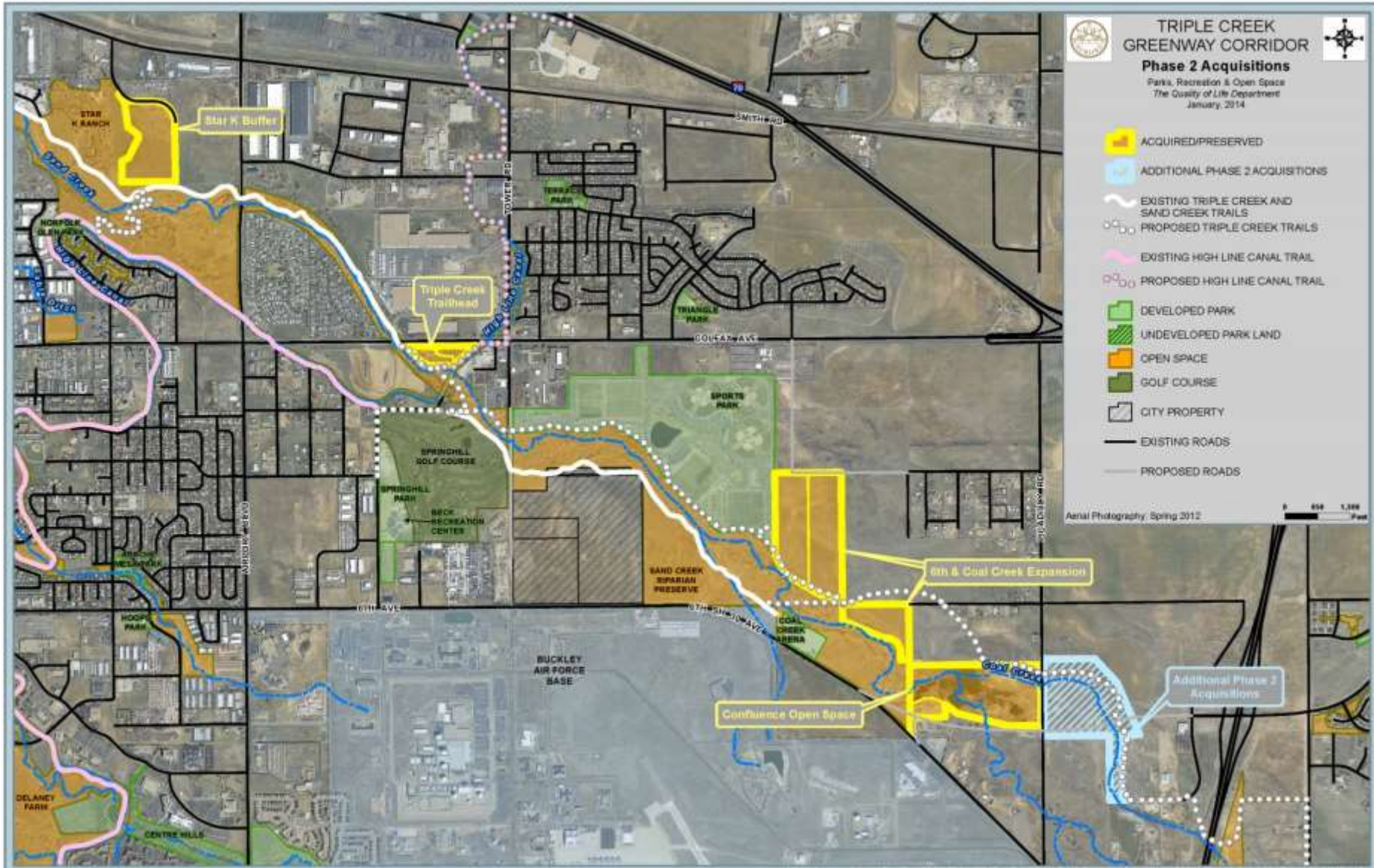
Phase 2 Acquisitions

Parks, Recreation & Open Space
The Quality of Life Department
January, 2014

- ACQUIRED/PRESERVED
- ADDITIONAL PHASE 2 ACQUISITIONS
- EXISTING TRIPLE CREEK AND SAND CREEK TRAILS
- PROPOSED TRIPLE CREEK TRAILS
- EXISTING HIGH LINE CANAL TRAIL
- PROPOSED HIGH LINE CANAL TRAIL
- DEVELOPED PARK
- UNDEVELOPED PARK LAND
- OPEN SPACE
- GOLF COURSE
- CITY PROPERTY
- EXISTING ROADS
- PROPOSED ROADS

Aerial Photography, Spring 2012

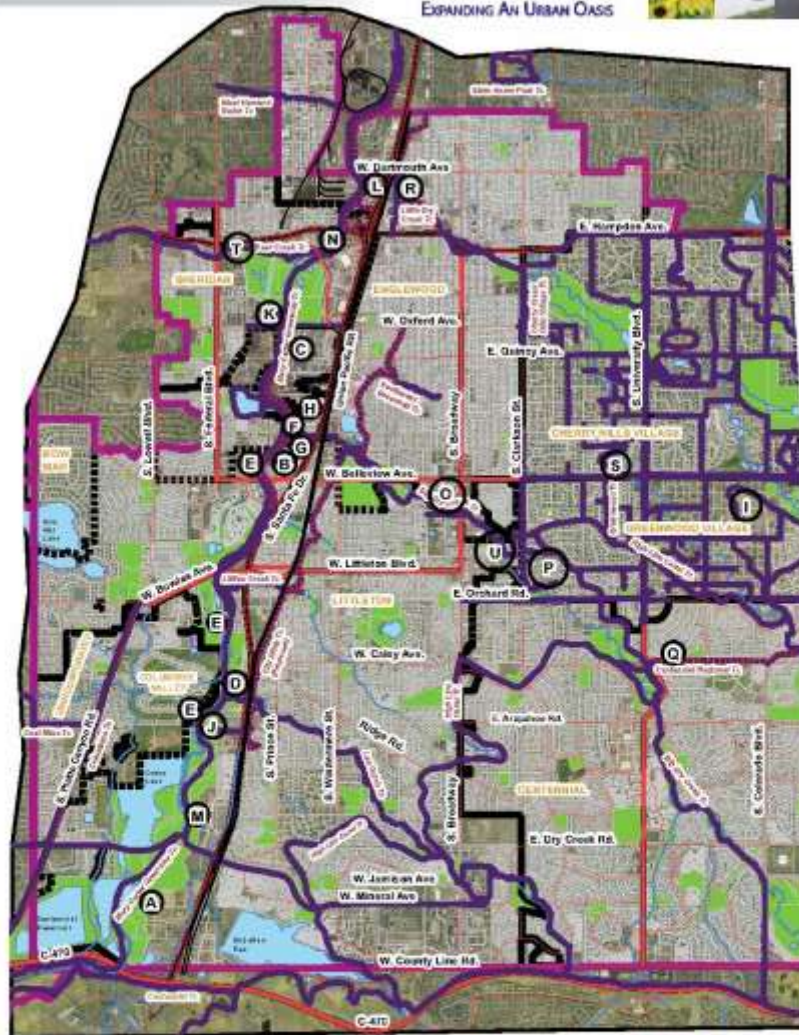
0 650 1,300
Feet



South Platte Greenway Legacy Project

- Preserve crucial open space, enhance connectivity, and conserve and restore habitat along the South Platte River and its tributaries.
- Total Project Cost: \$25 million
 - Land Acquisition
 - Brownfield restoration
 - Trail connections
 - Park and educational center development
- South Platte Working Group:
 - Arapahoe County
 - South Suburban Park and Recreation District
 - Englewood, Sheridan, Centennial, Littleton, Greenwood Village, Cherry Hills Village, Bowmar, Columbine Valley
 - The Trust for Public Land, South Suburban Park Foundation, Arapahoe County Open Space and Trails Advisory Board, South Metro Land Conservancy
 - Urban Drainage and Flood Control District, U.S. Environmental Protection Agency's Brownfield Redevelopment Program, and Colorado Division of Wildlife.

**SOUTH PLATTE GREENWAY
LEGACY PROJECT –
EXPANDING AN URBAN OASIS**



Legend
Existing Trail
Proposed Trail
Parks & Open Space
County Boundary

South Platte Greenway Legacy Projects

- A South Platte River/Exxon Open Space
- B South Platte River/Cobow Wetlands - completed
- C South Platte Riverfront
- D Lee Gulch - completed
- E Colorado Water Conservation Board Properties
- F Fire Training Center Trailhead
- G Murray Open Space - completed
- H Big Dry Creek Wyandol/Union Property
- I High Line Canal Conservation Easement - completed
- J Reynolds Landing - completed
- K Oxford Bike Path & Pedestrian Bridge - completed
- L Durango Bike Path & Pedestrian Bridge - completed
- M South Platte Park/Cannon Nature Center
- N South Platte Pedestrian Bridge - completed
- O Big Dry Creek Trail-Broadway Connection - completed
- P Big Dry Creek Trail-Clarkston to High Line - completed
- Q Big Dry Creek Trail-Central Line
- R Little Dry Creek Trail-Clausing Park to Dry Creek Plaza
- S Little Dry Creek Trail-Bellevue Underpass
- T Bear Creek Trail Bridge - completed
- U Big Dry Creek Open Space - completed

Lessons learned

- Shared vision
- Funding
- Implementation