

Rocky Mountain Land Use Institute

“What We’re Building Now
And Why Communities And
Planners Should Be
Happy About It!”

SheaHomes®
Caring since 1881

Shea Homes Colorado...

Building new homes in some
of the finest master-planned
communities in Colorado.



A SheaHomes Community



STEPPING
STONE™

for all of the rhythms of life™



A SheaHomes Community



A SheaHomes Community



A SheaHomes Community



ERIE, COLORADO



HIGHLANDS RANCH®

Why Communities & Planners Should Be Happy About It...



Sundial House at BackCountry



Recreation Center at Reunion



Resort-style Outdoor Pool at BackCountry



Neighborhood Parks at Reunion

SPACES at Reunion



Tresana



Stepping Stone



BackCountry



Not Just New Homes... New Home Brands.

- Shea recently introduced two new “brands” to the market...

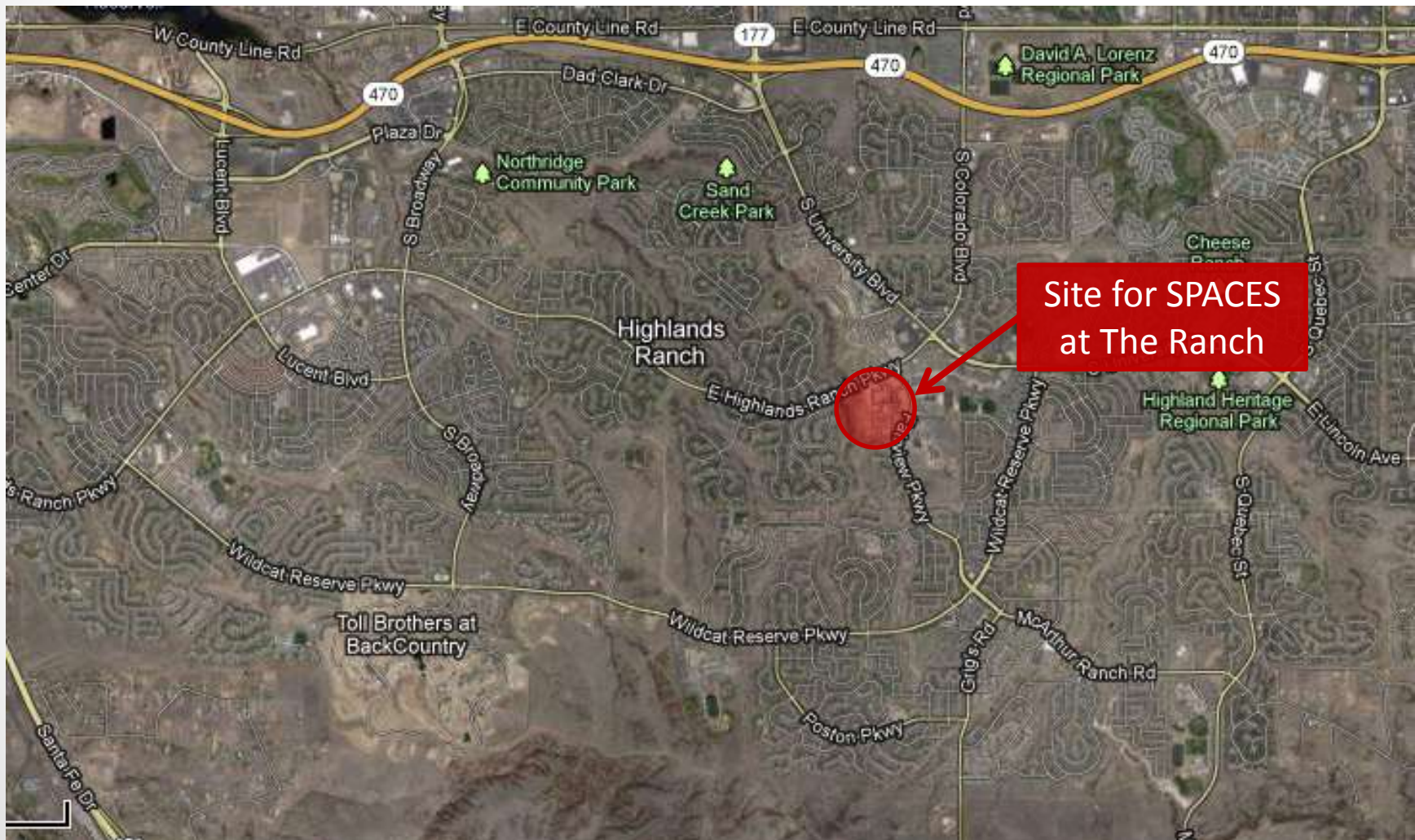




At The Ranch



SPACES at The Ranch Location



SPACES at The Ranch Site Map





SPACES at The Ranch Exteriors



SPACES at The Ranch Interiors



SPACES at The Ranch

Marketing Efforts




SPACES at The Ranch Microsite

Shea SPACES Colorado – Hipper. Happier. Happening. Affordable New Homes in Denver Colorado

https://www.sheaspacesco.com

Google


SPACES At The Ranch



Say "Hello Future" with SPACES at Highlands Ranch.

A new kind of house for a new kind of living. From the \$200's.

These are homes that are smart. They support your plugged-in lifestyle. They emphasize efficiency; like built-in flat screen TV's. They feel bigger by focusing on space you actually use. And, they are coming to Highlands Ranch.



**From the \$200's.
Seven Floorplan Designs.
A Modern Home.
A Real Yard.**

[Click here to learn more about the SPACES concept.](#)

Want to know more?

Great. Simply fill-out the information below and we will keep you posted. From exterior designs, to floor plans, to neighborhood amenities, you will see for yourself how this is a new kind of house and a new kind of living.

First Name*

Last Name*

Email*

Phone

Address*

City*

COLORADO

Zip Code*

CLICK TO SUBMIT

* = Required Fields

SPACES at The Ranch

Extraordinary Results

- 836 people on the SPACES at The Ranch Interest List prior to presales opening
- 35 overnight campers (in the worst real estate market since the great depression)
- 60 interested buyers added to the Priority List at the pre-sales opening with a \$500 deposit

Sales:

- 2010: 43
- 2011: 81
- 2012: 116

shea
SPACES
Hellofuture.



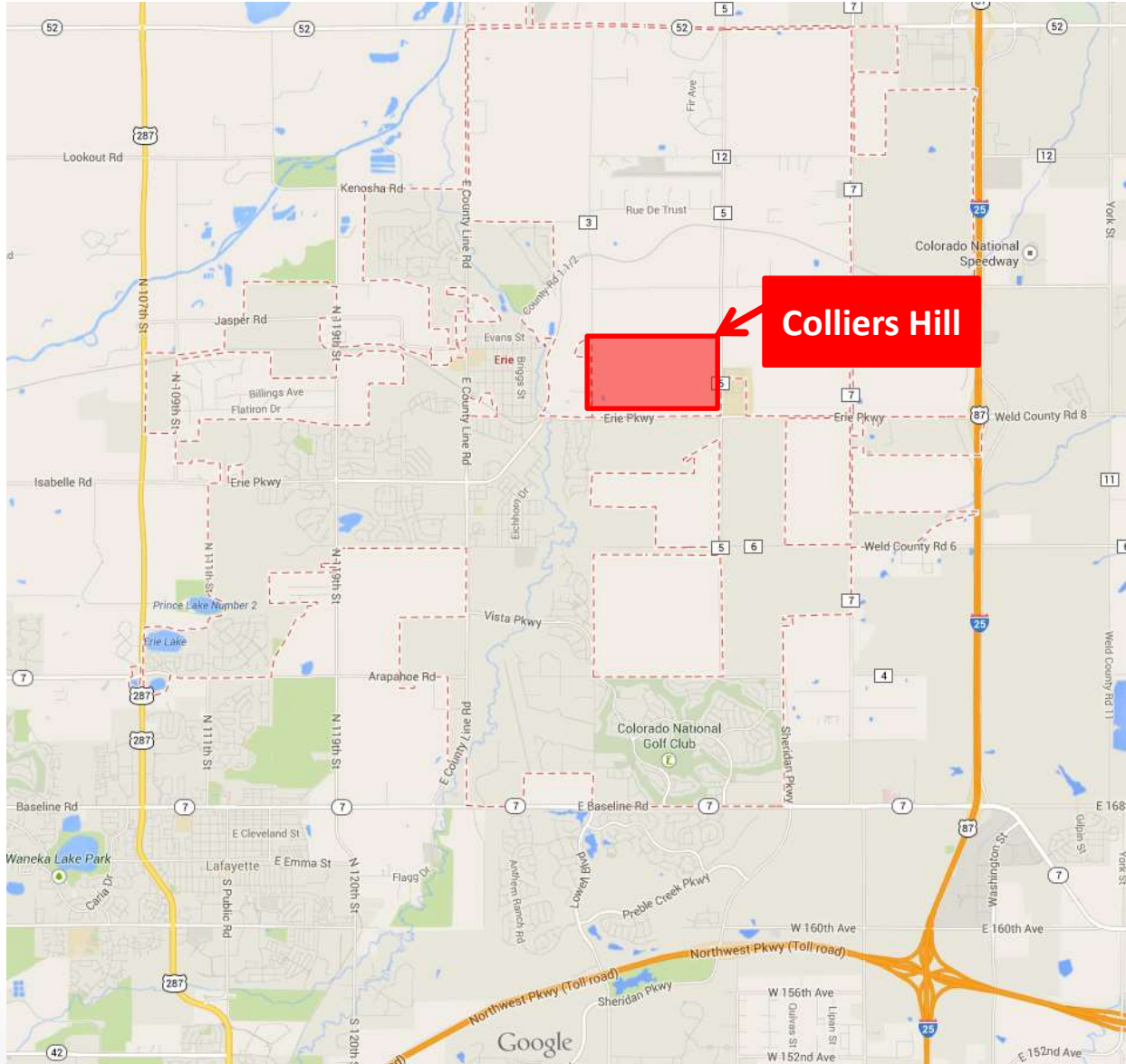


L I F E O P E N S U P .



AN ENTIRELY NEW APPROACH TO HOME DESIGN | INNOVATION BY **SheaHomes®**

Colliers Hill Location



Shea3D Exterior Elevations



Plan 352B

Plan 402C



Shea3D Brochure



Imagine
how you live.

Now, imagine a home
designed around you.



LIFE OPENS UP.™

YourPlan: ENTERTAINMENT

Does your plan call for open space to gather with family and friends to do whatever? Then this plan is all about you. The kitchen, dining and living room form one continuous living area that gives you the perfect home for all those formal and informal events that make life's most meaningful memories.

YourPlan: KITCHEN

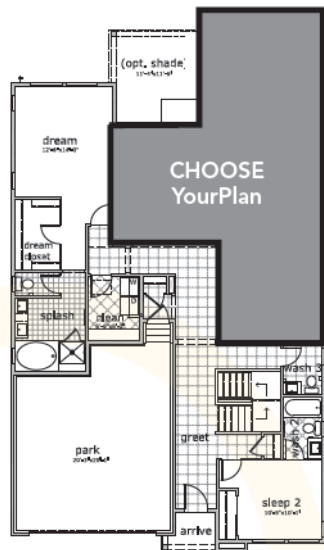
You know the kitchen is everyone's favorite gathering place. You also know there is nothing like feeling like the master chef in your own expansive and centralized kitchen. YourPlan Kitchen lets you showcase your culinary skills in style and enjoy plenty of elbow room to accommodate your growing family or your food enthusiast friends.

YourPlan: OUTDOOR

Step out of your kitchen with your morning coffee and enjoy the great out-of-doors. You seek every opportunity to turn "indoor-outdoor living" into a personal daily routine. Whether you have a green thumb, consider yourself a grill master, or perhaps you simply enjoy relaxing in the shade... your outdoor plan is about having the best of both worlds.

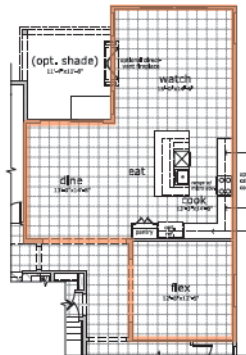
Shea3D – Floorplans

Plan 401



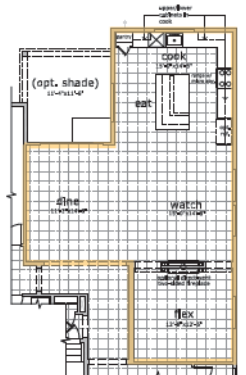
MAIN FLOOR

Main Floor	1,925 sq. ft.
Total Std. Floor Area	1,925 sq. ft.
Unfinished Basement	1,337 sq. ft.
Crawl Space	440 sq. ft.
Park	471 sq. ft.



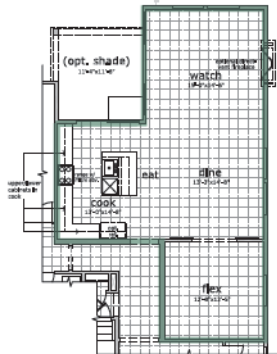
YourPlan: Entertainment

For you, open space is key. You'll love the continuous living area that invites any kind of activity for any number of your best friends.



YourPlan: Kitchen

You know your kitchen is the center of activity. You'll never have to choose between watching the big game or creating your latest culinary masterpiece.



YourPlan: Outdoor

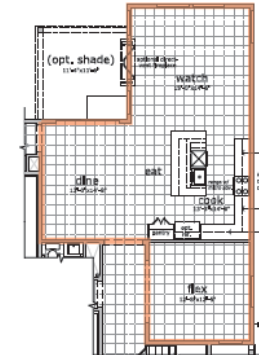
You want the best of both worlds. You'll enjoy Colorado's great out-of-doors as one of your home's greatest features... offering 300 days of sunshine a year.

Plan 402



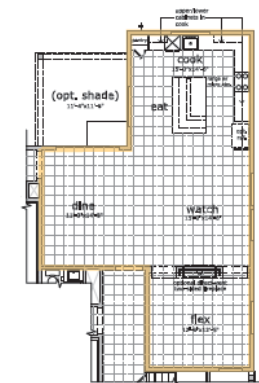
MAIN FLOOR

Main Floor	1,241 sq. ft.
Second Floor	1,273 sq. ft.
Total Std. Floor Area	2,514 sq. ft.
Unfinished Basement	1,050 sq. ft.
Park	636 sq. ft.



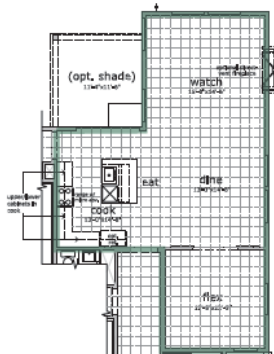
YourPlan: Entertainment

For you, open space is key. You'll love the continuous living area that invites any kind of activity for any number of your best friends.



YourPlan: Kitchen


You know your kitchen is the center of activity. You'll never have to choose between watching the big game or creating your latest culinary masterpiece.




YourPlan: Outdoor

You want the best of both worlds. You'll enjoy Colorado's great out-of-doors as one of your home's greatest features... offering 300 days of sunshine a year.

Shea3D - Microsite




[Start Dreaming... sign up for Shea3D™ News](#) | [Shea3D™ at Colliers Hill in Erie, CO](#) | [About Shea Homes](#) | [Home](#)




YourPlans™ are coming together at Colliers Hill in Erie...

let's begin.

[CLICK HERE TO GO TO SITE](#)



[Contact Us](#) | [Privacy Policy](#) | Prices, terms and availability subject to change without notice. Please see Shea Homes Community Representative for complete details. © 2014 Shea Homes 



[Start Dreaming... sign up for Shea3D™ News](#)

[Shea3D™ at Colliers Hill in Erie, CO](#)

[About Shea Homes](#)

[Home](#)

Dream

We're ready to turn your dreams into reality. Just for fun, start thinking about what's your idea of a great time...

- ☐ Prepare a romantic dinner for two
or
- ☐ fire up the grill for the gang?

- ☐ Watch a movie
or
- ☐ play bocce in your backyard?

- ☐ Party with friends
or
- ☐ perfect your favorite recipe?

- ☐ Relax in the shade
or
- ☐ host your family's reunion?

- ☐ Have the neighbor kids over
or
- ☐ grow your green thumb?

Sign up to receive Shea3D™ News:

First Name *

Last Name *

Email Address *

Zip code *

Are you a REALTOR?

- ☐ Yes ☐ No

Ideally, when would you like to move-in to your new Shea3D™ home?

- ☐ As soon as possible
- ☐ Within the next year
- ☐ In the next year or two

SUBMIT

☒ Yes, I'd like to receive Shea3D News emails



Shea3D Marketing: Signage



Shea3D Marketing: Print Ads



Shea3D Marketing: Outdoor Ads



Extraordinary Results?



L I F E O P E N S U P .

See Shea3D™
In Action



Thank You!

SheaHomes®
Caring since 1881