

YELLOWSTONE BUSINESS PARTNERSHIP

Sustainable Communities: *A Regional Approach for the Greater Yellowstone Ecosystem*

Rocky Mountain Land Use Institute
March 4th, 2011

Heather Higinbotham, Sustainability Programs Manager,
Yellowstone Business Partnership, www.yellowstonebusiness.org

Brit Fontenot, Assistant to City Manager/Economic
Development Liaison, City of Bozeman, MT

Hannah Sanger, Environmental Educator, City of Pocatello, ID



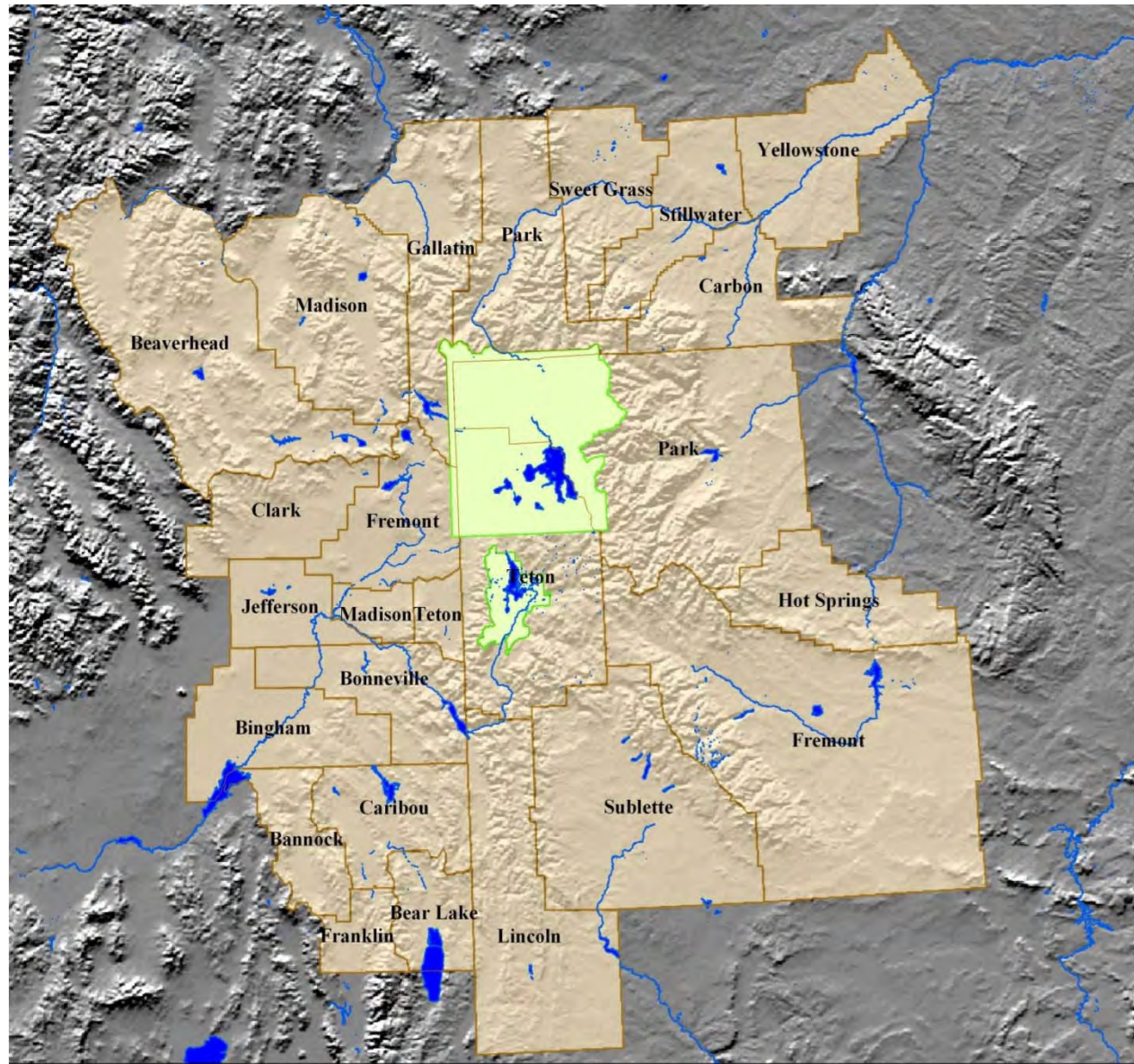
The Yellowstone-Teton Region: **A Vast Geography with Few People**

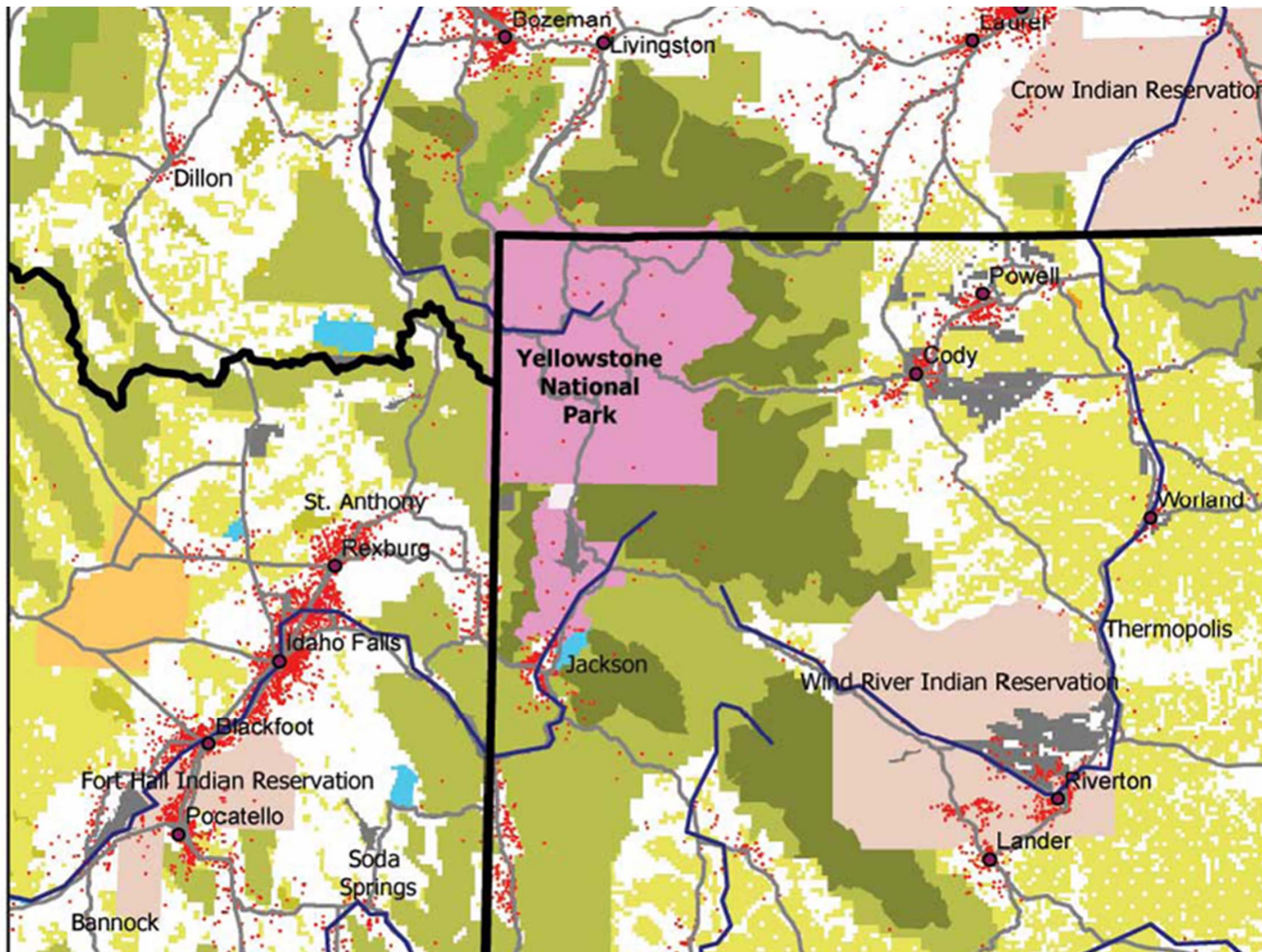


- Includes 27 counties in Idaho, Montana and Wyoming that surround and identify with Yellowstone and Grand Teton national parks – a total of 35-40 million acres
- Over 750,000 total population with only four counties in excess of 50,000 people (metro areas)

Y
B
P

R
E
G
I
O
N





Yellowstone Business Partnership

Why Was It Created?

- Businesses needed to be better informed and empowered in regional decision making
- Desired more collaborative, less adversarial approaches across our multiple jurisdictions

Preserve health of the regional environment
Promote sustainable, prosperous economies
Maintain the quality of life for our communities

YBP Seeks to Resolve the Region's Most Complex Challenges

Promoting Green Building and Development

- *Greater Yellowstone Framework for Sustainable Development* – Ecosystem-based rating system specific to Yellowstone-Teton

Encouraging Responsible Business Practices

- *UnCommon Sense* – Two-year leadership training program

Enhancing Park Accessibility and Tri-State Connectivity

- *Linx Regional Transportation Cooperative* – Link existing public and private providers

Supporting Four Season Economies for Gateway Communities

- *Turning On the Off-Season* – Reducing our economic fluctuations



Greater Yellowstone Framework for Sustainable Development

- **2005:** Assessed regional attitudes on growth & change
- **2006-07:** Created regionally-relevant rating system for encouraging green building and sustainable land use
- **2007:** Unveiled Framework; secured \$195K to implement
- **2008:** Selected 11 pilots; published Reference Guide
- **2009-current:** Pilots test GY-Framework on the ground



GY-Framework Rating System

100 Points; 7 Prerequisites; 57 Credits

Project Planning and Investments – 6 pts

Land Use and Conservation – 13 pts

Biodiversity - 12 pts

Cultural and Historical Values - 9 pts

Recreation Resources- 10 pts

Built Environment – 15 pts

Public Service and Infrastructure 15 pts

Transportation and Connectivity – 10 pts

Community Vitality – 9 pts

Special Credit Opportunities – 12 pts (not incl.)



GY-Framework Registered Pilots

**Beartooth Nature Center
in Red Lodge, MT**

City of Pocatello, ID

Dornix Park in Big Timber, MT

Grand Targhee Resort in Alta WY

**Harriman State Park in Island
Park, ID**

**Lake and Tower Remodel
Projects in Yellowstone
National Park, WY**

Livingston High School, MT

**Mountain Legends Ranch in
Driggs, ID**

**Mountainside Village in Victor,
ID**

**Pine Glades Townhomes in
Jackson, WY**

**Red Lodge High School in
Red Lodge, MT**

**Story Mill Neighborhood in
Bozeman, MT**

**Teton Meadows Ranch in
Jackson, WY**

GY-Framework for Local Governments

Overarching themes for local government participants:

- Remove barriers to achieving GYF credit strategies (enable)
- Implement the GYF credit strategies on all local government funded projects (lead by example)
- Provide incentives (and/or disincentives) to encourage the sustainable activity described in the GYF credit (carrot/stick)
- Adopt the GYF credit strategy as policy for all projects within their jurisdiction, public and private (enforce)

Linx: A Cooperative Approach



2009 Feasibility Study Process

- 50+ volunteer steering committee from across region
- Volunteers represented diversity of the region
- Volunteers worked in 6 teams to provide input to the feasibility study: private and public providers, government agency coordination, human service providers, multi-modal, marketing, and recreation and tourism

Feasibility Study Findings

- Sufficient demand for services the co-op could offer – unmet rider demand and mobility management for providers
- Gaps analyzed - temporal and physical
- Technology applications must be developed to manage systems
- Recommendation to form blended cooperative

Co-op Formation and Goals

- Incorporated on 1/24/2010
 - File paperwork for business in all three states
 - Adopt bylaws
- Recruit pilot phase board
- Recruit provider-members
 - Build out system and begin gap filling
- Launch limited pilot system by December 2010
 - Develop infrastructure for trip-planning and ticket purchasing

Members



TRPTA

*Salt Lake
Express*

WSIL

wyoming *services* for independent living



GRAND TARGHEE RESORT



GRAND TETON
LODGE COMPANY

Grand Teton National Park



Partners for Prosperity
NEW BEGINNINGS FOR EASTERN IDAHO

RIMROCK STAGES



AURA SOMA LAVA



Connecting People and Places






Mobile office? Movie theater? Nap spot?
It's up to you when you ride LinX.

Quick Trip Planner

From

To

05/24/2010 08:00 AM 

[Find My Trip](#)

[Need Help?](#)

[Traveling with Children?](#)



Connecting People and Places in Idaho, Montana and Wyoming



Popular Destinations

From Jackson Hole to West Yellowstone to the local zoo, LinX can get you there - while you enjoy the ride and let someone else worry about the driving.



Sweet Deals

Ride LinX to Yellowstone Business Partnership's annual conference (May 24-26). Busses departing from Idaho Falls, Billings and Bozmean.



Cool Things To Do

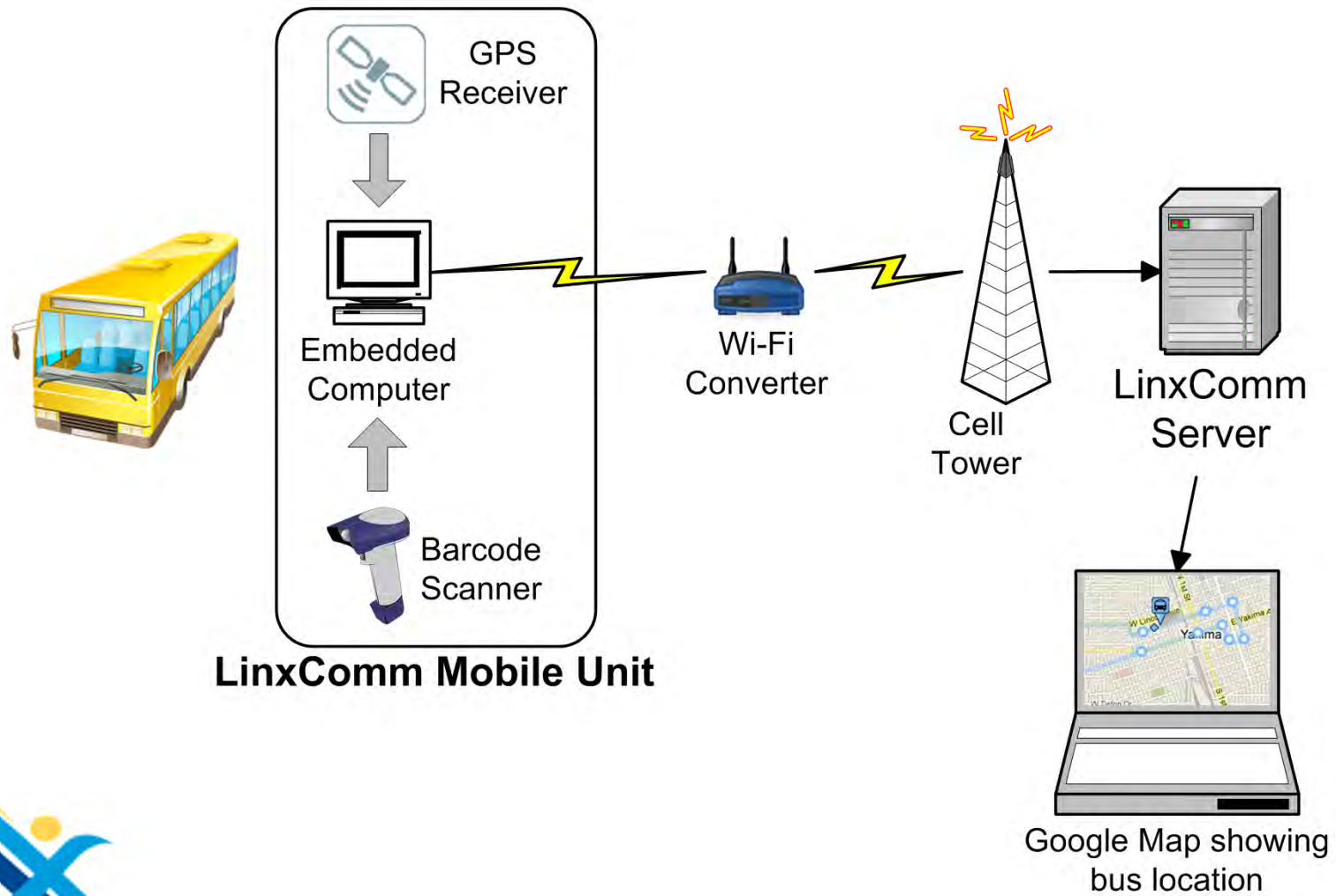
Soak in natural hot pools, attend a music festival or ski bottomless powder - LinX is the stress-free way to discover the region.



My LinX

Retrieve your itinerary, keep a list of places to go and things to do...

LinxComm



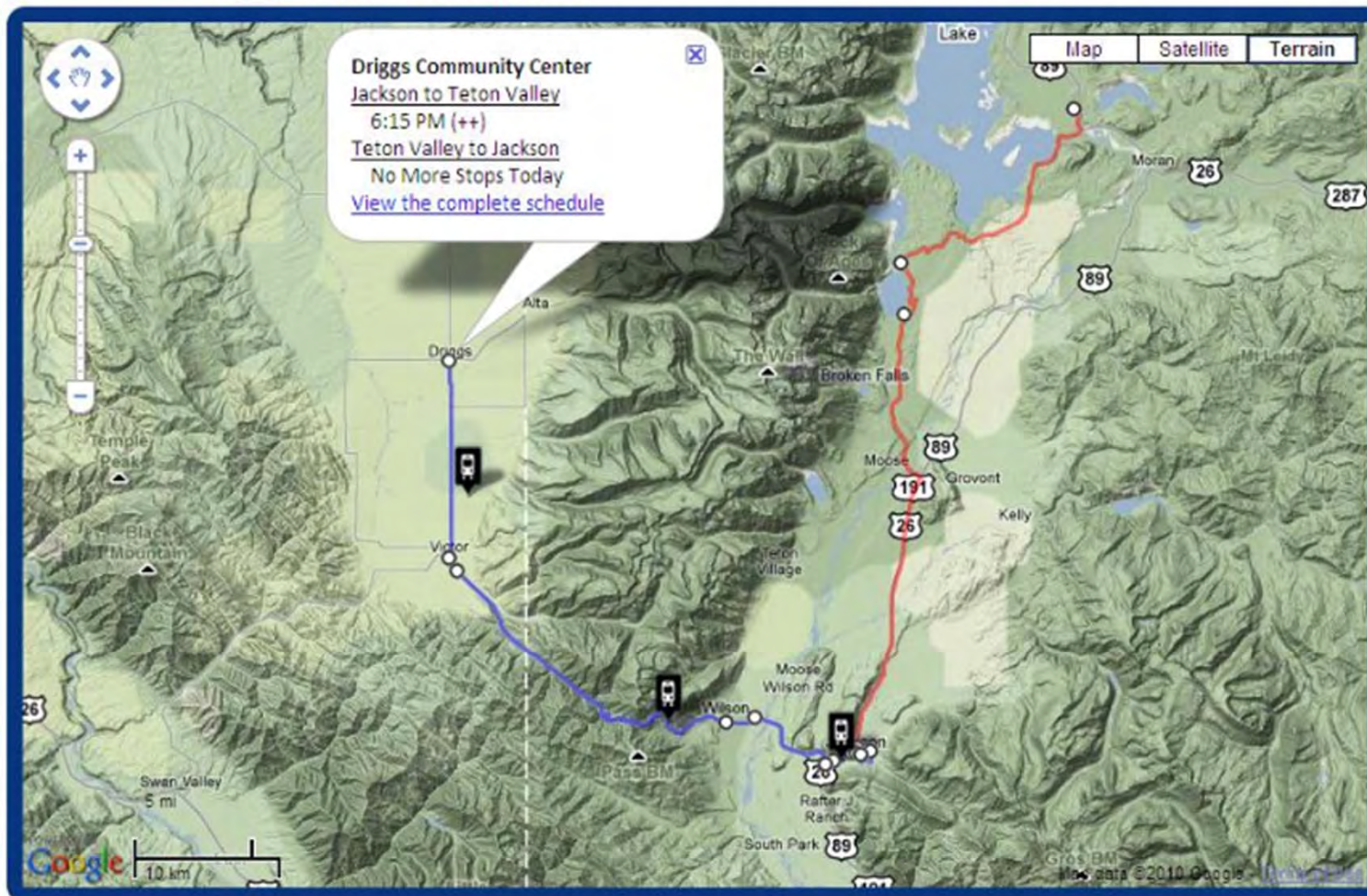
LinxComm Goes Live



- ☐ Jackson Town Shuttle
- ☐ Jackson <=> Teton Village
- ☒ Jackson <=> Teton Valley
- ☐ Jackson <=> Star Valley
- ☒ Jackson <=> Jackson Lake Ldg



Where's my bus?



Name: Teton Pass Bus (MCI)

Latitude: 43.4728

Longitude: -110.7765

Updated: 07:51:27 AM MDT -- Mon, Jul 26, 2010

Speed: 0.16 mph

Heading: SSE

Status: OK

National Park Service Engaged

- GTLC operates Grand Teton NP shuttle
 - Both public and employee shuttles from Colter Bay to Jackson
 - LinxComm demonstration
- YBP consulted re: next YNP concession contract
 - NPS consultant asks re: Linx connectivity to region
 - One hour discussion regarding in-park shuttle services, challenges
 - Directed consultant to YNP scenarios outlined in Feasibility Study
- Pilot shuttle system to operate in YNP and GTNP summer 2011
 - Public and employee shuttles to operate from each major gate
- Winter Use EIS Alternative #4 reflects YBP input
 - Mixed Use alternative to evaluate plowing and bus transportation

Pilot Year Two: 2011

- Demand response
- Reservation system that will allow riders to make a reservation on all Linx providers and print one ticket
- Time period passes (week, month, etc.)
- Display itinerary on Google Maps
- Track bus in real time on Google Maps
- Choose trip option from Google Maps
- Plan a trip around Popular Destinations, Sweet Deals etc.
- On-board ticket validation

HUD/EPA/DOT Sustainable Communities Regional Planning Grants

- GY-Framework already incorporates all six Livability Principles
- Proposal Summary
 - Greater Yellowstone Consortium in place
 - GY-Framework as evolving Regional Plan for Sustainable Development
 - Pilot cities and counties for local government certification
 - Model code template
 - Housing Assessments for 27 counties
 - Workforce Assessment, Gallatin College
 - Bozeman Downtown Street Transformation
 - Housing Concept Plan for Billings
 - Portneuf River Restoration
 - Regional Recycling Infrastructure
 - Transportation Impact Analysis

City of Pocatello & YBP

Why Be a Pilot City?

- We are already doing a lot of the YBP Framework's requirements..
- Our existing 'to do' list includes many of the credits in the Framework.
- It's good for business recruitment



A Sustainable City: Pocatello, Idaho

City of Pocatello: Pilot City

Participation is voluntary. **We do not have to certify.**

✓ **Framework Assessment**

- What credits is the City already achieving?
- What credits do we think the City can (and should achieve)?
- What will it take to achieve those credits?

✓ **Generate work plan for selected credits**

☐ **Community Engagement:**

- Create Framework Committee

Framework Overview

- **Project Planning and Investments**
- **Land Use & Conservation**
- **Biodiversity**
- **Cultural and Historical Values**
- **Recreation Resources**
- **Built Environment**
- **Public Service and Infrastructure**
- **Transportation and Connectivity**
- **Community Vitality**

YBP Scorecard



GY Framework 1.0

GREATER YELLOWSTONE FRAMEWORK FOR SUSTAINABLE DEVELOPMENT SCORECARD

			Project Planning and Investments	6 Possible Points
Y			Prereq 1 Asset Inventory and Spirit of Place	Required
			Credit 1 Region Based Accredited Professional	1
			Credit 2 Qualified Professional - Cultural Resources	1
			Credit 3 Local/Regional Business Support	1
			Credit 4 Sustainability Investments	1 to 2
			Credit 5 Continuous Improvement (Plan for Ongoing Compliance)	1
			Land Use and Conservation	13 Possible Points
Yes	?	No	Credit 1 Sensitive Resources	2
			Credit 2 Slopes	1
			Credit 3.1 Views: Visual Quality	1
			Credit 3.2 Views: Night Sky	1
			Credit 4 Defensible Space	1
			Credit 5 Density and Open Space	2 to 4
			Credit 6 Brownfield Restoration	1
			Credit 7 Land Conservation	1 to 2
			Biodiversity	12 Possible Points
Y			Prereq 1 Coexisting with Wildlife	Required
			Credit 1 Preservation of Aquatic Resources	1 to 3
			Credit 2 Surface and Ground Water Conservation	1 to 3
			Credit 3 Habitat Conservation and Connectivity	1 to 2
			Credit 4 Vegetative Management	1 to 2
			Credit 5 Habitat Restoration and Enhancement	1
			Credit 6 Fence Siting and Materials	1
			Credit 7 Domestic Animal Management	1
			Cultural and Historical Values	3 Possible Points
			Credit 1 Cultural Resource Conservation and Management	1 to 2
			Credit 2 Conservation of Cultural/Historic Structures	1 to 3
			Credit 3 Historically Appropriate New Construction	1 to 2
			Credit 4 Cultural/Historic Interpretation and Documentation	1 to 2
			Recreation Resources	10 Possible Points
			Credit 1 Carrying Capacity	1 to 2
			Credit 2 Maximizing Recreation Opportunity	2
			Credit 3 Public/Private Land and River Access	1 to 2
			Credit 4 Outdoor Ethics and Education	1 to 2
			Credit 5 Rewarding Sustainable Operations	1 to 2

			Built Environment	15 Possible Points
Y			Prereq 1 LEED Prerequisites	Required
			Credit 1 Optimize Energy Performance	1 to 3
			Credit 2.1 Green Building Programs: Participation and Compliance	1
			Credit 2.2 Green Building Programs: LEED Certification	1 to 5
			Credit 3.1 Waste Management: Reduce and Recycle	1 to 2
			Credit 3.2 Construction Waste: Materials Efficiency	1
			Credit 3.3 Construction Waste: Reuse of Organics	1
			Credit 4 Outdoor Spaces	1
			Credit 5 Size of Residential Dwellings	1
			Public Service and Infrastructure	15 Possible Points
Y			Prereq 1 Code Compliance	Required
			Prereq 2 Water Metering	Required
			Credit 1 Shared Services: Energy/Water Efficiencies	1
			Credit 2 Renewable Energy: Expanded Use	1 to 3
			Credit 3 Carbon Emissions Reduction	1 to 2
			Credit 4 Electrical Load/Demand Efficiency	1 to 2
			Credit 5 Water Use Efficiency	1 to 4
			Credit 6 Water Quality	1
			Credit 7 Snow Plan	1
			Credit 8 Utility Construction and Resource Management	1
			Transportation and Connectivity	10 Possible Points
Y			Prereq 1 Transportation Plan	Required
			Credit 1 Alternative Transportation Amenities	1 to 3
			Credit 2.1 Efficient Vehicles: Fleets	1 to 2
			Credit 2.2 Efficient Vehicles: Alternative Fuels	1 to 2
			Credit 3 Trails, Walkability and Pathways	1 to 3
			Community Vitality	9 Possible Points
Y			Prereq 1 Community Engagement	Required
			Credit 1 Housing Diversity	2 to 3
			Credit 2 Mixed Use	1 to 2
			Credit 3 Business/Employment Opportunities	1 to 2
			Credit 4 Public Spaces: Availability and Access	1 to 2
			Special Credit Opportunities	12 Possible Points
			Credit 1 Exceptional LEED Performance	1 to 3
			Credit 2 Sustainable Agriculture	3
			Credit 3 Site Development for Extraction Projects	3
			Credit 4 Other Innovations	1 to 3
			Project Totals (pre-certification estimates)	100 Possible Points

40 - Certified points 50 - Silver points 60 - Gold points 80 - Platinum points

Format based on US Green Building Council's LEED Rating System. Used with permission 2006

YELLOWSTONE BUSINESS PARTNERSHIP

PO Box 7337 Bozeman, MT 59771 * 406-522-7809 * 888-583-8283 * info@yellowstonebusiness.org

Pocatello's YBP Scorecard



GY-FRAMEWORK FOR SUSTAINABLE DEVELOPMENT SCORECARD

Yes	?	No	Project Planning and Investments		6 Possible Points
Y			Prereq 1	Asset Inventory and Spirit of Place	REQUIRED
0-1	2		Credit 1	Region Based Accredited Professional	1
3			Credit 2	Qualified Professional - Cultural Resources	1
	1		Credit 3	Local/Regional Business Support	1
0-3			Credit 4	Sustainability Investments	1 to 2
0-1			Credit 5	Continuous Improvement (Plan for Ongoing Compliance)	1
Yes	?	No	Land Use and Conservation		13 Possible Points
		2	Credit 4	Sensitive Resources	2
		4	Credit 5	Slopes	4
		4	Credit 3.1	Views: Visual Quality	4
		4	Credit 3.2	Views: Night-Sky	4
		3	Credit 4	Defensible Space	1
	1	2	Credit 5	Density and Open Space	2 to 4
	1		Credit 6	Brownfield Restoration	1
2			Credit 7	Land Conservation	1 to 2
Yes	?	No	Biodiversity		12 Possible Points
Y			Prereq 1	Co-existing with Wildlife	REQUIRED
1	1	1	Credit 1	Preservation of Aquatic Resources	1 to 3
0-1		2	Credit 2	Surface and Ground Water Conservation	1 to 3
2			Credit 3	Habitat Conservation and Connectivity	1 to 2
	1		Credit 4	Vegetative Management	1 to 2
	1		Credit 5	Habitat Restoration and Enhancement	1
0-1			Credit 6	Fence Siting and Materials	1
0-1			Credit 7	Domestic Animal Management	1
Yes	?	No	Cultural and Historical Values		9 Possible Points
0-2			Credit 1	Cultural Resource Conservation and Management	1 to 2
2	1		Credit 2	Conservation of Cultural/Historic Structures	1 to 3
4			Credit 3	Historically Appropriate New Construction	1 to 2
3			Credit 4	Cultural/Historic Interpretation and Documentation	1 to 2
Yes	?	No	Recreation Resources		10 Possible Points
		2	Credit 1	Carrying Capacity	4 to 3
	2		Credit 2	Maximizing Recreation Opportunity	2
0-1	1		Credit 3	Public/Private Land and River Access	1 to 2
1-2			Credit 4	Outdoor Ethics and Education	1 to 2
1	1		Credit 5	Rewarding Sustainable Operations	1 to 2

Yes	?	No	Built Environment		15 Possible Points
Y			Prereq 1	LEED Prerequisites	REQUIRED
0-2		1	Credit 1	Optimize Energy Performance	1 to 3
		4	Credit 2.1	Green Building Programs: Participation and Compliance	4
	1	4	Credit 2.2	Green Building Programs: LEED Certification	1 to 5
1-2			Credit 3.1	Waste Management: Reduce and Recycle	1 to 2
	1		Credit 3.2	Construction Waste: Materials Efficiency	1
		4	Credit 4.3	Construction Waste: Reuse of Organics	4
		4	Credit 4	Outdoor Spaces	4
1		1	Credit 5	Size of Residential Dwellings	1
Yes	?	No	Public Service and Infrastructure		15 Possible Points
Y			Prereq 1	Code Compliance	REQUIRED
Y			Prereq 2	Water Metering	REQUIRED
1	1		Credit 1	Shared Services: Energy/Water Efficiencies	1
1		2	Credit 2	Renewable Energy: Expanded Use	1 to 3
		1	Credit 3	Carbon Emissions Reduction	4 to 2
0-1			Credit 4	Electrical Load/Demand Efficiency	1 to 2
1-2	1	1	Credit 5	Water Use Efficiency	1 to 4
	3		Credit 6	Water Quality	1
1			Credit 7	Snow Plan	1
	1	1	Credit 8	Utility Construction and Resource Management	1
Yes	?	No	Transportation and Connectivity		10 Possible Points
Y			Prereq 1	Transportation Plan	REQUIRED
1		2	Credit 1	Alternative Transportation Amenities	4 to 3
		2	Credit 2.1	Efficient Vehicles: Fleets	4 to 2
	1	1	Credit 2.2	Efficient Vehicles: Alternative Fuels	1 to 2
0-1	1	1	Credit 3	Trails, Walkability, and Pathways	1 to 3
Yes	?	No	Community Vitality		9 Possible Points
Y			Prereq 1	Community Engagement	REQUIRED
1-2		1	Credit 1	Housing Diversity	2 to 3
2			Credit 2	Mixed Use	1 to 2
2			Credit 3	Business/Employment Opportunities	1 to 2
1	1		Credit 4	Public Spaces: Availability and Access	1 to 2
Yes	?	No	Special Credit Opportunities (not included in Project Total)		12 possible points
		1	Credit 1	Exceptional LEED Performance	4 to 3
1-2	1		Credit 2	Sustainable Agriculture	3
		3	Credit 3	Site Development for Extraction Projects	3
	1-3		Credit 4	Other Innovations	1 to 3
33-53	28-28	37	Project Totals (pre-certification estimates)		100 Possible Points
40 - Certified points 50 - Silver points 60 - Gold points 80 - Platinum points					
Format based on U.S. Green Building Council's LEED Rating System. Used with permission 2006					
YELLOWSTONE BUSINESS PARTNERSHIP					
PO Box 7337 Bozeman, MT 59711-7337 * 406-522-7809 * 888-583-8283 * info@yellowstonebusiness.org					

Work Plan

Yellowstone Business Partnership Public Service and Infrastructure

PSI Credit 1: Shared Services: Energy/Water Efficiencies

POINTS	WHAT	WHO	STATUS	NOTES
1	Municipality must work to explore opportunities for neighborhood based renewable energy. Remove barriers/make exceptions for developments pursuing alternative infrastructure solutions (wind, solar, grey water, etc)	RC	Document	Wind Turbine Code changes can help earn this goal.
1	Promote alternative infrastructure by offering incentives to developers who are reducing the load or demand on the municipality supplied services. Organize and facilitate, encourage, or enable (private, city or county owned) renewable, community-owned and used energy production systems.	HS	Maybe pursue	Wind studies... only Trail Creek; Solar studies.
1-2	TOTAL WE EXPECT TO GET			

Submittals

- ☐ Letter stating requirements have been met
- ☐ Copy of pertinent regulations/policies/codes

Needs

- Support to develop/revise codes and policies

The City of Bozeman's Challenge

“We [the City Commission] want Bozeman to be the most business friendly community in the state of Montana.”

- Bozeman Mayor Jeff Krauss**



The City of Bozeman's Economic Development Plan

Goals and Strategies

1. Support the expansion and retention of existing businesses and economic clusters that will continue to strengthen and diversify the economy and create higher paying jobs in Bozeman;
2. Maintain and upgrade infrastructure to support current and future needs of business;
3. Support education and workforce development initiatives to provide Bozeman with the qualified workers to meet the needs of business;
4. Leverage local, state and federal economic development resources to enhance economic growth in Bozeman;
5. Create a more collaborative and effective working partnership between the business community and the City of Bozeman and effectively manage the City of Bozeman's regulatory environment to accomplish goals without hindering business expansion and economic growth; and
6. Maintain the high quality of life that is considered an important asset to the business community.

The City of Bozeman's Priorities and Recommendations

- 1. Ongoing financial commitment to economic development;**
- 2. Commitment to a business-friendly process with a focus on retention and expansion of existing local businesses;**
- 3. Stabilize existing local incubators and create a full service business incubator program to achieve a healthy business ecosystem;**
- 4. Core Services and Infrastructure;**
- 5. Identification and Establishment of Business Incentives;
and**
- 6. Workforce Development.**