





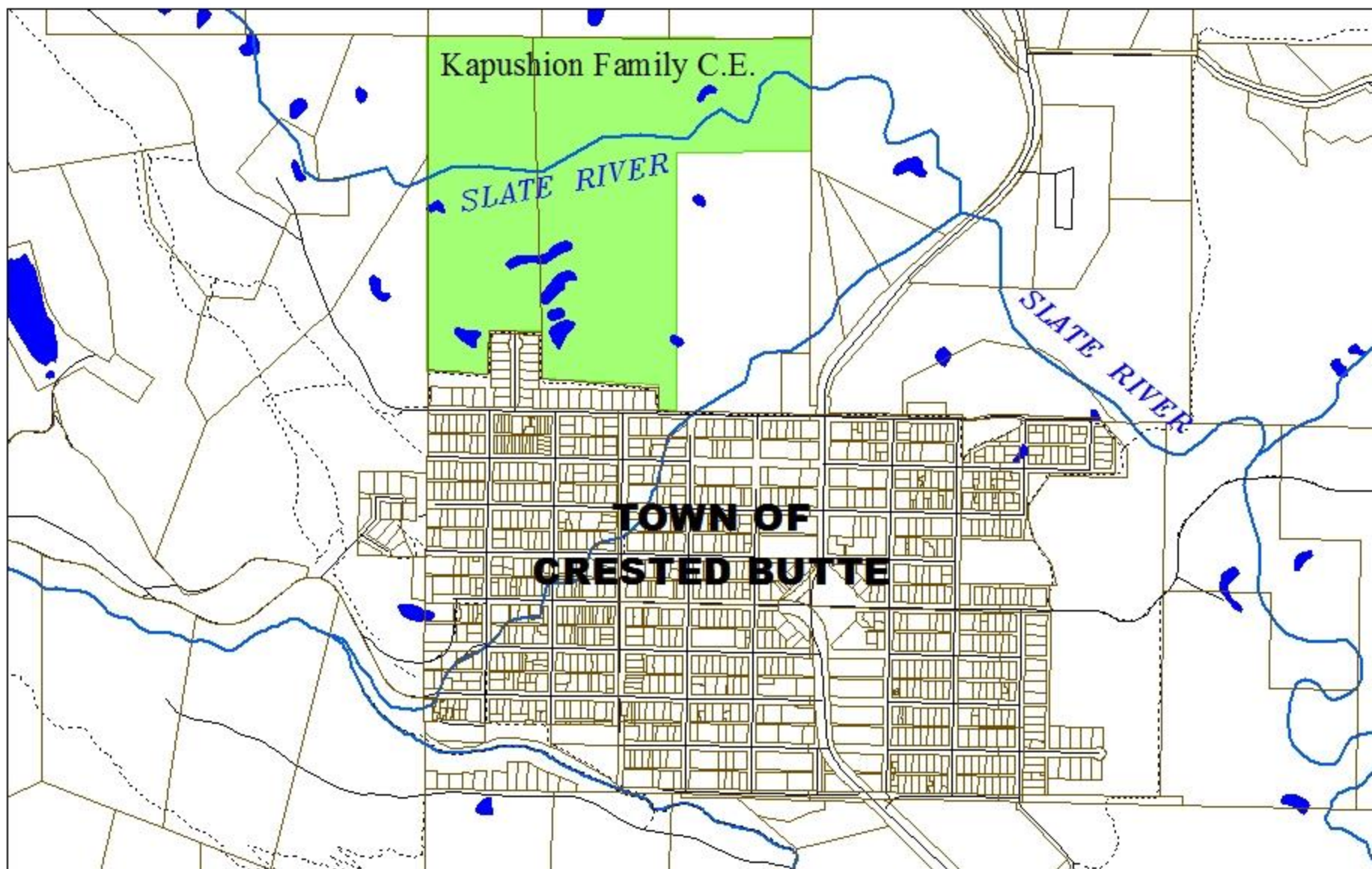




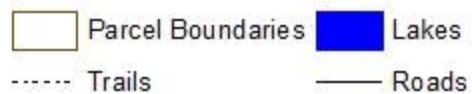
"New Town" C.F.&I. employee housing, built in the 1920s.

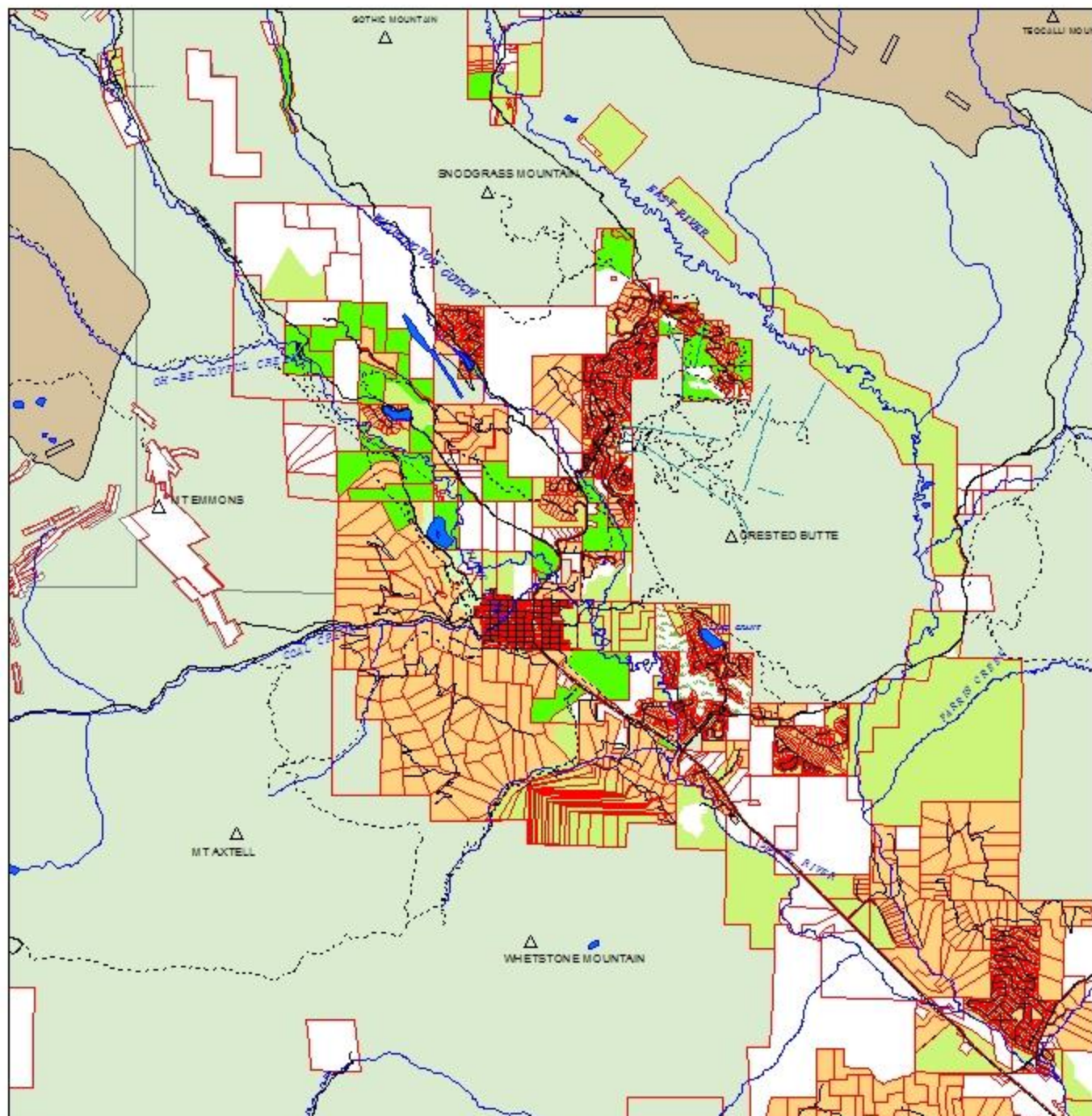
Crested Butte Values, 1991

- Beautiful Scenery
- Summer outdoor recreation opportunities
- Vistas
- Small population
- Clean air
- Abundance and variety of wildflowers
- Abundance and variety of wildlife
- Open space between developments
- Clean water, in lakes and streams
- Winter outdoor recreational opportunities



Location of Kapushion Family Conservation Easement





















Peanut Mine, Spring 2001
Photo courtesy of
Colorado Division of Minerals and Geology





THE COMPANY STORE

STOP

