

Quick How-To

- ▶ If audio does not start automatically, please move your cursor over the bottom of the slide to make an audio bar appear, then press play.
- ▶ Enjoy!

Right-Sizing Parking in Transit-Rich Neighborhoods

ROCKY MOUNTAIN LAND USE INSTITUTE
2021 WESTERN PLACES / WESTERN SPACES

RMLUI WP/WS

2021-03-02 22:30 UTC

Recorded by

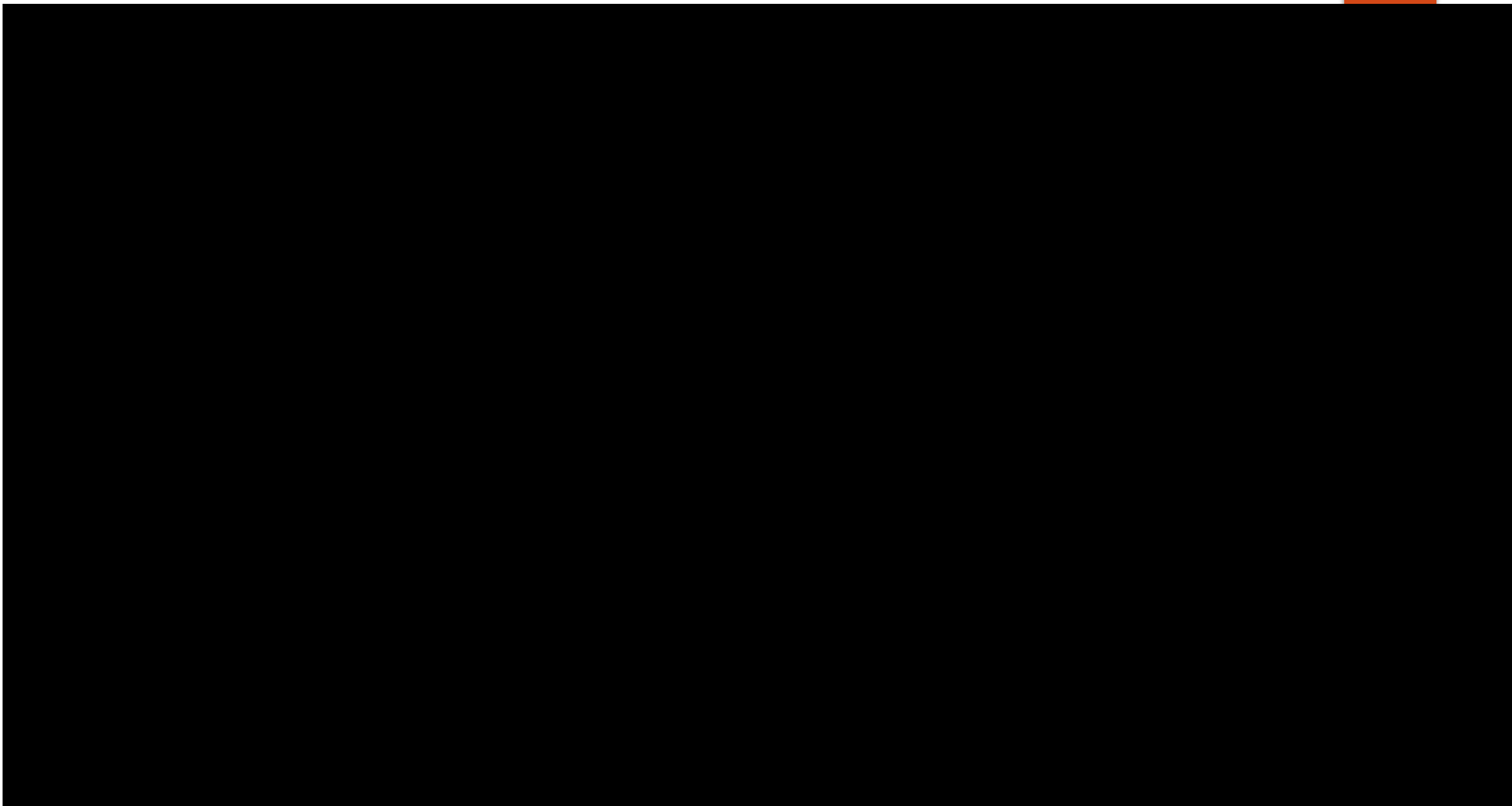
John Hersey

Organised by

John Hersey

Channel

General



Denver's Vehicle Parking Evolution

REMOVING BARRIERS TO HOUSE PEOPLE.

Attainable Housing and Parking Reductions

Rocky Mountain Land Use Institute, Western Places/Spaces 2021



Roshana Floyd

Senior Planner

Roshana.floyd@cityoflonetree.com



Alex Hufft

Planner I

Alex.Hufft@CityofLoneTree.com



SYNERGY

Strateg

Relationships

Cohesion



City of Lone Tree
**2019-2021
Strategic
Plan**



CITY OF LONE TREE

Laying the Groundwork

- ▶ Our Vision
- ▶ Our Mission
- ▶ Our Values
- ▶ Six Big Ideas



City of Lone Tree Comprehensive Plan

Vision Statement | Lone Tree is a premier community connected by great neighborhoods, vibrant public spaces, a beautiful natural environment, and thriving businesses.

Adopted by City Council on January 15, 2019



- ▶ Housing Policies
- ▶ Transit-Oriented Development





CITY OF LONE TREE 2040 TRANSPORTATION PLAN

AS ADOPTED BY CITY COUNCIL ON

March 3, 2020

Submitted to

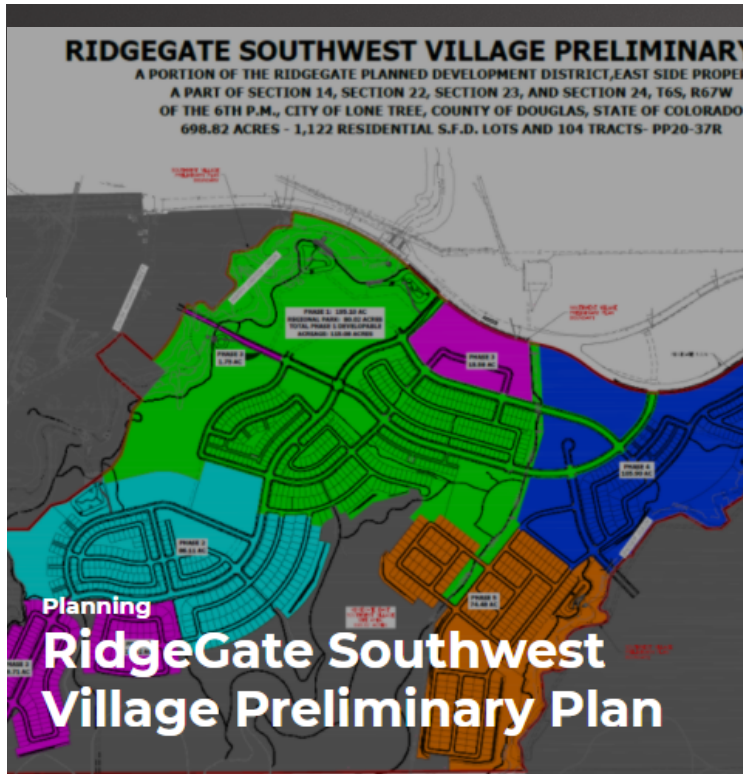
City of Lone Tree
9220 Kimmer Drive
Lone Tree, CO 80124

Submitted by

David Evans and Associates, Inc.
1600 Broadway, Suite 800
Denver, CO 80202



Sky Ridge Station Transit Oriented Development
Subarea Plan
January 2015

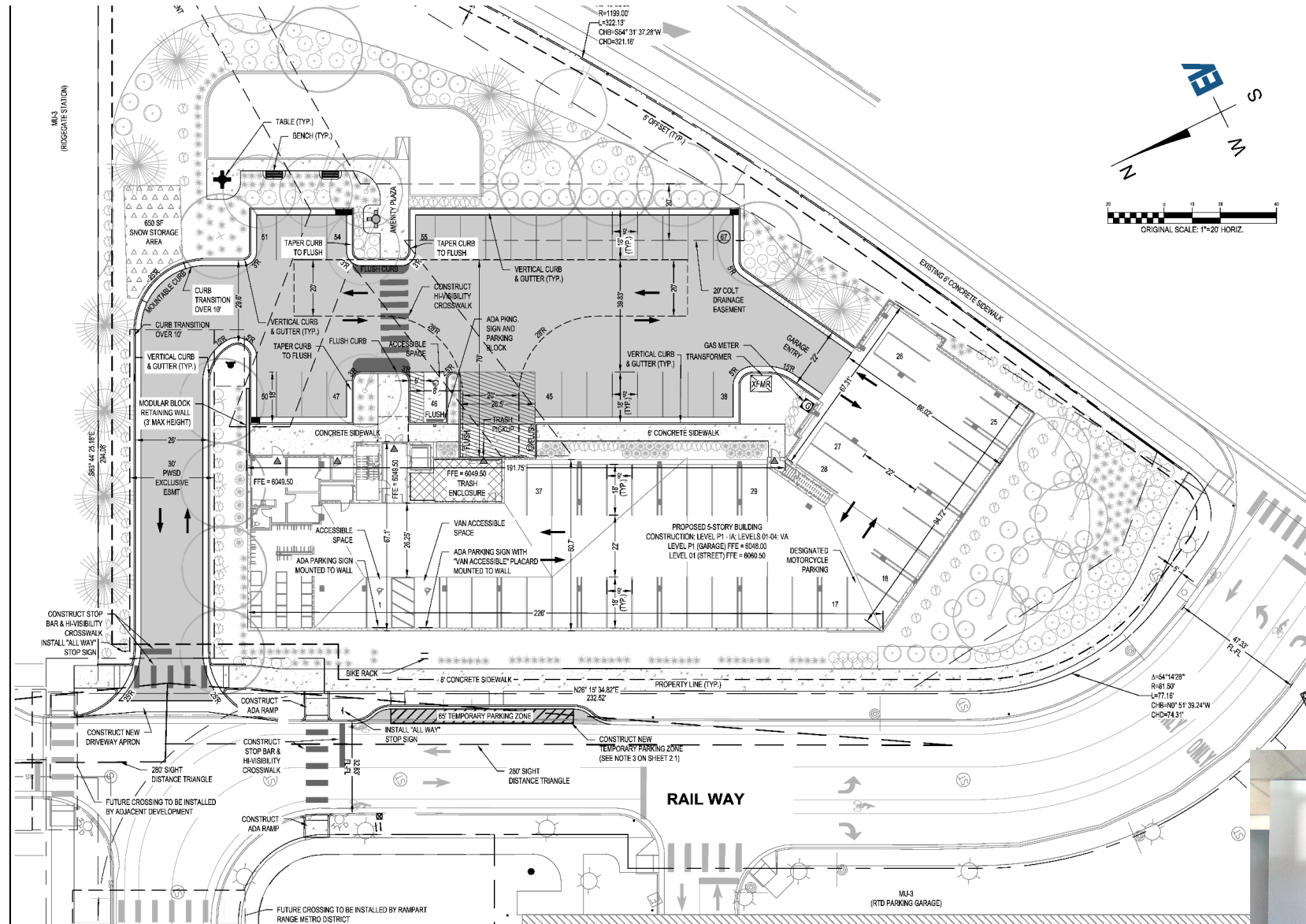


Flexible Zoning Regulations (is that possible?)



Koelbel Attainable Apartment s





Moving Forward

- ▶ RTD study helped set precedent for future development
- ▶ City Council had no pushback regarding parking due to the extensive research
- ▶ A starting point for the city to start putting the citizen before the car





Thank You!



Panel Conversation

- ▶ John Hersey, AICP, LEED AP ND
 - ▶ Former Senior Associate for Transit-Oriented Development, RTD
- ▶ Rev. Laura Rossbert
 - ▶ Chief Operating Officer, Shopworks Architecture
- ▶ Analiese Hock, AICP
 - ▶ Principal City Planner, City and County of Denver
- ▶ Roshana Floyd, MPA, AICP, CFM and Alex Hufft
 - ▶ Senior Planner // Planner 1, City of Lone Tree

RMLUI WP/WS Convo

2021-03-01 15:43 UTC

Recorded by

John Hersey

Organized by

John Hersey

Channel

General