



THE
TRUST
for
PUBLIC
LAND



THE TRUST *for* PUBLIC LAND
CONSERVING LAND FOR PEOPLE



**Greenprinting Case Studies and
Lessons from the Field**

Kelley Hart

What is The Trust for Public Land's Mission?



The Trust for Public Land conserves **land for people** to enjoy as parks, gardens, and other natural places, ensuring livable communities for generations to come.

How do you create a Greenprint?



Current Conditions Analysis

Goal Setting & Public Engagement

Model Design & Data Collection

Model Presentation & Final Refinement

Action Planning

Final Products

Support Program Design

Where we work



How we are doing

- 452 related real estate transactions
- 153,200 acres of land conserved
- \$84.5 million in new funding for conservation

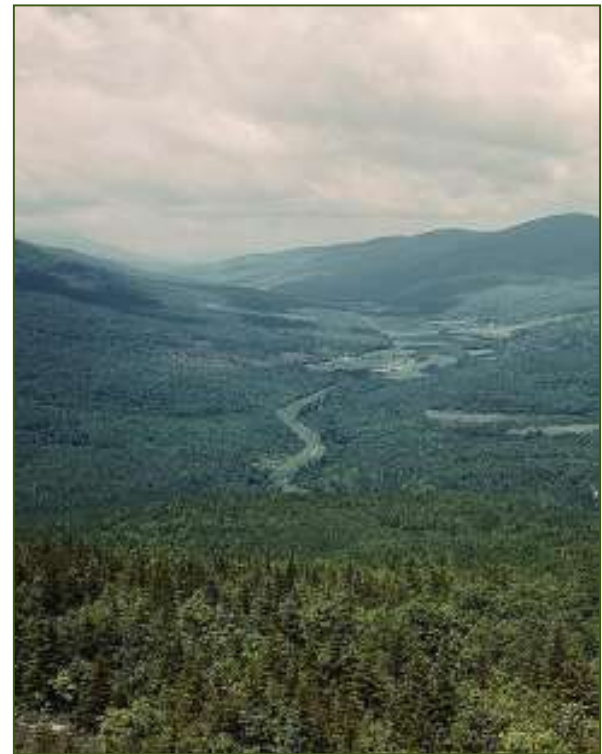




Case Studies



*Deschutes
County, OR*



*White Mountains, NH to
Moosehead Lake, ME*

Greenprint for Deschutes County



THE TRUST *for* PUBLIC LAND
CONSERVING LAND FOR PEOPLE



A Greenprint for Deschutes County

The Greenprint for Deschutes County is a conservation plan that identifies the landscapes that contribute the most to our quality of life and the economic prosperity of our region. It highlights special places that make Deschutes County a great place to live, work, and play and create a unique competitive advantage as we work to build a healthy economy.

Deschutes County's prosperity is directly tied to the character of our landscape and the way our community integrates it into every aspect of life. People are drawn to central Oregon for its world-class scenery, outstanding

recreation opportunities, and abundant wildlife—all within minutes of our urban centers. Survey after survey has found that our region's quality of life is a key driver that attracts the entrepreneurs and modern businesses that are helping to diversify our local economy.

With the current slowdown, local leaders have seized the opportunity to plan for a future that ensures that businesses, visitors, students, and families continue to find Deschutes County desirable. The greenprint is a key investment in our region's economic prosperity and community stability.

But Deschutes County wasn't immune to the nationwide recession. Soon after the community launched the greenprint initiative, the flood of new arrivals abated, and the county's red-hot housing market sank into a deep freeze. By May 2009, the county's unemployment rate was 16.7 percent—one of the worst in the nation.

But despite the downturn, people are still drawn to Deschutes County. As the economy recovers, the population is projected to swell to 240,000 people by 2025. Right now—with land prices reduced and many property owners looking to sell—is a cost-effective time to invest in land and water conservation. Preserving and improving the best of our region's accessible recreation and wildlife habitat will ensure that our quality of life continues. That, in turn, will attract new businesses, broaden the employment base, and diversify our economy.



Legend

Overall Conservation and Recreation	Managed Land	Water Features
Value:		
Lowest High of 10 miles to Ocean	Private Land	Lake
Second Highest of 10 miles to Ocean	State Land	Flowing Water
Third Highest of 10 miles to Ocean	US Forest Service	Non-flowing Water
Fourth Highest of 10 miles to Ocean	Wilderness Area	Highway
	Wilderness Study Area	Waterway
	Urban Growth Region	

The map displays the Overall Concentration and Dispersion Values for the Corporation for Chesapeake County. The degree of value is shown using a color scale with red representing areas where the highest number of goals overlap, dark orange areas where the second highest number of goals overlap, and orange representing areas where the third highest number of goals overlap.

These values are the result of a weighted analysis on the following suggested values generated from the April 2, 2010 stakeholder meeting:

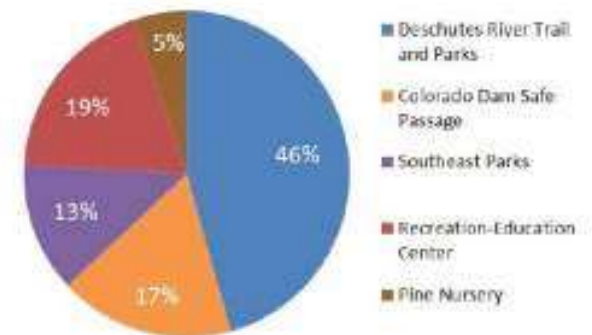
Protect Habitat and Significant Biological Areas	31 %	Protect Historic Landmarks	10 %
Protect Waters Quality	30 %	Protect Historic and Cultural Resources	9 %
Create Trails and Recreation Access Opportunities	15 %	Protect Scenic Views and	8 %
Protect Parks and Natural Landscapes	12 %	Protect Designated Habitat	7 %

[illegible]

Bend: \$29 million bond passed in 2012



Estimated Distribution - \$29 million



Conservation Success

Projects:

Millers Landing (6 acres)

Wychus Canyon (450 acres)

Wychus Creek (6 acres)

Gofer Gulch (122 acres)



Millers Landing



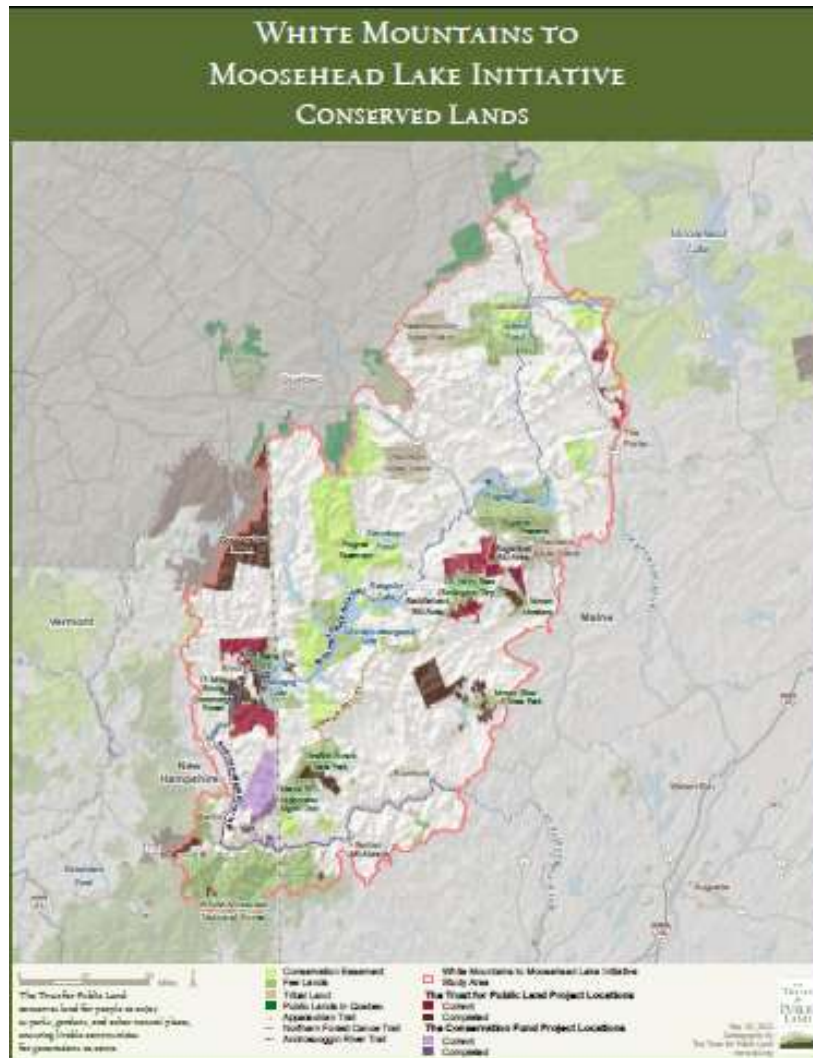
White Mountains to Moosehead Lake Initiative



[illegible]

- *Tailored to Resilient Sites for Terrestrial Conservation data (Anderson, et al., 2012)*
- *Links more than 1.5 million acres of conserved land*
- *Contains Northern Forest's most climate-sensitive species, including Bicknell's thrush, Canada lynx, and Atlantic salmon*
- *Named one of three initial Demonstration Projects for North Atlantic LCC*

White Mountains to Moosehead Lake Initiative



Much Has Been Done in White Moose:

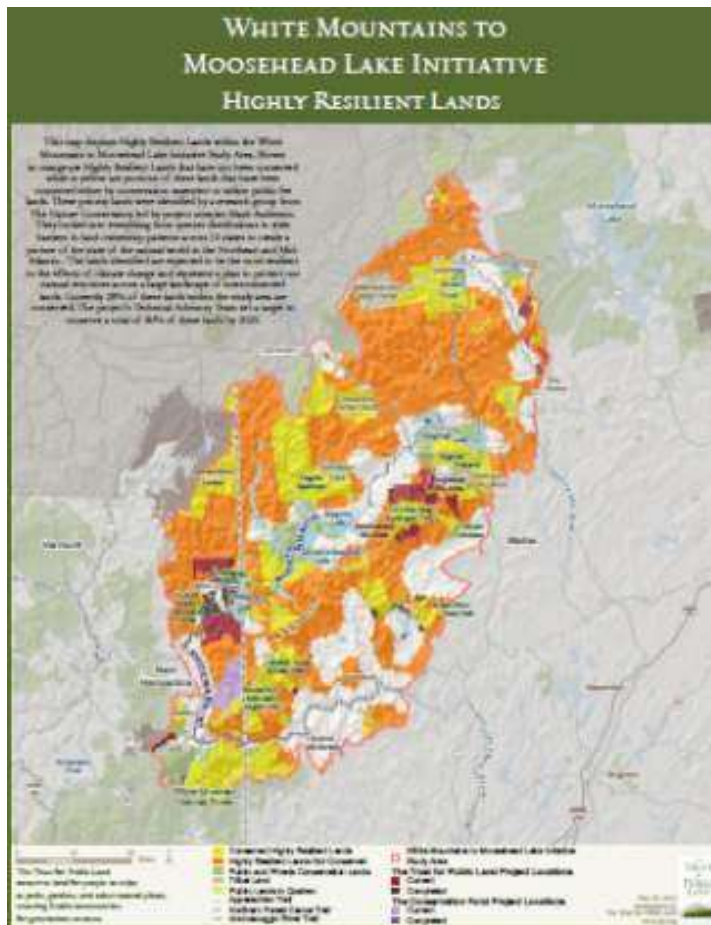
- 50,000 acres protected in FY11/12
- 130,000 acres protected since '02

New Initiative Will Guide Future Work to:

- Maintain Healthy and Resilient Resources*
- Preserve Working Forests
- Increase Opportunities for Outdoor Recreation

*Study area aligns with *Resilient Sites for Terrestrial Conservation in the Northeast and Mid-Atlantic Region* (Anderson, et al., 2012)

White Moose Plan Taps Climate-Related Data



Coarse Filter

- *Focal Areas for Resilience (Anderson, et al.)*
- *Staying Connected*
- *Two Countries, One Forest*
- *Matrix Forest Blocks*

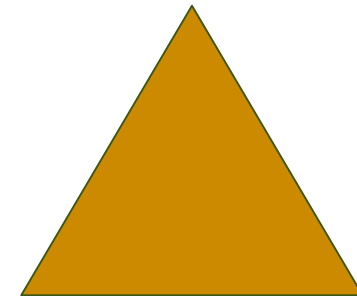
Fine Filter

- *NALCC Designing Sustainable Landscapes (McGarigal, Lecher, et al.)*
- *Eastern Brook Trout Refugia (Trout Unlimited)*
- *Eastern Brook Trout JV Priority Watershed Scores*
- *Atlantic Salmon Habitat*
- *Bicknell's Thrush Habitat*
- *Canada Lynx Habitat*
- *Boreal Forest Resilience (Paradis, et al.)*



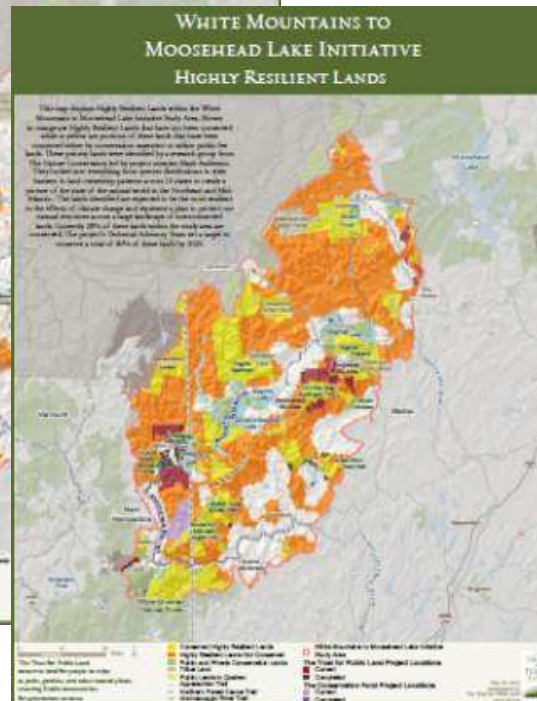
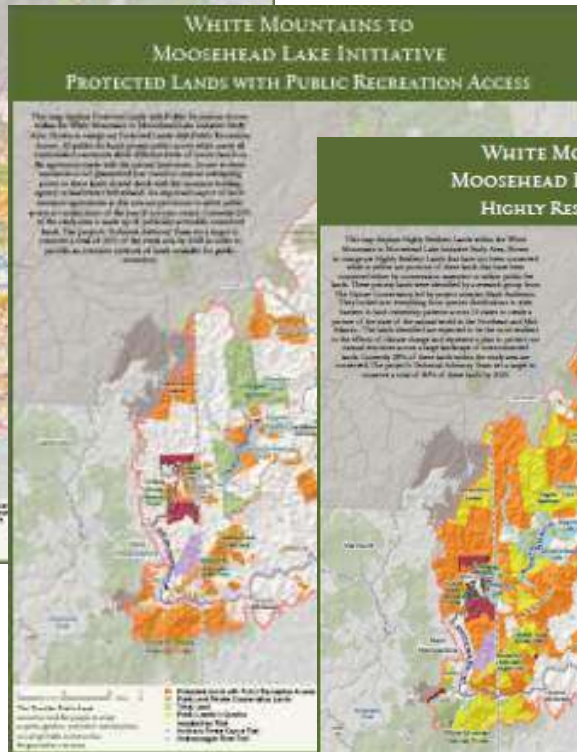
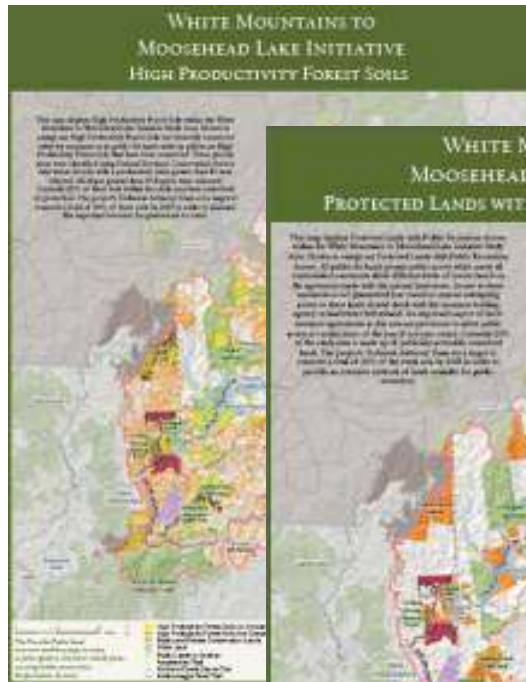
Goals of Initiative:

Climate Resilience



Outdoor Recreation

Working Forests



Synthesizing Partners in White Moose



Top photo: Andover Old Home Days

Bottom photo: Mahoosuc Initiative Meeting, Berlin, NH

Mahoosuc Initiative +
High Peaks Alliance +
Northern Forest Investment Zone =
*WHITE MOUNTAINS TO
MOOSEHEAD LAKE INITIATIVE*



HOME | ABOUT | BLOG | HELP | DONATE | LANGUAGE: English | LOG OUT

DATA BASIN

Explore • Create • Share • Learn

14

Search This Group

My Workspace

Datasets

Maps

Galleries

People

Groups

Welcome Brenda Faber

White Mountains to Moosehead Lake Initiative

Group Home

Profile

Bookmarks

Discussions

Members (8)

Membership Requests (1)

Supporting Documents

Brenda Faber

Messages

Create a Map

Import a Dataset

Create a Group

Create a Gallery

DATA BASIN | GROUPS | WHITE MOUNTAINS TO MOOSEHEAD LAKE ... | HOME

Manage Group

WHITE MOUNTAINS TO MOOSEHEAD LAKE INITIATIVE

Welcome.

White Mountains to Moosehead Lake Initiative Partners Data Exchange

This site will allow you to:

- Share data with partners (access is limited to invited partners only).
- Create and share custom maps.
- Analyze proposed conservation projects based on critical resource value.

If this is your first visit to this group, click on **Supporting Documents** (menu to the left in green) and then open the tutorial for hints on how to use the site.

Links:

- Measures of Progress
- Project Partners

19

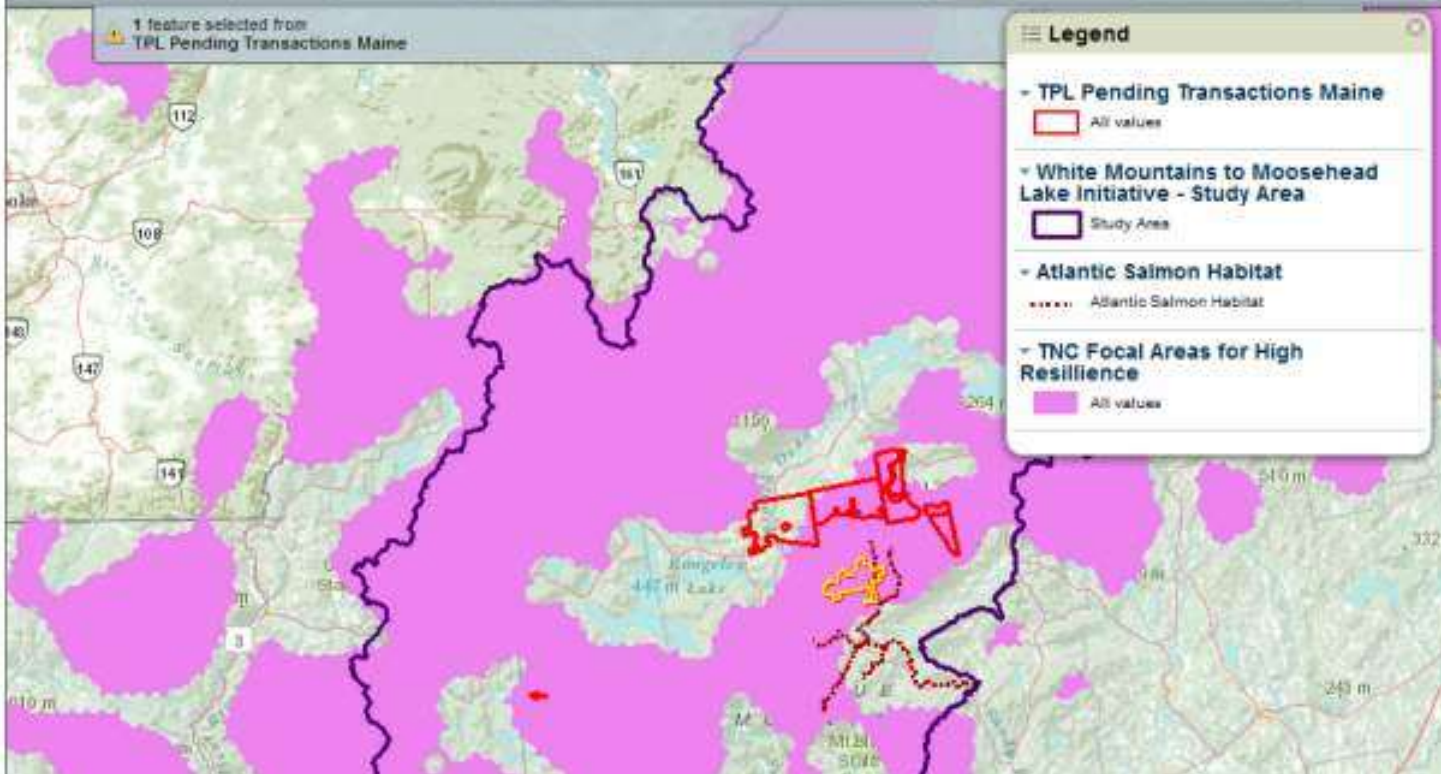
© Copyright 2004 The Trust for Public Land

Project Profiling and Analysis Map

12 datasets

Created 8/17/12 8:28 PM by:
Brenda Faber
map details

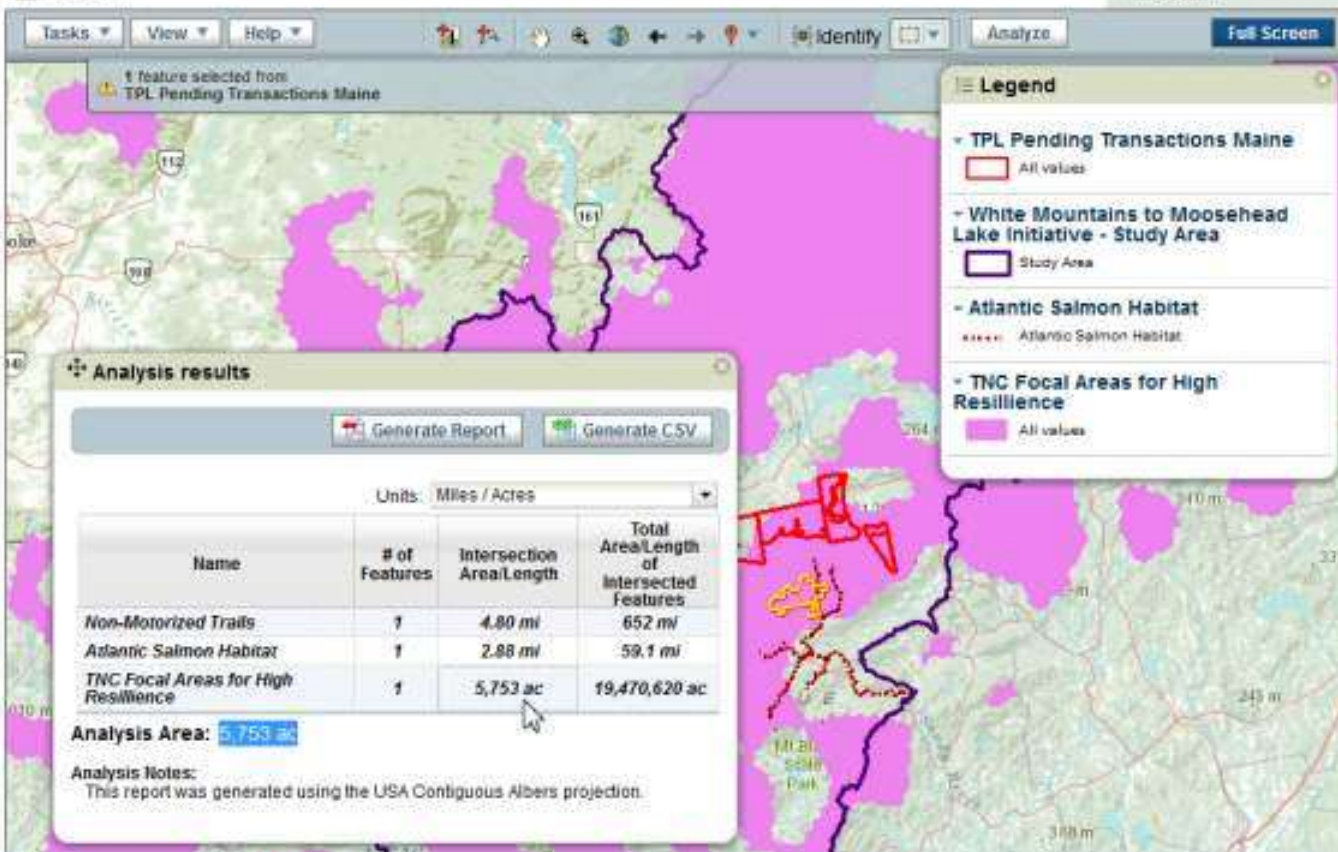
Tasks View Help



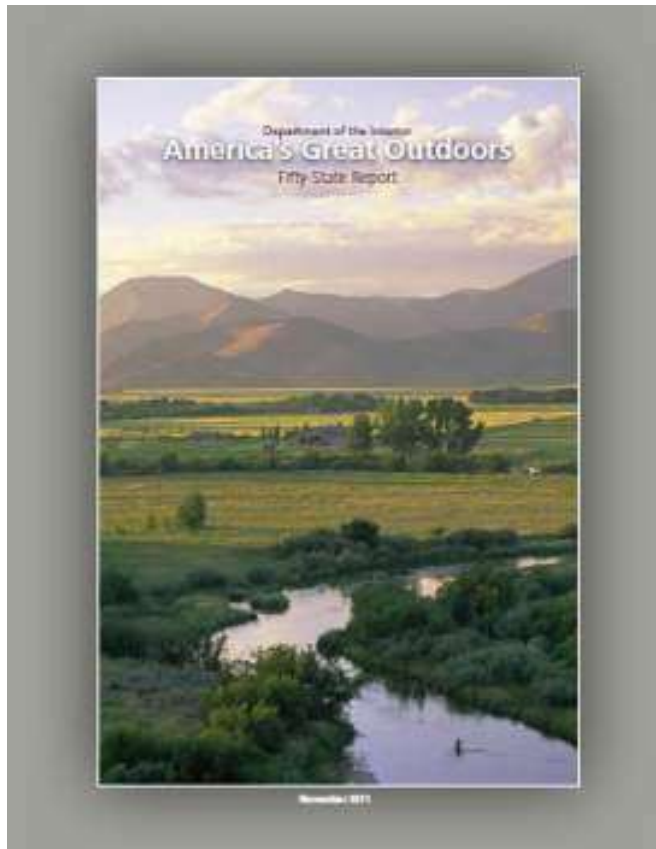
Project Profiling and Analysis Map

13 datasets

Created 8/17/12 8:28 PM by:
Brenda Faber
map details



Alignment with federal funding priorities



AGO Helps White Moose:

- *\$16M awarded to four FY12 projects totaling 35,000 acres*
- *USFWS has approved PPP for climate-oriented High Peaks NWR*
- *\$3M in new NRCS funding being directed into the landscape*
- *Providing support for TPL grant proposals, including \$1M request to Acres for America*



White Mountains to Moosehead Lake Initiative

Measures of Progress

Preserve Workable Forests

- ☐ High Productivity Forest Soils
- ☐ Private Workable Forests

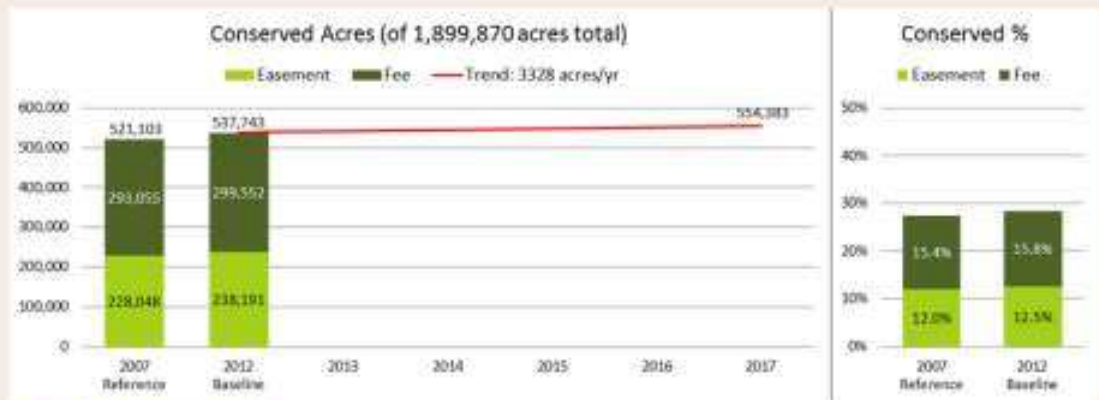
Maintain Healthy and Resilient Natural Resources

- ☐ Eastern Brook Trout Habitat
- ☐ Atlantic Salmon Habitat
- ☒ Highly Resilient Lands
- ☐ State Wildlife Action Plan

Increase Opportunities for Outdoor Recreation

- ☐ Non-Motorized Trail Network
- ☐ Motorized Trail Network

Conservation Progress: Highly Resilient Lands



[What Do These Charts Mean?](#)

Featured Project Results

[Zoom Project](#)

[Next Project \(7/17\)](#)



Dead River Trail

878 acres total

Highly Resilient Lands:
383 acres (44% of project area)

[Learn more ...](#)

Study Area Map

[Zoom Home](#)

[Hide Legend](#)

Map Legend

- Study Area boundary
- highly resilient lands
- Easements
- Fee and Other Conserved Lands





THE TRUST *for* PUBLIC LAND
CONSERVING LAND FOR PEOPLE

Conservation Success



THE
TRUST
for
PUBLIC
LAND

