

# Sustainable Communities (Partnership)

Rocky Mountain Land Use Institute Conference  
March 4, 2011



# Six Livability Principles



- Support Existing Communities
- Provide more Transportation Choices
- Value Communities and Neighborhoods
- Promote Equitable Affordable Housing
- Coordinate Policies and Leverage Investments
- Enhance Economic Competitiveness

# Demographics



## **Region VIII – Rocky Mountain Region**

US Census  
Estimates

2009	Colorado	Wyoming	North Dakota	South Dakota	Utah	Montana
Total population	5,024,748	544,270	646,844	812,383	2,784,572	974,989
Urban population	4,338,362	163,362	330,805	377,477	2,480,155	345,354
Rural population	686,386	380,908	316,039	434,906	304,417	629,635
Percent that is urban	86.34%	30.01%	48.86%	46.47%	89.07%	35.42%

# LO DO

LoDo, Larimer & Riverfront.  
Over the past two decades, LoDo (lower downtown) has been restored, and renovated into one of the liveliest areas in the city; with one of the largest concentrations of Victorian and turn-of-the-century architecture in the country.





# La Alma Lincoln Park



The neighborhood, is one of Denver's oldest and is just to the south of the area where Denver was first settled in the 1850s. Many houses date from about 1900.



# Garfield County

Carbondale, Glenwood Springs, New  
Castle, Parachute, Rifle, Silt





# East Billings Master Plan

- Energy
- Open Space
- Main Street
- Affordable Housing
- Comprehensive Plan



# 2010 Sustainable Communities Planning Grants, Community Challenge/Tiger II Grants and Brownsfield Grants



Environment

Energy



Transit Oriented Development



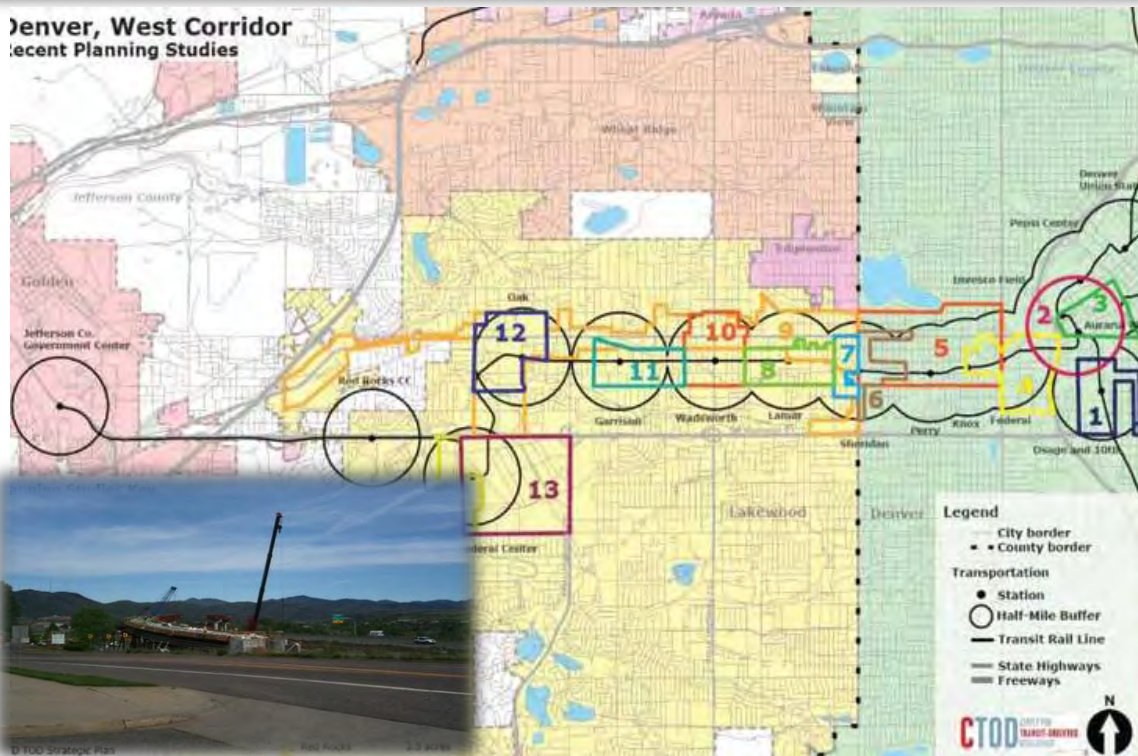
Planning



# City and County of Denver

Challenge/Tiger II Grant \$2,953,372  
Brownsfield Grant (EPA) \$175,000

Denver, West Corridor  
Recent Planning Studies

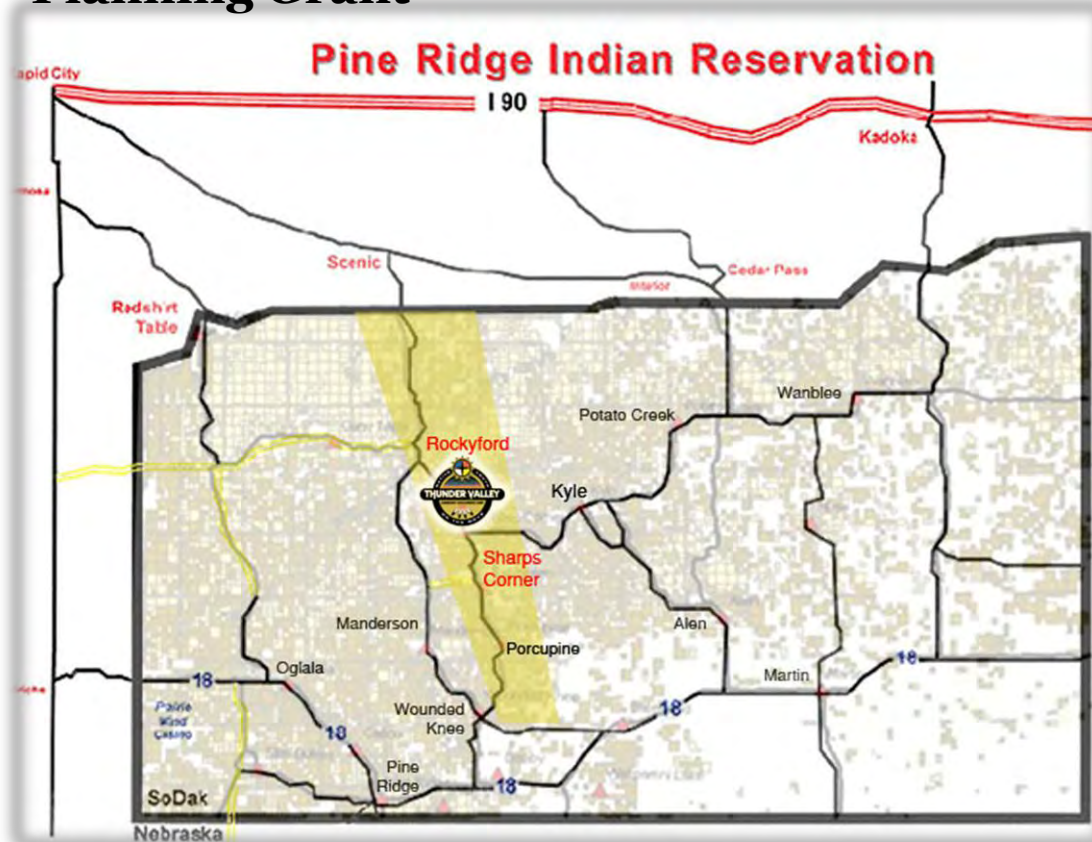


Sheridan Blvd Station  
and Knox Perry  
Station areas



# Thunder Valley CDC Oglala Lakota Nation

**\$996,100 Sustainable Communities  
Planning Grant**



The HUD-DOT-EPA Partnership are working with Thunder Valley CDC and the Oglala Lakota Nation to develop a regional plan that will encompass the entire Pine Ridge Reservation in the area of Housing, Land Use, Environment, Water, Natural Resources, Health, Transportation, Food/Agriculture, Education, Energy, Waste Water, Social Services, Public Facilities and Public Improvements, Safety, Culture and Spirituality.

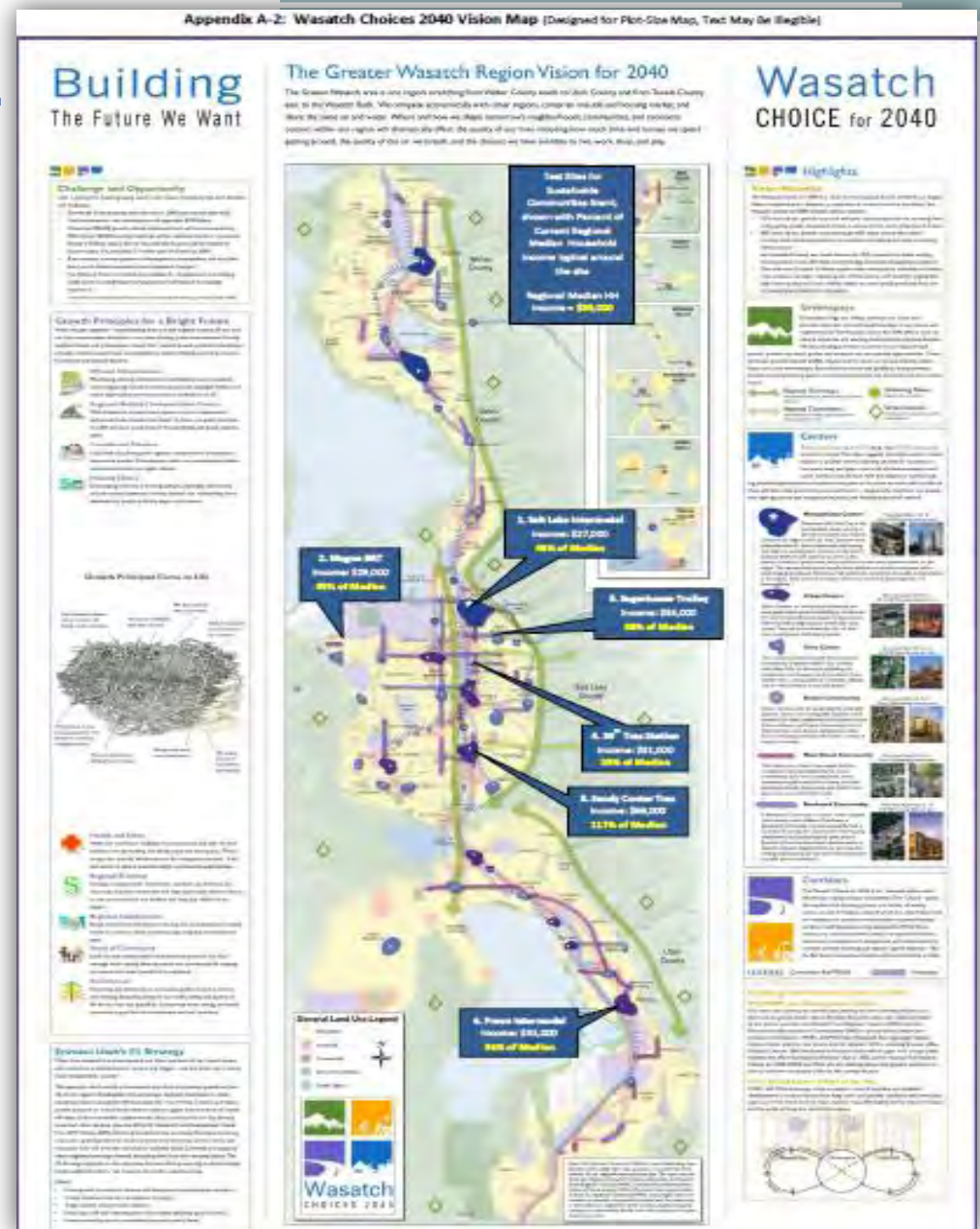
Pine Ridge Reservation data from  
2000 Census and 2005-2009  
American Community Survey ACS  
average

CATEGORY	2000	2005-2009 Average	Total Change	2000 Share of Total	2005-2009 Share of Total
POPULATION	15,542	18,629	19.9%		
POPULATION BY AGE					
19 and under	7,558	7,917	4.7%	48.6%	42.5%
20-34	3,212	4,180	30.1%	20.7%	22.4%
35-54	3,132	4,078	30.2%	20.2%	21.9%
55-64	866	1,173	35.5%	5.6%	6.3%
65 and older	774	1,281	65.5%	5.0%	6.9%



# Wasatch Choice 2040

- The \$5 million Sustainable Planning Grant
- Create an open-source development tool
- Support 6 catalytic TOD projects
- Develop a sustainable citizen education curriculum
- Develop a regional housing plan incorporating Fair Housing principles



# The Wasatch Choice 2040 Plan

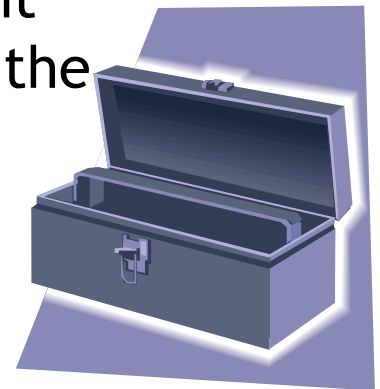
The Wasatch Choice 2040 Plan is under an umbrella of Salt lake County Acting as the Federal Agent for the grant; coordinating overall process.

Programs underway by the partner agencies:

- Envision Tomorrow Plus - University of Utah will develop the (computer analysis and planning) tool and the Wasatch Front Regional Council of Government (WFRC) and Mountain land Association of Government (MAG) will utilize the tool in their planning strategies.
- Catalytic Site Development - Six TOD sites were identified in the original plan. These sites will be analyzed, two of them will be brought up to an implementation of a plan level and the remaining four will be analyzed and brought to a preliminary design level.

## The Wasatch Choice 2040 Plan Continues....

- Regional Housing Plan - An Analysis of Impediments of Fair Housing Choice Plan is being developed.
- Education, Financial Form, Policy Advocacy and Transferability - Form base code designs are being developed with the Utah Chapter of the American Planning Association (APA).
- Developing a best practice toolbox for community meetings and public education on the overall grant program enabling other communities to replicate the entire program's success.





# Questions and Answers

**Rick Garcia, Regional Administrator, Region VIII**  
**U.S. Department of Housing and Urban Development**  
**1670 Broadway**  
**Denver, CO 80202**  
**(303) 672-5440**

