



Sheridan Station Catalytic Project

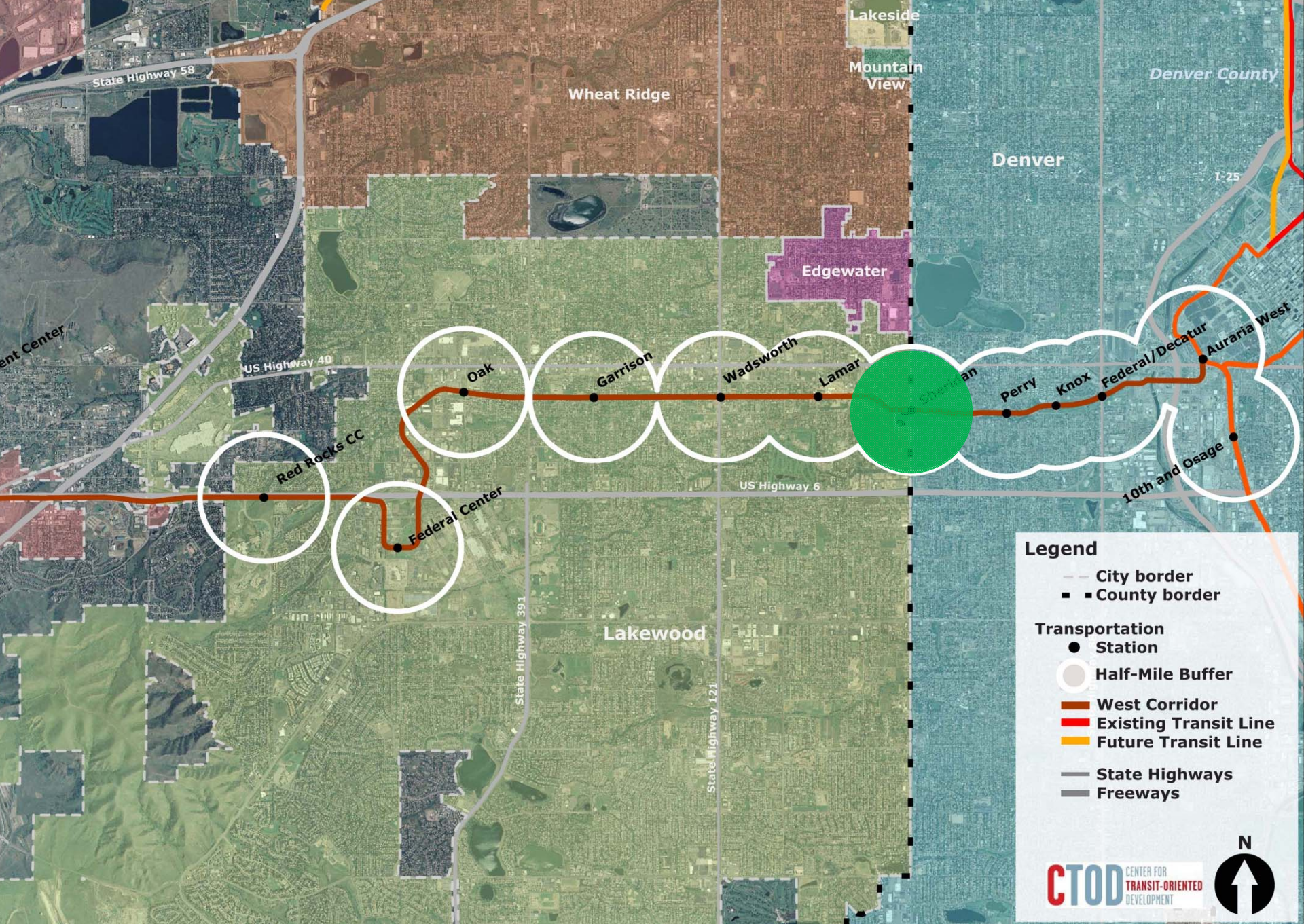
20-minute Transit-Oriented
Development (TOD) Neighborhood
Implementation Strategy

City of Lakewood, Colorado



SHERIDAN STATION CATALYTIC PROJECT | 20-MINUTE TOD NEIGHBORHOOD IMPLEMENTATION STRATEGY

Building the Sheridan Station 20 minute neighborhood project overview









Project Goals

Outreach Strategies

Go To Them!

- churches and schools
- neighborhood events
- focus groups
- provide good food
- door to door business surveys

Mutlicultural

- materials in Spanish and English
- interpreter at meetings
- door to door business surveys (with interpreter)

Make Community Events Fun!















Affordable Housing Opportunities

Jody Apartment Redevelopment

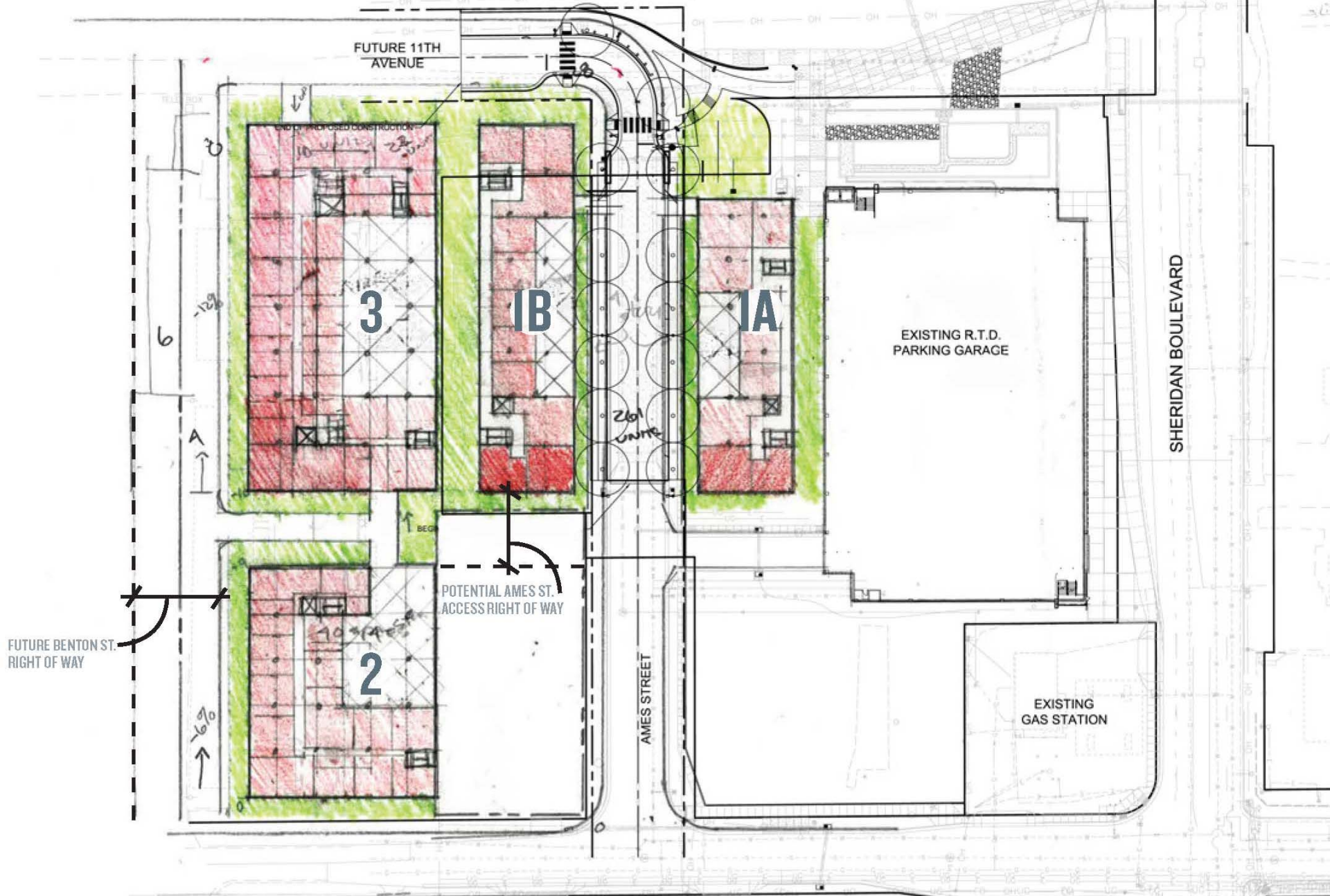
- joint effort with ULC and Newsed Community Development



Affordable Housing Opportunities



Jody Apartment Site Redevelopment



Jody Apartment Site Redevelopment



Employment | Access to Jobs



Employment/Job Access

Sidewalks from 6th to 17th Ave on Sheridan

- provide access to existing and future jobs



Improved Visibility and Identity of Station



Improved Visibility and Identity of Station



Celebrate the Two Cities & Neighborhoods



Trivia Question

When was the last time a trolley ran in this corridor?



Don Pass Collection



- Car No. 25: built by Denver's own Woeber Carriage Company
- Began service on February 17, 1911.
- 1 of 7 cars that provided passenger service on the Denver & Intermountain Interurban's 13-mile Denver-Lakewood-Golden line from 1911 to 1950.
- **With the proliferation of the automobile, a new bus system, and freeways, rail transit service was abandoned in 1950.**