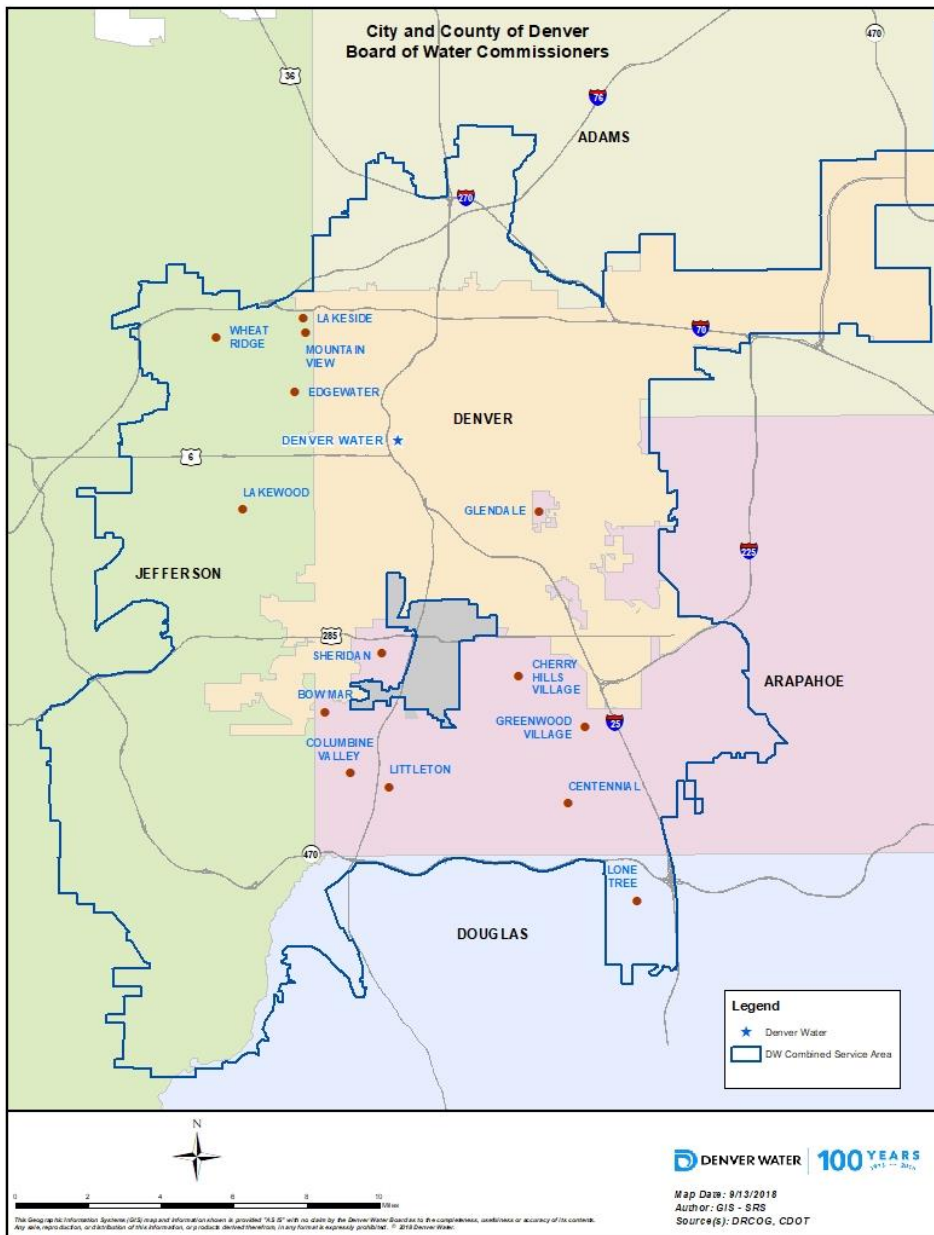


Water and Dense Development



Municipalities and counties served

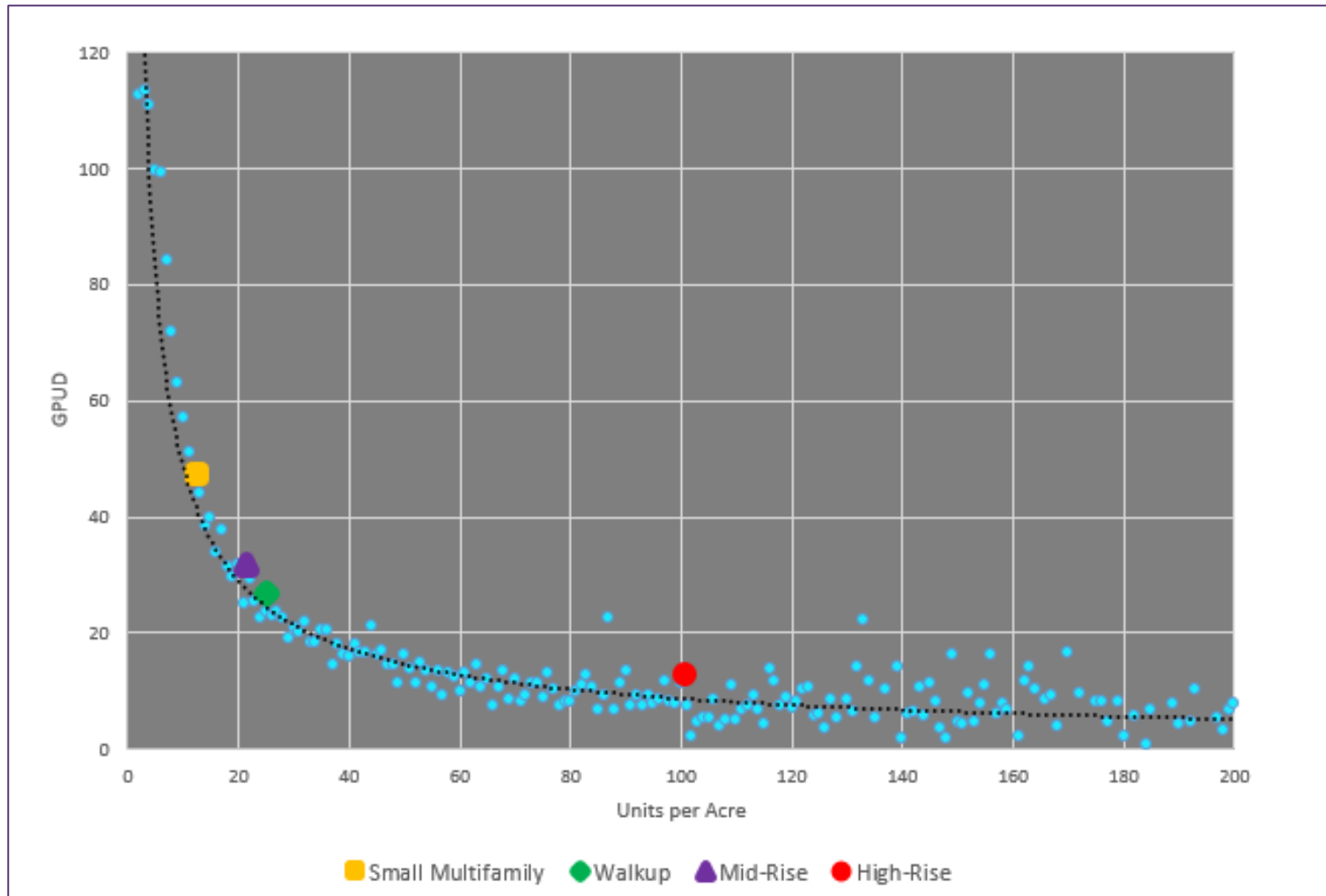
Denver Population: 700,000

Outside City Population: 700,000

Outside City Distributors: 65

Municipalities

Bow Mar	Lakeside
Centennial	Lakewood
Cherry Hills Village	Littleton
Columbine Valley	Lone Tree
Denver	Mountain View
Edgewater	Sheridan
Glendale	Wheat Ridge
Greenwood Village	



Outdoor use: Multifamily density and average gallons per unit per day

Same density, different look and impacts



50 households per acre



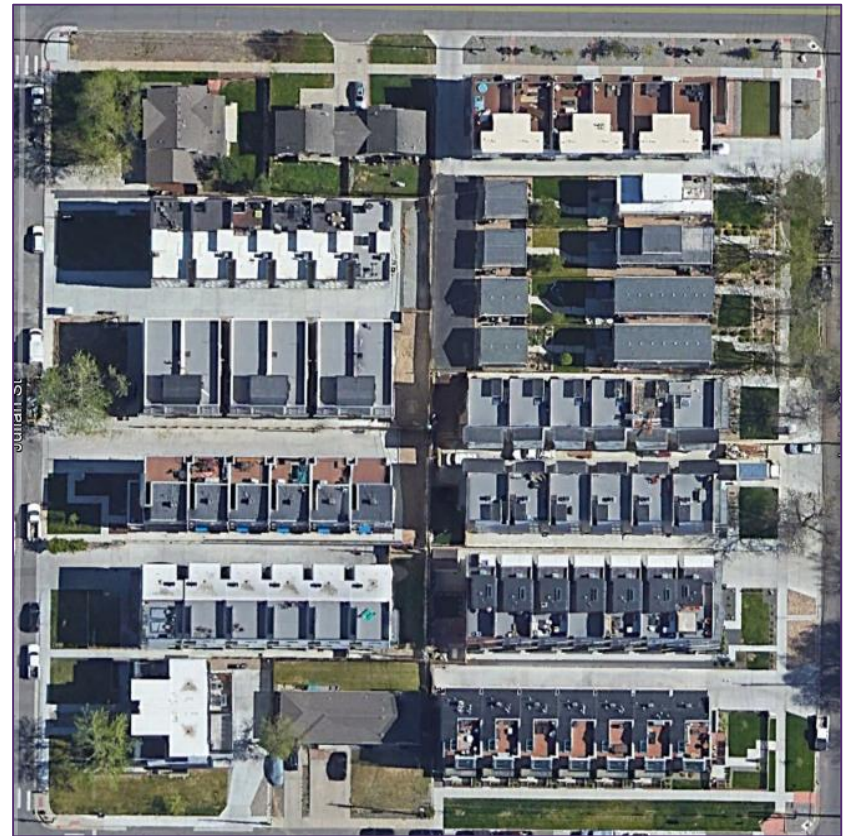
50 households per acre

Rapid land-use change

Before

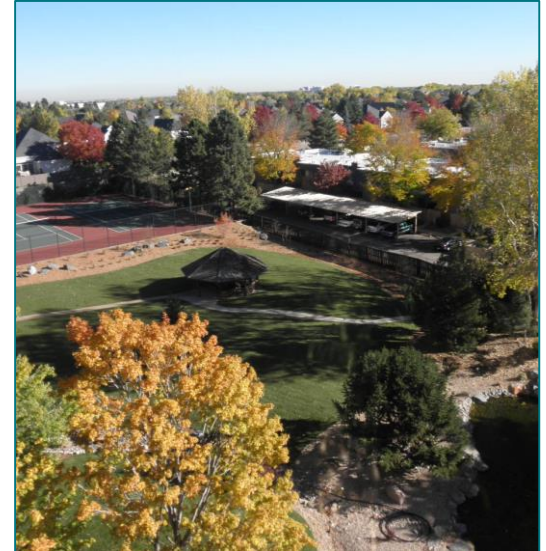


Current

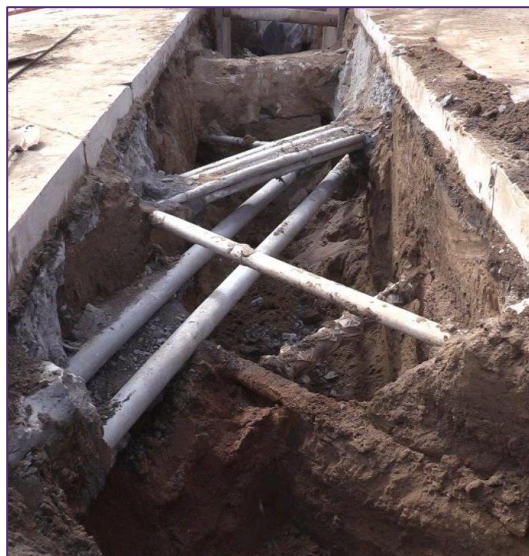


Scale and approaches

- State-wide, service area, Denver proper
- Regulatory, cooperative, incentive-based



Challenges and opportunities



Service delivery



Green infrastructure and climate



Timing and life span of developments

Takeaways

- Scale, boundary and authority pose challenges
- Metro area is becoming more dense
- Water use changes with density, generally lower GPCD
 - Fixture efficiencies
 - Landscapes
- Density is not necessarily *water efficient*
- Guidance to narrow focus of approaches, scale, challenges and opportunities