



IMPOSSIBLE

**Fostering opportunity
through planning.**

***Creating Inclusive
Communities***

Lisa Corrado, Long Range Planning Manager
City of Henderson

John Tapogna, President
EcoNorthwest

A vertical wooden ladder with several rungs, leaning against a light-colored, textured wall. The ladder is positioned on the left side of the frame, extending from the bottom to the top.

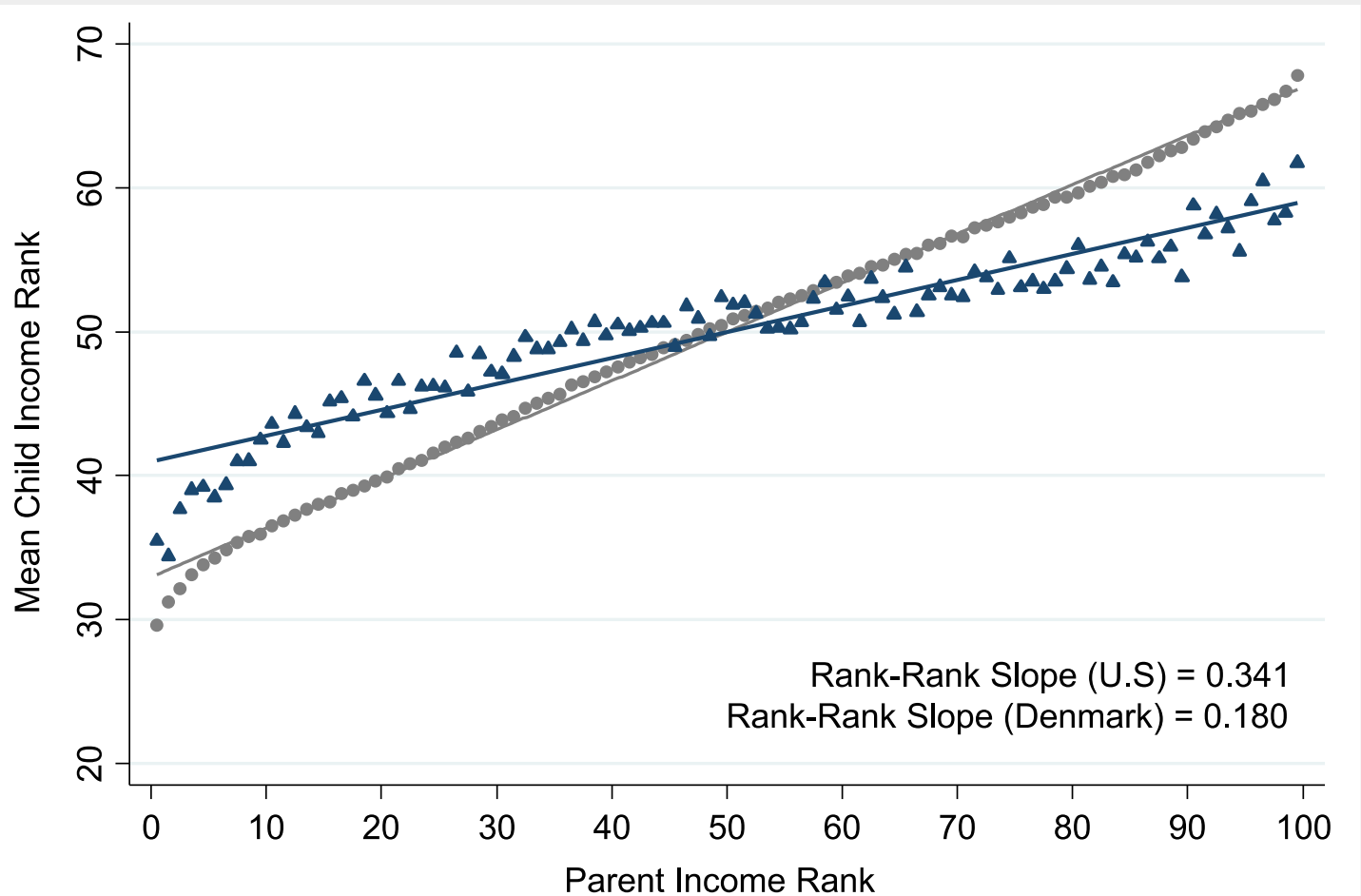
Overview

- Recent research on economic mobility—place matters!
- Where is the land of opportunity?
- How does a place affect earnings?
- Case study—how a community in Southern Nevada has worked to influence these factors.
- Why is diversity and inclusion important to economic mobility and what can planners do to support it?



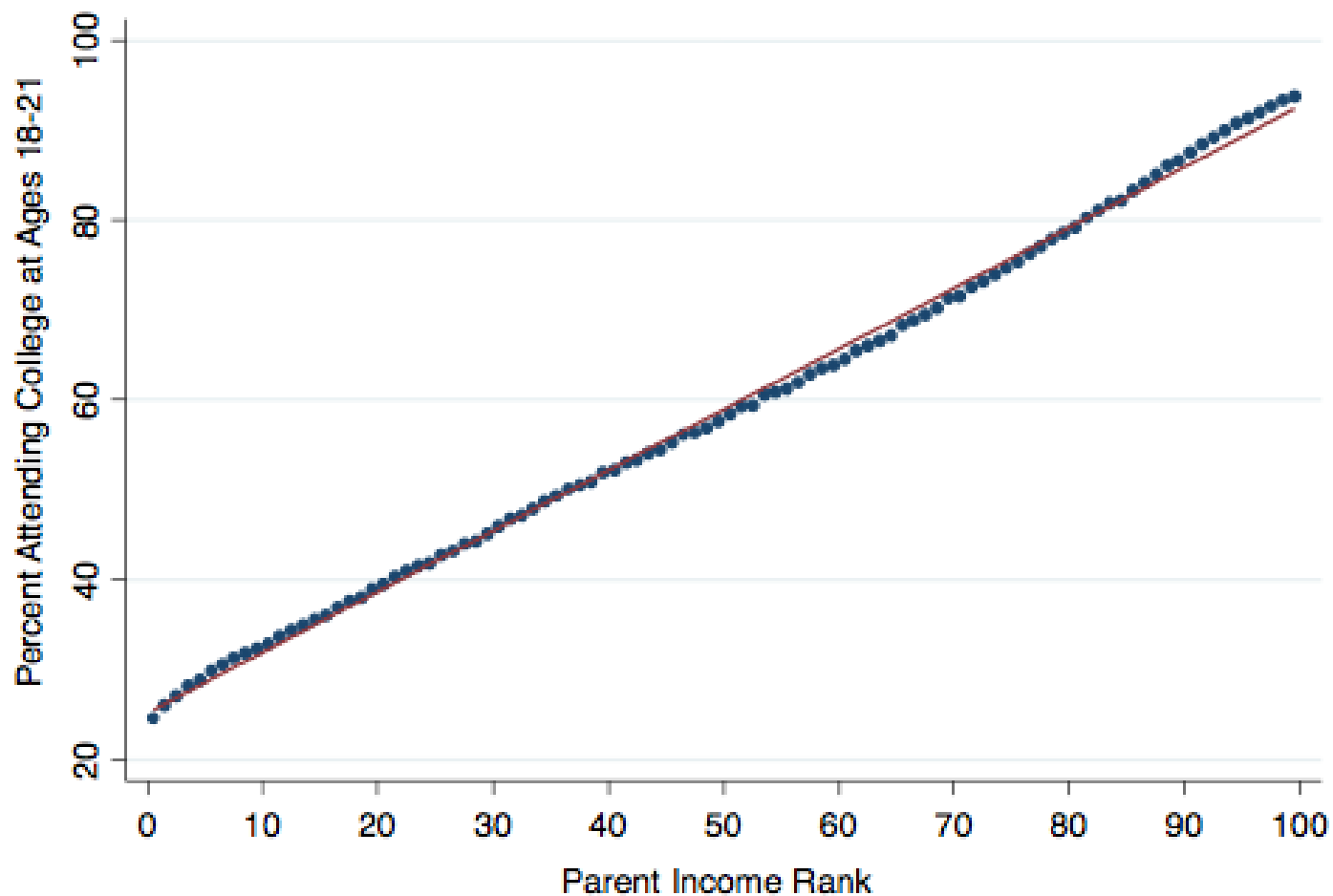
Where is the land of
opportunity?

Parent-Child Income Ranks, US v. Denmark



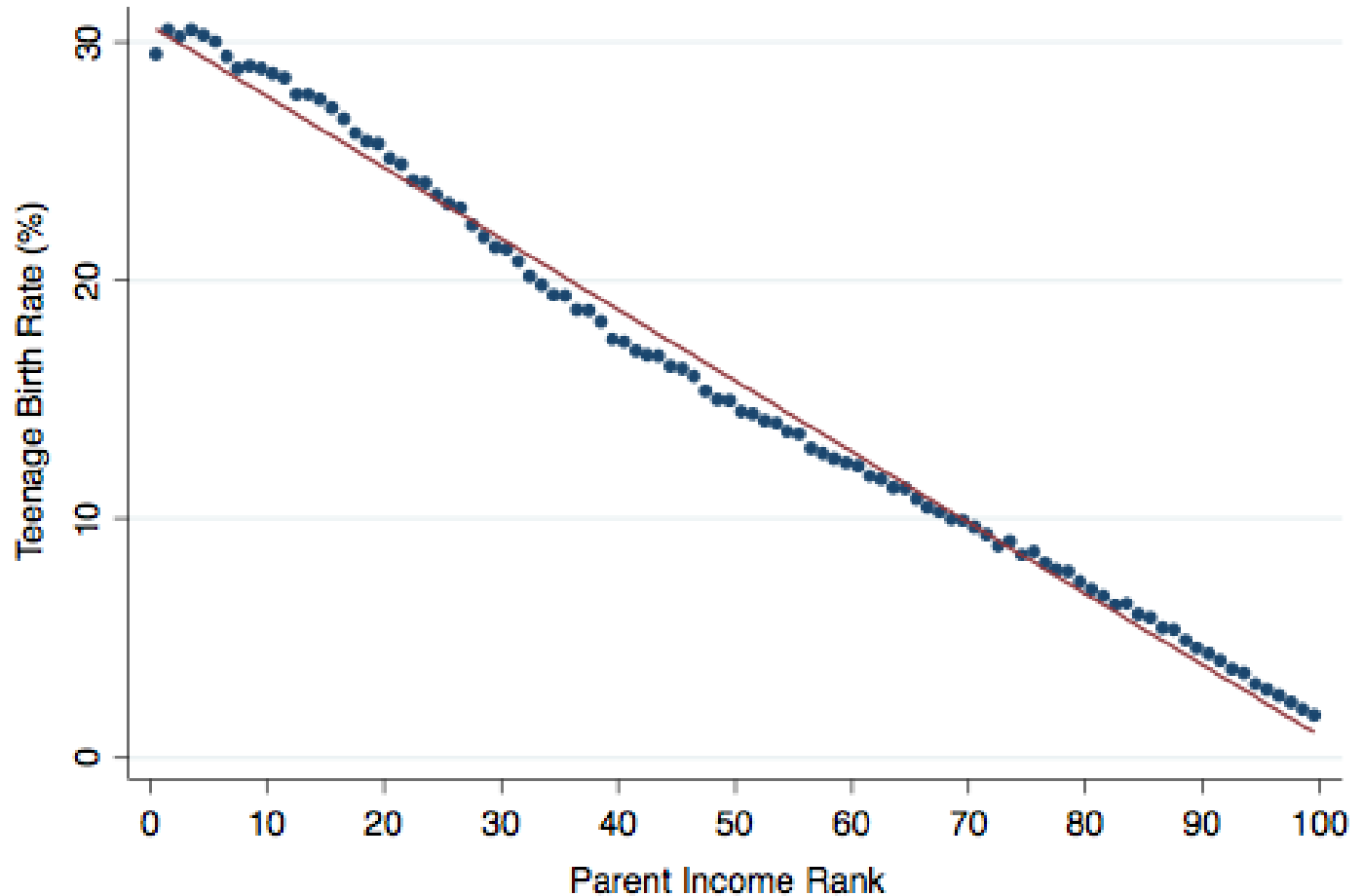
Source: Chetty et al. *Where is the land of opportunity?*

Parent Income Rank v. Child's College Attendance



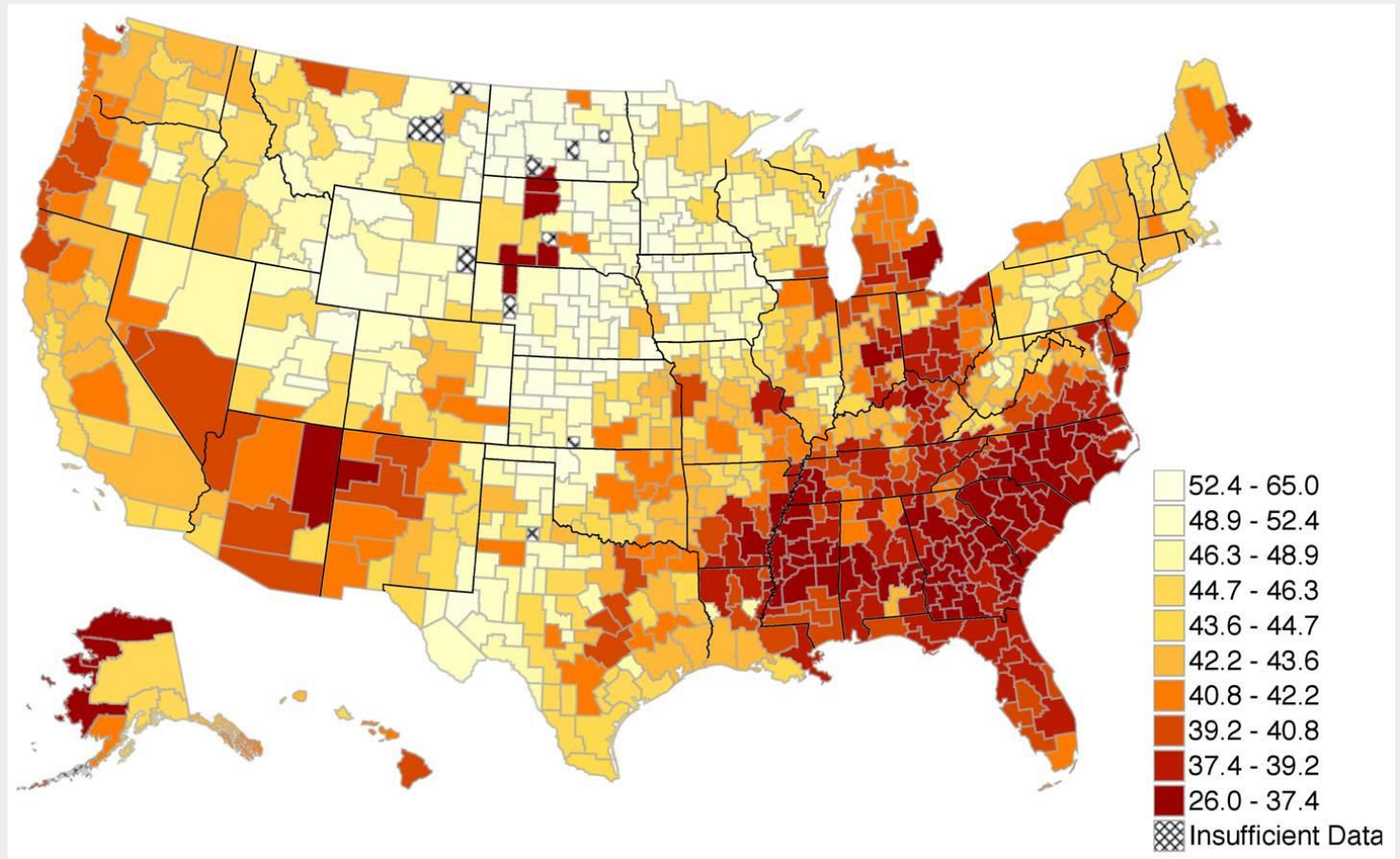
Source: Chetty et al. *Where is the land of opportunity?*

Parent Income Rank v. Teenage Birth Rate



Source: Chetty et al. *Where is the land of opportunity?*

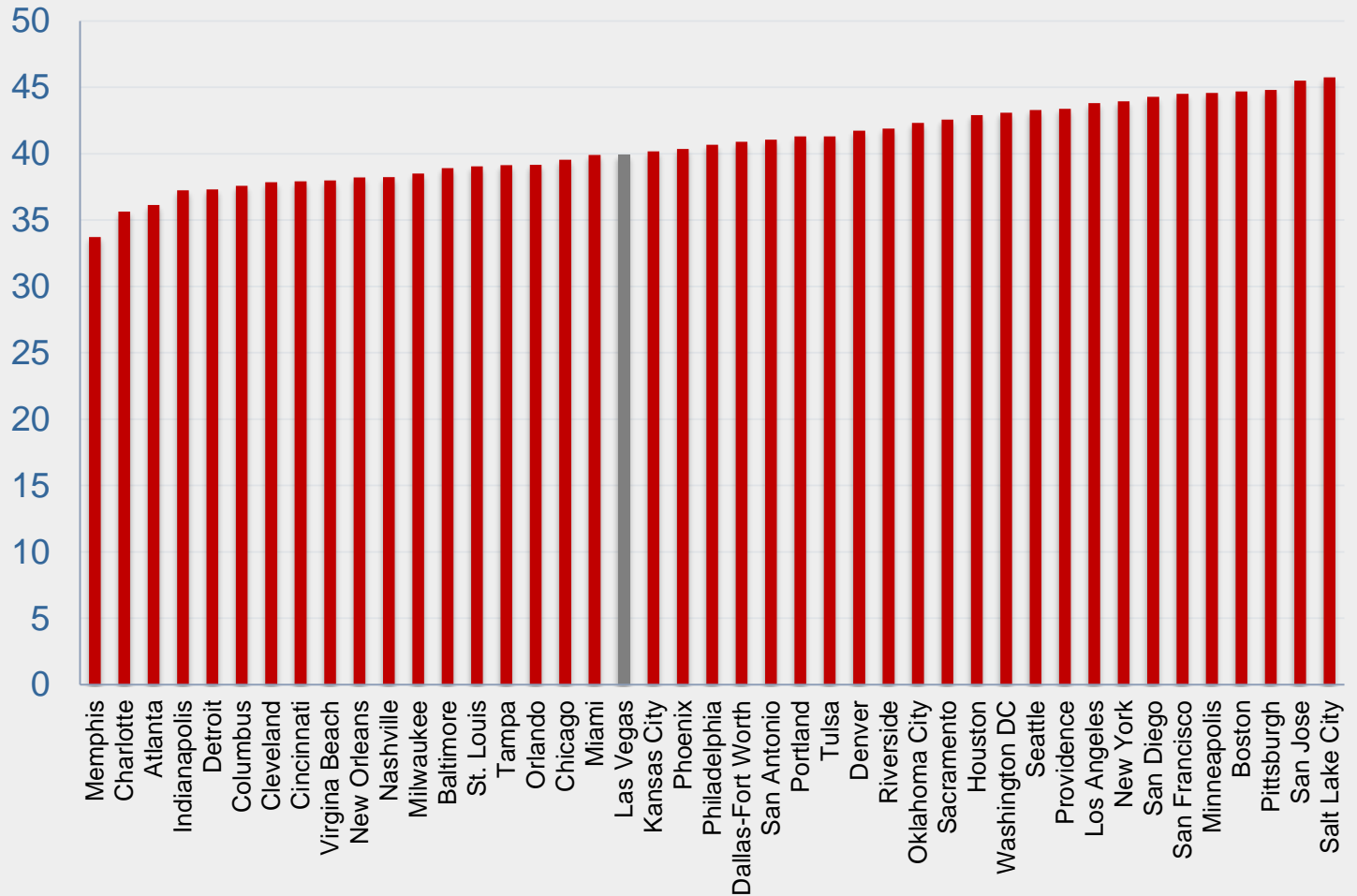
Geography of Upward Mobility



Source: Chetty et al. *Where is the land of opportunity?*

Geography of Upward Mobility

Expected Income Percentile Rank of a Child Whose Parents Were at the 25th Income Percentile

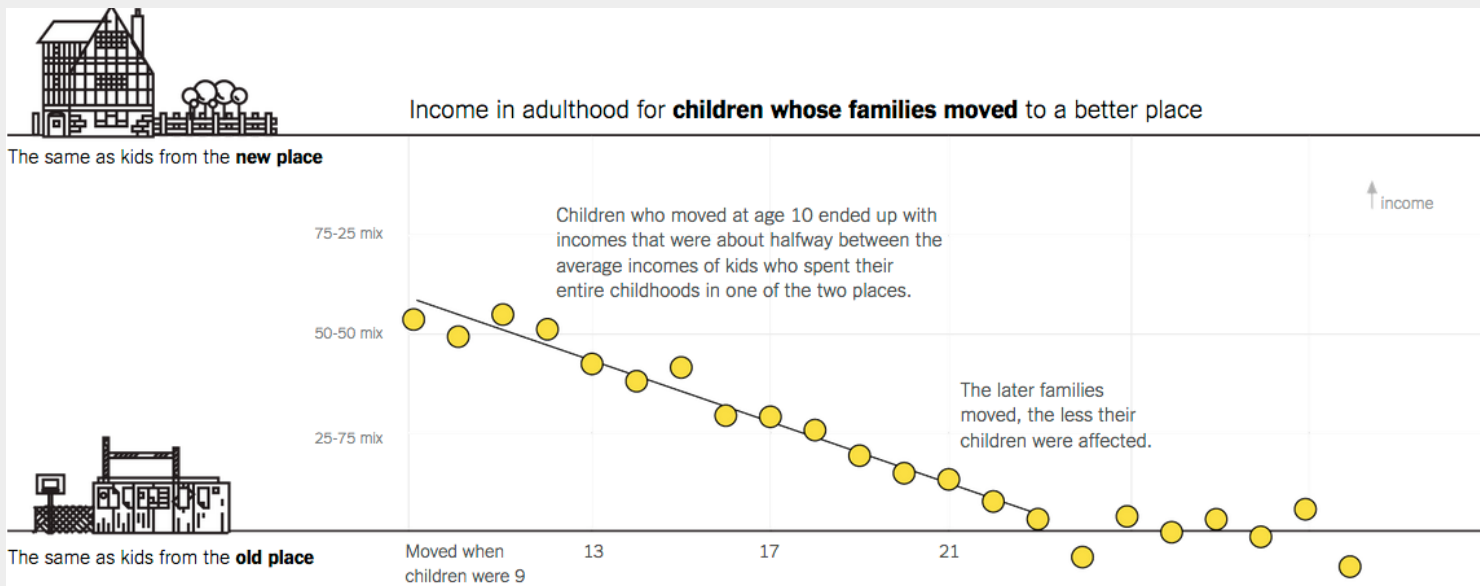


Source: Chetty et al. *Where is the land of opportunity?*

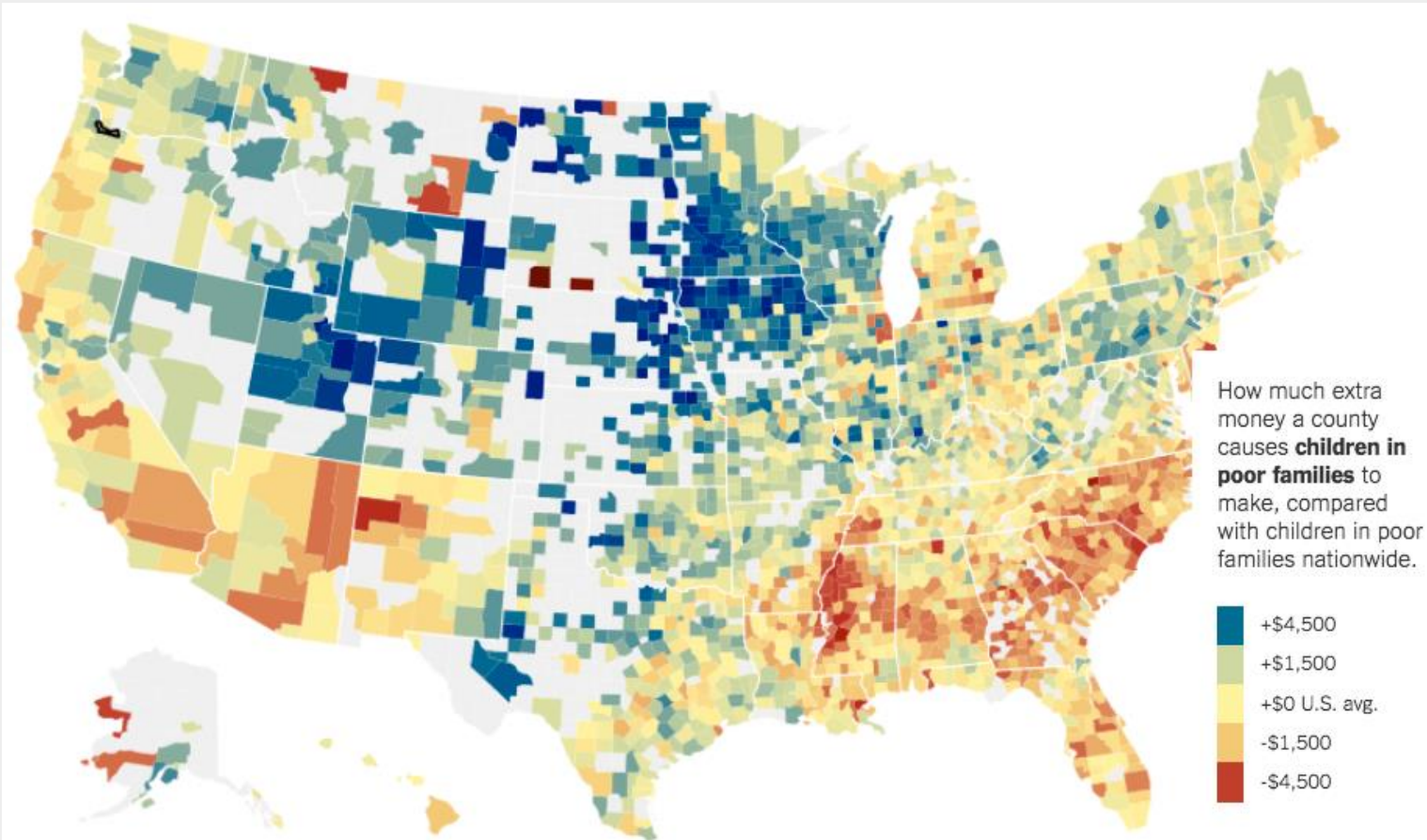
A vertical wooden ladder with rungs, leaning against a textured, light-colored wall. The ladder is positioned on the left side of the frame, extending from the bottom to the top. The wall has a rough, mottled appearance.

How does place affect
earnings?

How does place affect earnings?

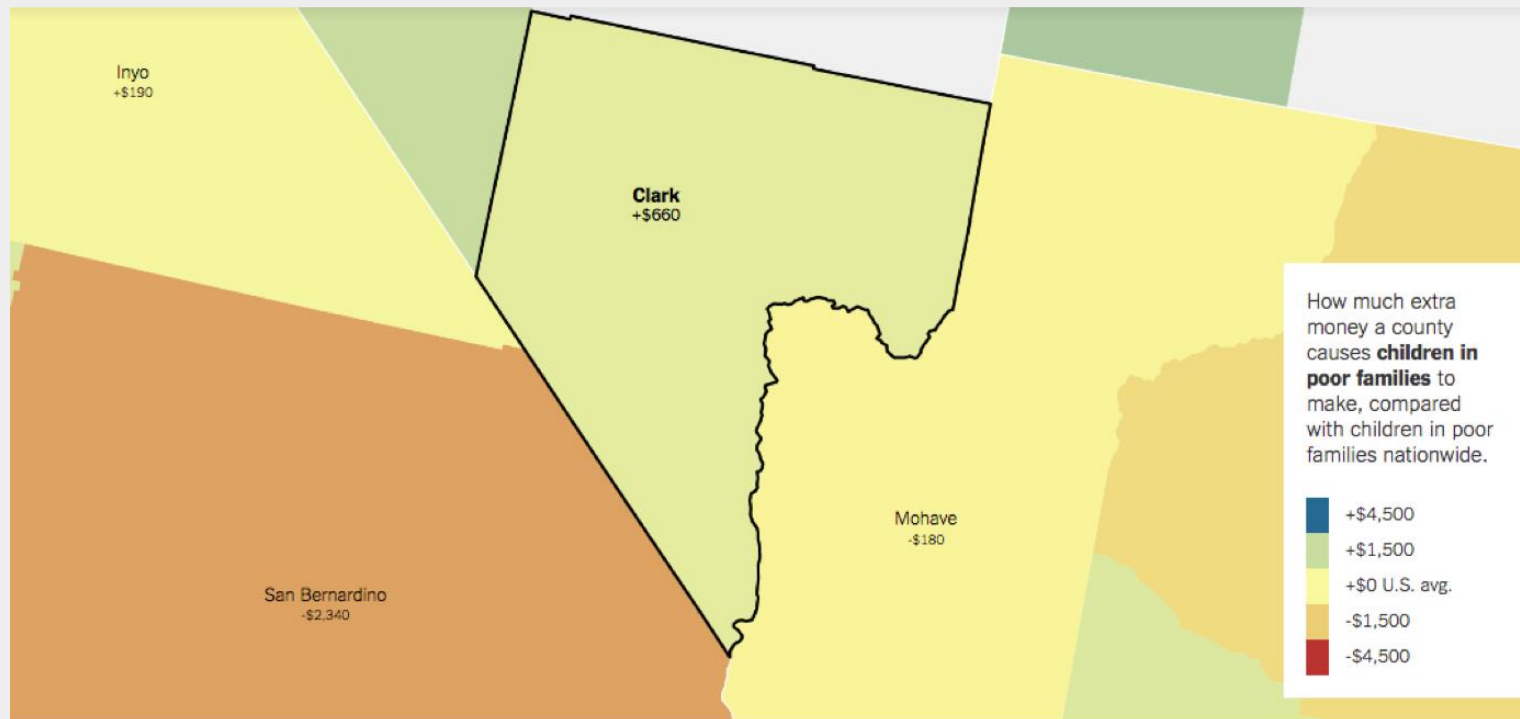


How does place affect earnings?



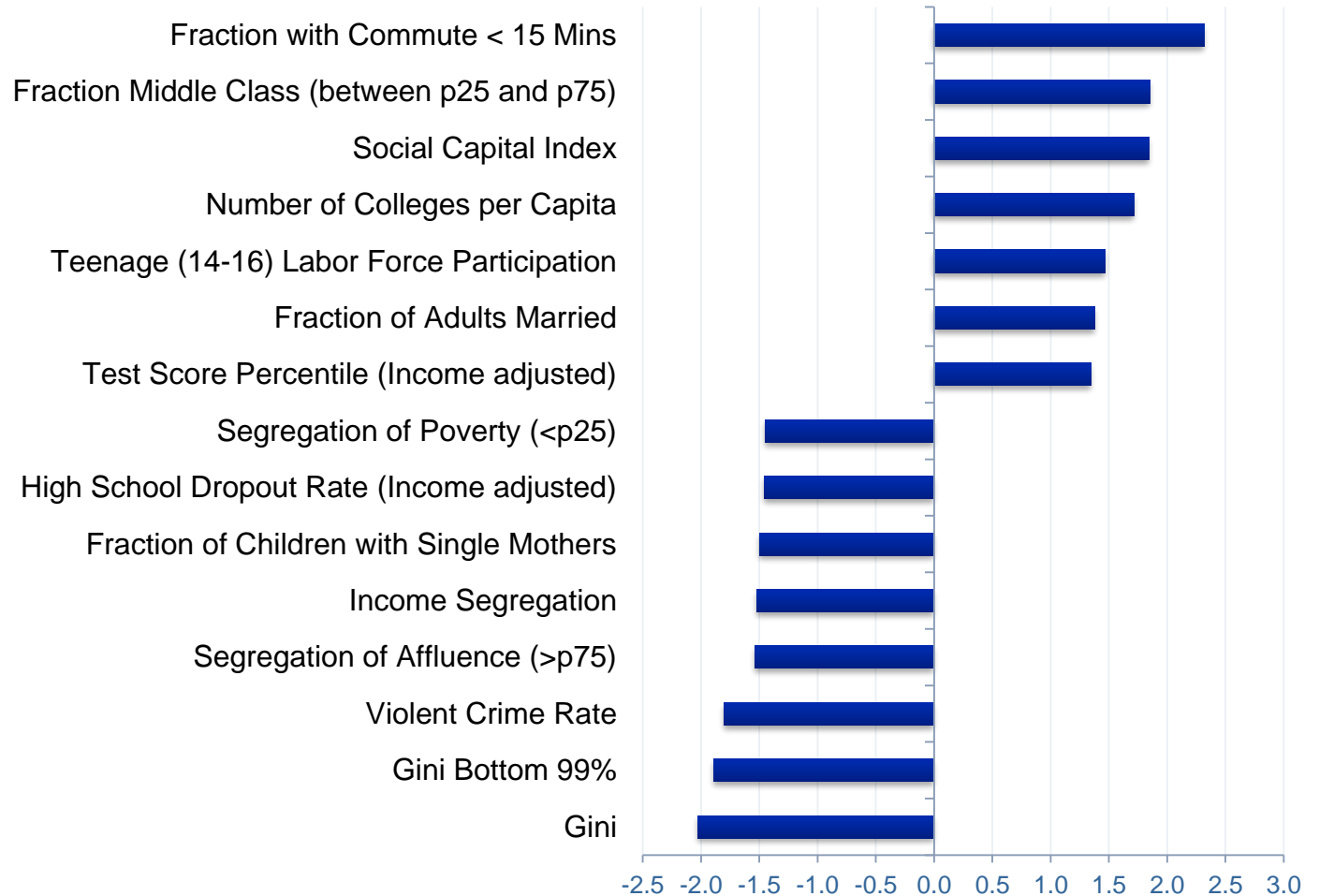
http://www.nytimes.com/2015/05/04/upshot/an-atlas-of-upward-mobility-shows-paths-out-of-poverty.html?_r=0

How does place affect earnings?



http://www.nytimes.com/2015/05/04/upshot/an-atlas-of-upward-mobility-shows-paths-out-of-poverty.html?_r=0

Factors that affect children

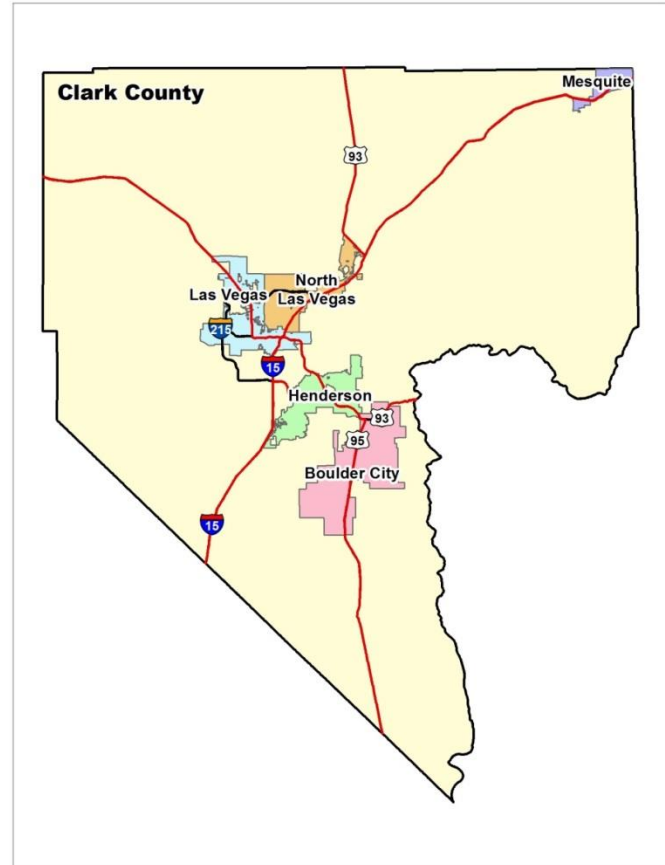
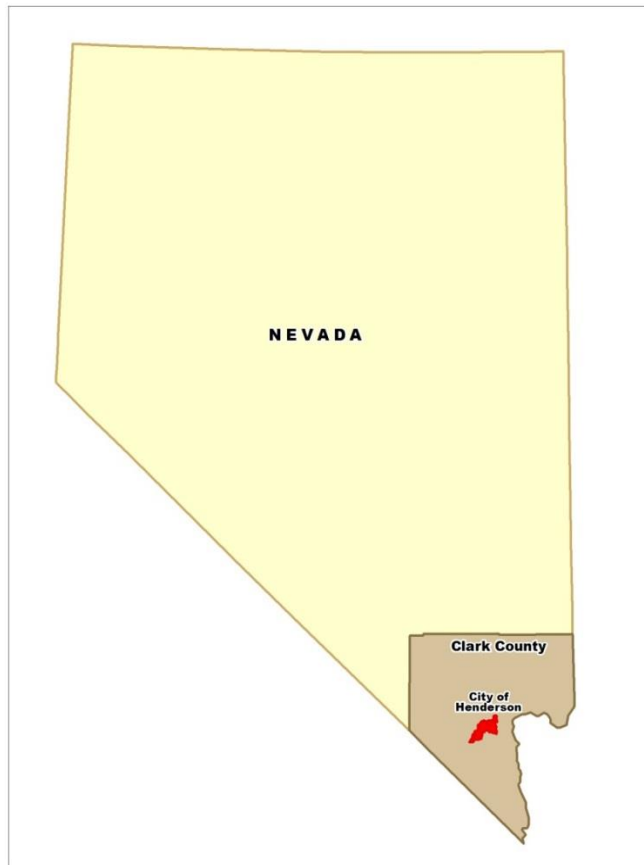


Source: Chetty et al. (2015) *The Impacts of Neighborhoods on Intergenerational Mobility*. Table XII. Column 4; Y-axis represents the relative impact on mobility for each 1 standard change in the covariate.

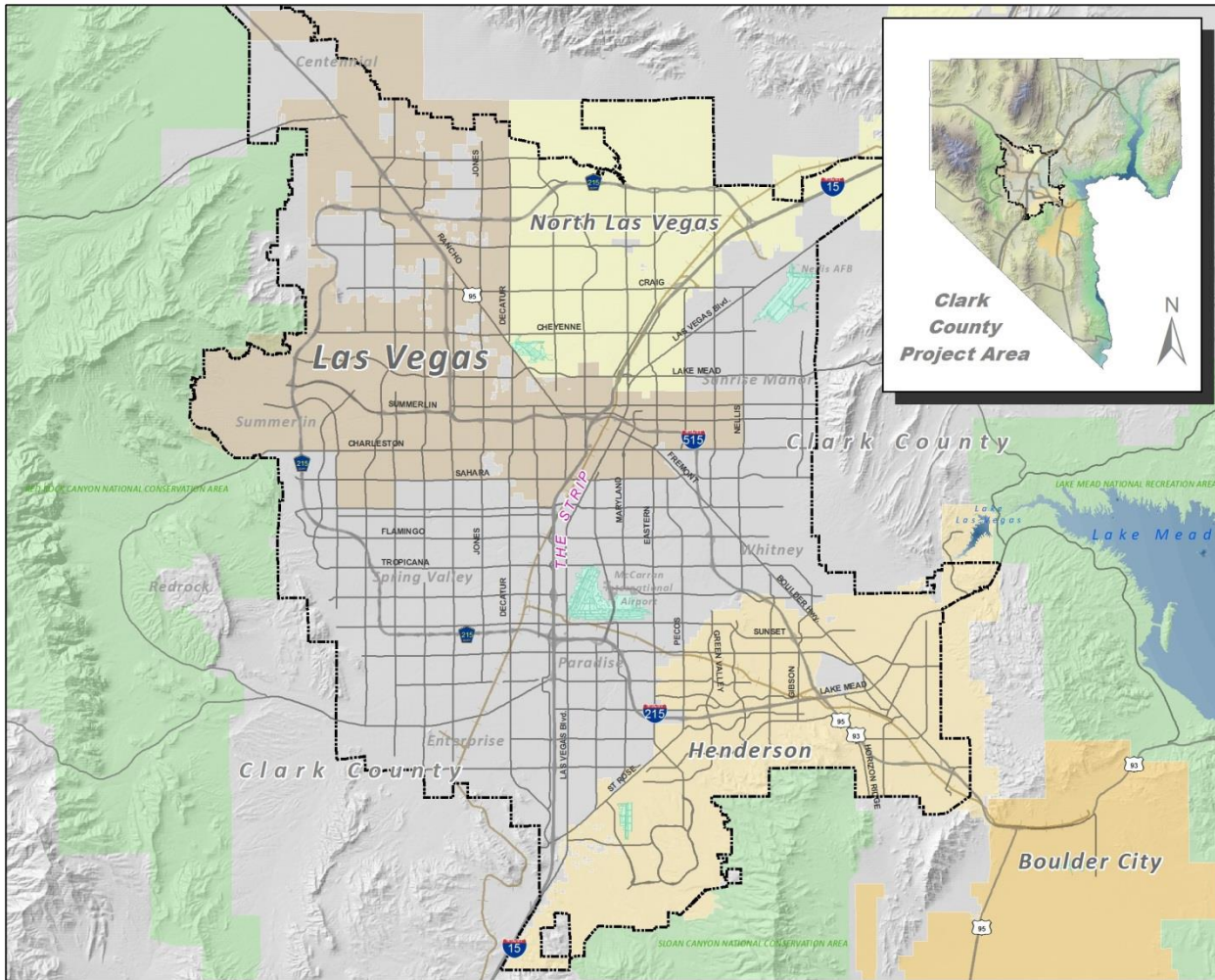


Case Study: Southern Nevada

Clark County, NV



Las Vegas Valley



Southern Nevada Region

Transportation Network

- Highway
- Street
- Railroad



Urban Boundary



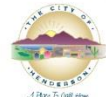
National Recreation & Conservation Areas

February 22, 2017

Source(s): City of Henderson Community Development and Services Department, City of Henderson Public Works Department, Clark County Assessor's Office, and Clark County Geographic Information Systems Management Office, Bureau of Land Management

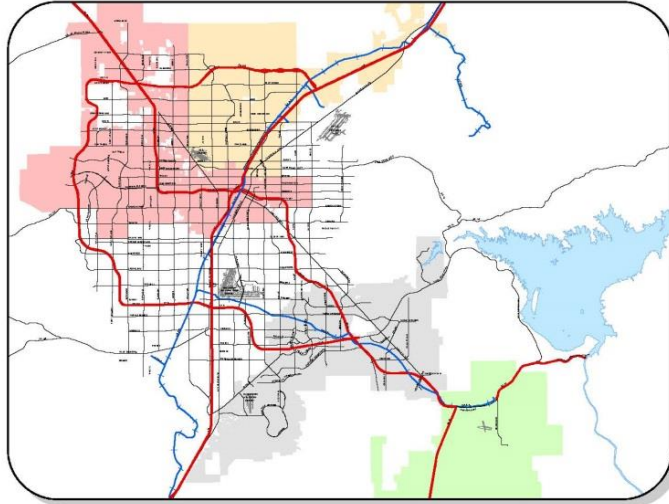
Note: This map is offered as a general reference guide only. Neither warranty of accuracy is intended nor should any be assumed.

Community Development & Services Department
City of Henderson
240 Water Street
P.O. Box 95050
Henderson, NV 89009-5050
Tel. (702) 267-1500
www.cityofhenderson.com



p:\projects\cd\lr\2017\presentations

Henderson, NV



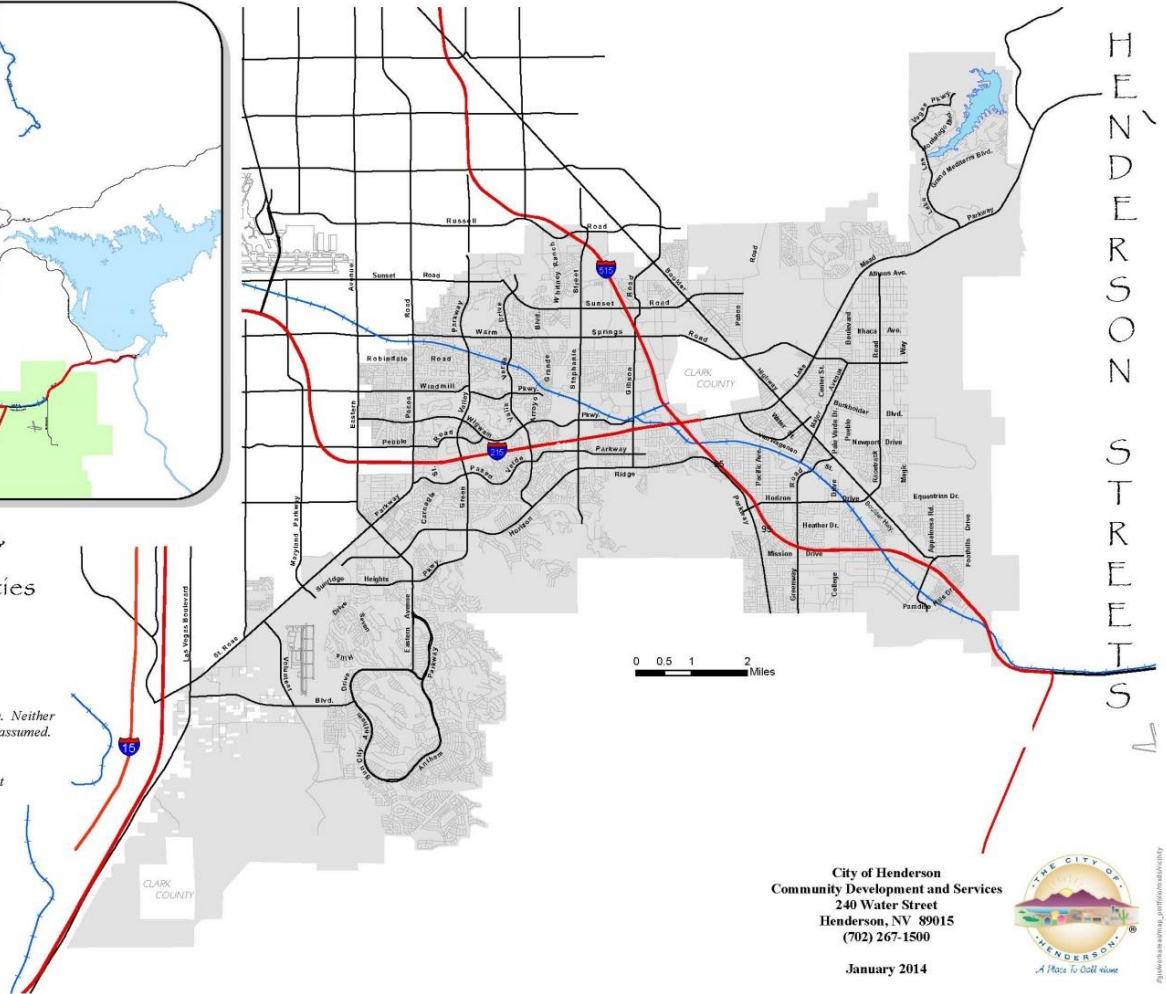
City of Henderson & Surrounding Communities



Maps available on the web:
<http://www.cityofhenderson.com/>

This map is offered as a general reference guide only. Neither warranty of accuracy is intended nor should any be assumed.

Based on Projected Coordinate System:
 NAD83, StatePlane NV East FIPS 2701 Feet



City of Henderson
 Community Development and Services
 240 Water Street
 Henderson, NV 89015
 (702) 267-1500

January 2014



Henderson Context

- Population: **291,432**
- Median Income: **\$63,830**
- Adults with a HS diploma: **92.7%**
- Adults with a Bachelor's degree: **30.9%**
- Median age is **~41**
- Families with children: **56%**



School District context


- 5th largest school district in the U.S.
- Overall low graduation rates (71%)
- Overall low student achievement

CCSD School Star Ratings 2014



Source: Applied Analysis. Note: Not all schools are rated.



A vertical wooden ladder with rungs, leaning against a light-colored wall. The ladder is positioned on the left side of the image, extending from the bottom to the top.

Planning Tools & Interventions to Support Economic Mobility:

***Transportation, Social
Capital, Housing &
Education***

Transportation: Fraction with Commute Time <15 min



Social Capital, Integration: Demographic analysis



Pittman Neighborhood Revitalization Plan

JUST THE FACTS

Who The City of Henderson was the only Nevada city chosen to participate in the Invest Health program and the Pittman Neighborhood was identified as the focus of the planning effort.

What The Pittman Neighborhood Revitalization project aims to explore resident concerns and priorities related to health and find creative solutions in an actionable plan to improve the community and respond to resident needs by:

- Focusing on neighborhood priorities
- Gathering neighborhood preferences on potential action items

When Now through January 2018


Where Focused on the Pittman Neighborhood

MORE INFO

The Pittman Neighborhood Revitalization effort is part of the Invest Health program. Invest Health is a national program designed to improve cities through better health. The objective is for local areas to create an action plan that will identify ways to improve access to healthy food and preventive care, improve infrastructure like roads, parks and trails, and increase housing choices.

The Invest Health Initiative focuses on key topics like:

- Health & Food
- Housing Quality, Stability & Availability
- Safety
- Education & Workforce
- Transportation



Plan de Revitalización del Vecindario de Pittman

SOLAMENTE LOS HECHOS

Quien La Ciudad de Henderson fue la única ciudad de Nevada escogida para participar en el programa de Invierte en la Salud. El vecindario de Pittman fue identificado como beneficiario de este esfuerzo urbano.

Que El proyecto de Revitalización del Vecindario de Pittman tiene como objetivo explorar las preocupaciones y prioridades de los habitantes relacionados a su salud. Así como también, encontrar soluciones creativas en un plan de acción que mejore el vecindario y responda a las necesidades de sus habitantes a través de:

- Enfocándose en las prioridades del vecindario
- Recopilando las preferencias del vecindario sobre posibles acciones

Cuándo A partir de ahora hasta Enero 2018


Dónde Enfocado en el Vecindario de Pittman

MÁS INFORMACIÓN

El esfuerzo de Revitalización del Vecindario de Pittman forma parte del programa de Invierte en la Salud. Invierte en la Salud es un programa nacional creado para mejorar la salud de las ciudades a través de una buena salud. El objetivo del programa es que los participantes desarrollen un plan de acción que identifique maneras de mejorar el acceso a una alimentación saludable y cuidados de salud preventivos, mejorar la infraestructura incluyendo calles, parques y senderos, e incrementar las opciones de vivienda.

La iniciativa de Invierte en la Salud se enfoca en temas importantes como:

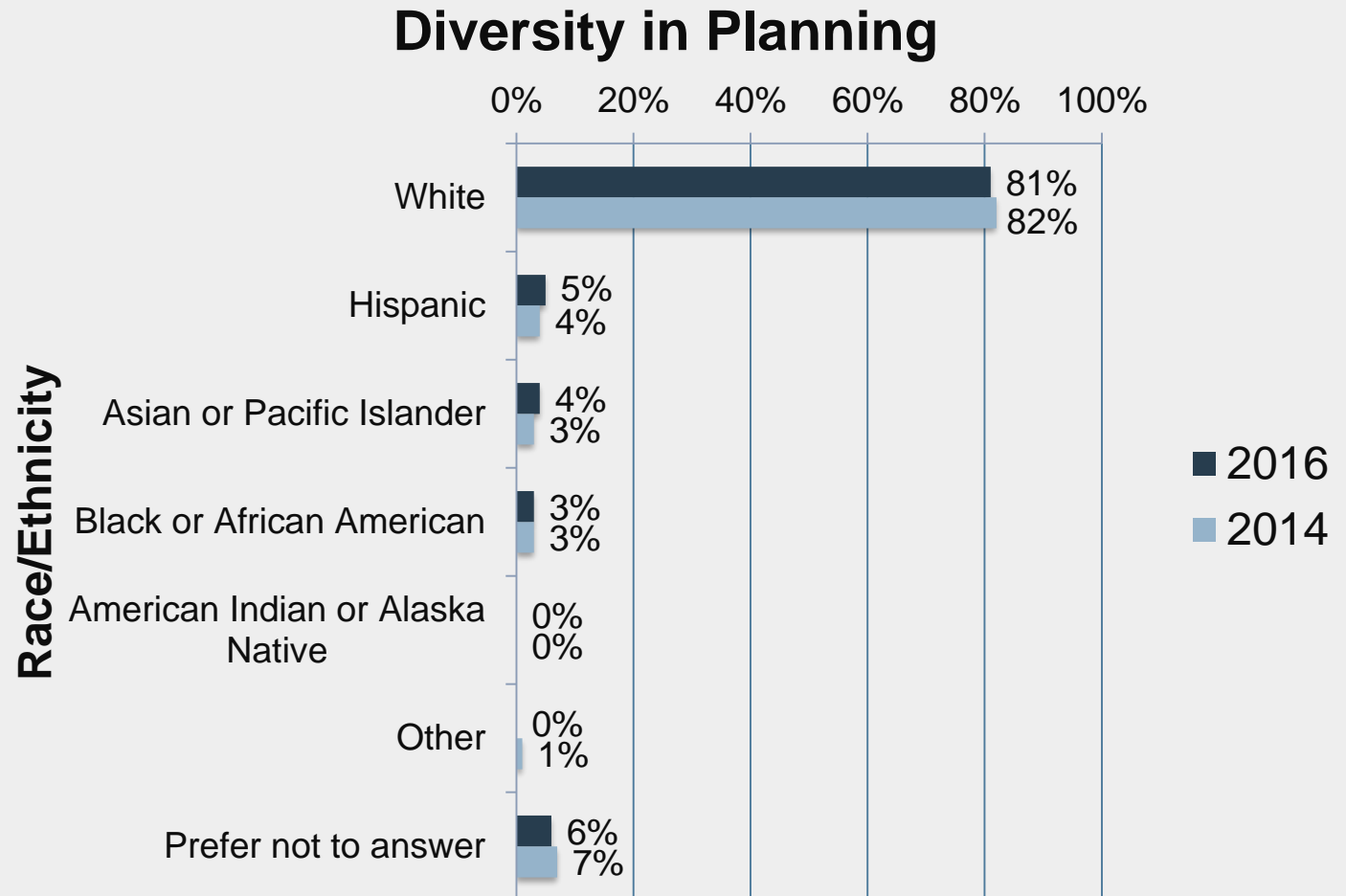
- Salud & Alimentación
- Calidad, Estabilidad y Disponibilidad de Vivienda
- Seguridad
- Educación y Fuerza de Trabajo
- Transporte



Social Capital, Integration: Working as a region



Social Capital, Integration: Enhance cross-cultural competence



Source: APA/AICP Planners Salary Survey Planner Characteristics.

Social Capital, Integration: Foster a welcoming community



Social Capital, Integration: Housing

- Regional Analysis of Impediments
Implementation



Education; student performance





QUESTIONS?



IMPOSSIBLE

Contact info:

John Tapogna

tapogna@econw.com

Lisa Corrado

Lisa.Corrado@cityofhenderson.com