

# CHOOSING TOOLS FOR CREATING SUSTAINABLE NEIGHBORHOODS

Strategies, Scales and Examples

# Welcome!



- What we are...
  - ▣ Sustainable neighborhood tools
  - ▣ Case studies
  - ▣ Application of tools
  
- What we are not...
  - ▣ A mobile tour
  - ▣ New construction focused

# Workshop Outline



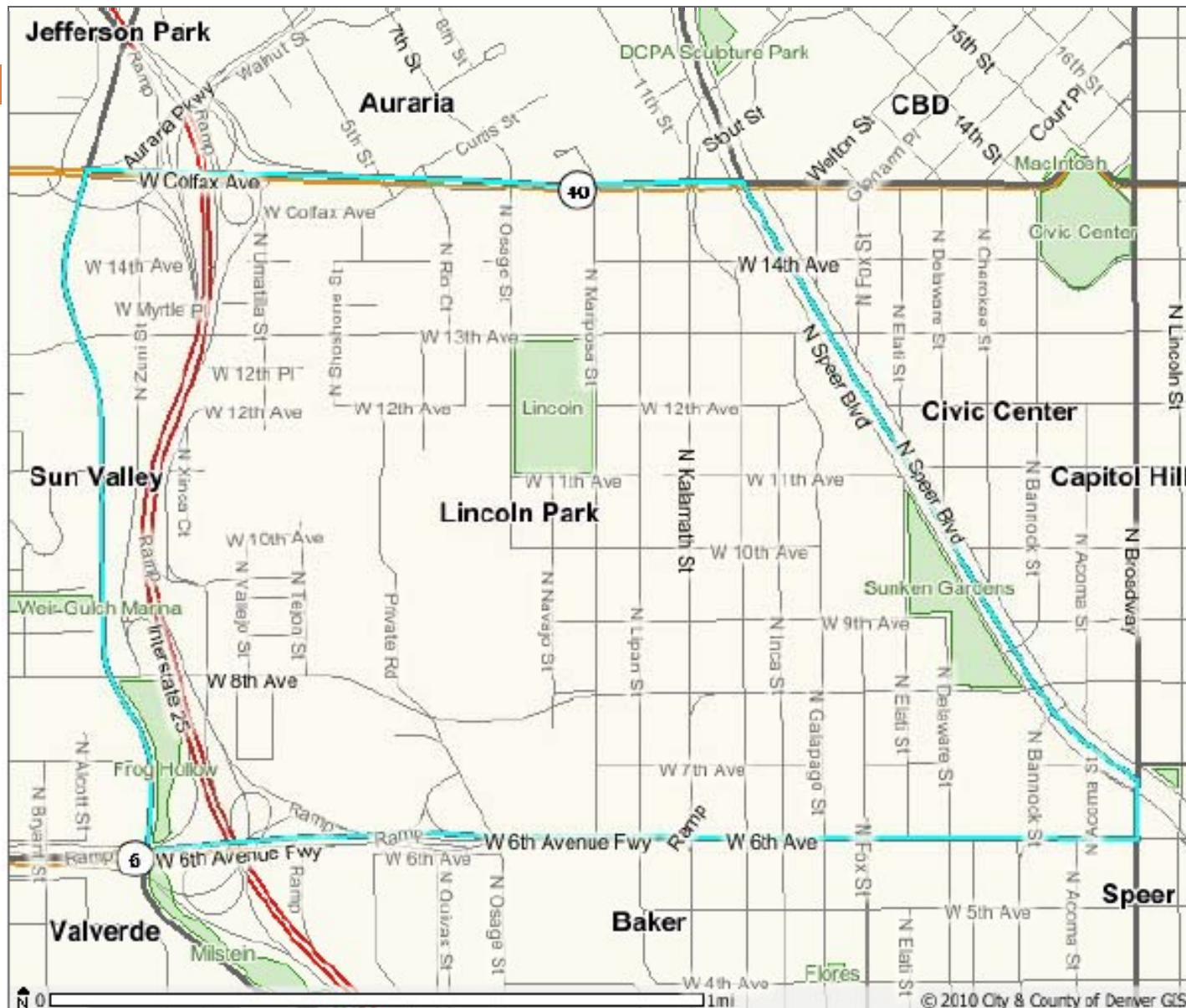
- Introduce local example
- LEED-ND assessment and application for existing neighborhoods
- Living City Block
- Main Street Energy Initiative
- Breakout Groups
- Report out

# Goals/Outcomes



- Learn about three tools that can be used to revitalize and re-energize existing neighborhoods
- Put the tool of interest to you into practice with local example

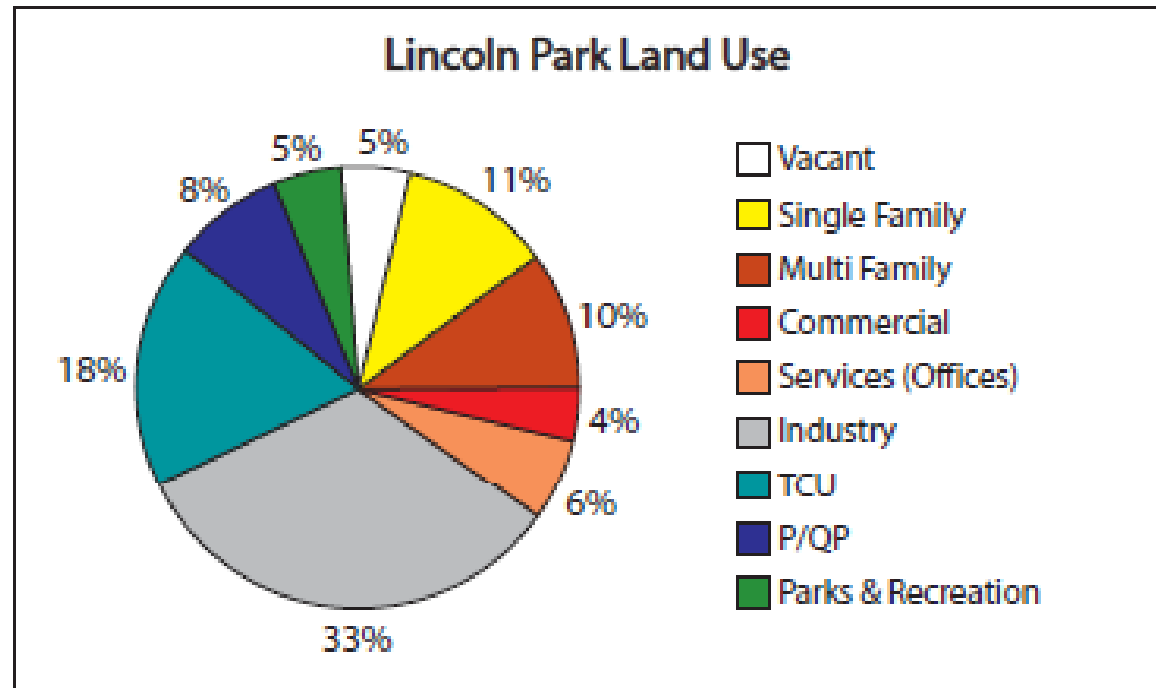
# La Alma/ Lincoln Park Neighborhood



- Neighborhood Boundaries
- Parks

# Land Use (2006)

- Industrial
- Transportation
- Residential

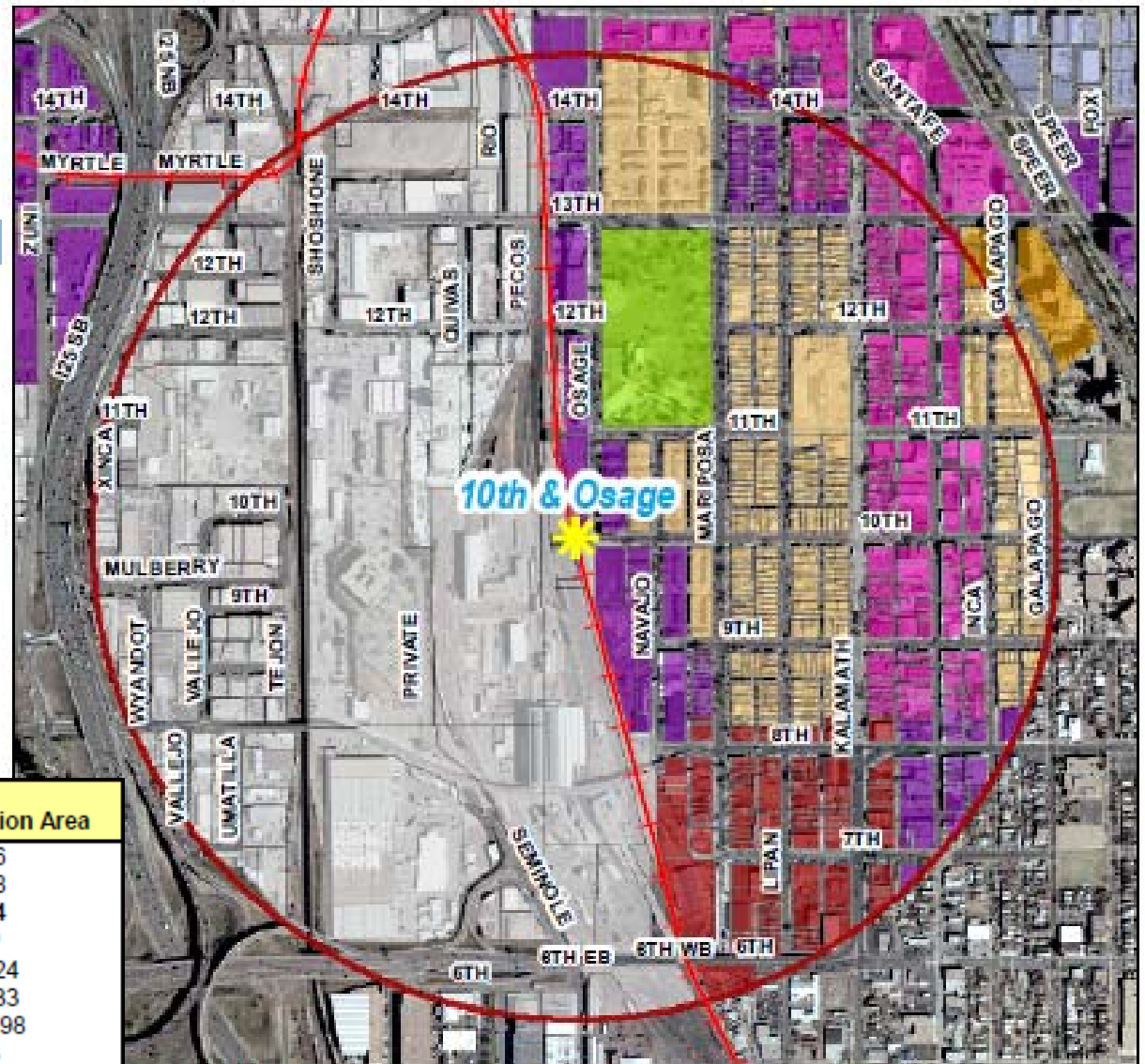


# 1/2 Mile Walk

□ Mixed-Use and Residential

□ Neighborhood Statistics

2006 Market Data	1/2-Mile Station Area
Population	3,706
Employment	5,828
Total Population (Day & Night)	9,534
Total Population/Acre	19.0
Median Household Income	\$24,624
Per Capita Income	\$13,833
Median Home Value	\$161,198
Median Age	27.8
Community Tapestry™ Market Segments	City Dimensions Metro Renters City Commons

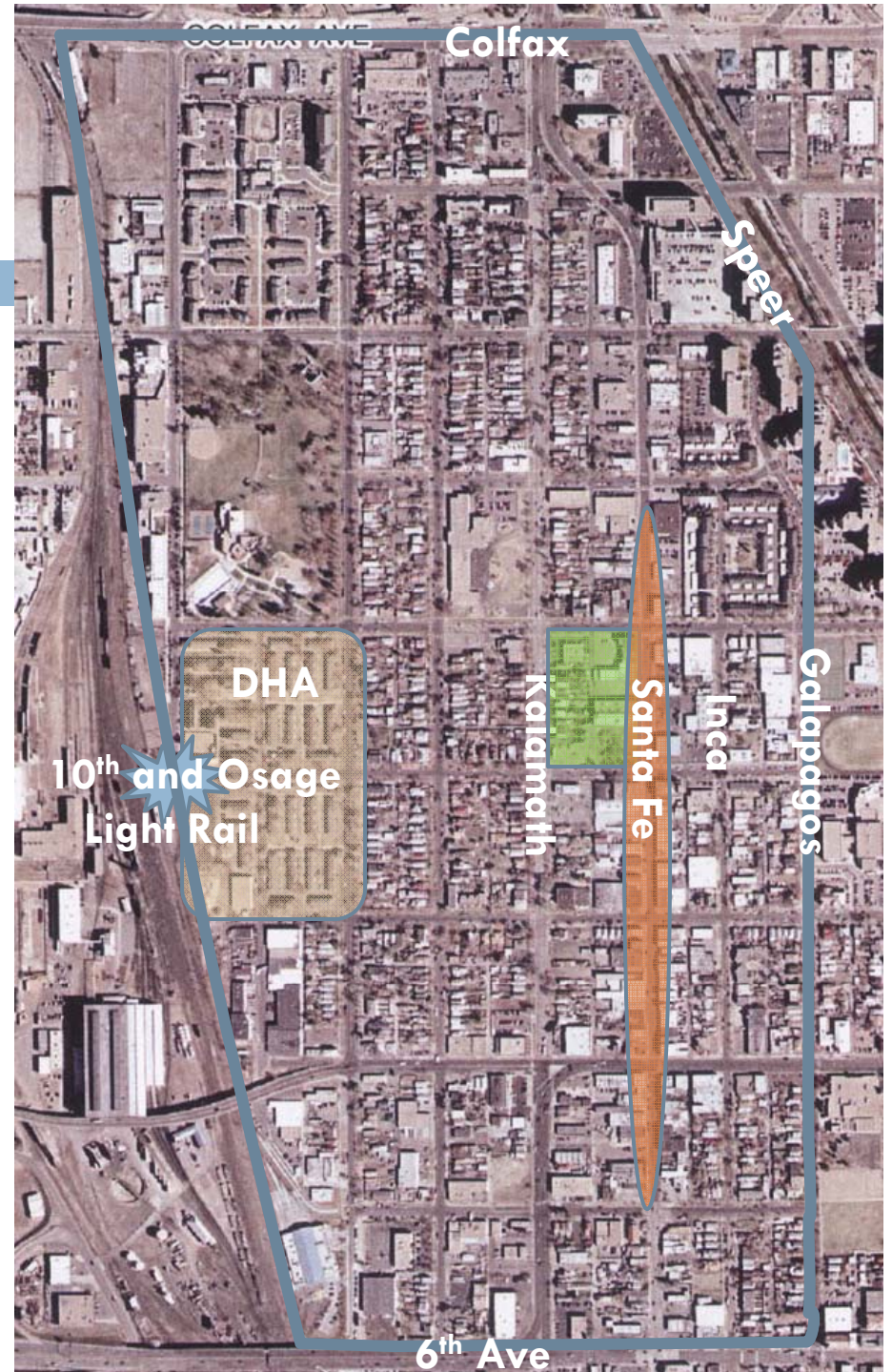




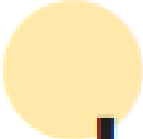
# Study Area

□ Boundaries

□ Nodes



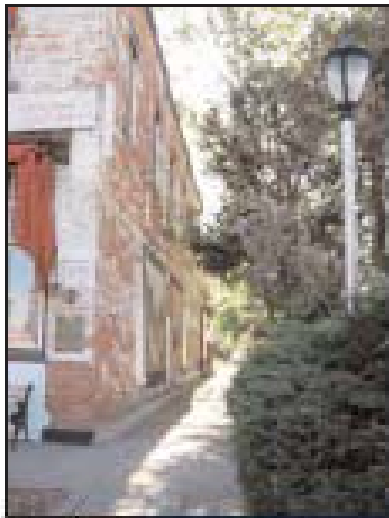




# LINCOLN PARK NEIGHBORHOOD ASSESSMENT



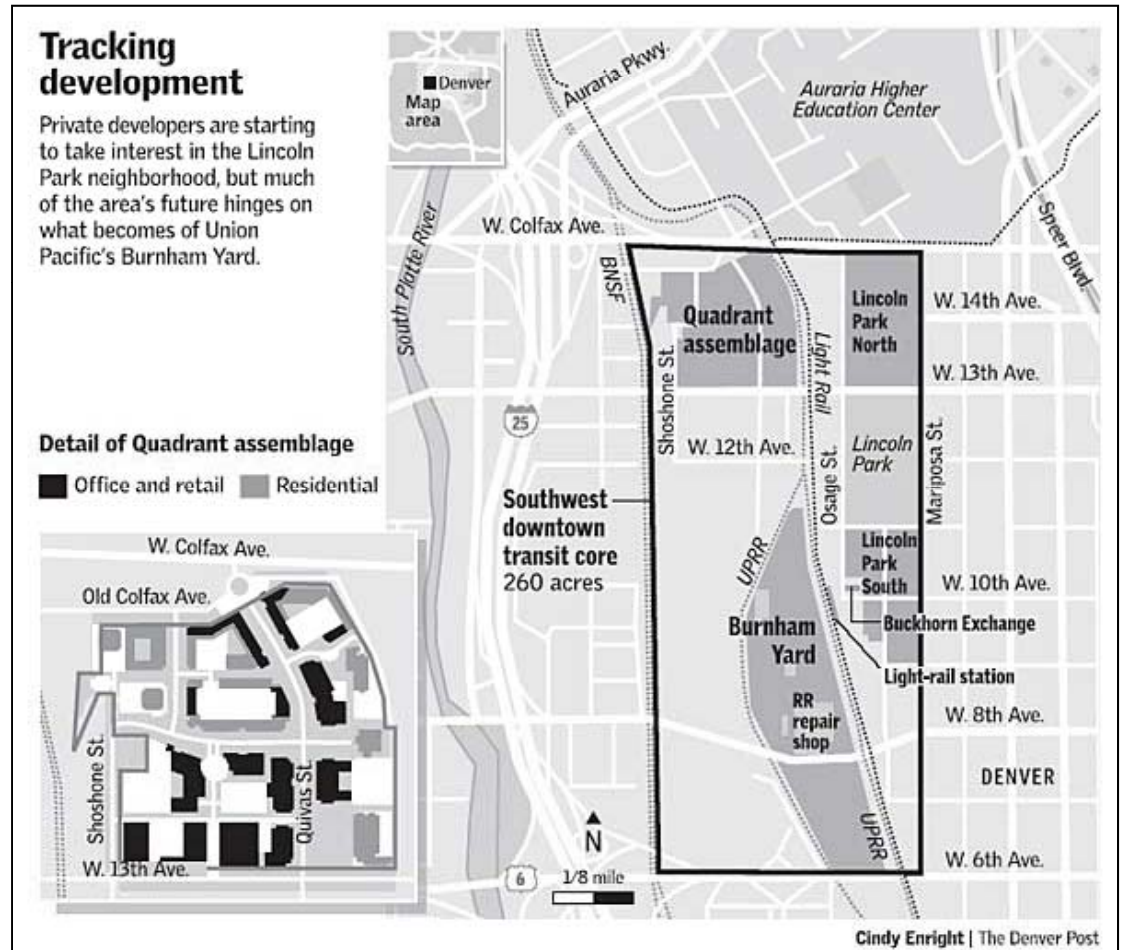
JUNE 2006



## Lincoln Park on brink of change

Developers, the city and nonprofits are all ogling Lincoln Park's prime location and vacant land near downtown. But the fate of a train yard and new light rail could divide the process.

By Margaret Jackson  
Denver Post Staff Writer



## Housing redevelopment

The Denver Housing Authority on Tuesday presented its plan for redevelopment of the 270-unit South Lincoln Homes into a 900-unit mixed-income, mixed-use community.



*The Denver Post*

## Renewal set for Lincoln public housing project

Public housing units will be demolished and replaced with a mixed-use development.

**By Margaret Jackson**

*The Denver Post*

# Now



# Future



# 2006 Stakeholder Survey

	P R O B A B L E					D E S I R A B L E				
	5 Very pr.	4 Proba ble	3 So so	2 Not pr.	1 Not at all	5 Very des.	4 Desirable	3 So so	2 Not des.	1 Not at all
1. Overlay zoning	4 22%	5 28%	7 39%	1 6%	1 6%	9 <b>43%</b>	5 <b>24%</b>	6 29%	0 0%	1 5%
2. Convert Kalamath and Santa Fe as two-way streets	0 0%	0 0%	4 22%	8 44%	6 33%	6 27%	1 5%	6 27%	4 18%	5 23%
3. Form a business improvement district along Santa Fe	6 30%	4 20%	5 25%	4 20%	1 5%	8 <b>38%</b>	8 <b>38%</b>	3 14%	0 0%	2 10%
4. Provide a pedestrian bridge to cross Colfax at Kalamath.	2 11%	3 17%	8 44%	4 22%	1 6%	11 <b>50%</b>	3 <b>14%</b>	5 23%	2 9%	1 5%
5. Improve 10 <sup>th</sup> Ave. as an Art Walk	5 31%	8 50%	2 13%	1 6%	0 0%	14 <b>67%</b>	5 <b>24%</b>	0 0%	0 0%	2 10%





<b>6. Develop a Museum North of 10<sup>th</sup> and Osage Station</b>	1 6%	4 22%	9 50%	3 17%	1 6%	10 <b>45%</b>	4 <b>18%</b>	5 23%	1 5%	2 9%
<b>7. Develop west of the Station as mixed use blocks</b>	1 6%	9 50%	5 28%	3 17%	0 0%	8 <b>42%</b>	9 <b>47%</b>	1 5%	1 5%	0 0%
<b>8. Develop west of the Station as mixed use blocks including housing</b>	2 12%	5 29%	6 35%	3 18%	1 6%	9 <b>41%</b>	8 <b>36%</b>	3 14%	1 5%	1 5%
<b>9. Provide a pedestrian bridge on 10<sup>th</sup> to open up the western part for development</b>	2 12%	4 24%	6 35%	4 24%	1 6%	8 <b>40%</b>	6 <b>30%</b>	4 20%	1 5%	1 5%
<b>10. Provide grade separation (over or underpass) at 13<sup>th</sup> and railroads</b>	3 16%	3 16%	7 37%	4 21%	2 11%	7 <b>37%</b>	5 <b>26%</b>	4 21%	2 11%	1 5%



<b>11. Rezone and develop an art/entertainment district north of 13<sup>th</sup> South of Colfax</b>	2	4	8	4	1	2	6	9	2	1
	11%	21%	42%	21%	5%	10%	30%	45%	10%	5%
<b>12. Rezone and develop an education / technical center at 13th and Shoshone</b>	2	4	7	4	3	8	2	9	2	1
	10%	20%	35%	20%	15%	36%	9%	41%	9%	5%
<b>13. Provide shopping South of Colfax west of railroads</b>	2	3	7	4	4	6	4	8	2	2
	10%	15%	35%	20%	20%	27%	18%	36%	9%	9%
<b>14. Reroute 8<sup>th</sup> Avenue to join 6<sup>th</sup> west of railroads (west of RTD facility).</b>	1	1	7	3	4	3	6	6	1	3
	6%	6%	44%	19%	25%	16%	32%	32%	5%	16%
<b>15. Improve streetscaping on 10th</b>	6	10	1	0	1	16	2	1	1	1
	33%	56%	6%	0%	6%	76%	10%	5%	5%	5%



16. At south Lincoln Park Homes, decrease

the semi-public areas by increasing private	3	6	6	2	1	13	8	1	0	1
yards to provide better defensible space	17%	33%	33%	11%	6%	57%	35%	4%	0%	4%

17. Develop a “culture bus” connecting art

galleries, first Fridays of the month,	8	9	2	0	1	9	7	4	0	2
as event as itself.	40%	45%	10%	0%	5%	41%	32%	18%	0%	9%

