

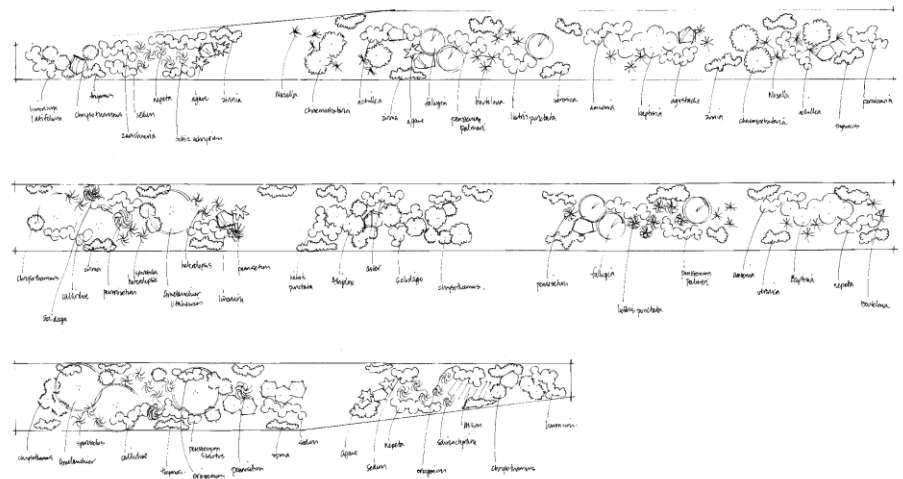
# Water-wise Landscape Horticulture for Western Landscapes

Annie M. R. Barrow

*Manager of Horticulture Outreach Programs, Denver Botanic Gardens*

Planting designs, Project consultation  
on installation, plant selection,  
maintenance

Streetscapes/Medians, Public  
spaces/parks, Commercial properties,  
Community Gardens, Flood  
planning/water gardens, Greenroofs



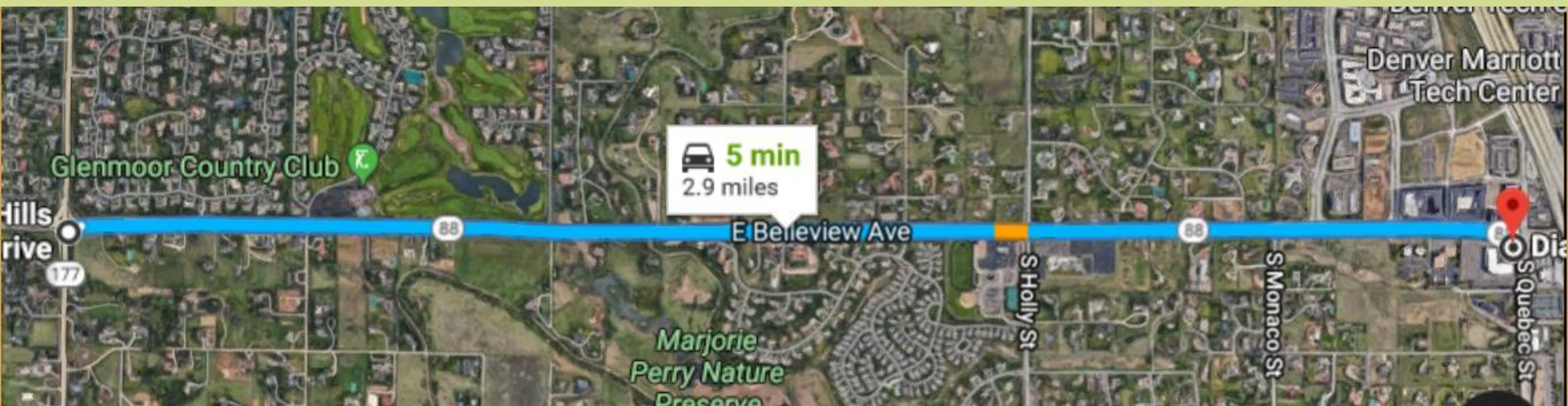


## Horticulture Outreach Programs: Current Projects

### Lakewood, CO 1 mile median along Colfax from Kipling to Simms



### Greenwood Village, CO 3 mile median along Belleview from University to I-25





# Xeriscape = “Zero”scape





Xeriscape = dull







**Lush, textured & colorful landscapes that require little maintenance**



# DENVER BOTANIC GARDENS

## Denver, CO











**Denver's front range is a steppe climate in the High Plains**



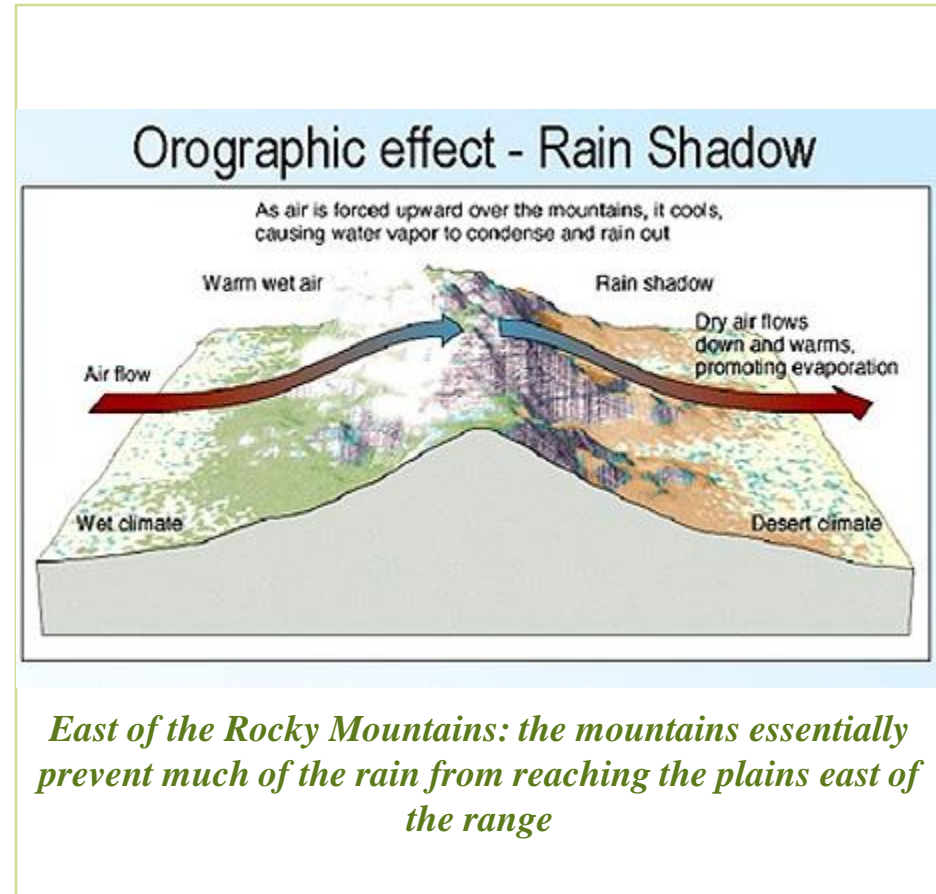


**The Western portion of the Great Plains:** Eastern SD, WY, Western NE, Eastern CO, Western KS, Northeastern NM, Western OK, Northwestern TX



## Steppe Climate Characteristics

- ✓ Semi-Arid = low humidity, little precipitation (10-20 inches/year)
- ✓ High Elevation 1500 – 7800' allows for warm winter temps and freezing spring temps
- ✓ Wide temperature swings
- ✓ Drought years
- ✓ Hail
- ✓ Frequent high, drying winds





## Unique Approach

- Soil amendments critical - provide drainage, often little to no organic material needed
- Preventative approach to weed management
- Aim to shut off irrigation after plants are established





## Barriers

- Lack knowledge of western plants
- Unaware of regional climate
- No plant palette specific for CO and western region
- Lack sources (wholesalers) for western plants





## Use Native plants (Native to CO & Western States)

### Use of Native Plants = Reduced Costs

- Minimize soil amendments
- Reduce water consumption
- Lower maintenance requirements

### Use of Native Plants = Environmental Responsibility

- Once established, drought resistant
- Increase native bees & pollinator populations
- Provides texture, color and lush thriving garden





## Use Native Cultivated Varieties (Native to CO & Western US)



**Native species**



**Cultivated variety or hybrid**



## Use Native Species (Native to CO & Western States)



*Echinacea angustifolia*



*Liatris punctata*



## Recommended Trees: Native



*Foresteria neomexicana* New Mexican Privet





*Acer tartaricum* 'Hot Wings'



## Recommended Shrubs



*Amorpha canescens*



Dwarf Rabbitbrush



## Recommended Genus



*Agastache*



*Penstemon*



## Recommended Grasses



*Bouteloua* 'Blonde  
Ambition'



*Schizachyrium*



*Sporobolus heterolepsis*



## Use Plant Select® plants



- ✓ Easy way to select tough plants for our region
- ✓ Tested for several years to thrive in broad range of conditions
- ✓ Criteria for testing includes attractiveness as well as toughness
- ✓ Available at many local retailers & wholesalers in WY, TX, CO, ID, MT, NE, SD
- ✓ Over 130 plants including annuals, perennials, groundcovers, vines, trees and shrubs (evergreen and deciduous)









*Kniphofia*



*Diascia* 'Coral Canyon'



# Plant Selection for Small Scale Plantings

- Soil is typically disturbed from site construction
- Smaller spaces mean smaller, tidier plants
- Highway traffic is 40 mph or less -visually things are seen in masses
- Traffic stops allow for closer inspection of landscape
- Well defined planting areas meaning formal and or intentional designs
- Irrigation and maintenance may be provided



**Plant selection will be different for small and large scale sites**



## Plant Selection for Large Scale Plantings

- Native and naturalized aesthetic appropriate
- Visual impact best in masses
- Slope and drainage may vary, allowing for mixed plantings
- Minimal maintenance and irrigation



**Plant selection will be different for small and large scale sites**



**Online** - Plant Select.org, Local and County extension offices

**Visit** – Denver Botanic Gardens: Roads water-smart garden & Birds and Bees Garden, Kendrick Lake (Lakewood, CO), Aurora Xeriscape, CO Springs Utilities

**Handout** - Plant list

Questions: [annie.barrow@botanicgardens.org](mailto:annie.barrow@botanicgardens.org)