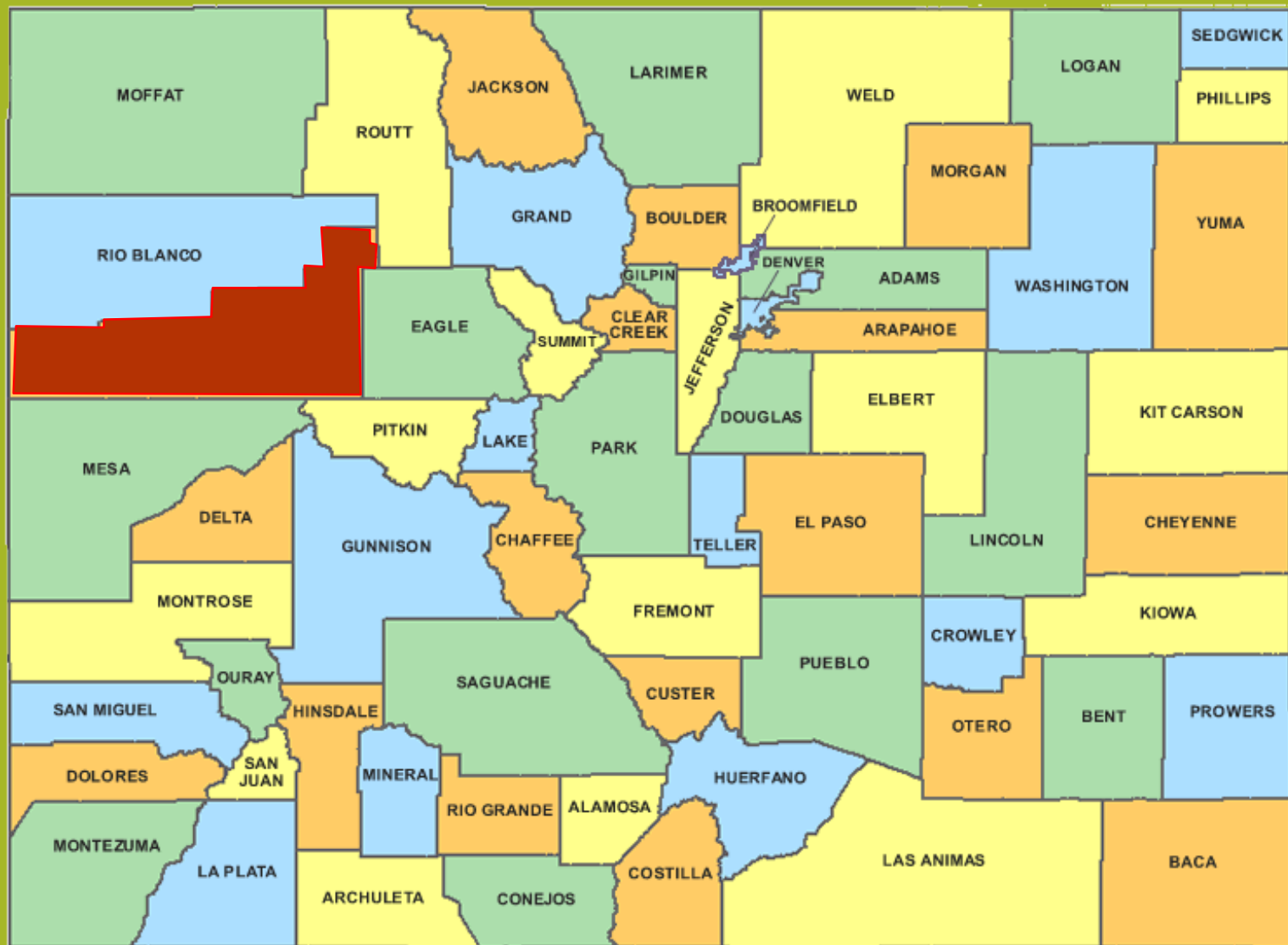
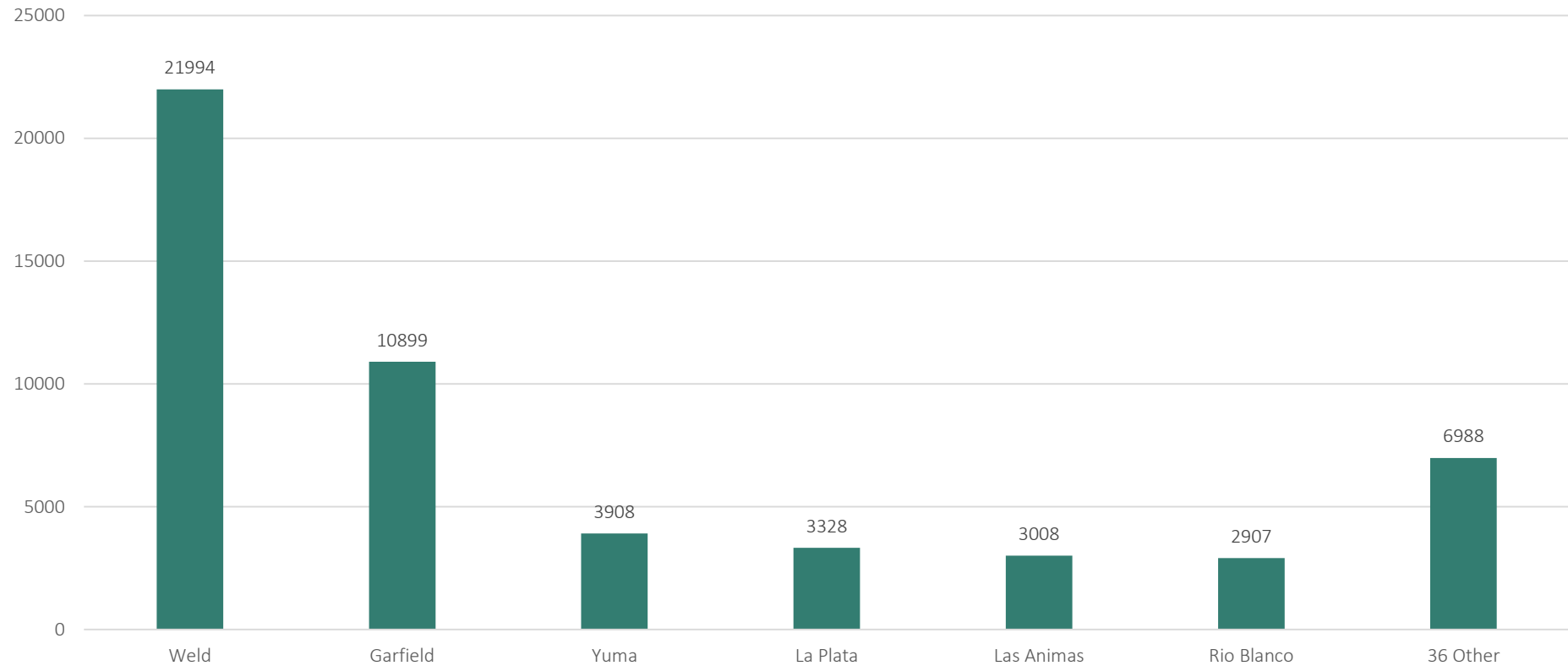




Non-Regulatory Approaches to Oil & Gas Development



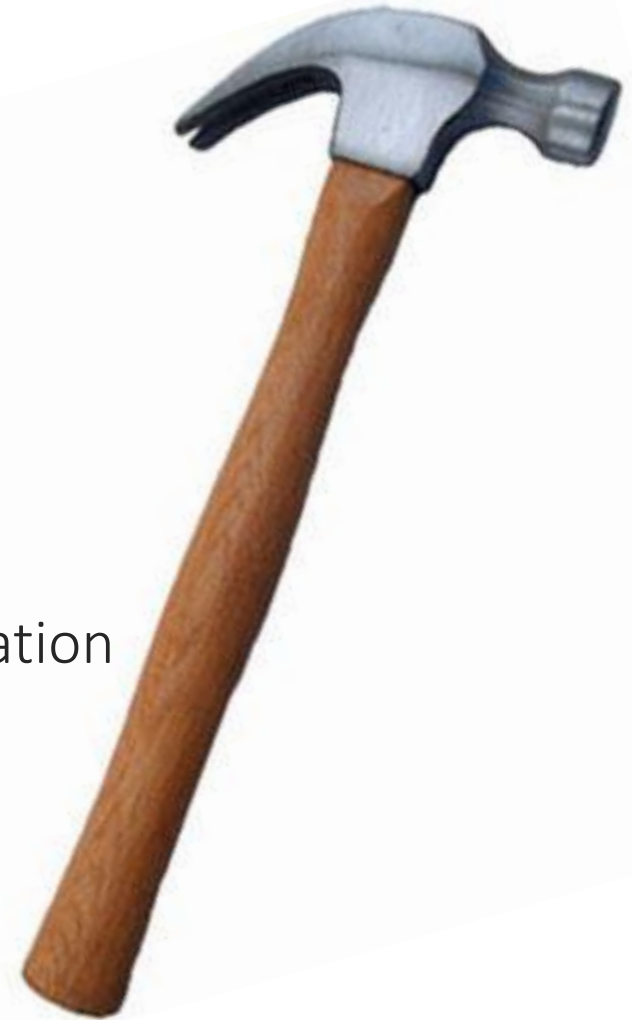
Number of Active Wells by County: 2015



Source: Colorado Oil and Gas Conservation Commission

Not so blunt tools....

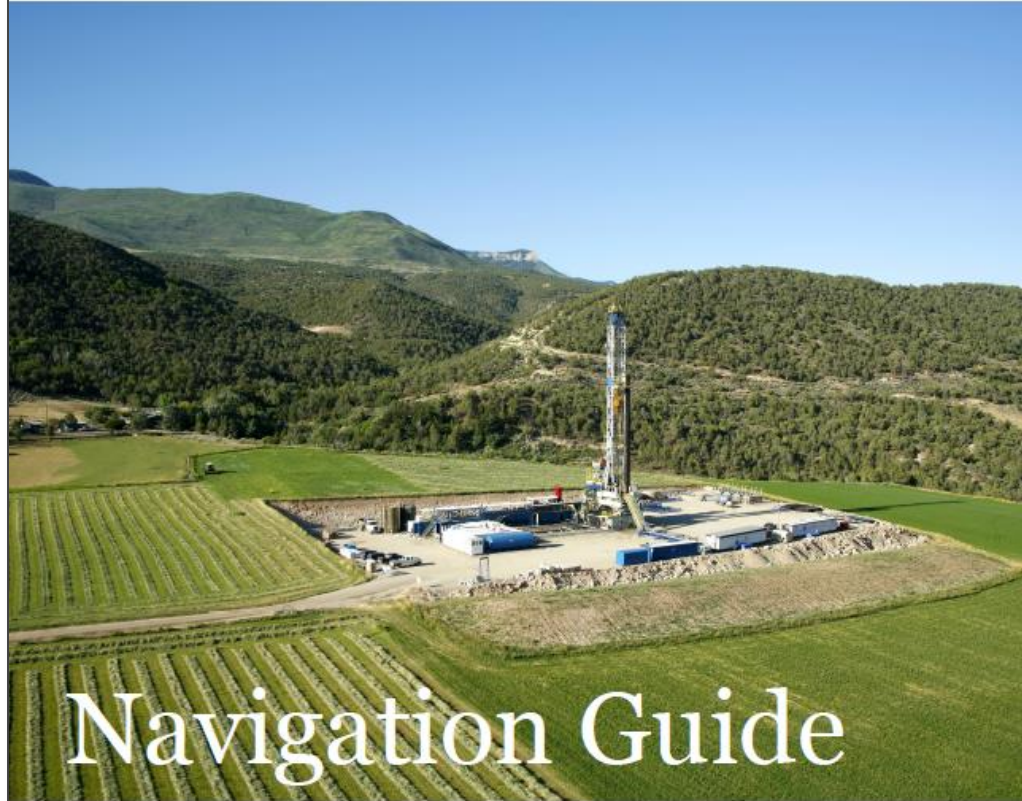
- Oil and Gas Liaison (LGD)
- Community Counts
- Navigation Guide
- Air Quality Monitoring
- Energy and Environment Symposium
- Energy Advisory Board
- Monthly Industry Task Force Meeting
- NW Oil and Gas Forum
- Annual Industry Training
- Greater Sage Grouse Conservation Planning





Meetings and Trainings

Monthly	Quarterly	Annually
Energy Advisory Board	NW Oil and Gas Forum	Industry Training
Operator's Task Force		



Navigation Guide

to Oil & Gas Development Projects
in Garfield County





GARFIELD COUNTY

GREATER SAGE-GROUSE CONSERVATION PLAN

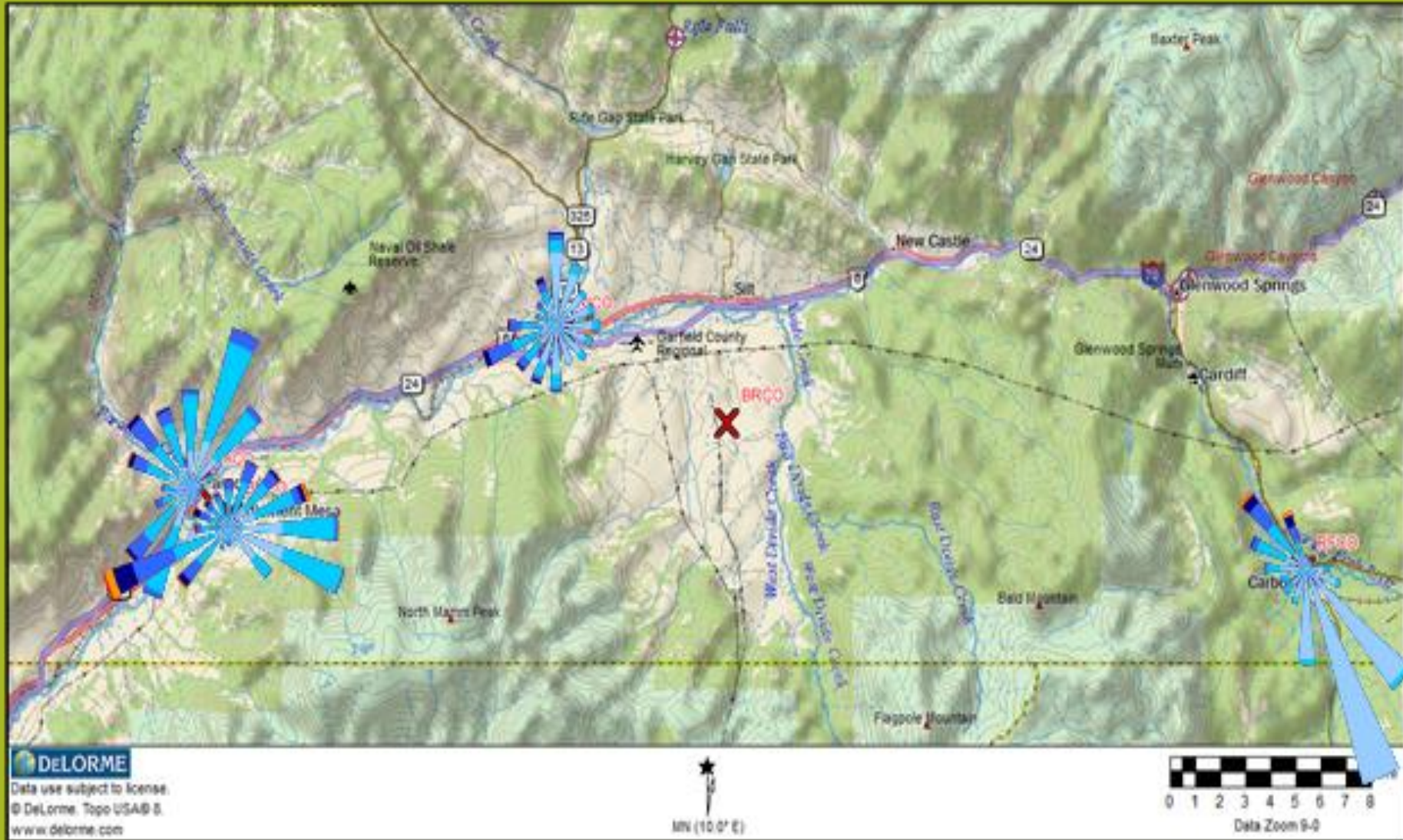
Adopted: March 18, 2013 (via Resolution 2013-23)

*First Amendment to Plan: November 17, 2014
(via Resolution 2014-67)*

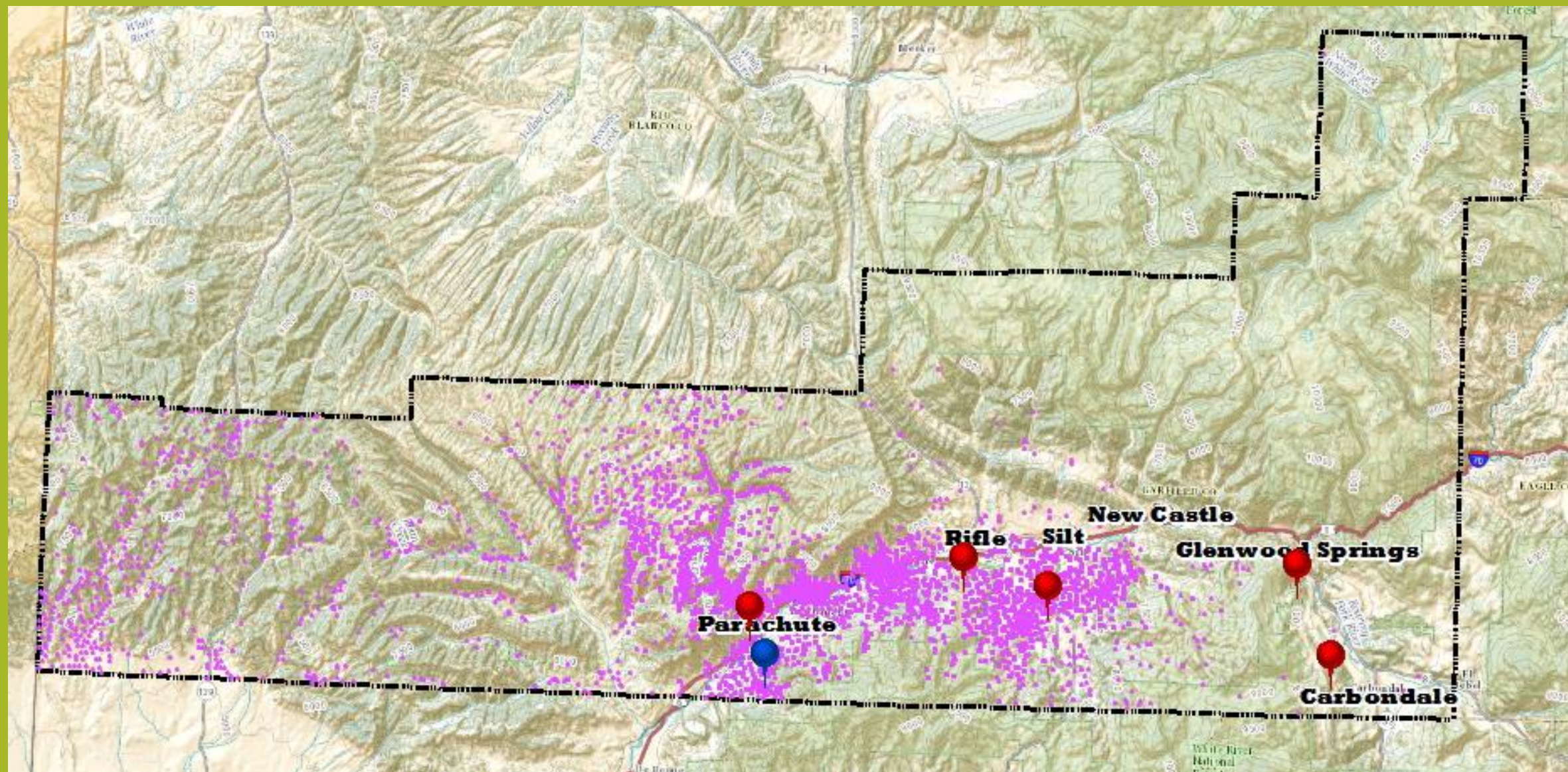


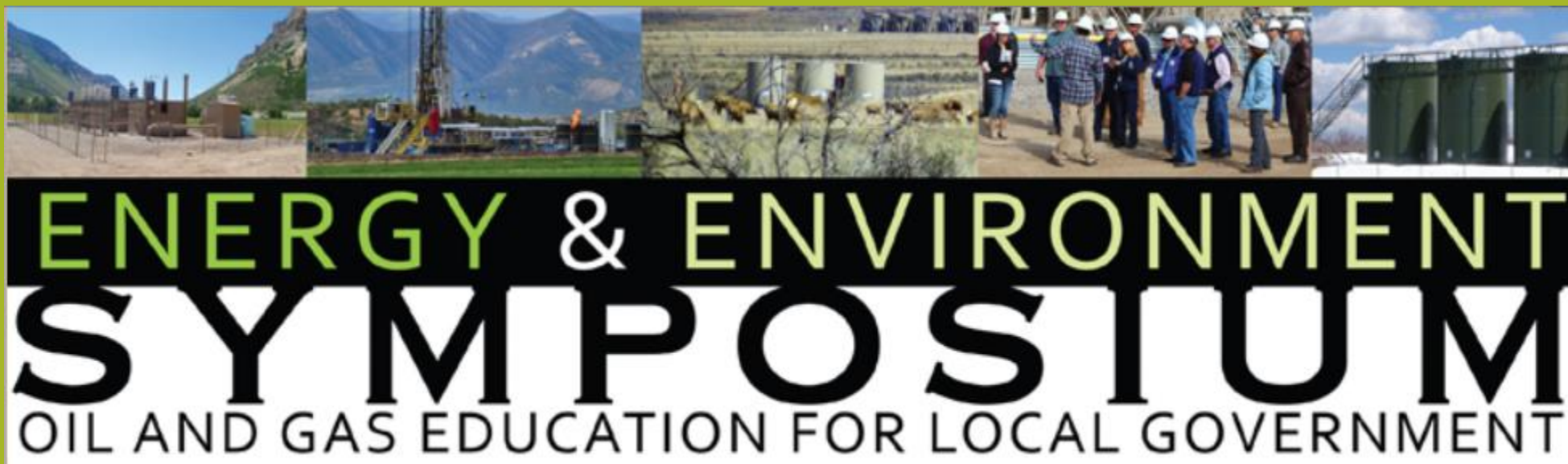
Garfield County Board of County Commissioners

*John Martin, Chairman
Mike Samson
Tom Jankovsky*



Air Quality Monitoring Program





ENERGY & ENVIRONMENT SYMPOSIUM

OIL AND GAS EDUCATION FOR LOCAL GOVERNMENT



Oil and Gas Liaison &
Local Government Designee

Regulatory Approaches

Table 3-403: Use Table														
/P/ By Right /A/ Administrative Review /L/ Limited Impact Review /M/ Major Impact Review /•/ Exempt from County Review and Standards														
Use Category	Use Type	Residential Districts				Nonresidential Districts				Resource Land Zone Districts				Unless exempted, all uses must comply with Article 7 Standards including Use-Specific Standards.
		R	RS	RU	RM HP	CL	CG	I	PL	RL P	RL E	RL TS	RL GS	
RESIDENTIAL USES														
Temporary	Employee Housing Facility, Major	M	M	M	M	M	M	M	•	L	L	L	L	7-705
	Employee Housing Facility, Minor	A ¹	A ¹	A ¹	A ¹	A ¹	A ¹	A ¹	•	A ¹	A ¹	A ¹	A ¹	7-706
	Employee Housing Facility, Small	P	P	P	P	P	P	P	•	P	P	P	P	7-707
PUBLIC/INSTITUTIONAL USES														
Transportation	Access Route	A	A	A	A	A	A	A	•	P	P	P	P	
INDUSTRIAL USES														
Extraction	Compressor/Pipeline Pump Station (Not Subject to Article 9)	L	L					L	•	L	L	L	L	7-1001
	Compressor, Booster	A	A	A	A	A	A	A	•	P	P	P	P	
	Extraction, Mining and Other	M						L	L	L	L	L	L	7-1001, 7-1003
	Hydraulic Fracturing, Remote Surface Location	P	P	P	P	P	P	P	•	P	P	P	P	EXEMPT
	Injection Well, Piped	P	A					P	•	P	P	P	P	7-1001
	Injection Well, Small	A	A					P	•	P	P	P	P	7-1001
	Injection Well, Large	L	L						•	P	P	P	P	7-1001
	Oil and Gas Drilling and Production	P	P	P	P	P	P	P	•	P	P	P	P	EXEMPT
Service	Contractor's Yard, Small	A				P	P	P	•	A	A	A	A	7-1001
	Contractor's Yard, Large	M				P	P	P	•	L		L	L	7-1001
	Material Handling	L					L	L	•	A	A	A	A	7-1001
	Processing	L				L	L	L	•	A	L	A	A	7-1001
	Processing, Temporary	A				A	A	A	•	A			A	7-1001
	Vehicles, Machinery, and Heavy Equipment	M						M	•	L			M	7-1001
	Vehicle Safety Area	A							•	P			P	7-1007
Warehouse and Freight Movement	Storage	L				P	P	P	•	A	A	A	A	7-1001
	Storage, Hazardous Materials	M				M	M	M	•	L			L	7-1001
Waste and Salvage	Mineral Waste Disposal Areas	L						L	•	L	L	L	L	7-1001
	Water Impoundment	L						L	•	L	L	L	L	7-1001

Pipelines

- A) greater than 12 inches in diameter and over two miles in length, or
- B) greater than five miles in length

