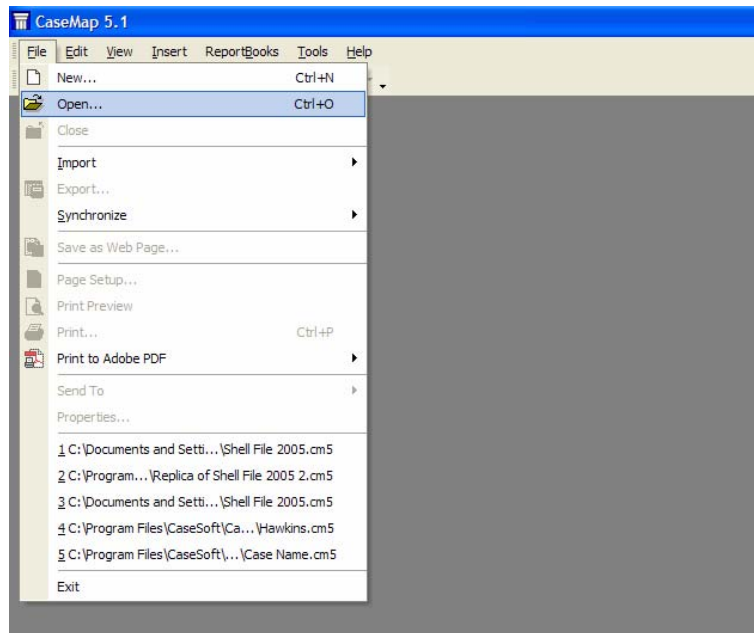


Getting Started with CaseMap

Welcome to CaseMap. Throughout the semester you will be using CaseMap to assist you in preparing legal research for your Lawyering Process class. This document will walk you through the first steps you need to take to use CaseMap effectively for class. If you have trouble with any of the steps, please contact the LP Student Associate for Technology or the Law School Help Desk.

- The first step is to make sure that you have the software installed. If you purchased a laptop through the school, you should already have the software on your computer. Look on your desktop for a folder called Lawyering Process. Open the folder by double-clicking on it. You should have a CaseMap 5 icon.
- Once you have opened CaseMap, you need to find the “Shell File 2005.” The shell file is an empty CaseMap file that we have created for use in Lawyering Process this year. You must complete your assignments by using the Shell File. You may find the file either on your LP CD under the LP Software link or on the LP website at www.law.du.edu/lawproc
- The next step is to place the Shell File on your computer. You may do this by copying and pasting the file from the CD or by downloading the file from the website. Once you have done this, you may open the file from CaseMap.
- Select “Open” from the File Menu. Then browse for the file on your computer.



When you open the file, you will be asked to sign in. For now, the default user is “Student.” You will have to change this; consult the document on Changing User Names.