

Local Government

collaborative efforts
lessons learned
best practices



Jefferson County
Open Space
enriching life



Jefferson County
Open Space
enriching life

Multiple Goals

Scenic

Business

Ecosystems

Wildlife

Recreation

Smart Growth

Air & Water Quality



Jefferson County
Open Space
enriching life

Local Government

Denver Mountain Parks

City of Boulder

Jefferson County

Front Range Mountain

Backdrop/Foreground

Colorado Open Space Alliance



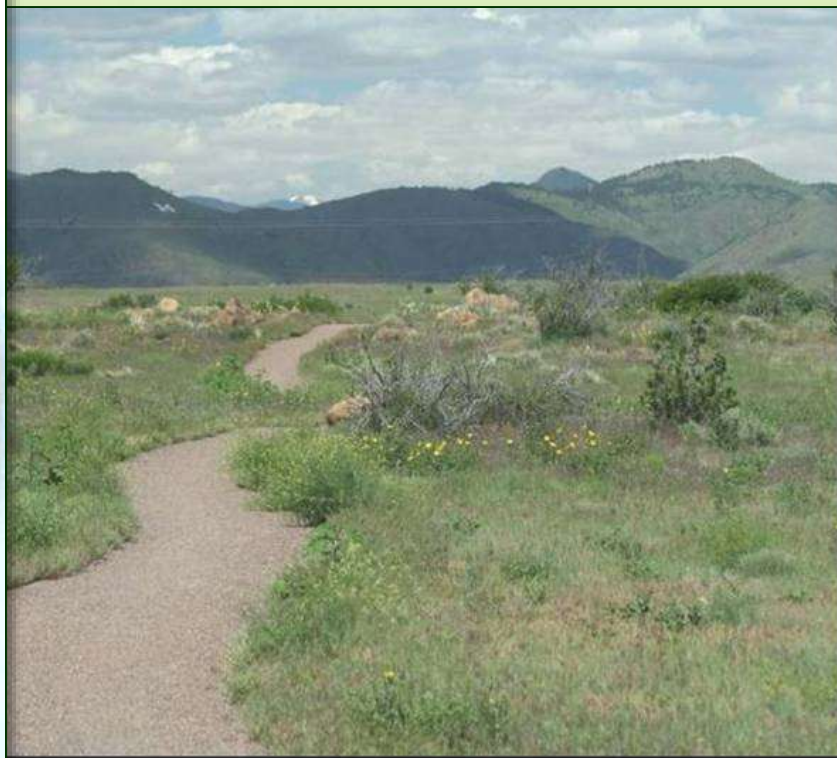
**Jefferson County
Open Space**
enriching life

Jefferson County Open Space

Attributable
Shares

Conservation
Trust Funds

SOS Bond
Funds



**Jefferson County
Open Space**
enriching life

Jefferson County Open Space

Cities

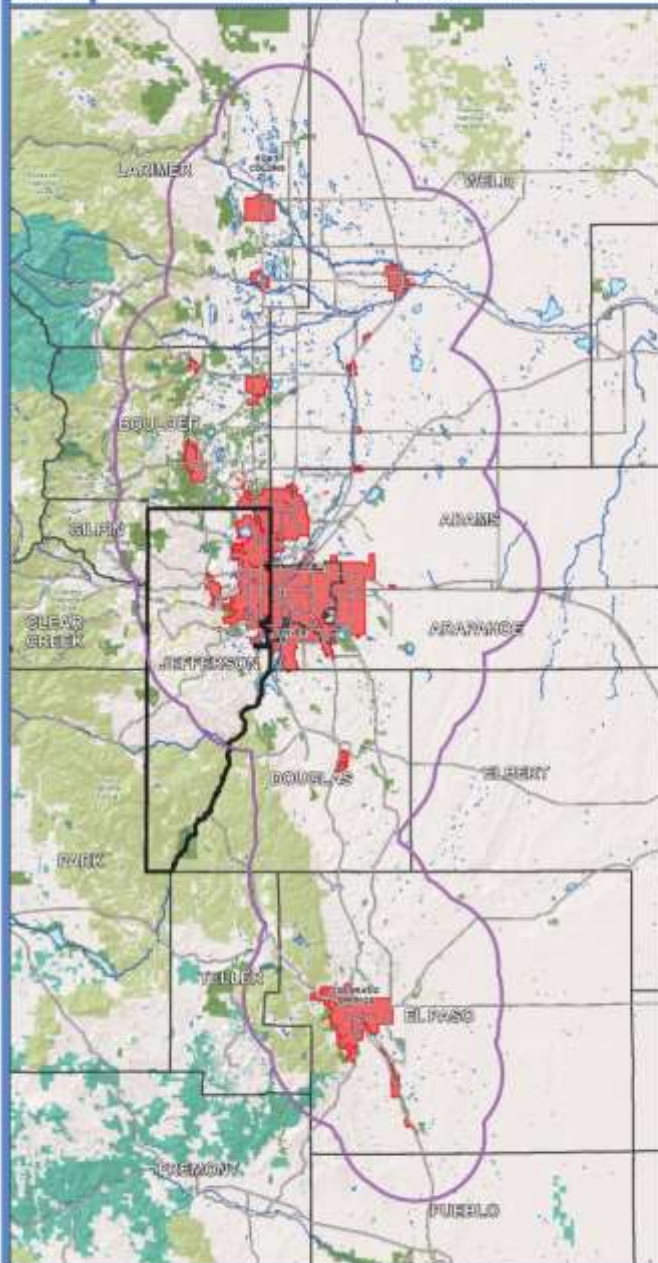
Arvada
Bow Mar
Edgewater
Golden
Lakeside
Lakewood
Littleton
Morrison
Mountain View
Westminster
Wheat Ridge

Districts

Apex P&R
Bowles Metro
Coal Creek Canyon P&R
Columbine Knolls Grove Rec
Evergreen P&R
Foothills P&R
Ken Caryl Ranch Metro
Leewood Metro
Normandy Estates Metro
Pleasant View Metro
Prospect P&R
South Suburban P&R



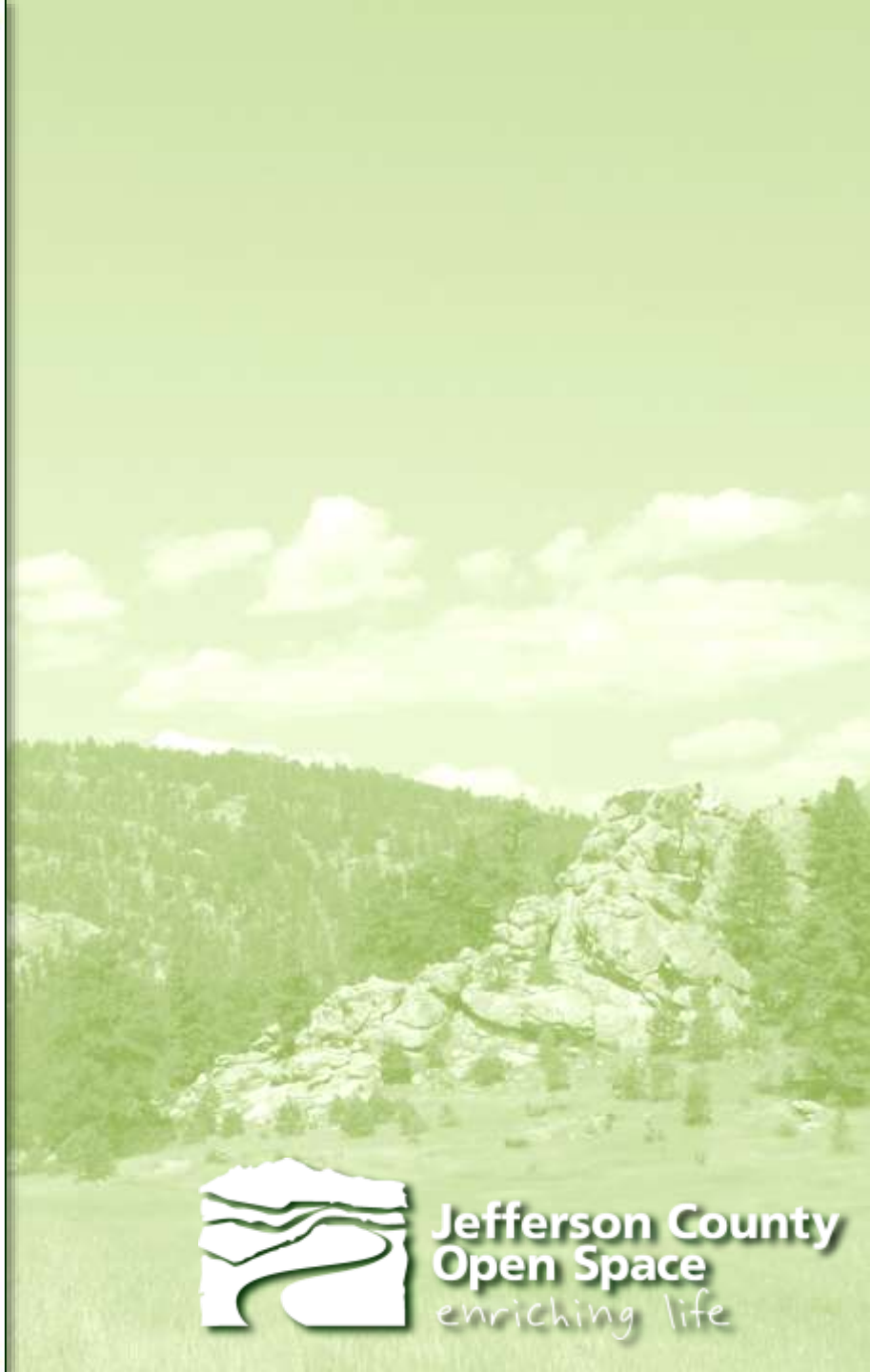
**Jefferson County
Open Space**
enriching life

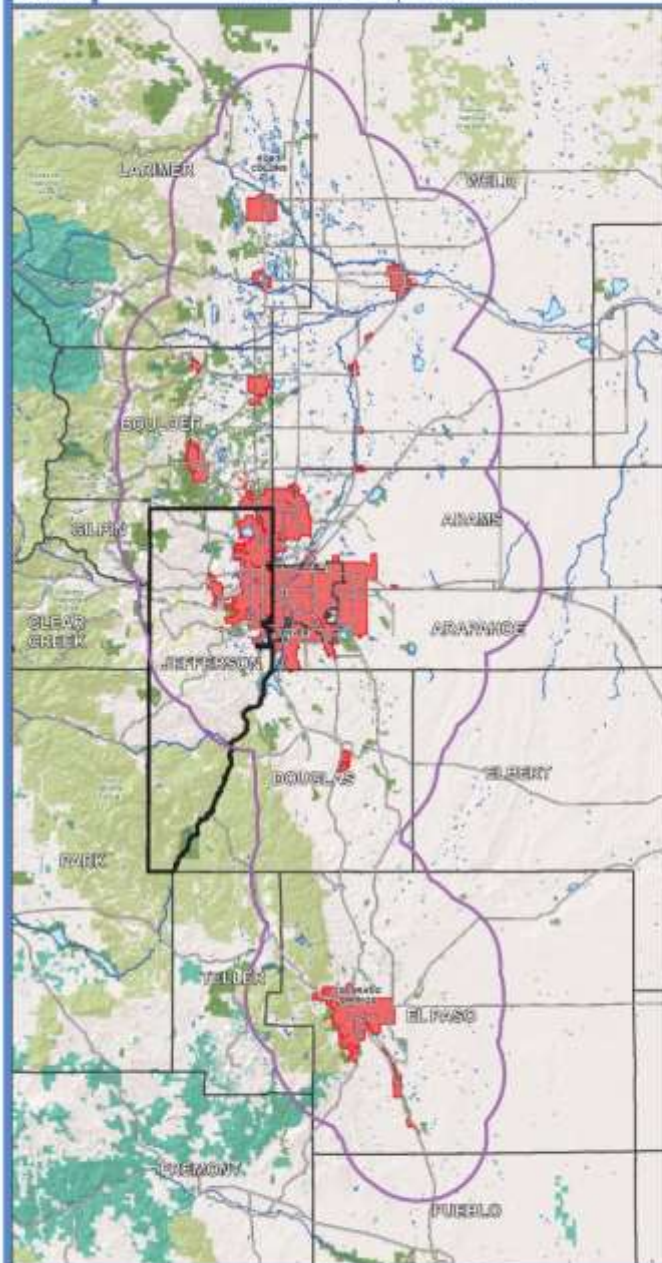


- Incorporated Area
 - Jefferson County Boundary
 - County Boundary
 - Buffer Boundary from Metropolitan Area (10 miles)
 - Major Highway
- Public Land**
- Denver Mountain Parks
 - U.S. Forest Service
 - City/County/State (Parks, Open Space or Land Bases)
 - U.S. Department of Interior (BLM, BCR, BPS, and PWS)
- Hydrology**
- Lake
 - River or Stream

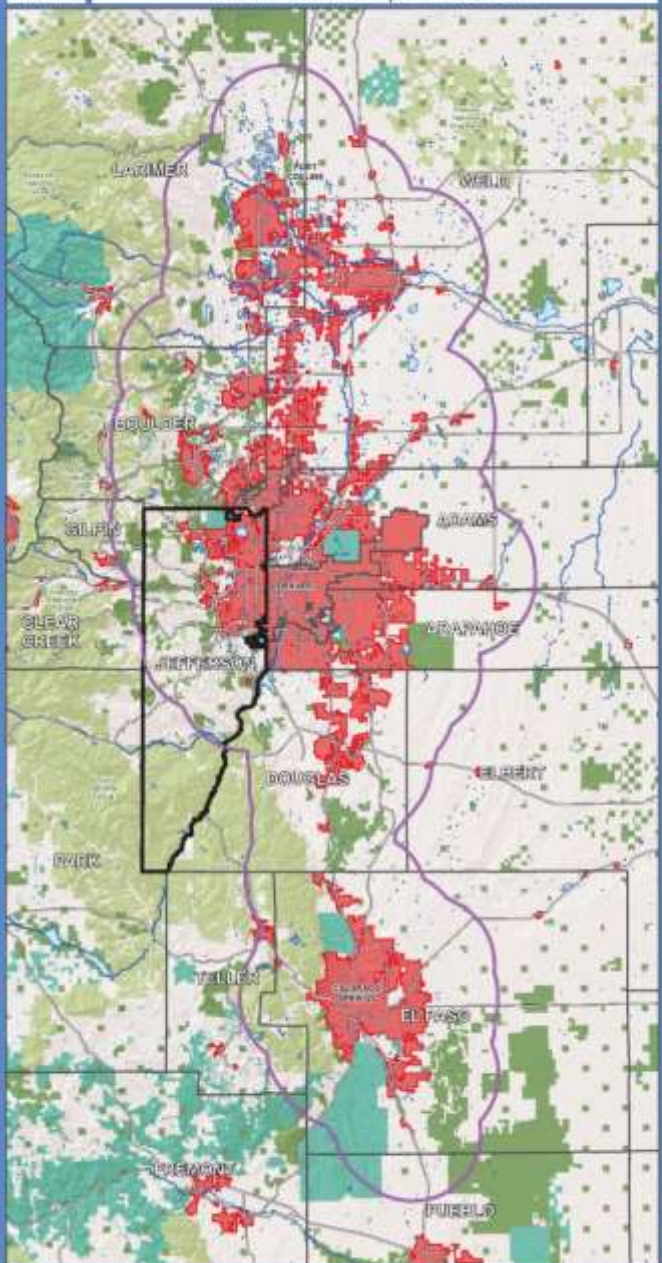


Source: U.S. Department of the Interior, Bureau of Land Management, 1972





- Incorporated Area
 - Jefferson County Boundary
 - County Boundary
 - Buffer Boundary from Metropolitan Area (10 miles)
 - Major highway
- Public Land**
- Denver Mountain Park
 - U.S. Forest Service
 - City, County or State (Parks, Open Space or Land Base)
 - U.S. Department of Interior (BLM, BLM, BIFIS, and FWS)
- Hydrology**
- Lake
 - Water or Stream



- Incorporated Area
 - Jefferson County Boundary
 - County Boundary
 - Buffer Boundary from Metropolitan Area (10 miles)
 - Major highway
- Public Land**
- Denver Mountain Parks
 - U.S. Forest Service
 - City, County or State (Parks, Open Space or Land Base)
 - U.S. Department of Interior (BLM, BLM, BIFIS, and FWS)
- Hydrology**
- Lake
 - Water or Stream

Map 9 of 10: Colorado Front Range Public Land & Population 1972. This map is based on data from the U.S. Census Bureau, U.S. Department of the Interior, and other sources. It is intended for informational purposes only and should not be used for legal or financial decisions. The map is a simplified representation of the data and does not show all details. The map is subject to change without notice. The map is a property of Jefferson County Open Space and is not to be reproduced without permission.

Map 10 of 10: Colorado Front Range Public Land & Population 2013. This map is based on data from the U.S. Census Bureau, U.S. Department of the Interior, and other sources. It is intended for informational purposes only and should not be used for legal or financial decisions. The map is a simplified representation of the data and does not show all details. The map is subject to change without notice. The map is a property of Jefferson County Open Space and is not to be reproduced without permission.

ty

Five County Front Range Mountain Backdrop/Foreground Study

GOCO Support

Larimer

Boulder

Jefferson

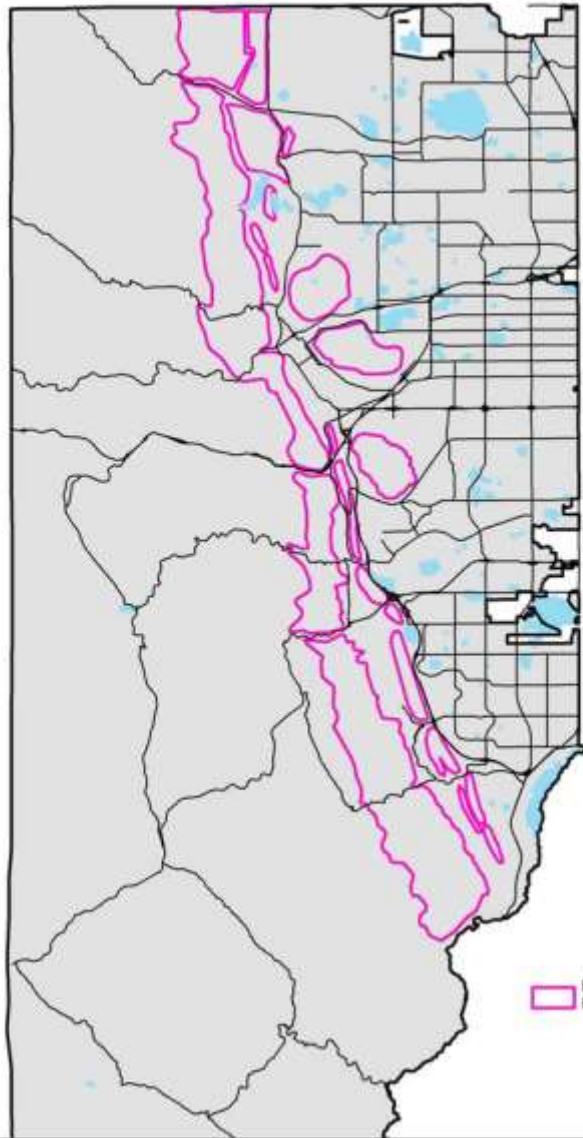
Douglas

El Paso



**Jefferson County
Open Space**
enriching life

**FRONT RANGE MOUNTAIN BACKDROP/FOREGROUND
PRESERVATION AREA**



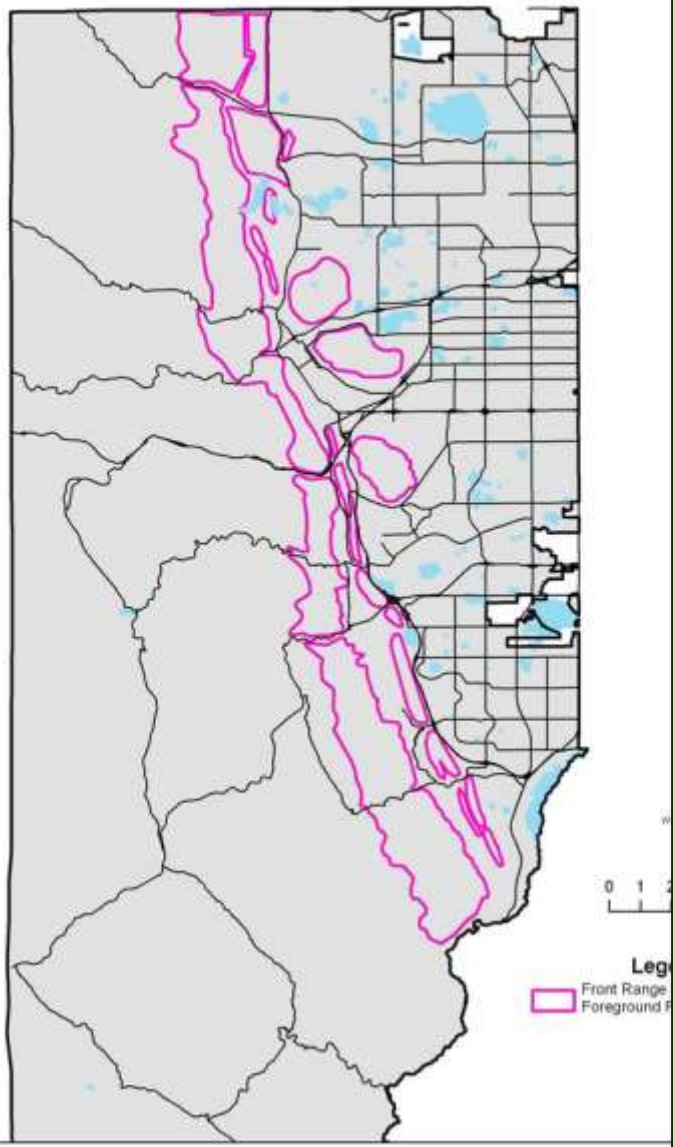
Legend
Front Range Mountain Backdrop/
Foreground Preservation Area

**Total Acres
targeted for
preservation in
Jefferson County:
41,572**

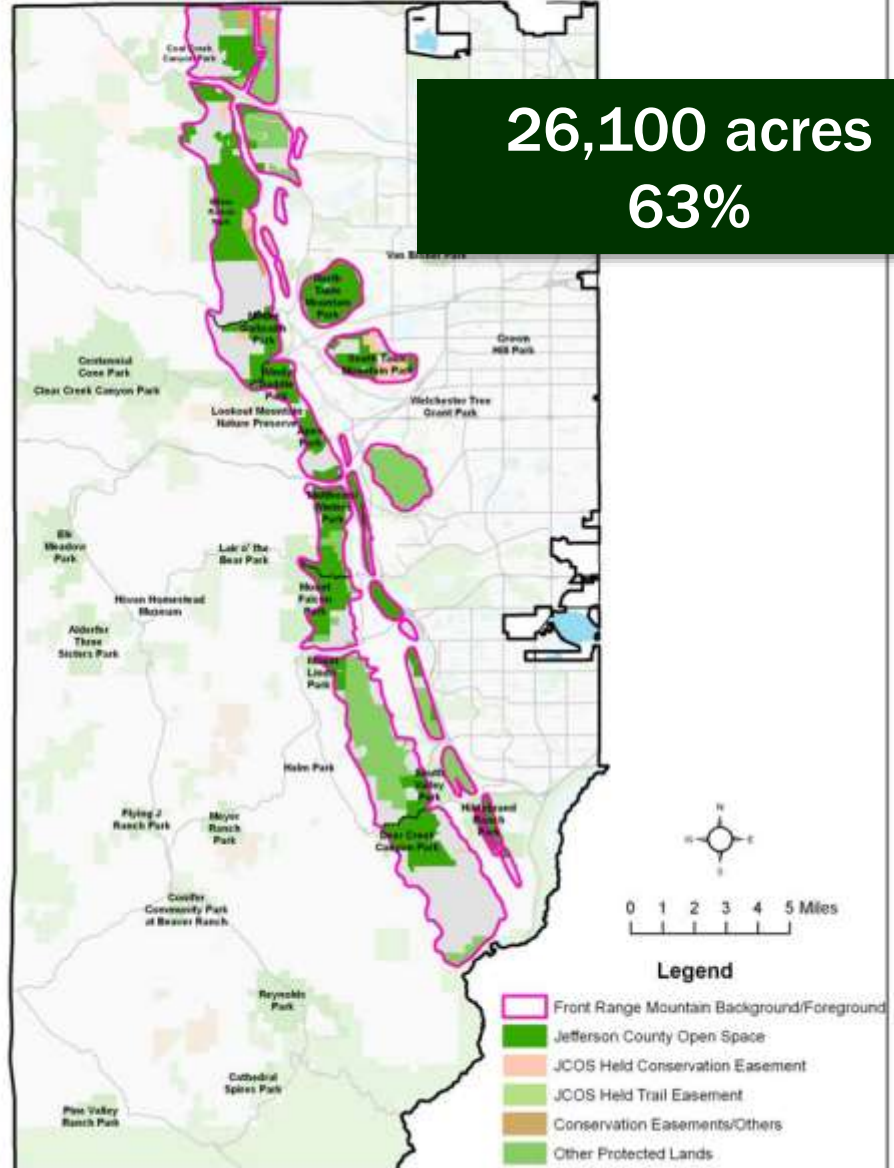


**Jefferson County
Open Space**
enriching life

FRONT RANGE MOUNTAIN BACKDROP/FOREGROUND PRESERVATION AREA



FRONT RANGE MOUNTAIN BACKDROP/FOREGROUND PRESERVATION AREA STATUS



26,100 acres
63%



Jefferson County
Open Space
enriching life

Rocky Flats – Section 16

Department of the Interior
State of Colorado
City of Boulder
Boulder County
Jefferson County Open Space

Trails: Westminster, Arvada,
Ditch Companies



Jefferson County
Open Space
enriching life

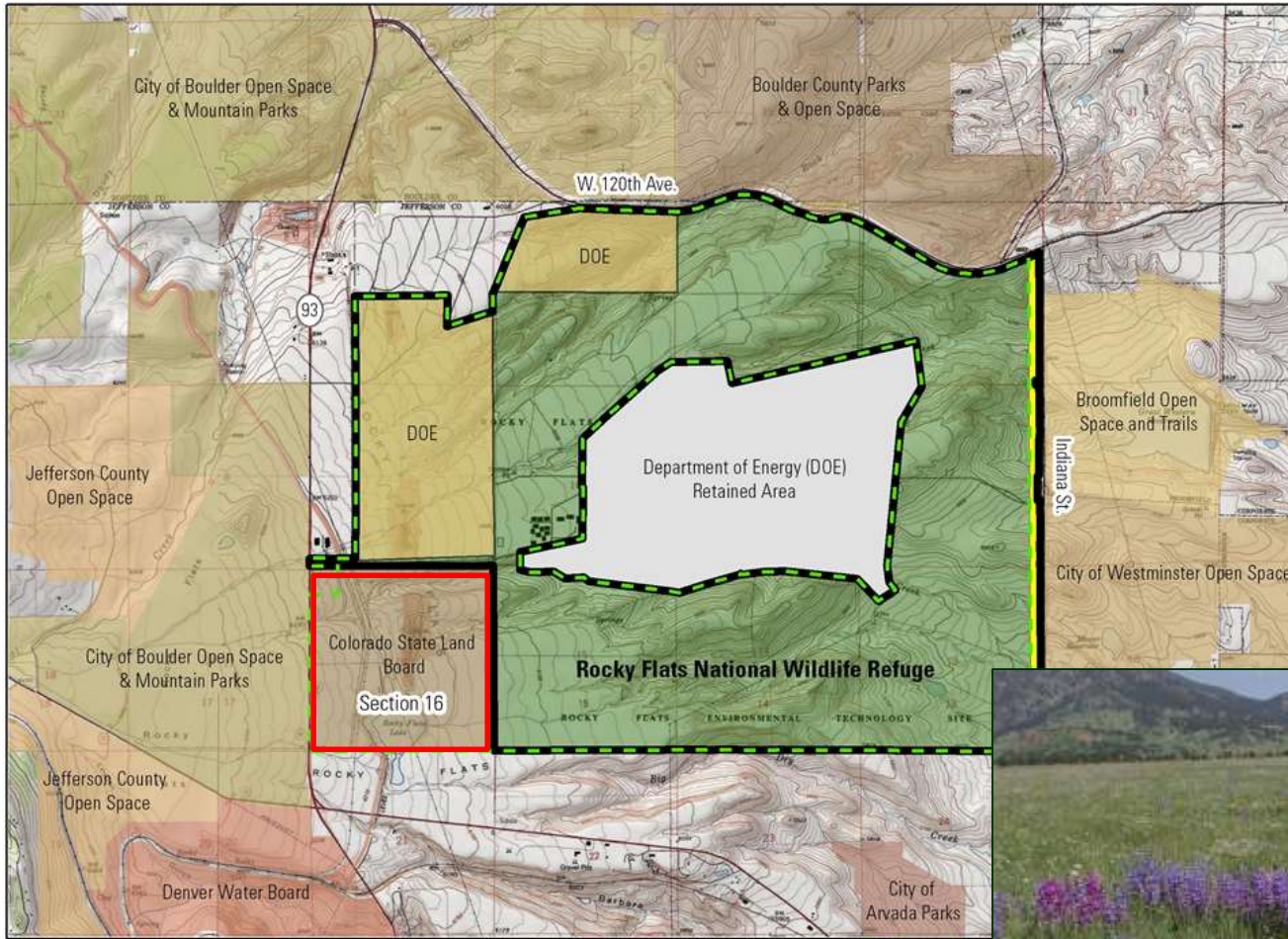


U.S. Fish & Wildlife Service

Rocky Flats National Wildlife Refuge

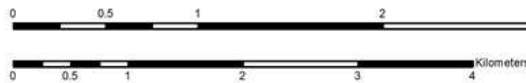
Boulder and Jefferson Counties, Colorado

Connectivity of Rocky Flats With Existing Open Space



300 Foot Right of Way
 Existing Approved Acquisition Boundary
 Proposed

PRODUCED IN THE DIVISION OF REFUGE PLANNING
 DENVER, COLORADO
 MAP DATE: 07/12/2011
 BASEMAP: NGS_TOPO_US_2D
 6TH PRINCIPAL MERIDIAN
 FILE: W:\CO\RF\MAPS\NFL_LPEEA_0711\NFL_LANDSTATUS_071111



Best Practices and Lessons Learned

Vision – *broad, options equate to opportunity*

Resources – *creativity, flexibility, inclusion*

Realities – *professional services, acquisition, development, management*

Persistence – *keep at it*



Jefferson County
Open Space
enriching life