




DU Water Law Review 2011
Symposium:
A Vision for the Future- *Balancing Population Growth with Increasing Water Demand*
Needs and Demands: What does the future really look like?

Jacob Bornstein, CWCB
April 15, 2011



New Water Needs Continue to Grow

- Colorado faces significant and immediate water supply challenges
- Population is expected to nearly double within the next 40 years
- Continuation of current trends will lead to a larger transfer of water out of agriculture



2

Diverse Solutions are Needed

- Providing an adequate water supply will involve implementing a mix of strategies
- All strategies should be pursued concurrently
- The Board recommends Colorado's water community enter an implementation phase




3

Created in 1937, the CWCB's Mission is to:

Conserve, Develop, Protect and Manage Colorado's Water for Present and Future Generations

4

HB05-1177 Water for the 21st Century Act Created Nine Basin Roundtables



- Consumptive Needs
- Nonconsumptive Needs
- Water Supply Availability
- Projects and Methods to Meet Needs

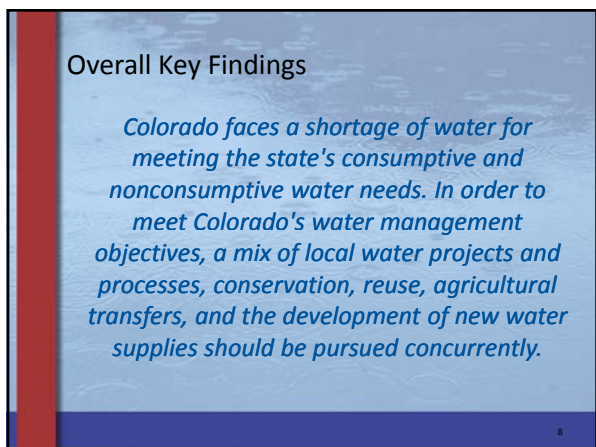
5

Statewide Water Supply Initiative 2010 Mission Statement:

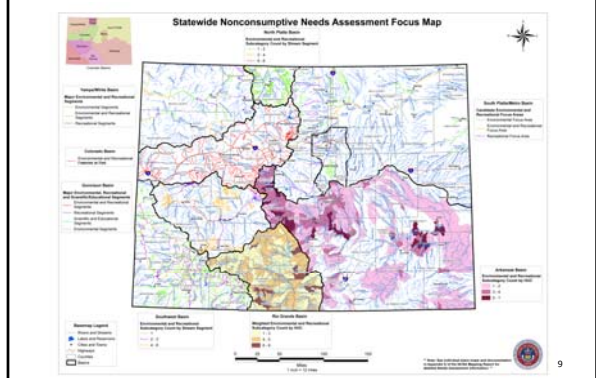
The Colorado Water Conservation Board will help Colorado maintain adequate water supplies for its citizens, agriculture, and the environment. This will be accomplished through a mix of solutions, all of which should be pursued concurrently.

6

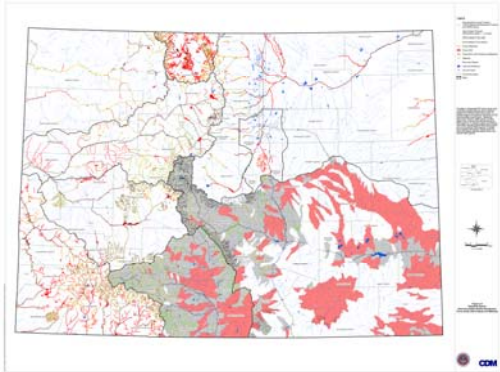




The Basin Roundtables have Identified 33,000 Miles of Streams and Lakes as Environmental and Recreational



Environmental and Recreational Focus Areas with and without Projects and Methods



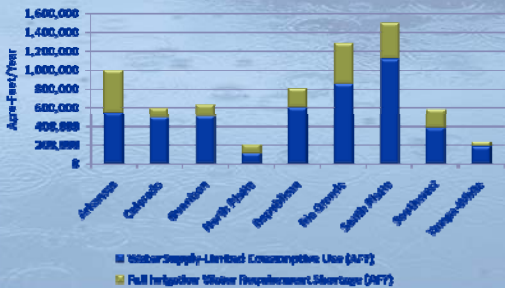
Nonconsumptive Projects and Methods Summary

- Of 33,000 miles of environmental and recreational focus areas nearly 1/3 have a project and method
- Nearly 50 percent of cold water environmental and recreational focus areas have a project or method
- Nearly 30 percent of warm water environmental and recreational focus areas have a project or method



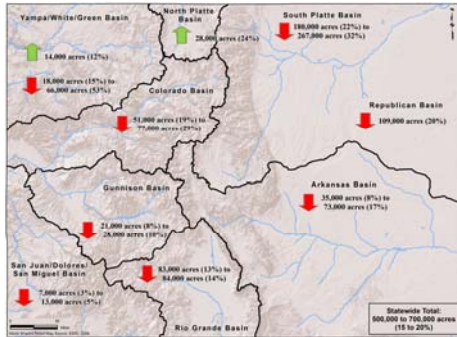
11

All Basins Have Continued Shortages for Agricultural Demands

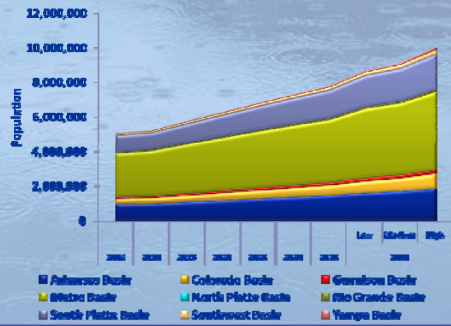


12

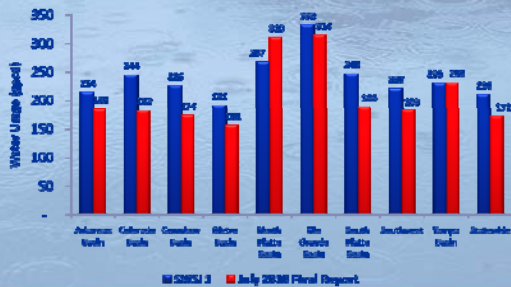
By 2050, Colorado Could Lose 500,000 to 700,000 Irrigated Acres Primarily Due to Urbanization and Urban Transfers

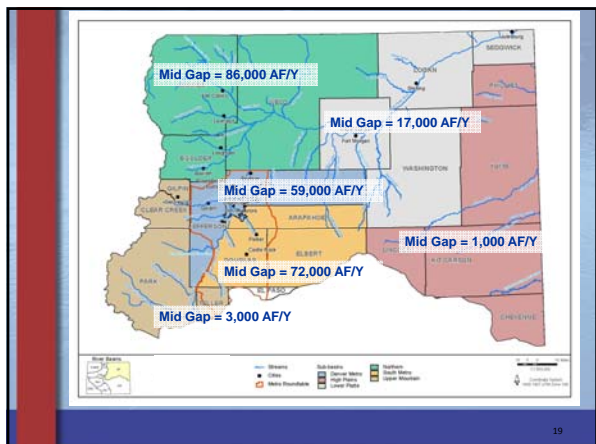


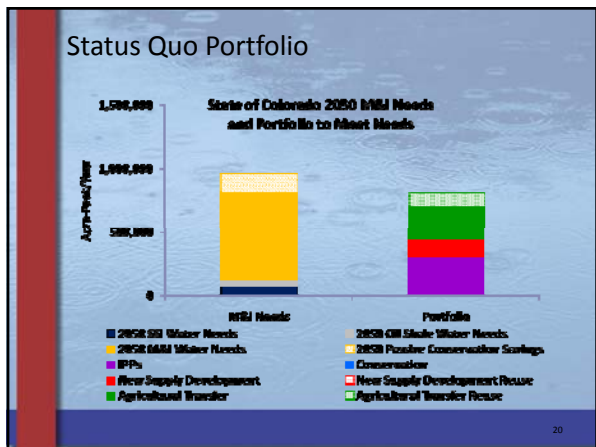
By 2050, Colorado's Population is Expected to Nearly Double

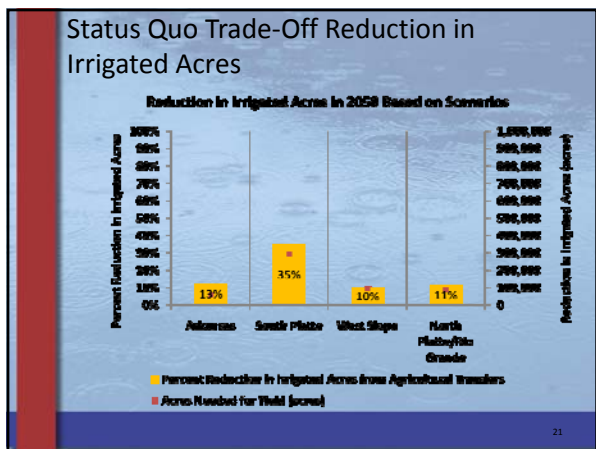


Per Capita Demand has Decreased by 18 Percent Since the Early 2000s, but the Cause and Permanence is Uncertain









CWCB, IBCC and Basin Roundtable Visioning Process

Elements of the Visioning Process

The visioning process led to the realization that the current approach for water management – the status quo – will lead to a large transfer of water out of agriculture

22

In Order to Avoid the Status Quo, Colorado Will Need a Mix of Solutions

| Possible Strategies | Examples of Projects and Methods |
|-------------------------------|--|
| Agricultural Transfer | • Agricultural Transfers (Traditional and Alternative) |
| New Supply Development | • Green Mountain • Flaming Gorge • Yampa • Blue Mesa |
| Conservation | • Active Conservation |
| IPPs | • Categories of IPPs include agricultural water transfers, reuse of existing fully consumable supplies, growth into existing supplies, regional in-basin projects, new transbasin projects, firming in-basin water rights, and firming transbasin water rights |

23

NEXT STEPS

CDM

24

Overall Recommendation

With the 2010 SWSI update, CWCB has updated its analysis of the state's water supply needs. CWCB, the IBCC, and basin roundtables should now enter an implementation phase to determine and pursue projects and methods to help meet the state's consumptive and nonconsumptive water supply needs. This will be accomplished through the implementation of the following recommendations by the CWCB.

25

Major Statewide Summit Conclusions

Table discussions:

- After 5 years, need to enter implementation phase
- Need to work regionally with the basin roundtables
- More specificity in plans
- Increase trust & engagement
- Prioritize use of funding

Governor recommended

- Protecting Water Supply Reserve Account Grants
- Short, medium, & long-term goals
- Prepare so that when funds become, we're shovel-ready
- Develop portfolios and a plan on how we're going to meet them

26
