



The Dollars and Sense of Watershed Ecosystem Services

RMLUI Conference
March 13-14, 2014





The South Platte River Urban Waters Partnership

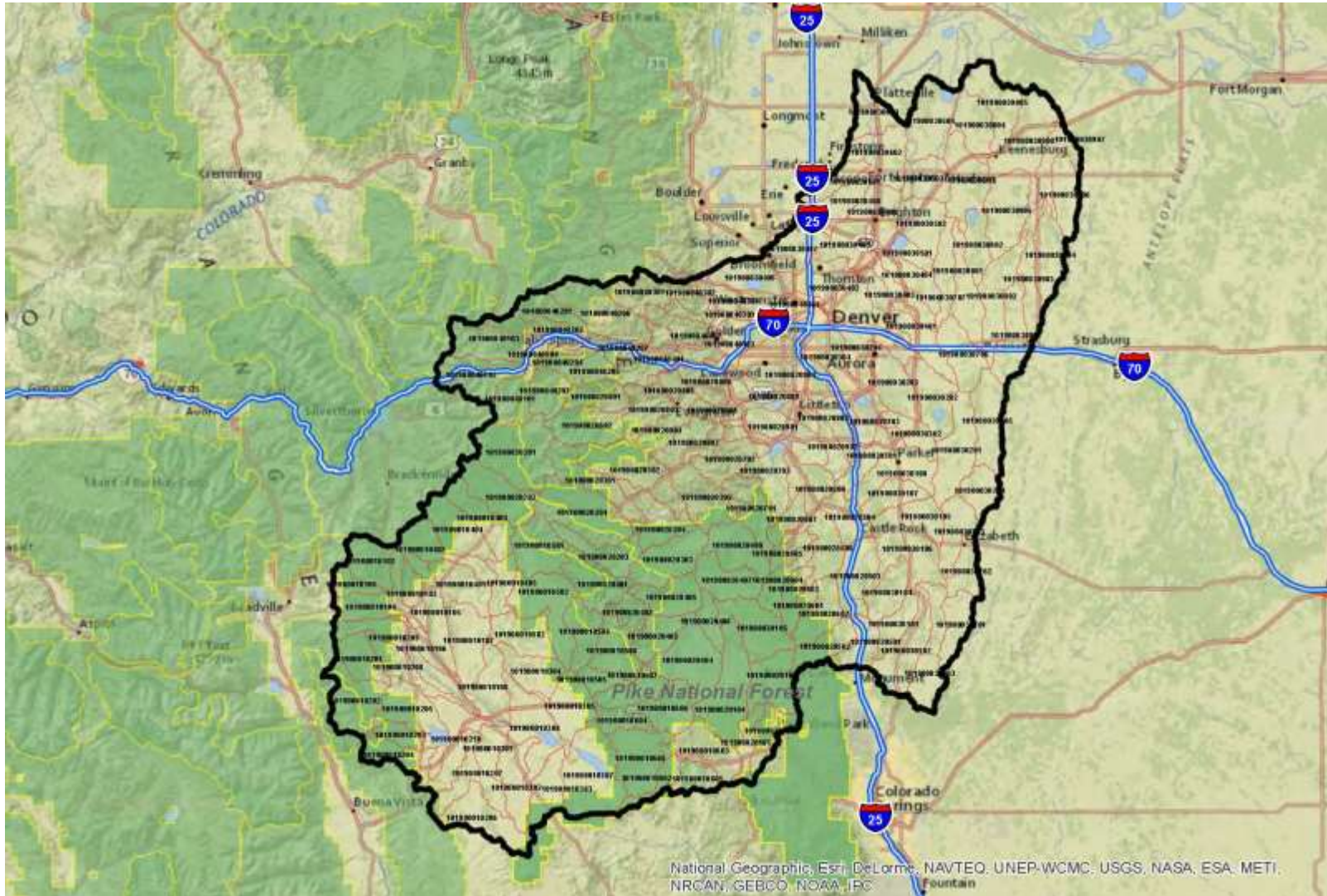
RMLUI Conference
March 13-14, 2014

Devon Buckels
Urban Waters Partnership Coordinator
Colorado State Forest Service
Devon.Buckels@colostate.edu
303-465-3515
www.urbanwaters.gov

Urban Waters Partners:

- The Greenway Foundation
- Groundwork Denver
- Coalition for the Upper South Platte
- Trust for Public Land
- National Forest Foundation
- Colorado Watershed Assembly
- Chatfield Area Network for Outreach & Educ.
- Earth Force
- South Platte CURE
- Sand Creek Regional Greenway Partnership
- Westerly Creek Connection
- Clear Creek Watershed Foundation
- Institute for Environmental Solutions
- Cherry Creek Stewardship Partners
- City and County of Denver
- City of Aurora
- Commerce City
- City of Englewood
- Adams County
- Jefferson County
- Douglas County
- Tri-County Health Dept.
- Jefferson Conservation District
- Barr-Milton Watershed Association
- Urban Drainage & Flood Control District
- Denver Water
- Aurora Water
- CDPHE
- Colorado State Forest Service
- USEPA
- USFS
- NPS RTCA
- ATSDR
- USGS
- USACE
- HUD
- NRCS
- USFWS
- USDOJ

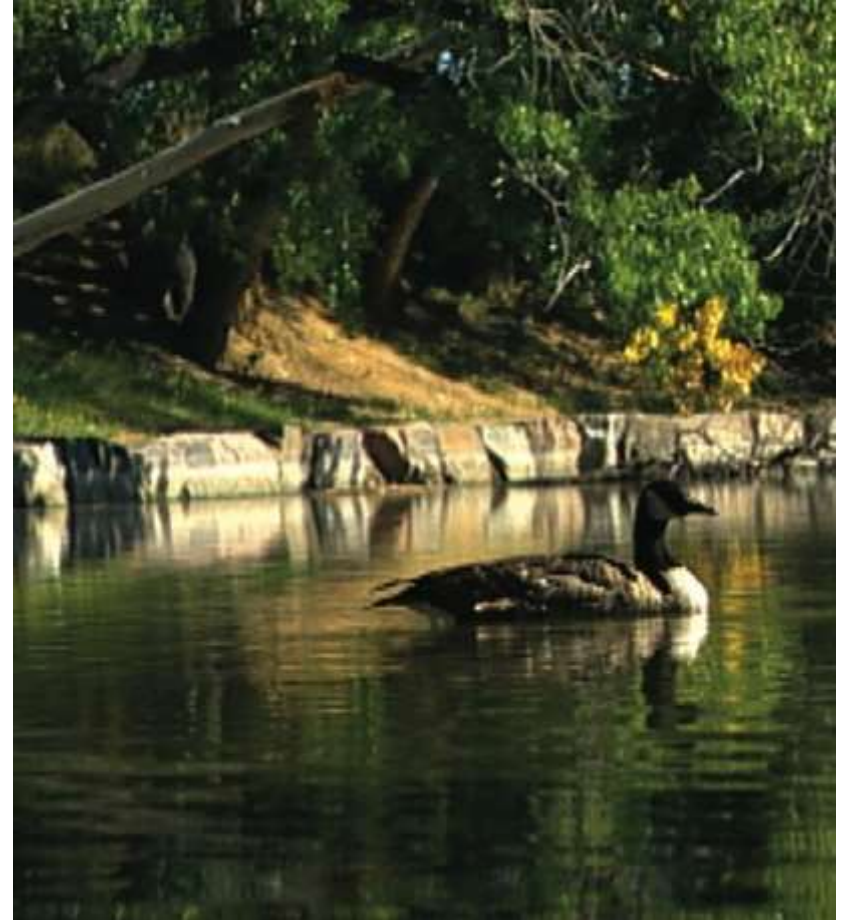
Focus Area



Water Quality

Water Protection

Water Awareness



Communication +
Coordination

Leverage Resources

Platform for
Partnering





Devon Buckels, AICP - Moderator
Urban Waters Partnership
Colorado State Forest Service
devon.buckels@colostate.edu

Katherine Hamilton
Independent Consultant
Governor's Taskforce on Climate and Energy
kateehamilton@gmail.com

Travis Warziniack
Economist
USFS Rocky Mountain Research Station
twwarziniack@fs.fed.us

Don Kennedy
Environmental Scientist
Denver Water, Planning Division
don.kennedy@denverwater.org

Thank You!

www.urbanwaters.gov