

Avoiding Random Acts of Conservation

Setting Priorities for People and Landscapes

Rocky Mountain Land Use Institute Conference
Denver, CO
March 8, 2013

Western Lands
and Communities

————— *A Joint Venture of the* —————
Lincoln Institute of Land Policy and Sonoran Institute

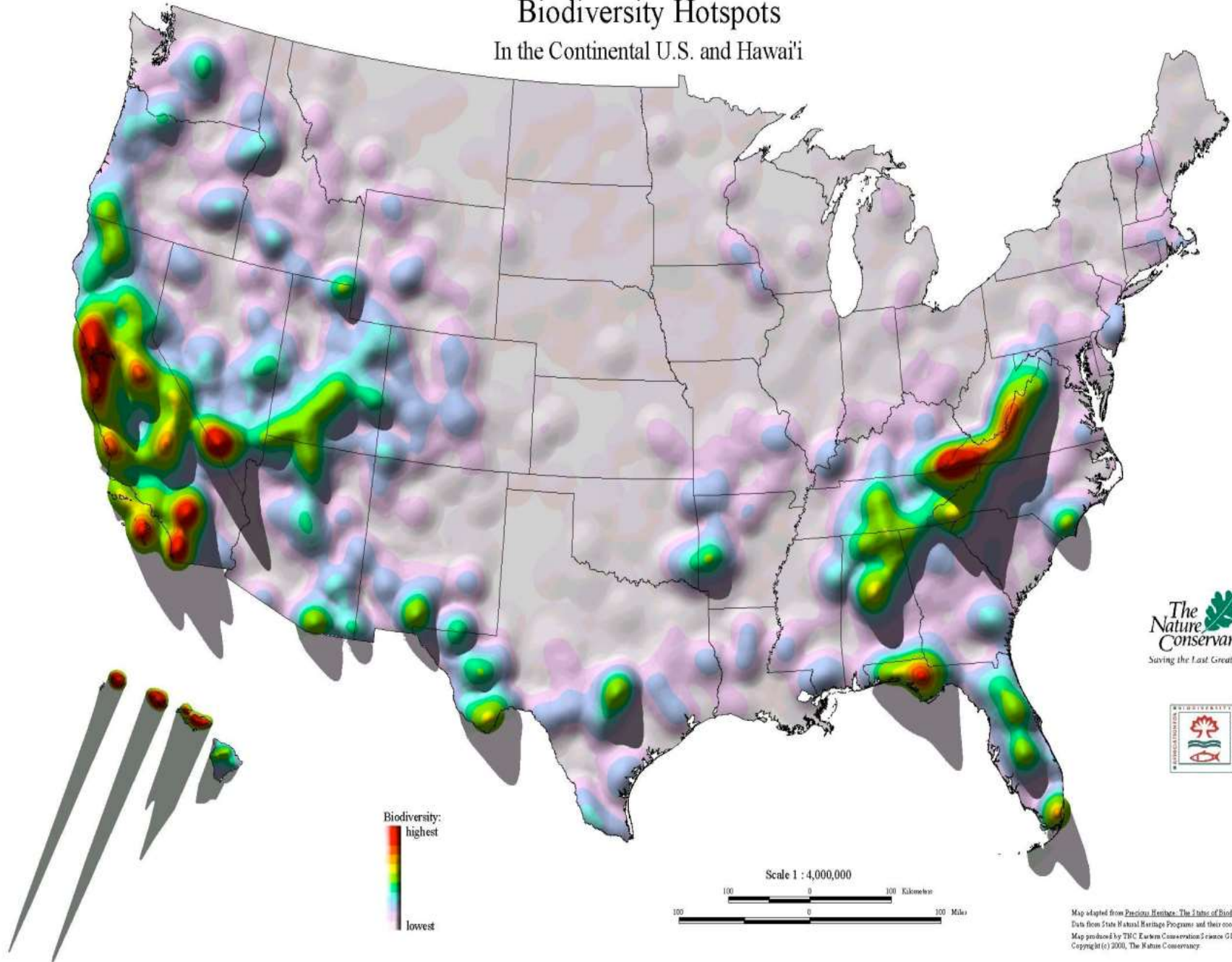






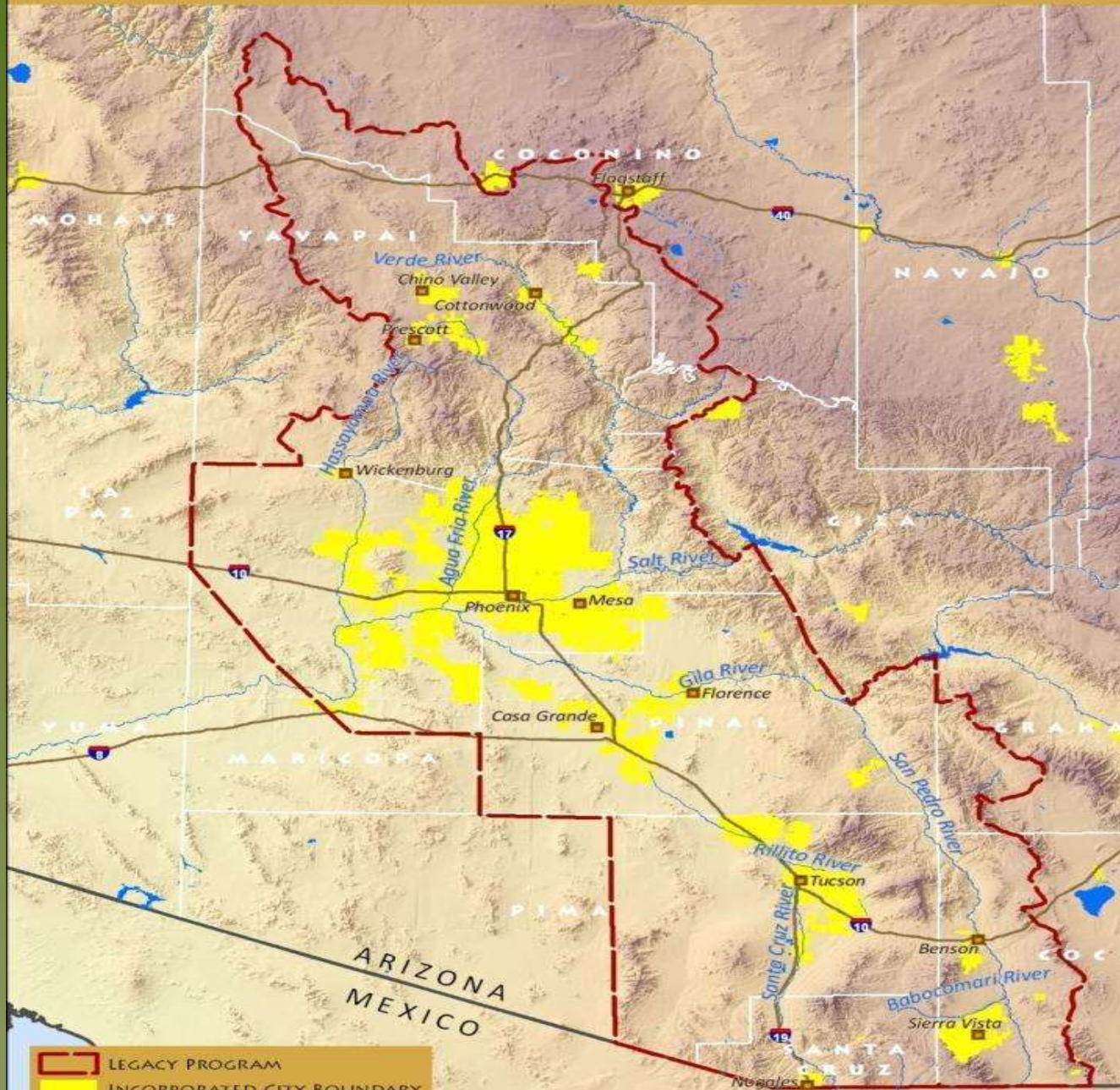
Biodiversity Hotspots

In the Continental U.S. and Hawai'i

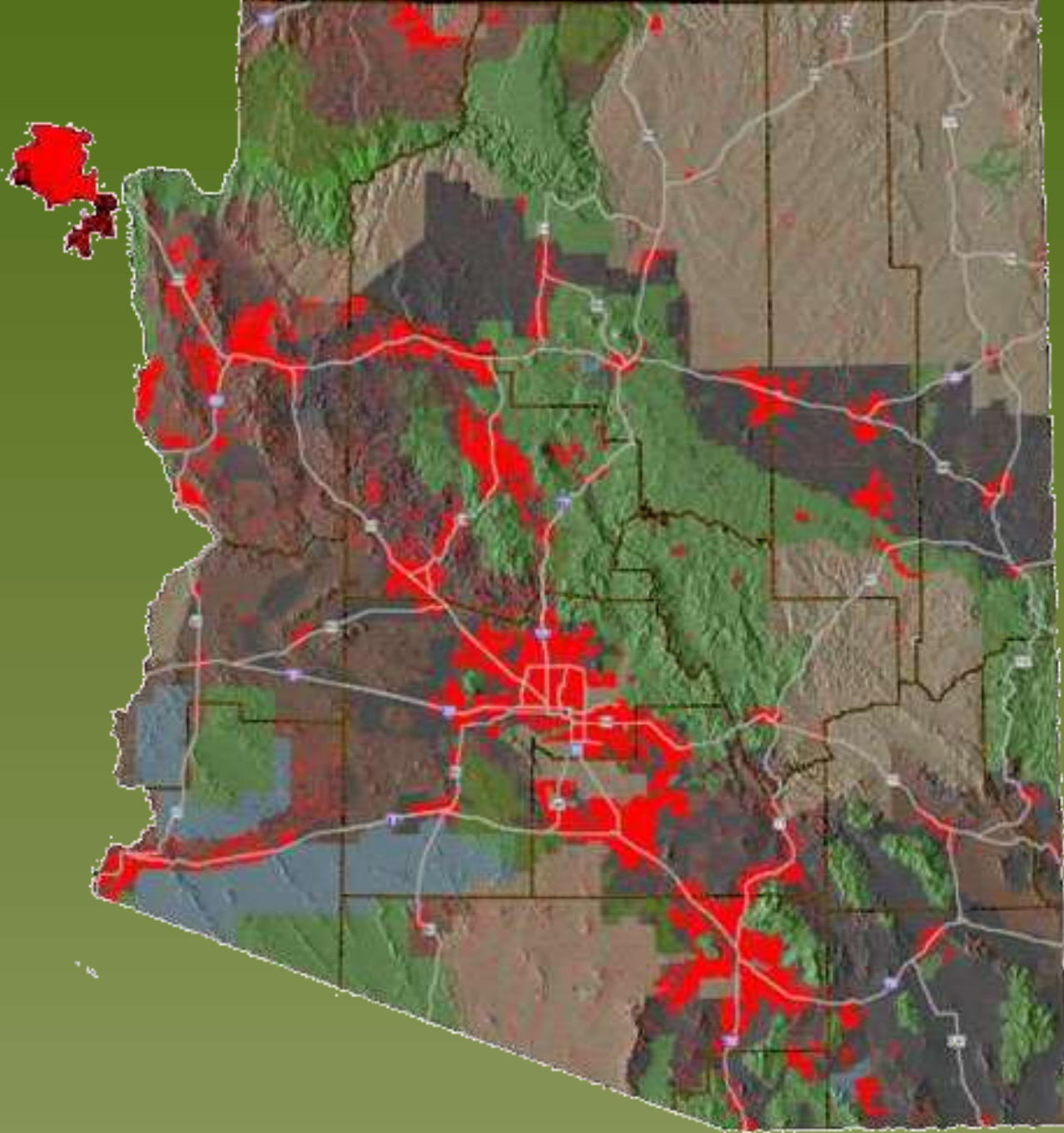




SUN CORRIDOR, ARIZONA: INCORPORATED CITIES 2008



 LEGACY PROGRAM
 INCORPORATED CITY BOUNDARY



Sun Corridor is projected to grow from 5.1 million residents in 2000 to 16 million in 2050



HELL'S CANYON

Monrovia Mountains

HARQUAHALA MOUNTAINS

Harquahala Addition

Hummingbird Springs Addition

West Belmont

HUMMINGBIRD MOUNTAINS SPRINGS

East Belmont Mountains

BIG HORN MOUNTAINS

Hummingbird Plain

Luke Air Force Base

EAGLETAIL MOUNTAINS

Eagletail Addition

Saddle Mountain

Cortez Peak

Columbus Peak

East Clanton Hills

Yellow Medicine Butte

Dixie Peak

Face Mountain

SIGNAL MOUNTAIN

WOOLSEY PEAK

Woolsey Peak Addition

Red Rock Canyon

Margie's Peak

NORTH MARICOPA MOUNTAINS

Butterfield Stage Memorial

SIERRA ESTRELLA

Rainbow Valley Wildlife Linkage



Successful Land Conservation in an Era of Constrained Resources

- Proactive
- Systematic
- Holistic
- Large landscape scale – wildlife connectivity and long term ecosystem resilience
- Better integrated with regional efforts to manage growth and development

Key Questions

- How does one evaluate what is most worthwhile or important to conserve, protect or restore?
- How do demographic changes, market forces and a changing climate push us to be more strategic?
- Tools to assist this process, and ensure that our conservation investments will have lasting value for communities

Panelists

- Ole Amundsen – The Conservation Fund
 - Strategic Conservation Planning Process
- Kelley Hart – Trust for Public Land
 - Greenprinting Case Studies & Lessons from the Field
- Stephanie Weigel – Sonoran Institute
 - Moving from Prioritization to Implementation:
Lessons from the Morongo Basin Open Space Group

My Background

EDUCATION

B.A. Government, Colby College

MCP, Environmental Planning, MIT

EXPERIENCE

Public Agencies – EPA, NPS, DOE and EOE

Nonprofits – The Conservation Fund, Sudbury Valley Trustees, Consensus Building Institute

Educator/Researcher – Cornell University and Conservation Leadership Network

Consultant – Land Conservation & Planning



FOR MORE INFORMATION CONTACT:

Ole Amundsen III, oamundsen@earthlink.org

Phone 607-277-0999

Highlight Key Take-Homes

- Set aside adequate time, funding and staffing to engage in the planning process
- Be clear about your conservation goals & objectives
- Engage the community early to create buy-in
- Have a plan for implementation of the plan
- Cultivate local champions of the conservation priorities that emerge

Highlight Key Take-Homes

- Plan for and adapt to change (people, economics, etc.)
- Recruit support from outside the “choir”
- Frame conservation benefits in terms of commonly held values
- Put tools into the hands of engaged community members
- Adapt your pitch to reflect local interests

Questions?