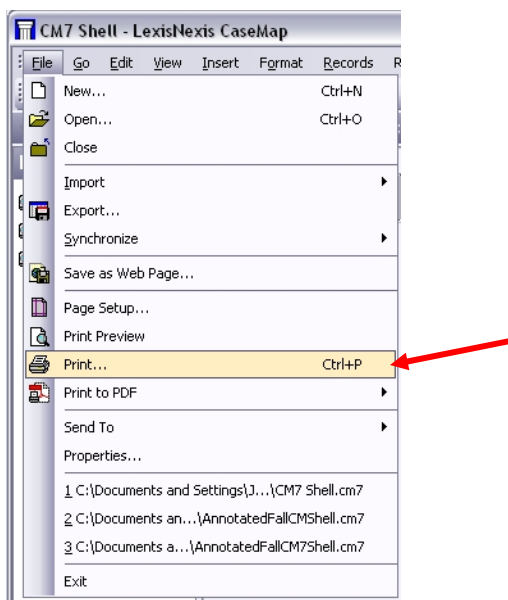


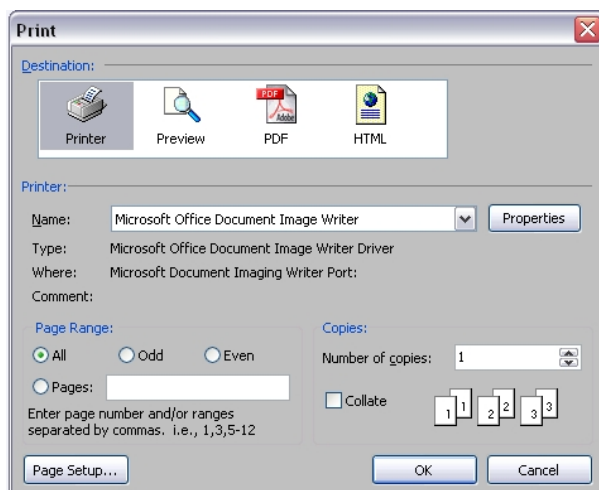
Printing from CaseMap

Printing from CaseMap is substantially similar to printing from most other pieces of software. First, open the CaseMap file you wish to print.

Once you have the file open choose “Print” from the File menu.



Once you have selected “Print” a new window will popup. By default, CaseMap will print in landscape format so that all of the text will fit across the page. This means that you do not have to adjust margins in your document because CaseMap will automatically adjust text to fit across the width of the page. Choosing “OK” will print your document.



Printing in CaseMap will only print the spreadsheet currently displayed.